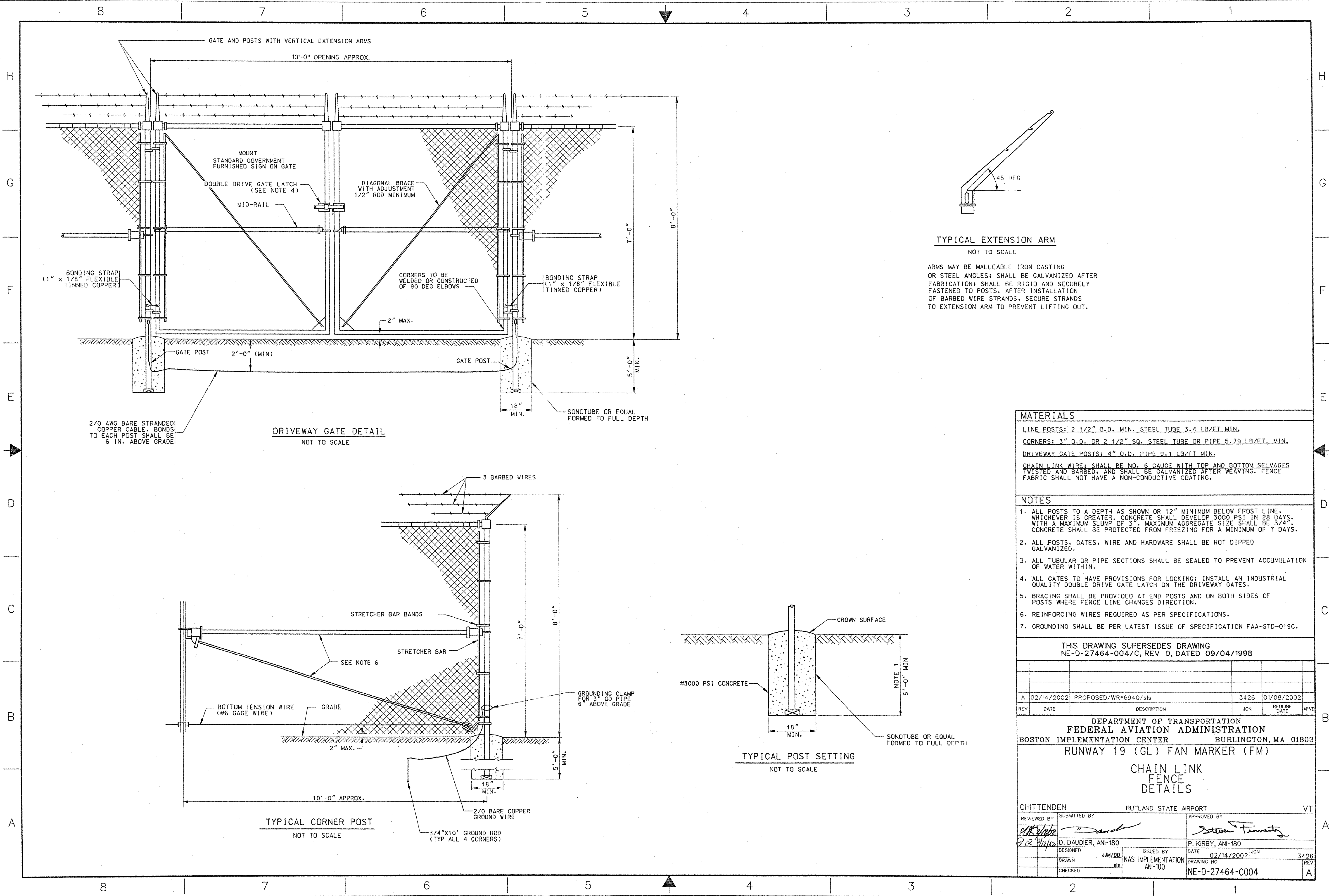


THIS DRAWING PRODUCED ON THE NEW ENGLAND REGION MICROSTATION SYSTEM



TYPICAL EXTENSION ARM
NOT TO SCALE

ARMS MAY BE MALLEABLE IRON CASTING OR STEEL ANGLES; SHALL BE GALVANIZED AFTER FABRICATION; SHALL BE RIGID AND SECURELY FASTENED TO POSTS. AFTER INSTALLATION OF BARBED WIRE STRANDS, SECURE STRANDS TO EXTENSION ARM TO PREVENT LIFTING OUT.

MATERIALS

LINE POSTS: 2 1/2" O.D. MIN. STEEL TUBE 3.4 LB/FT. MIN.
 CORNERS: 3" O.D. OR 2 1/2" SQ. STEEL TUBE OR PIPE 5.79 LB/FT. MIN.
 DRIVEWAY GATE POSTS: 4" O.D. PIPE 9.1 LB/FT. MIN.
 CHAIN LINK WIRE: SHALL BE NO. 6 GAUGE WITH TOP AND BOTTOM SELVAGES TWISTED AND BARBED, AND SHALL BE GALVANIZED AFTER WEAVING. FENCE FABRIC SHALL NOT HAVE A NON-CONDUCTIVE COATING.

- NOTES**
1. ALL POSTS TO A DEPTH AS SHOWN OR 12" MINIMUM BELOW FROST LINE, WHICHEVER IS GREATER. CONCRETE SHALL DEVELOP 3000 PSI IN 28 DAYS, WITH A MAXIMUM SLUMP OF 3". MAXIMUM AGGREGATE SIZE SHALL BE 3/4". CONCRETE SHALL BE PROTECTED FROM FREEZING FOR A MINIMUM OF 7 DAYS.
 2. ALL POSTS, GATES, WIRE AND HARDWARE SHALL BE HOT DIPPED GALVANIZED.
 3. ALL TUBULAR OR PIPE SECTIONS SHALL BE SEALED TO PREVENT ACCUMULATION OF WATER WITHIN.
 4. ALL GATES TO HAVE PROVISIONS FOR LOCKING; INSTALL AN INDUSTRIAL QUALITY DOUBLE DRIVE GATE LATCH ON THE DRIVEWAY GATES.
 5. BRACING SHALL BE PROVIDED AT END POSTS AND ON BOTH SIDES OF POSTS WHERE FENCE LINE CHANGES DIRECTION.
 6. REINFORCING WIRES REQUIRED AS PER SPECIFICATIONS.
 7. GROUNDING SHALL BE PER LATEST ISSUE OF SPECIFICATION FAA-STD-019C.

THIS DRAWING SUPERSEDES DRAWING
NE-D-27464-004/C, REV 0, DATED 09/04/1998

REV	DATE	DESCRIPTION	JCN	REDLINE DATE	APVD
A	02/14/2002	PROPOSED/WR#6940/sls	3426	01/08/2002	

DEPARTMENT OF TRANSPORTATION
 FEDERAL AVIATION ADMINISTRATION
 BOSTON IMPLEMENTATION CENTER BURLINGTON, MA 01803
 RUNWAY 19 (GL) FAN MARKER (FM)

CHAIN LINK FENCE DETAILS

CHITTENDEN RUTLAND STATE AIRPORT VT

REVIEWED BY	SUBMITTED BY	APPROVED BY
<i>[Signature]</i>	<i>[Signature]</i>	<i>[Signature]</i>
DESIGNED BY	ISSUED BY	DATE
D. DAUDIER, ANI-180	P. KIRBY, ANI-180	02/14/2002
DRAWN	JUN/00	3426
st	NAS IMPLEMENTATION	REV
CHECKED	ANI-100	A
	NE-D-27464-C004	

D:\Home\work\files\avi\WORKING\LINK\027464-004.dgn
02/17/2002 05:46:27 PM smlm