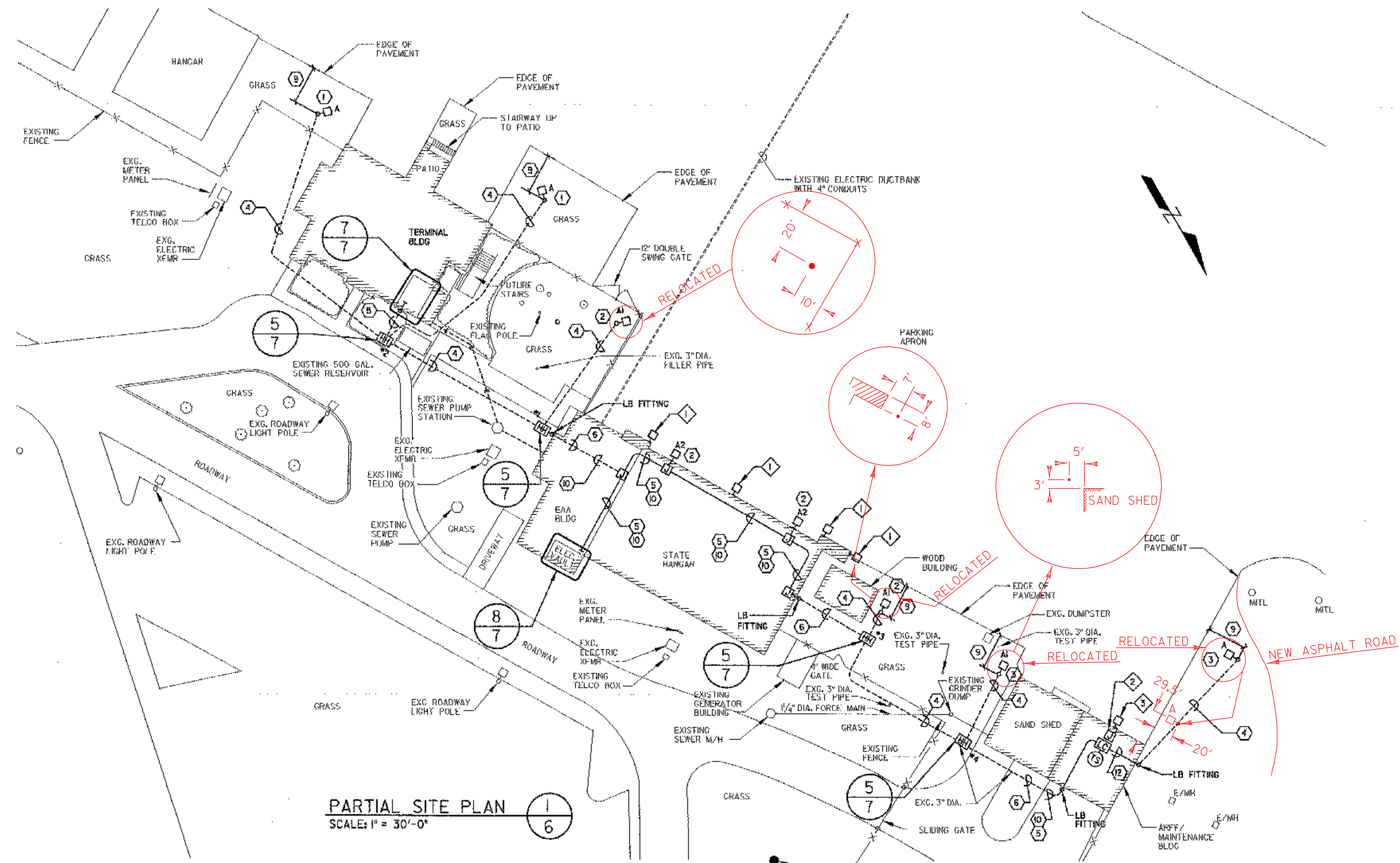


SYMBOLS	
SYMBOL	DESCRIPTION
	EXISTING BUILDING OUTLINE
	PROPOSED LIGHTING CONTACTOR (SQUARE 'O' #8903LXG40V02) MOUNTED 60" AFF
	PROPOSED TIME CLOCK (TORK #T920L) MOUNTED 60" AFF
	PROPOSED PHOTOELECTRIC CELL (TORK #2105) MOUNTED 15'-0" AFG
	PROPOSED POLE MOUNTED FLOODLIGHT, FIXTURE TYPE DENOTED. SEE DETAIL 4/7 FOR ADDITIONAL INFORMATION.
	PROPOSED WALL MOUNTED FLOODLIGHT, FIXTURE TYPE DENOTED. SEE DETAIL 3/7 FOR ADDITIONAL INFORMATION.
	PROPOSED JUNCTION BOX.
	NEW STACKABLE HANDHOLE (QUAZITE #PC08189G08), SEE DETAIL 5/7 FOR ADDITIONAL INFORMATION.
	NEW UNDERGROUND ELECTRICAL CONDUIT, SEE DETAIL 1/7 FOR ADDITIONAL INFORMATION.
	EXPOSED ELECTRICAL CONDUIT.
	CIRCUIT BREAKER
	NORMALLY OPEN CONTACT
	RELAY COIL
	DEMOLITION NOTE
	CONSTRUCTION NOTE
	TORK #A512HH 12-HOUR TIME SWITCH IN NEMA ENCLOSURE FOR APRON LIGHTING OVERIDE. MOUNT ADJACENT TO LIGHTING CONTACTOR AND LABEL "APRON LIGHTING OVERIDE SWITCH".

ABBREVIATIONS	
ABBREVIATION	EXTENSION
A	AMPERE
AFF	ABOVE FINISHED FLOOR
AFG	ABOVE FINISHED GRADE
AIC	AMPERE INTERRUPTING CAPACITY
AWG	AMERICAN WIRE GAGE
C	CONDUIT
C/B	CIRCUIT BREAKER
CKT	CIRCUIT
DIA.	DIAMETER
E	ELECTRICAL
EAA	EXPERIMENTAL AIRCRAFT ASSOCIATION
EMT	ELECTRICAL METALLIC TUBING
EXG	EXISTING
G	GROUND
GA	GAGE
GFI	GROUND FAULT INTERRUPTER
GRC	GALVANIZED RIGID CONDUIT
HPS	HIGH PRESSURE SODIUM
HH	HAND HOLD
K	KELVIN OR THOUSAND
KV	KILO-VOLT
KVA	KILO-VOLT-AMPERE
KW	KILO-WATT
LC	LIGHTING CONTACTOR
LP	LIGHT PANEL
MDP	MAIN DISTRIBUTION PANEL
MH	MANHOLE
O.C.	ON CENTER
O.D.	OUTSIDE DIAMETER
PCC	PORTLAND CEMENT CONCRETE
PP	POWER PANEL
PVC	POLYVINYL CHLORIDE
T, TX	TRANSFORMER
TC	TIME CLOCK
TYP	TYPICAL
UNO	UNLESS OTHERWISE NOTED
V	VOLTS
VA	VOLT-AMPERE
W	WATT OR WIRE
WP	WEATHERPROOF
XFMR	TRANSFORMER



LIGHTING FIXTURE SCHEDULE					
TYPE	DESCRIPTION	MANUFACTURER & CATALOG NO.	VOLTAGE	LAMPS	REMARKS
A	POLE MOUNTED FLOODLIGHT, SINGLE HEAD, WITH DIE-CAST ALUMINUM HOUSING, TEMPERED GLASS LENS, TYPE 4 DISTRIBUTION, HID LAMP & INTEGRAL HPF BALLAST, PROVIDE 30" ROUND TAPERED STEEL POLE WITH 2 3/8" TENON.	LUMARK *HPWR65S250-120 COOPER LIGHTING (POLE) *RTSBA30SF2XX	120	Ø 250W HPS	1,2
A1	POLE MOUNTED FLOODLIGHT, SINGLE HEAD, WITH DIE-CAST ALUMINUM HOUSING, TEMPERED GLASS LENS, TYPE 4 DISTRIBUTION, HID LAMP & INTEGRAL HPF BALLAST, PROVIDE 30" ROUND TAPERED STEEL POLE WITH 2 3/8" TENON.	LUMARK *HPWR65S400-120 COOPER LIGHTING (POLE) *RTSBA30SF2XX	120	Ø 400W HPS	1,2
A2	WALL MOUNTED FLOODLIGHT, SINGLE HEAD, WITH DIE-CAST ALUMINUM HOUSING, TEMPERED GLASS LENS, TYPE 4 DISTRIBUTION, HID LAMP & INTEGRAL HPF BALLAST, PROVIDE RIGHT ANGLE BRACKET FOR MOUNTING ON THE EXTERIOR OF HANGER.	LUMARK *HPWR65S400-120/RAB	120	Ø 400W HPS	1,2,3

**NOTES:**  
 1. OR APPROVED EQUAL, PROVIDE ALL REQUIRE MOUNTING ACCESSORIES.  
 2. FIXTURE TO BE SET WITH 45° DOWN TILT INITIALLY, PROVIDE OPTIMAL ILLUMINATION BY AIMING FIXTURES AFTER DARK.  
 3. INSTALL AT 25'-0" AFG.

- GENERAL NOTES:**
- CONTRACTOR SHALL FIELD VERIFY EXISTING CONDITIONS PRIOR THE START OF WORK AND REPORT DISCREPANCIES AND CONFLICTS TO THE ENGINEER, NO ADDITIONAL COMPENSATION WILL BE PAID TO THE CONTRACTOR IF IT IS FOUND THAT THE CONTRACTOR FAILED TO IDENTIFY THE EXISTING CONDITION.
  - CONTRACTOR ACCESS TO THE AIRSIDE WILL BE RESTRICTED TO THOSE TIMES WHEN THE AIRLINE (COLGAN AIR) IS NOT BOARDING OR DISEMBARKING PASSENGERS.
  - CONTRACTOR MUST COORDINATE ALL WORK WITH THE RESIDENT ENGINEER AND AIRPORT MANAGER, ANY INTERRUPTION OF ELECTRICAL SERVICE MUST BE COORDINATED WITH THE AIRLINE AND AIRPORT MANAGER.
  - ALL WORK IS INCLUDED IN ITEM 679J5 STREET LIGHTING (MOD.)
  - ALL EXPOSED CONDUIT IN DAMP OR WET LOCATIONS SHALL BE GRC. CONDUIT LOCATED INSIDE IN DRY LOCATIONS MAY BE EMT. EXTERIOR EXPOSED CONDUIT SHALL BE GRC TO BELOW GRADE INCLUDING THE SWEEP ELBOW.
- DEMOLITION NOTES:**
- EXISTING LIGHT FIXTURE TO BE REMOVED, REMOVE EXISTING WIRES AND CONDUIT BACK TO SOURCE, MAKE ALL BUILDING OPENINGS WATER TIGHT.
  - EXISTING J-BOX TO REMAIN.
  - EXISTING LIGHT FIXTURE TO REMAIN.

- CONSTRUCTION NOTES:**
- CONNECT TO EXISTING PANELBOARD 'LP1' LOCATED IN TERMINAL BUILDING ELECTRIC ROOM VIA PROPOSED LIGHTING CONTACTOR TO BE MOUNTED ADJACENT TO PANELBOARD 'LP1'.
  - CONNECT TO EXISTING PANELBOARD 'M' LOCATED IN HANGAR ELECTRIC VAULT VIA LIGHTING CONTACTOR TO BE MOUNTED ADJACENT TO PANELBOARD 'M'.
  - CONNECT TO EXISTING EXTERIOR LIGHTING CIRCUIT VIA LIGHTING CONTACTOR MOUNTED ADJACENT TO J-BOX.
  - PROVIDE 2"Ø & 1"Ø IN 1/4" PVC.
  - PROVIDE 4"Ø & 1"Ø IN 1/4" GRC.
  - PROVIDE 4"Ø & 1"Ø IN 1/4" PVC.
  - PROVIDE A 20A-1P CIRCUIT BREAKER TO SUPPORT THE INDICATED LIGHTING LOADS, MATCH EXISTING AIC RATING AND MANUFACTURER.
  - PROVIDE A 20A-1P CIRCUIT BREAKER TO SUPPORT TIME CLOCK, MATCH EXISTING AIC RATING AND MANUFACTURER.
  - 20'-0" MINIMUM SET BACK.
  - ROUTE CONDUIT ALONG WALLS OR UNDERSIDE OF STRUCTURE AS REQUIRED, COORDINATE ROUTE AND HANGAR LOCATIONS WITH EXISTING OBSTRUCTIONS.
  - CONTRACTOR TO RESTORE ALL LANDSCAPING (GRASS, WALKWAYS, ETC.) DISTURBED BY TRENCHING OR EXCAVATION (MATCH ORIGINAL CONDITIONS), RESTORATION TO INCLUDE TOPSOIL, SEED, MULCH, BITUMINOUS CONCRETE, CURBING, LANDSCAPE PAVERS OR CONCRETE, AS REQUIRED.
  - PROVIDE 2"Ø & 1"Ø IN 1/4" PVC.
  - PROVIDE 2"Ø & 1"Ø IN 3/4" GRC.

**URS**  
1 NORTHWAY LN.,  
LATHAM, NEW YORK

**RUTLAND STATE AIRPORT**  
CLARENDON, VERMONT

**APRON LIGHTING LAYOUT**

Designed by: R.A.  
Drawn by: M.M.  
Checked by: L.M.  
Approved by: G.B.D.

Scale: 1" = 30'  
Date: MAR., 2005  
Sheet 5 OF 8  
Sheet No. **6**

A.I.P. 3-50-0015-16