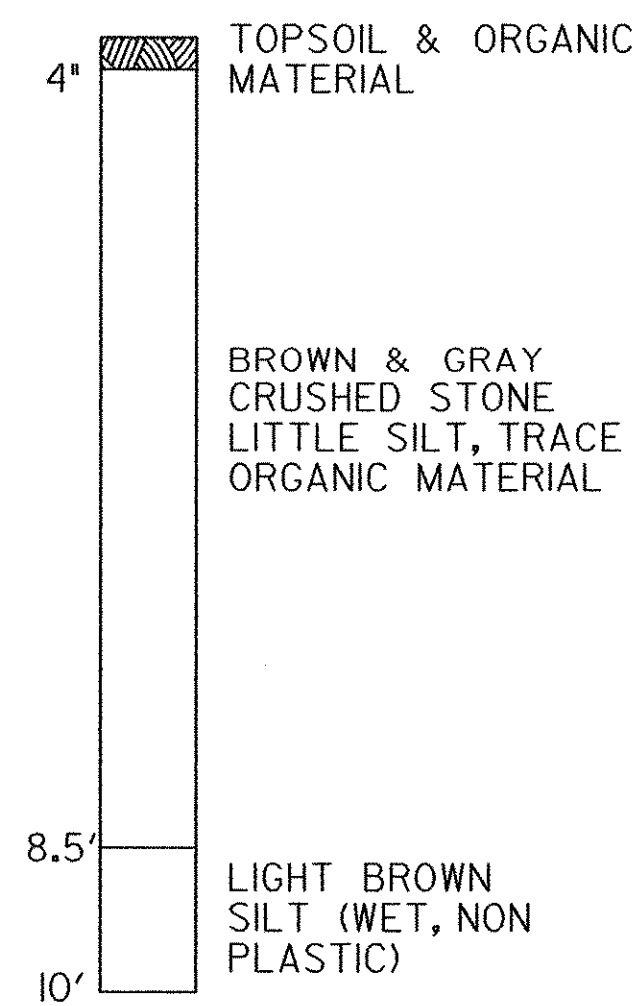
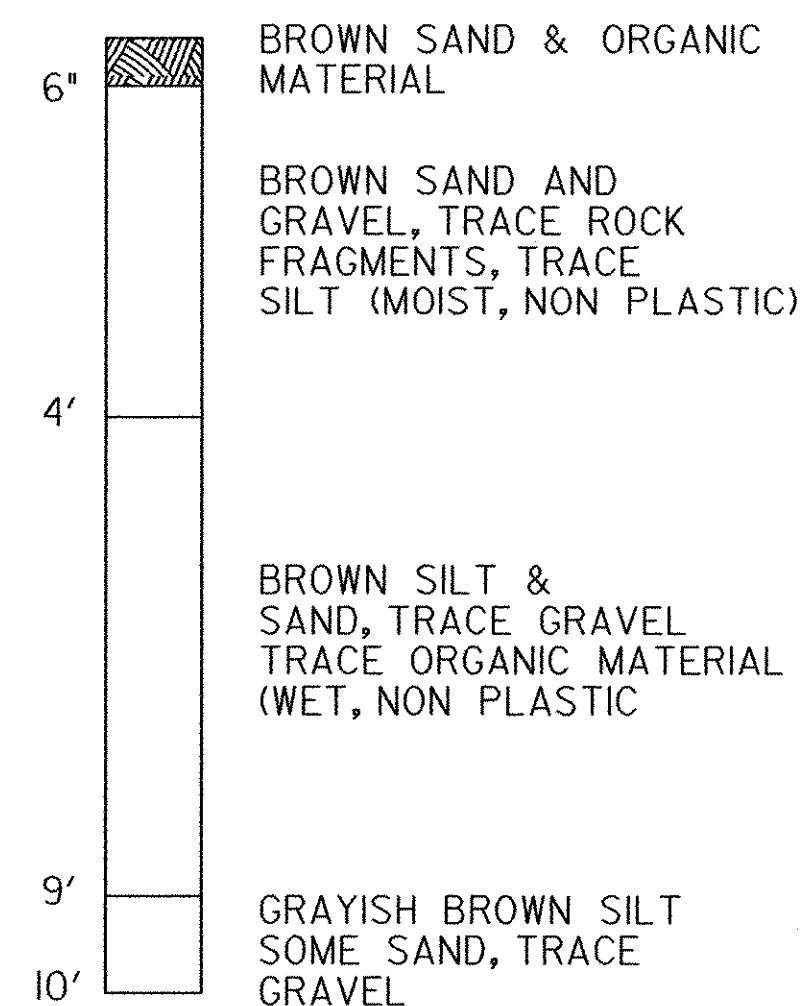


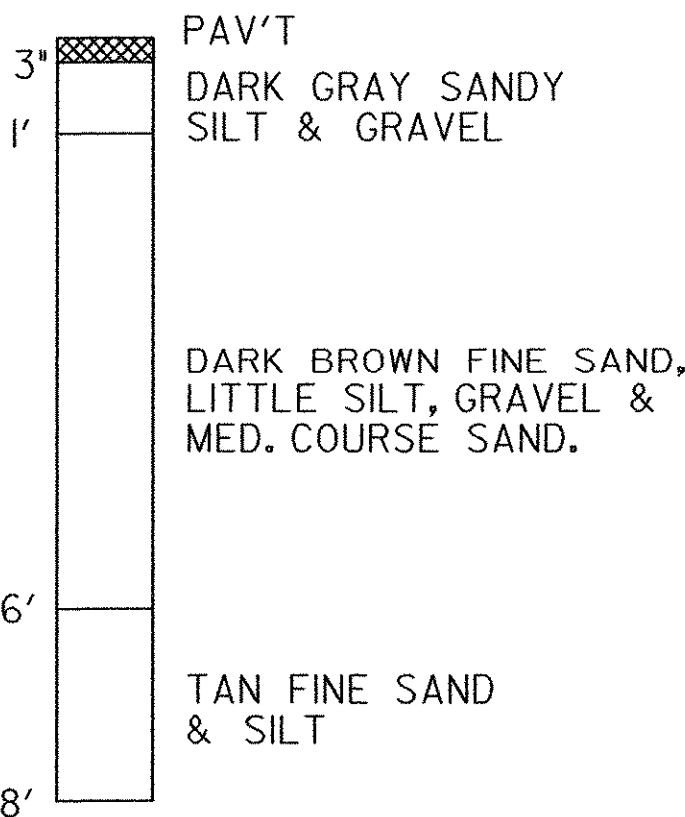
B-3
T/W G 311+60+/-
CL



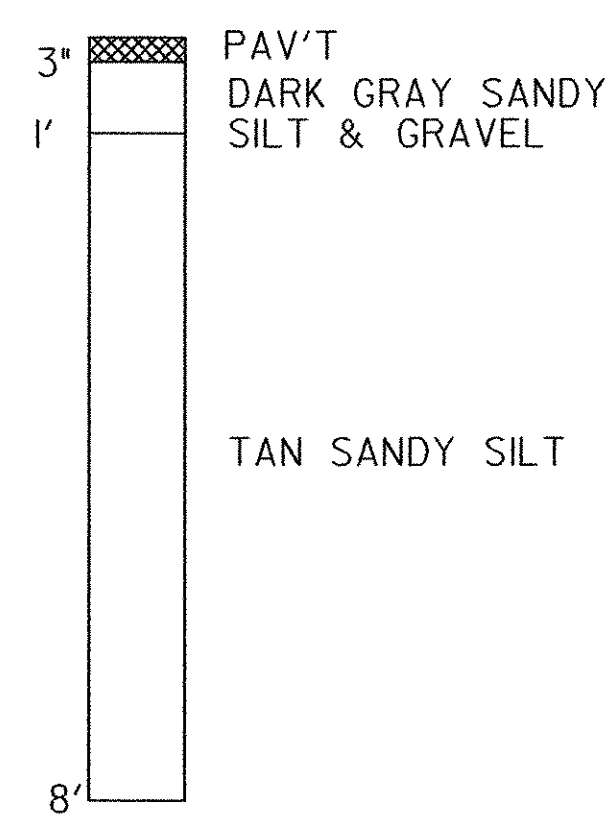
B-4
T/W G 312+60+/-
CL



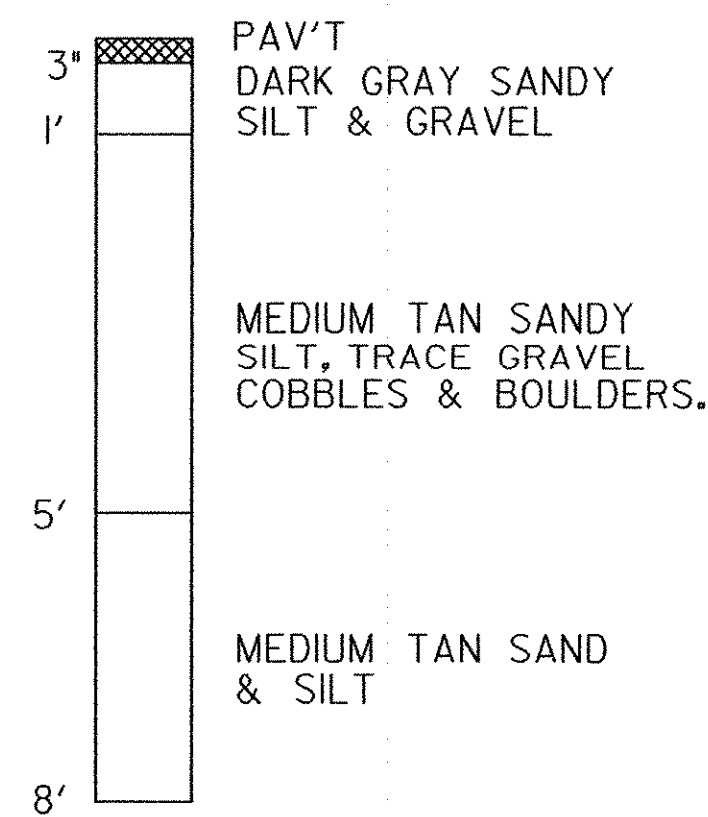
B-6
35+00
CL



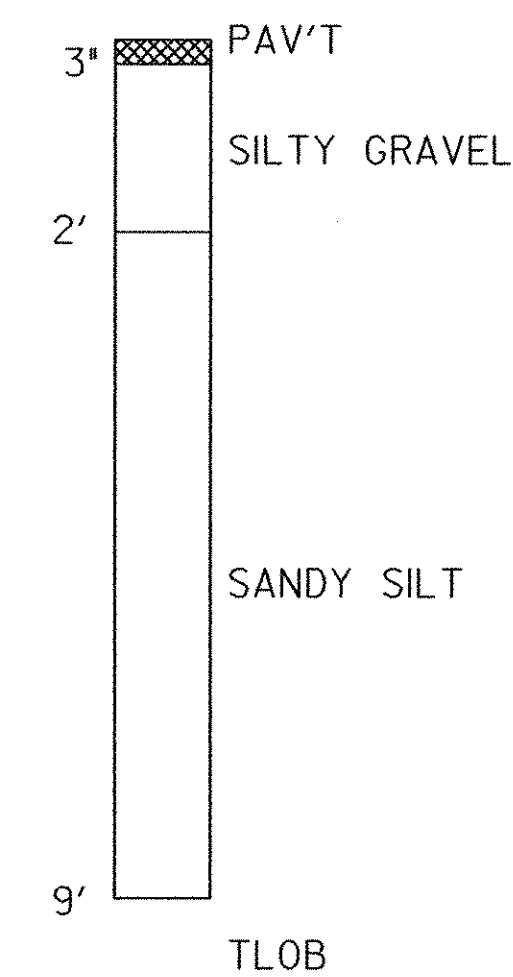
B-9
25' LT.
25+00



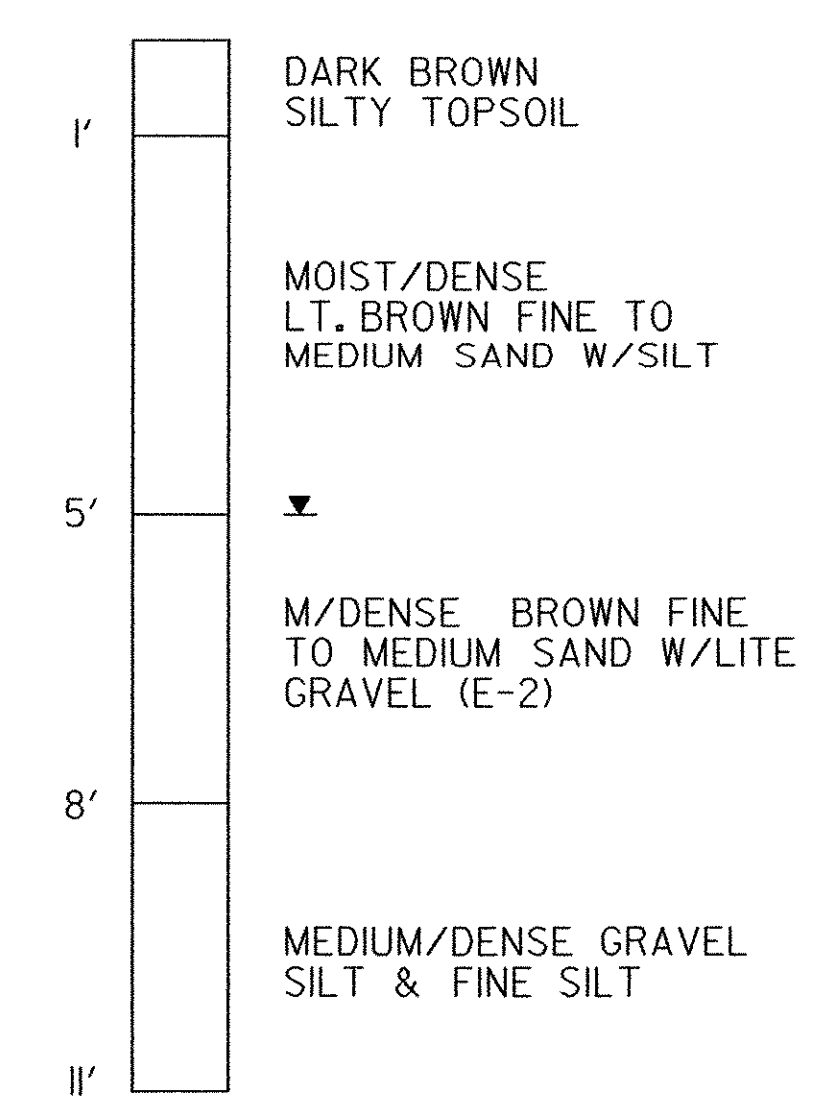
B-12
20' LT.
17+00



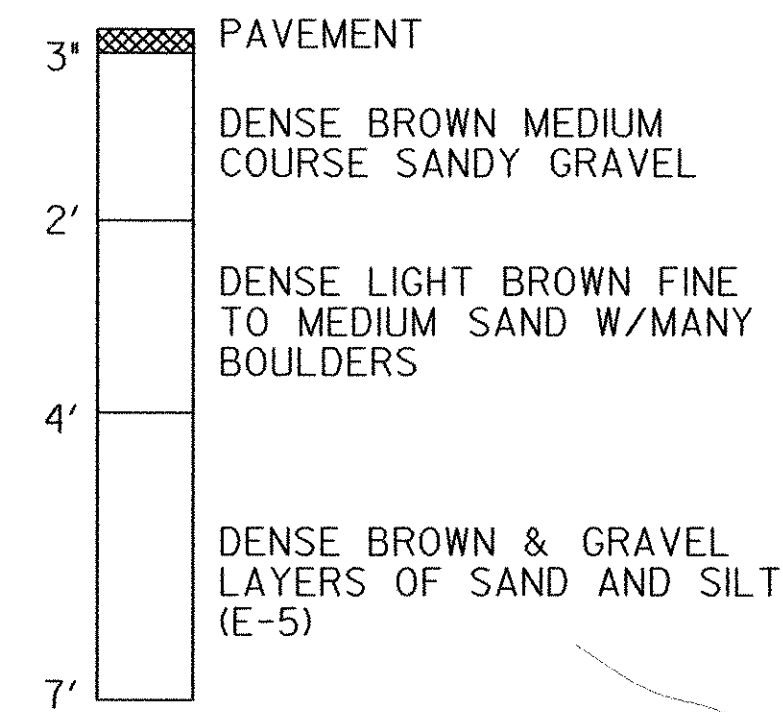
B-40
30' LT.
114+00



B-60A
100' +/- LT.
417+00



B-70
95' LT.
418+80 +/-

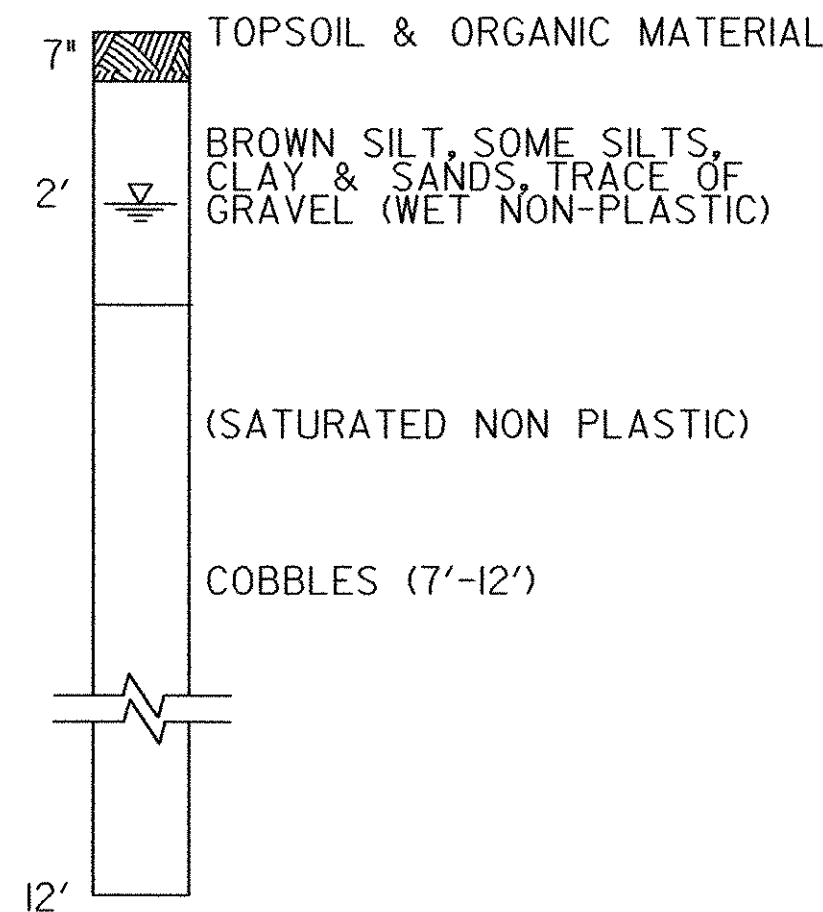


LEGEND:

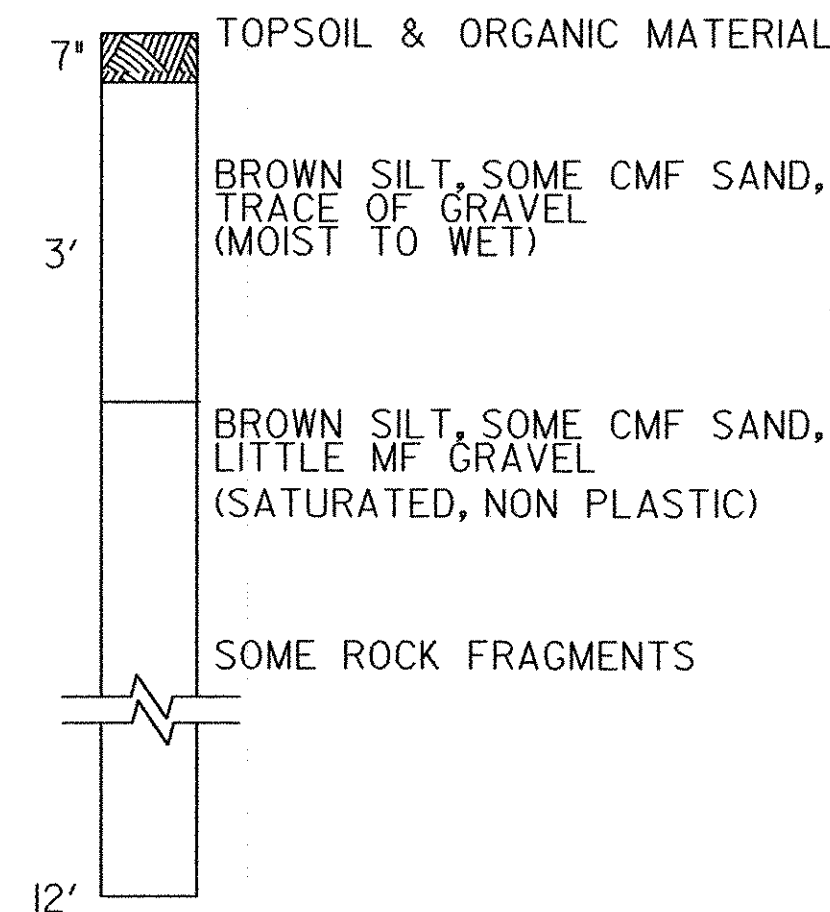
D	N	V	DESCRIPTION
▬	▬	▬	PAVEMENT AND SOIL DESCRIPTION
▬	▬	▬	

N - BLOWS PER 6-INCH INCREMENTS OF PENETRATION OF SAMPLING SPOON OR PENETRATION IN INCHES FOR THE INDICATED BLOWS OF A 140 LB. HAMMER FALLING 30".
V - SYMBOLS INDICATE EXTENT OF SOIL LAYERS
D - DEPTHS

B-10
220' RT.
'G' 315+55

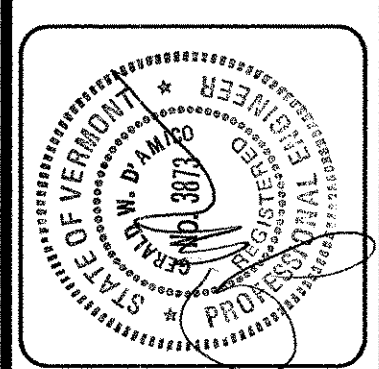
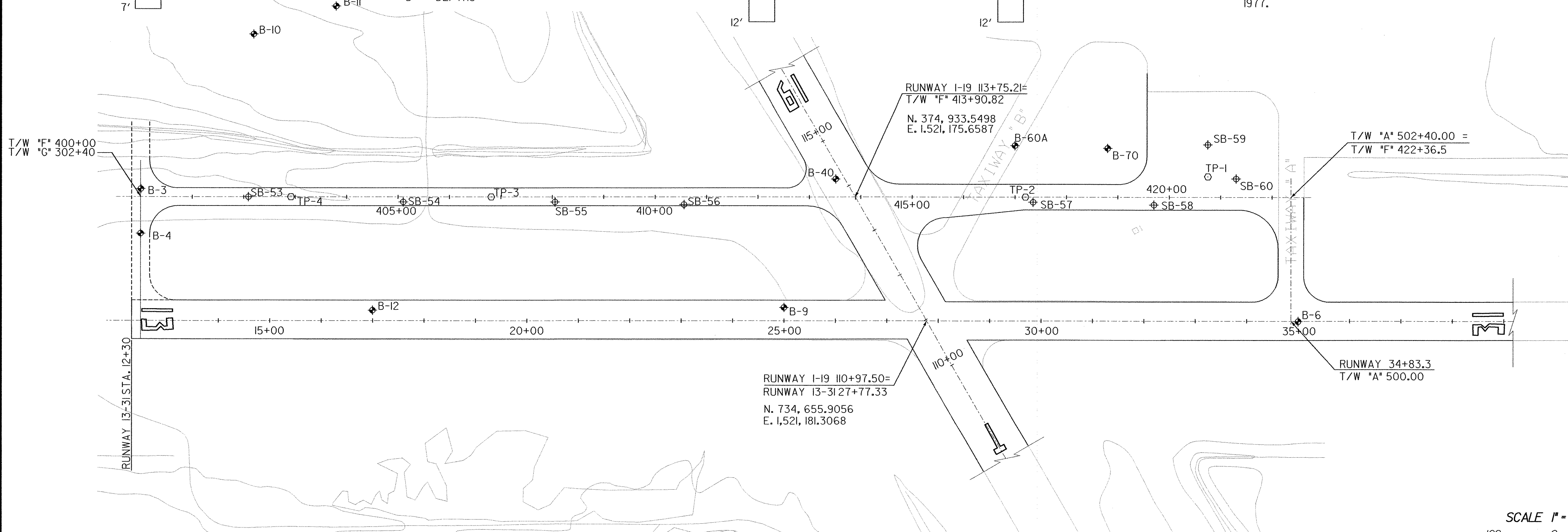


B-11
380' RT.
'G' 316+10



NOTES:

- BORINGS #B-3, #B-4, #B10 & #B11 WERE REPORTED ON PLANS FOR PROPOSED IMPROVEMENTS, BY McFARLAND-JOHNSON, DATED JANUARY, 2001.
- BORINGS #B-6, B-9, B-12 WERE REPORTED ON PLANS FOR, AIP 3-50-0015-04, BY DUFRESNE-HENRY, Inc., DATED JULY, 1985.
- BORING #B-40 WAS REPORTED ON PLANS FOR ADAP 8-50-0015-03 BY DUFRESNE-HENRY, Inc., DATED AUGUST, 1973.
- BORINGS #B-60 & B-70 WERE REPORTED ON PLANS FOR ADAP 6-50-0015-06 BY DUFRESNE-HENRY, Inc., DATED SEPTEMBER, 1977.
- BORINGS #B-60 & B-70 WERE REPORTED ON PLANS FOR ADAP 6-50-0015-06 BY DUFRESNE-HENRY, Inc., DATED SEPTEMBER, 1977.



REV.	DATE	DESCRIPTION

Job No. F20002046.00
File No. F20204600E28

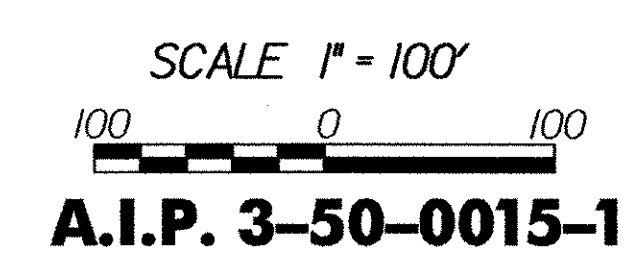
RUTLAND STATE AIRPORT
CLARENDON, VERMONT

TAXIWAY IMPROVEMENTS
BORING LOGS

URS
1 NORTHWAY LN.
LATHAM, NEW YORK

Designed by: G.M.D.
Drawn by: M.C.M.
Checked by: G.M.D.
Approved by: F.J.A.

Scale: 1"=100'
Date: FEB., 2003
Sheet 28 OF 40
Sheet No. **28**



A.I.P. 3-50-0015-17

P:\CIVIL\Sheet\1\022002\F20204600E28.dgn