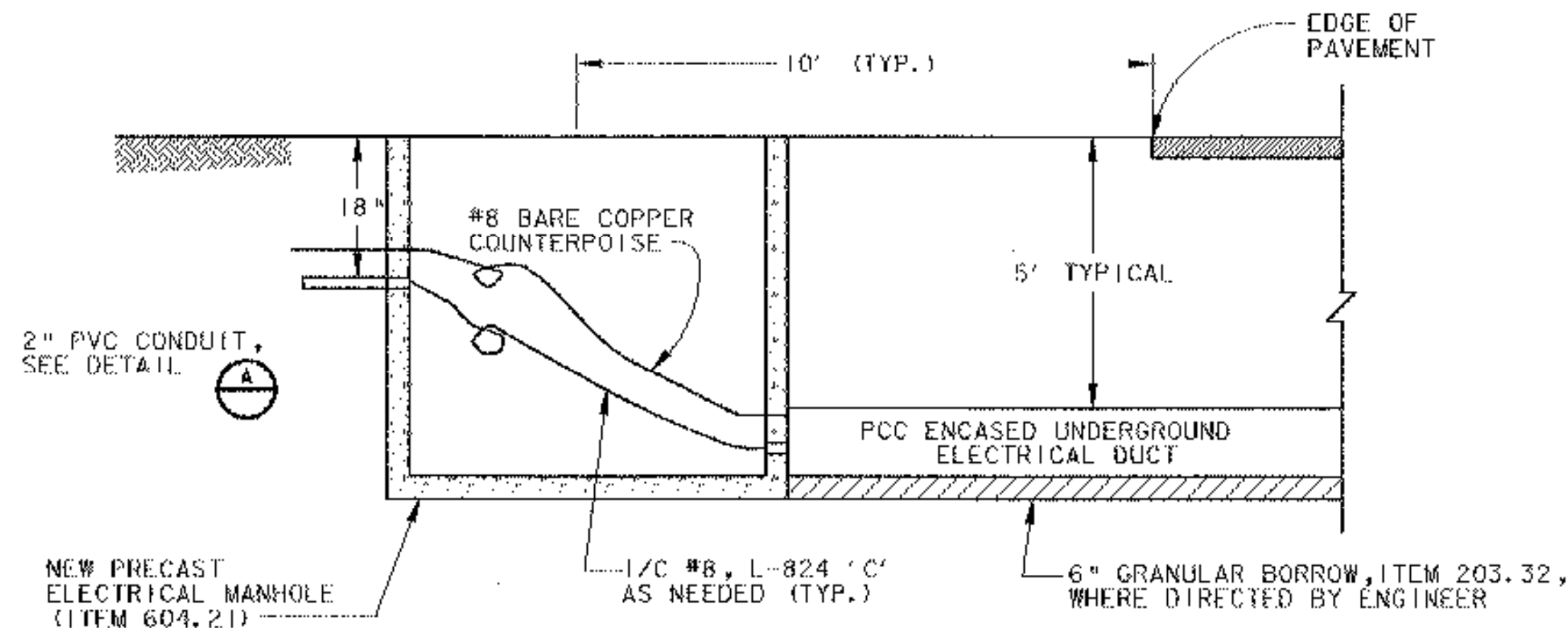


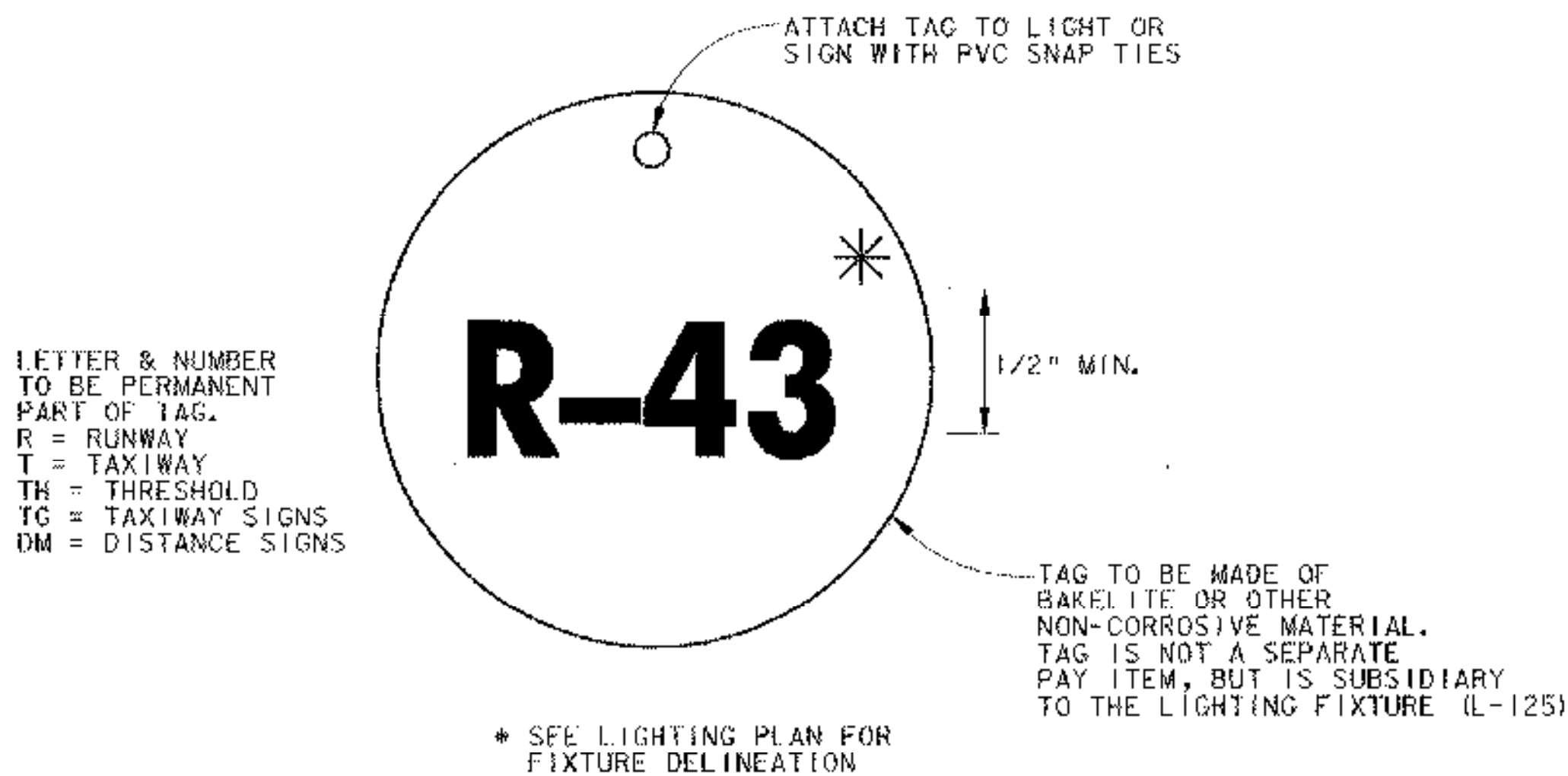
NOTE:
ADDITIONAL CONDUITS MAY BE PLACED IN SAME TRENCH @ 3" SPACING. MAX. NUMBER OF CABLES / CONDUIT PER N.E.C.

* FINE BORROW MATERIAL REASONABLY FREE FROM LOAM, CLAY OR ORGANIC MATERIAL, MAXIMUM SIZE = 1/2"

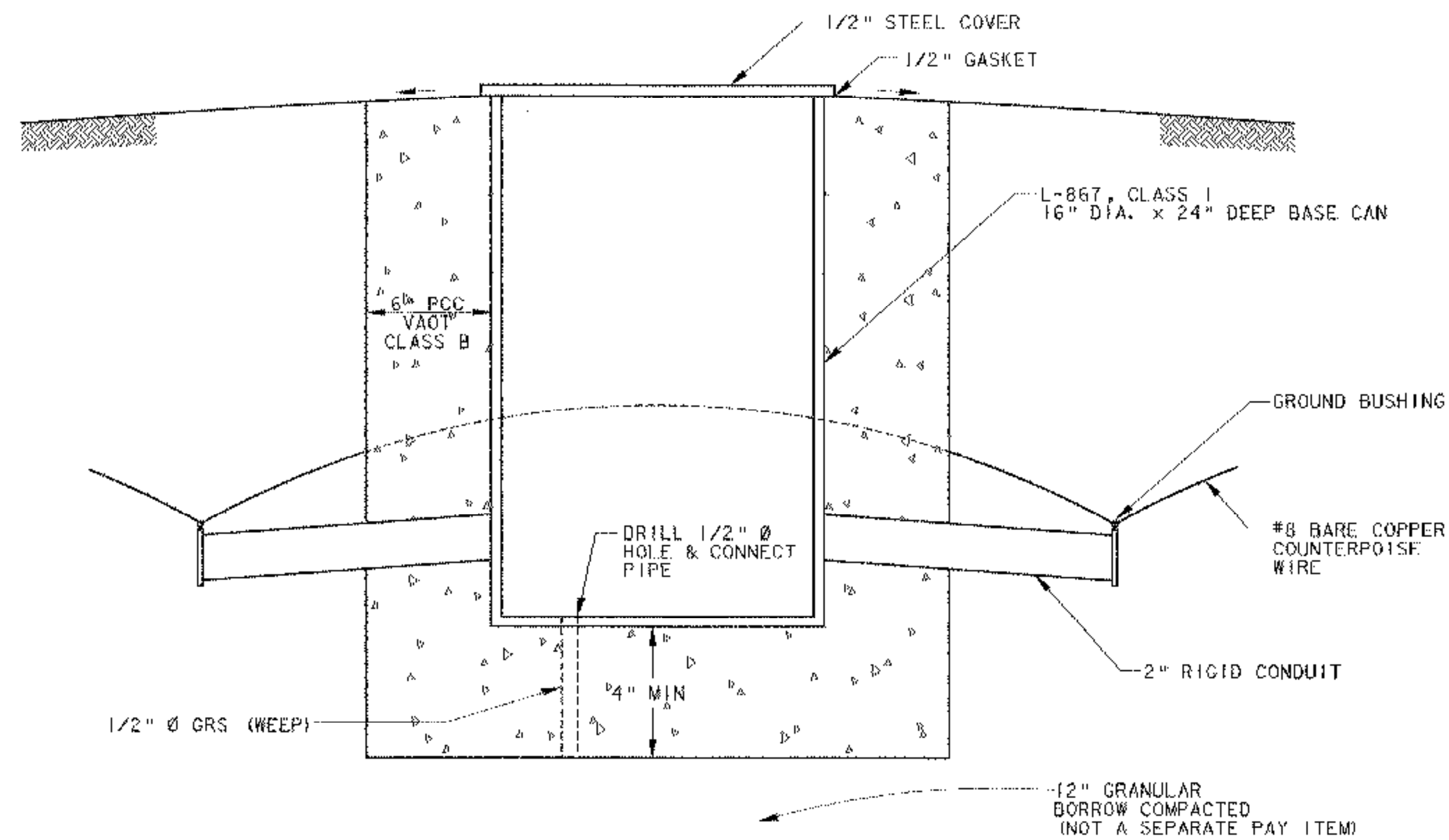
A CONDUIT TRENCH DETAIL (TYP)
SCALE: NONE L-108



B CONDUIT DUCT DETAIL (TYP)
SCALE: NONE



C FIXTURE IDENTIFICATION TAG (TYP)
SCALE: NONE



D CONCRETE MANHOLE WITH CAST IRON COVER (TYP)
SCALE: NONE ITEM 604.11

- NOTES:
- WHERE NECESSARY, HAND EXCAVATE AROUND EXISTING DUCT. EXISTING CABLES MAY BE DIRECT BURIAL.
 - SEE VTRANS STANDARD DRAWING AP-3 FOR ELECTRICAL DUCT DETAIL.
 - SEE VTRANS STANDARD DRAWING D-15 FOR PRE-CAST ELECTRICAL MANHOLE DETAILS.



REV.	DATE	DESCRIPTION

Job No. F200002046.00
File No. F2020460E24

RUTLAND STATE AIRPORT
CLARENDON, VERMONT
TAXIWAY IMPROVEMENTS
AIRFIELD LIGHTING DETAILS

URS
1 NORTHWAY LN.
LATHAM, NEW YORK

Designed by: G.W.D.
Drawn by: M.C.H.
Checked by: L.M.M.
Approved by: G.W.D.

Scale: NTS
Date: FEB., 2003
Sheet 24 OF 40
Sheet No. **24**