

NOTES

- TAXIWAY LIGHTING (MITLS) TO BE 6.6 A SERIES CIRCUIT, 3 STEP MEDIUM INTENSITY, W/ INCANDESCENT LAMPS (BLUE FILTERS).
- NEW CABLES TO BE PLACED IN THE SAME TRENCH WHEN POSSIBLE. NEW MITL'S TO BE PLACED 10' OFF EDGE OF PAVEMENT. NEW CABLES AND CABLE TRENCH TO BE PLACED 10' OFF EDGE OF PAVEMENT.
- RUNWAY I-19 LIGHTING MUST BE OPERATIONAL, WHENEVER INSTRUMENT FLYING RULES OR LOW VISIBILITY (NIGHTTIME) CONDITIONS ARE IN EFFECT. CONTRACTOR TO PLAN HIS WORK TO ENSURE THAT THESE LIGHTS ARE OPERATIONAL WHEN REQUIRED.
- ALL TAXIWAY GUIDANCE SIGNS (TG→) TO BE PLACED 20' OFF EDGE OF PAVEMENT.
- EXISTING WIND CONE TO REMAIN, SEGMENTED CIRCLE TO BE REMOVED AND DISPOSED AS DIRECTED BY THE ENGINEER; PAYMENT TO BE INCIDENTAL TO INSTALLATION OF SEGMENTED CIRCLE, ITEM 680.70
- REMOVAL OF EXISTING TAXIWAY & RUNWAY LIGHTS TO BE INCIDENTAL TO ITEM 864.11
- RELOCATION OF EXISTING ELECTRICAL MANHOLES IS NOT A SEPARATE PAY ITEM, BUT IS INCIDENTAL TO ITEM, 864.09.
- NEW PRECAST ELECTRICAL MANHOLES TO BE CAPABLE OF SUPPORTING A 90,000# AIRCRAFT, USE HEAVY DUTY ELECTRICAL MANHOLE COVER, LB 328, AS MANUFACTURED BY LABARON FOUNDRY OR EQUAL.
- THE CONTRACTOR WILL BE RESPONSIBLE FOR ACQUIRING AN ELECTRICAL PERMIT FOR NEW VAULT WIRING. VERMONT DEPARTMENT OF LABOR AND INDUSTRY REQUIRES THAT WORKING ELECTRICIANS HOLD APPROPRIATE LICENSES.
- REMOVE EXISTING MRL 65. REPLACE WITH NEW FLUSH MOUNTED IN-PAVEMENT MRL (ITEM 864.10)
- REMOVE EXISTING IN PAVEMENT MRL 66A. REPLACE WITH ELEVATED MRL FIXTURE 65. (NOT A SEPARATE PAY ITEM.)

R-64 - GOES & REROUTED TO 419 TO RT & LT TO ELEC. MANHOLE TO R15

LEGEND	
○ R 126	EXISTING RUNWAY LIGHTING (MRLS) BASE MOUNTED ELEVATED.
□ R-66A	EXISTING RUNWAY LIGHTS (MRLS) FLUSH MOUNTED IN PAVEMENT.
○ T-301	EXISTING TAXIWAY LIGHTING (MITLS)
● T-409	NEW TAXIWAY LIGHTS (MITLS)
○ T-316R	RELOCATED TAXIWAY LIGHTS BASE MOUNTED, ELEVATED.
□ TG-21	NEW TAXIWAY GUIDANCE SIGN
□ TG-8	EXISTING TAXIWAY GUIDANCE SIGN
□ TG-8R	RELOCATED TAXIWAY GUIDANCE SIGN
▲	NEW 5/8" d x 8' COPPER CLAD GROUND ROD

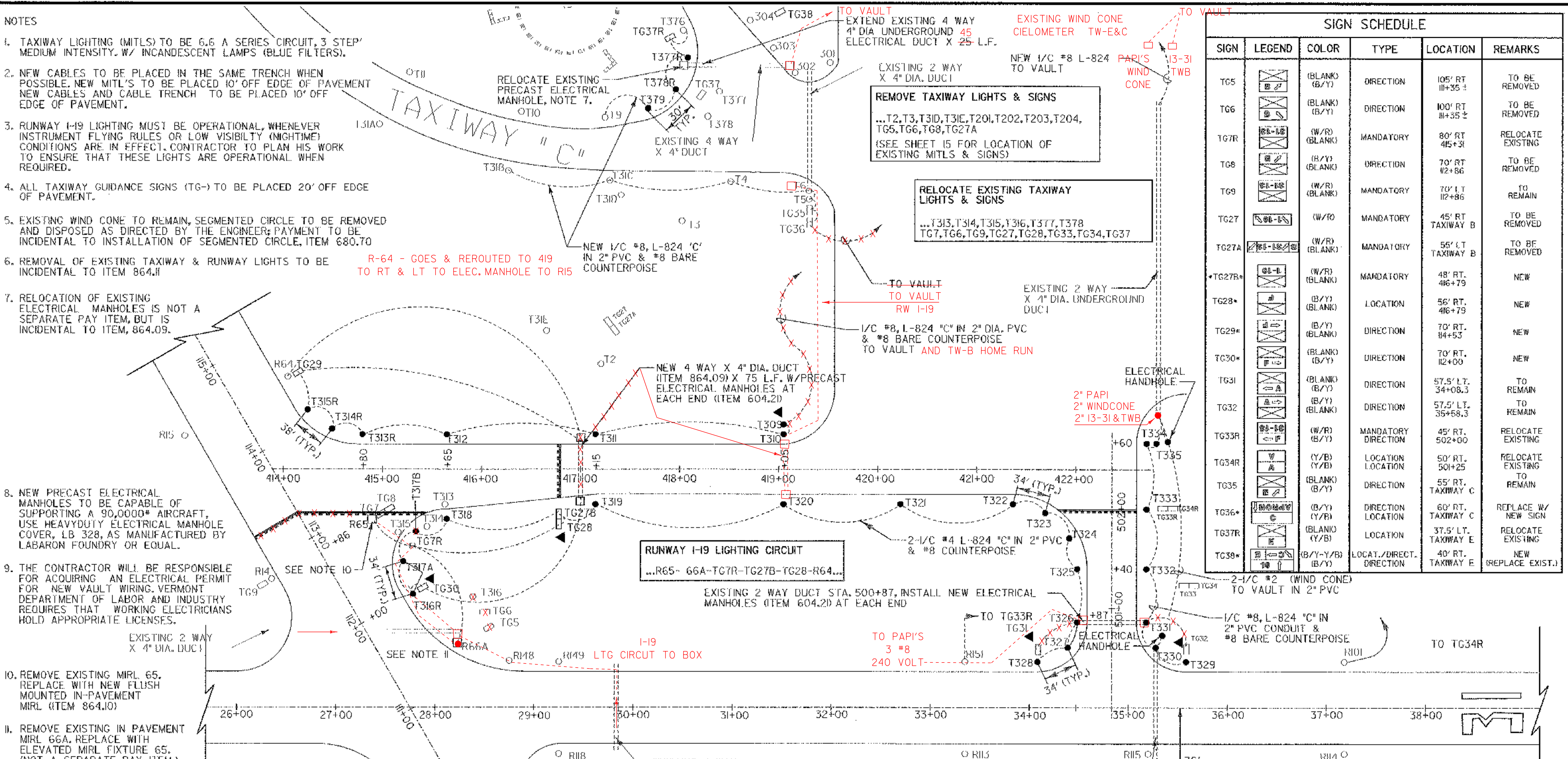
TAXIWAY 'C' LIGHTING CIRCUIT ...T31B-T31C-T4-T6-T5-TG35-TG36-VAULT
TAXIWAY 'E' LIGHTING CIRCUIT ...VAULT-T301-T302-T303... ...T376-TG34-T377R-T378R-T379-T9-T10...
TAXIWAY 'F' LIGHTING CIRCUIT ...T315R-TG29-TG30-T316R...
TAXIWAY 'A' LIGHTING CIRCUIT ...T328-TG8R-TG5R-T320...
RUNWAY I3-31 LIGHTING CIRCUIT ...R151-T33R-TG34R-R101... ...R148-TG7R-TG9R-R147...
RUNWAY I-19 LIGHTING CIRCUIT ...R66-R66A-R65-R64...

SIGN SCHEDULE NOTES:

- ALL SIGNS TO BE L-858, SIZE 1 (18" PANEL WITH 12" LEGEND), STYLE 2, CLASS 2.
- COLORS
W/R = WHITE LEGEND ON RED BACKGROUND
Y/B = YELLOW LEGEND ON BLACK BACKGROUND
B/Y = BLACK LEGEND ON YELLOW BACKGROUND
- * INDICATES NEW SIGN.

INSTALL NEW SEGMENTED CIRCLE AND DIRECTIONAL ARMS, ITEM 680.70 SEE VTRANS STANDARD DRAWING: AP-3

SIGN SCHEDULE					
SIGN	LEGEND	COLOR	TYPE	LOCATION	REMARKS
TG5	[Symbol]	(BLANK) (B/Y)	DIRECTION	105' RT 11+35 ±	TO BE REMOVED
TG6	[Symbol]	(BLANK) (B/Y)	DIRECTION	100' RT 11+35 ±	TO BE REMOVED
TG7R	[Symbol]	(W/R) (BLANK)	MANDATORY	80' RT 45+31	RELOCATE EXISTING
TG8	[Symbol]	(B/Y) (BLANK)	DIRECTION	70' RT 42+86	TO BE REMOVED
TG9	[Symbol]	(W/R) (BLANK)	MANDATORY	70' LT 112+86	TO REMAIN
TG27	[Symbol]	(W/R)	MANDATORY	45' RT TAXIWAY B	TO BE REMOVED
TG27A	[Symbol]	(W/R) (BLANK)	MANDATORY	55' LT TAXIWAY B	TO BE REMOVED
TG27B*	[Symbol]	(W/R) (BLANK)	MANDATORY	48' RT. 416+79	NEW
TG28*	[Symbol]	(B/Y) (BLANK)	LOCATION	56' RT. 416+79	NEW
TG29*	[Symbol]	(B/Y) (BLANK)	DIRECTION	70' RT. 114+53	NEW
TG30*	[Symbol]	(BLANK) (B/Y)	DIRECTION	70' RT. 112+00	NEW
TG31	[Symbol]	(BLANK) (B/Y)	DIRECTION	57.5' LT. 34+08.3	TO REMAIN
TG32	[Symbol]	(B/Y) (BLANK)	DIRECTION	57.5' LT. 35+58.3	TO REMAIN
TG33R	[Symbol]	(W/R) (B/Y)	MANDATORY DIRECTION	45' RT. 502+00	RELOCATE EXISTING
TG34R	[Symbol]	(Y/B) (Y/B)	LOCATION LOCATION	50' RT. 501+25	RELOCATE EXISTING
TG35	[Symbol]	(BLANK) (B/Y)	DIRECTION	55' RT. TAXIWAY C	TO REMAIN
TG36*	[Symbol]	(B/Y) (Y/B)	DIRECTION LOCATION	60' RT. TAXIWAY C	REPLACE W/ NEW SIGN
TG37R	[Symbol]	(BLANK) (Y/B)	LOCATION	37.5' LT. TAXIWAY E	RELOCATE EXISTING
TG38*	[Symbol]	(B/Y-Y/B) (B/Y)	LOCAT./DIRECT. DIRECTION	40' RT. TAXIWAY E	NEW (REPLACE EXIST.)



SCALE 1" = 50'-0"



DESIGNED BY: G.W.D.	FILE NO. F2020460002E2
DRAWN BY: M.C.M.	DESCRIPTION
CHECKED BY: L.M.M.	REV. DATE
APPROVED BY: G.W.D.	Job No. F200002046.00

RUTLAND STATE AIRPORT
CLARENDON, VERMONT

TAXIWAY IMPROVEMENTS
TAXIWAY LIGHTING LAYOUT

URS
1 NORTHWAY LN.
LATHAM, NEW YORK

Scale: 1"=50'	Date: FEB, 2003
Sheet 22 OF 40	Project No. 22

PROJECT "B"
A.I.P. 3-50-0015-17