



REV.	DATE	DESCRIPTION

RUTLAND STATE AIRPORT
CLARENDON, VERMONT

TAXIWAY IMPROVEMENTS
TAXIWAY LIGHTING LAYOUT

URS
1 NORTHWAY LN.
LATHAM, NEW YORK

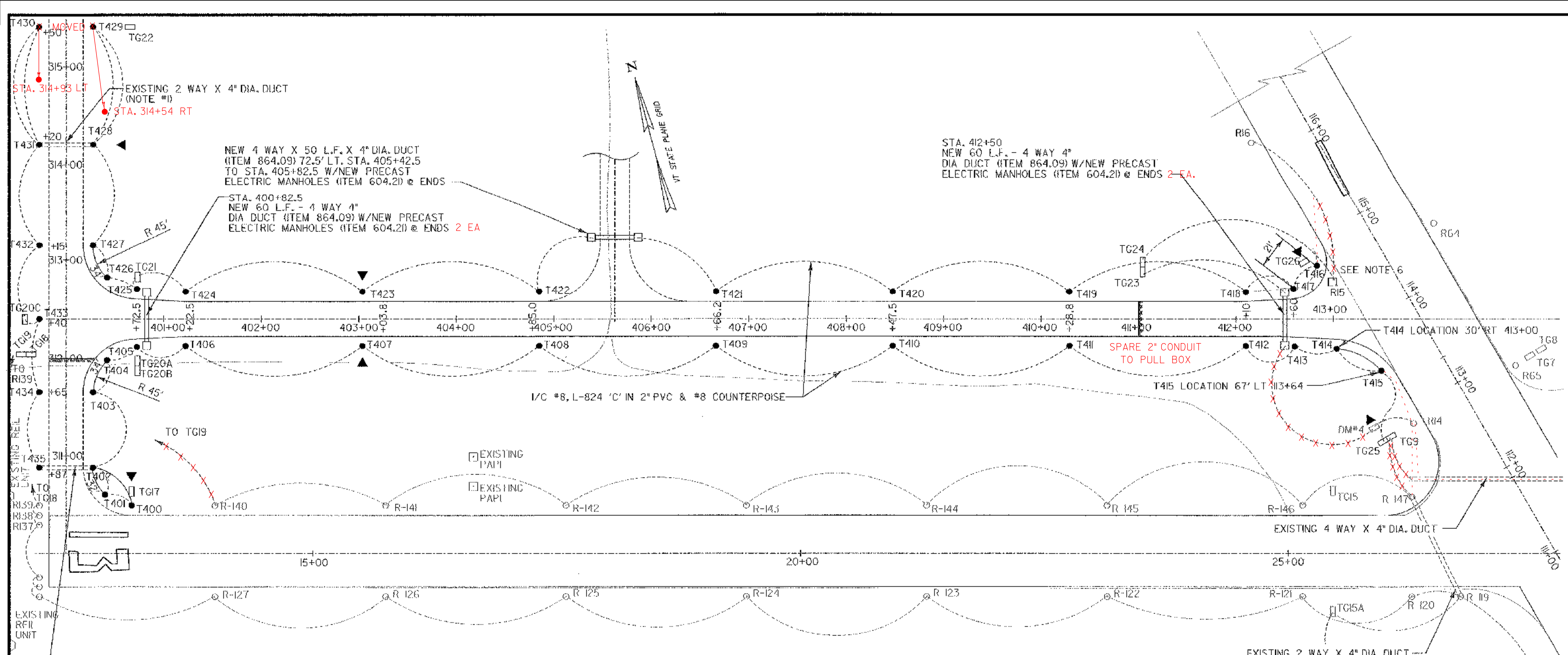
Designed by: G.W.D.
Drawn by: M.C.M.
Checked by: L.M.M.
Approved by: G.W.D.

Scale: 1"=50'

Date: FEB., 2003

Sheet 21 of 40

Sheet No. **21**

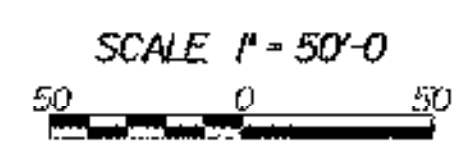


NEW 4 WAY X 50 L.F. X 4" DIA. DUCT (ITEM 864.09) 72.5' LT. STA. 405+42.5 TO STA. 405+82.5 W/NEW PRECAST ELECTRIC MANHOLES (ITEM 604.21) @ ENDS

STA. 400+82.5 NEW 60 L.F. - 4 WAY 4" DIA DUCT (ITEM 864.09) W/NEW PRECAST ELECTRIC MANHOLES (ITEM 604.21) @ ENDS 2 EA

STA. 412+50 NEW 60 L.F. - 4 WAY 4" DIA DUCT (ITEM 864.09) W/NEW PRECAST ELECTRIC MANHOLES (ITEM 604.21) @ ENDS 2 EA.

- NOTES**
- REFER TO PLANS FOR APRON DEVELOPMENT, PHASE I BY McFARLAND - JOHNSON, INC. DATED JANUARY, 2001.
 - TAXIWAY LIGHTING (MITLS) TO BE 6.6 AMP SERIES CIRCUIT, 3 STEP MEDIUM INTENSITY. W/ INCANDESCENT LAMPS (BLUE FILTERS).
 - NEW CABLES TO BE PLACED IN THE SAME CONDUIT AND TRENCH WHEN POSSIBLE. NEW MITLS TO BE PLACED 10' OFF EDGE OF PAVEMENT. NEW CABLES AND CABLE TRENCH TO BE PLACED 10' OFF EDGE OF PAVEMENT.
 - RUNWAY I-19 LIGHTING MUST BE OPERATIONAL, WHENEVER INSTRUMENT FLYING RULES OR LOW VISIBILITY (NIGHTTIME) CONDITIONS ARE IN EFFECT. CONTRACTOR TO PLAN HIS WORK TO ENSURE THAT THESE LIGHTS ARE OPERATIONAL WHEN REQUIRED.
 - ALL TAXIWAY GUIDANCE SIGNS (TG-) TO BE PLACED 20' OFF EDGE OF PAVEMENT.
 - REPLACE EXISTING BASE MOUNTED MRL, R15, WITH NEW IN PAVEMENT MRL, L-850-C (ITEM 864.10). USE MRLS SIMILAR TO EXISTING (HUGHEY & PHILLIPS) LOW PROFILE, OR APPROVED EQUAL.
 - NEW PRECAST ELECTRICAL MANHOLES TO BE CAPABLE OF SUPPORTING A 90,000# AIRCRAFT, USE HEAVY DUTY ELECTRICAL MANHOLE COVER, LB 328, AS MANUFACTURED BY LABARON FOUNDRY OR EQUAL.



EXISTING WIRING CIRCUITS	PROPOSED WIRING CIRCUITS
RUNWAY I-19	RUNWAY I-19
... R12-R13-TG15A-TG15-R14-DM*4-R15 R14-DM4-TG23-TG24-R15-R16 ...
RUNWAY I3-31	RUNWAY I3-31
... R18*-TG4*-TG3-R19-R120 R141-R140-TG19-TG18-R139 ...
... R140-R139-R138 ...	TAXIWAY "E"
... R146-R147-TG9-TG7*-R148* ...	HOME RUN → TG25-T415-T414-T413-T412 ...
* = EAST OF RUNWAY I-19	... T418-T417-T416-TG26 → HOME RUN
	... T403-T402-T401-T400-T435-T434 ...
	... T431-T430-T429-T428-TG22-T427 ...

LEGEND	
○ R-146	EXISTING RUNWAY LIGHTING (MRLS) BASE MOUNTED, ELEVATED.
□ R-15	NEW RUNWAY LIGHT (MRL) FLUSH MOUNTED IN PAVEMENT. SPLIT LENS AMBER/WHITE
○ T-301	EXISTING TAXIWAY LIGHTING (MITLS)
● T-409	NEW TAXIWAY LIGHTS (MITLS)
○ T-316R	RELOCATED TAXIWAY LIGHTS BASE MOUNTED, ELEVATED.
□ TG-21	NEW TAXIWAY GUIDANCE SIGN
□ TG-8	EXISTING TAXIWAY GUIDANCE SIGN (TYPICAL)
▲	NEW 5/8" dia. X 8' COPPER CLAD GROUND ROD

SIGN SCHEDULE					
SIGN	LEGEND	COLOR	TYPE	LOCATION	REMARKS
DM*4			L-858B SIZE 4	85' LT. 113+00	TO REMAIN
TG9		(W/R) (BLANK)	MANDATORY	70' LT. 112+86	TO REMAIN
TG15		(BLANK) (W/R)	MANDATORY	57.5' LT. 25+46	TO REMAIN
TG15A		(BLANK) (W/R)	MANDATORY	57.5' RT. 25+46	TO REMAIN
TG17		(B/Y) (BLANK)	DIRECTION	57.5 LT. 13+14.3	NEW
TG18		(W/R) (Y/B)	MANDATORY LOCATION	37.5' RT. 312+00	NEW
TG19		(Y/B) (B/Y)	LOCATION DIRECTION	42.5' LT. 312+00	NEW
TG20A		(B/Y) (B/Y)	DIRECTION DIRECTION	40' RT. 400+72.5	NEW
TG20B		(Y/B) (Y/B)	LOCATION LOCATION	45' RT. 400+72.5	NEW
TG20C		(BLANK) (Y/B)	DIRECTION	20' RT. 312+40	NEW
TG21		(B/Y) (BLANK)	DIRECTION	40' LT. 410+72.5	NEW
TG22		(Y/B) (Y/B)	LOCATION LOCATION	37.5' RT. 315+50	NEW

SIGN SCHEDULE					
SIGN	LEGEND	COLOR	TYPE	LOCATION	REMARKS
TG23		(BLANK) (W/R)	MANDATORY	37.5' RT. 411+00	NEW
TG24		(Y/B) (Y/B)	LOCATION LOCATION	42.5' LT. 411+00	NEW
TG25		(BLANK) (B/Y)	DIRECTION	75' LT. 112+86	NEW
TG26		(B/Y) (BLANK)	DIRECTION	70' LT. 114+88	NEW

NOTES:

- ALL SIGNS TO BE L-858, SIZE 108" PANEL WITH 12" LEGEND, STYLE 2, CLASS 2.
- COLORS
W/R = WHITE LEGEND ON RED BACKGROUND
Y/B = YELLOW LEGEND ON BLACK BACKGROUND
B/Y = BLACK LEGEND ON YELLOW BACKGROUND

PROJECT "A"
A.I.P. 3-50-0015-17