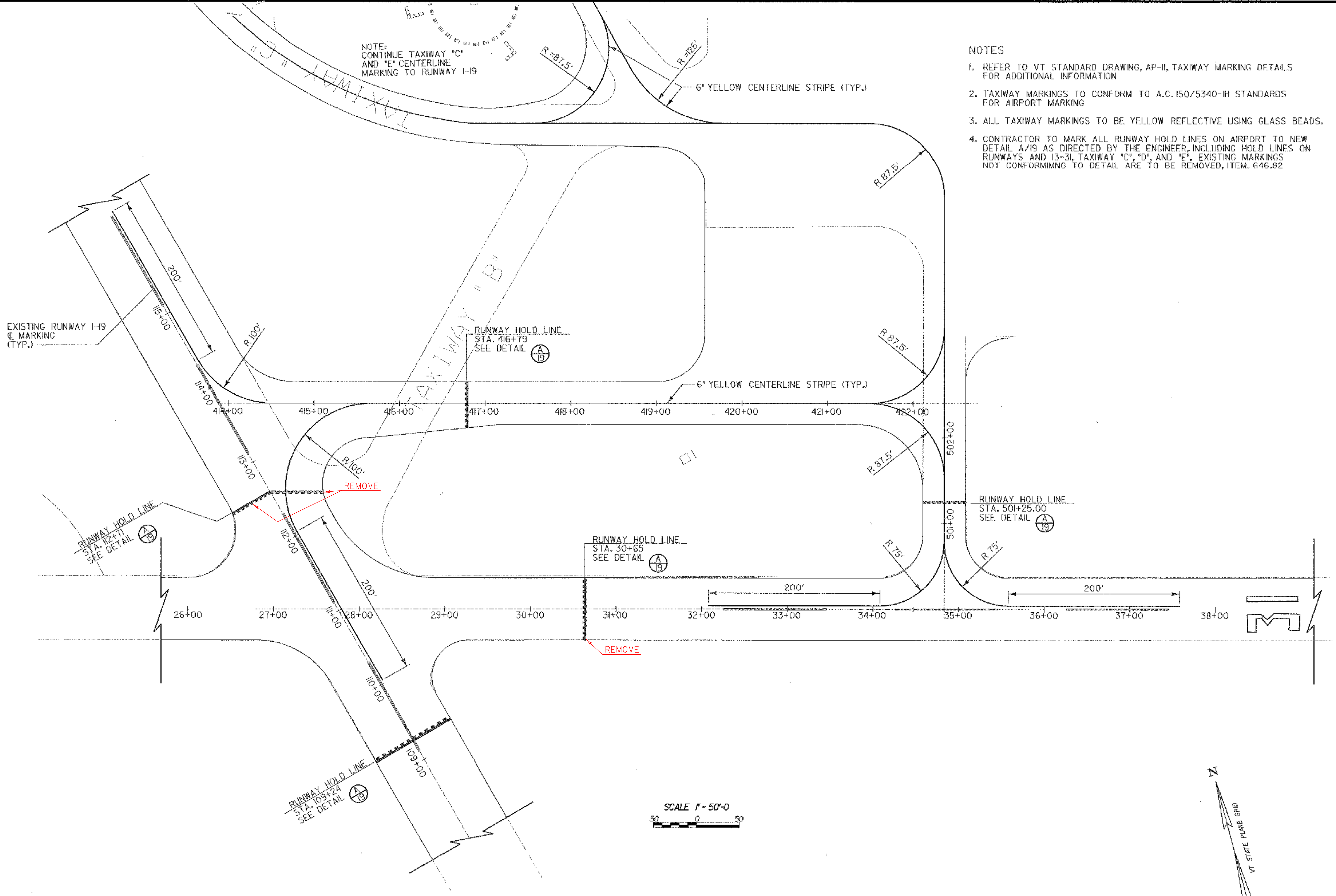


NOTE:  
CONTINUE TAXIWAY "C"  
AND "E" CENTERLINE  
MARKING TO RUNWAY I-19

NOTES

1. REFER TO VT STANDARD DRAWING, AP-II, TAXIWAY MARKING DETAILS FOR ADDITIONAL INFORMATION
2. TAXIWAY MARKINGS TO CONFORM TO A.C. 150/5340-1H STANDARDS FOR AIRPORT MARKING
3. ALL TAXIWAY MARKINGS TO BE YELLOW REFLECTIVE USING GLASS BEADS.
4. CONTRACTOR TO MARK ALL RUNWAY HOLD LINES ON AIRPORT TO NEW DETAIL A/19 AS DIRECTED BY THE ENGINEER, INCLUDING HOLD LINES ON RUNWAYS AND 13-31, TAXIWAY "C", "D", AND "E". EXISTING MARKINGS NOT CONFORMING TO DETAIL ARE TO BE REMOVED, ITEM. 646.82



REV.	DATE	DESCRIPTION

Job No. F200002046.00  
File No. F20204600E20

**RUTLAND STATE AIRPORT**  
CLARENDON, VERMONT

**TAXIWAY IMPROVEMENTS**  
**MARKING PLAN-TAXIWAY "B" EAST**

**URS**  
1 NORTHWAY LN.  
LATHAM, NEW YORK

Designed by: G.W.D.  
Drawn by: M.C.M.  
Checked by: M.K.C.  
Approved by: G.W.D.

Scale: 1"=50'  
Date: FEB., 2003  
Sheet 20 OF 40

Sheet No. **20**

**PROJECT "B"**  
**A.I.P. 3-50-0015-17**