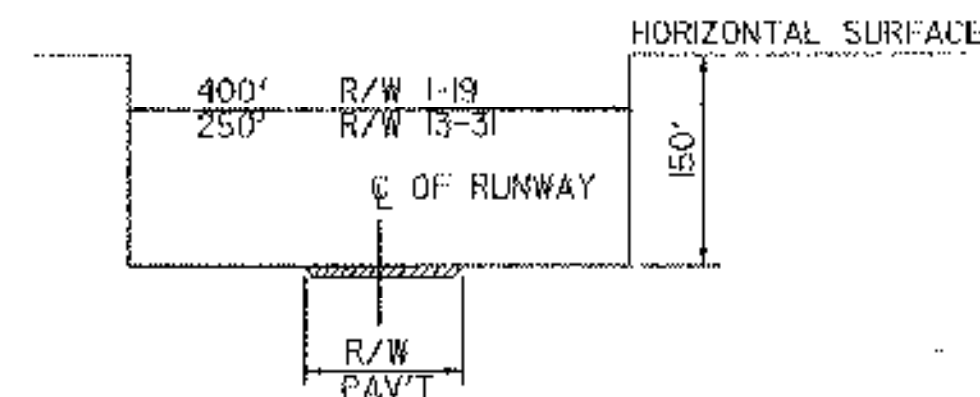


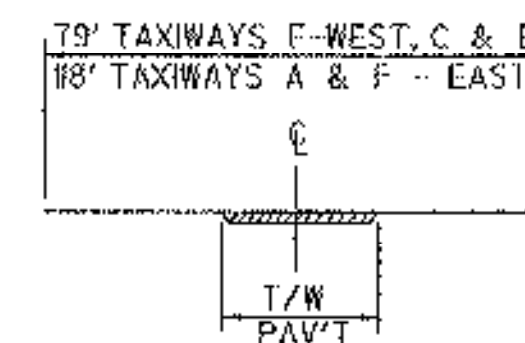
PROJECT DESCRIPTION

PROJECT "A"
 (1) CONSTRUCT, MARK AND LIGHT PARTIAL PARALLEL TAXIWAY "F" (WEST) TO RUNWAY 13 (35' x 1314 L.F.)

PROJECT "B"
 (1) CONSTRUCT, MARK AND LIGHT PARTIAL PARALLEL TAXIWAY "F" (EAST) BETWEEN TAXIWAY "A" AND RUNWAY 1-19 (50' X 763 L.F.)
 (2) RECONSTRUCT TAXIWAY "A" (50' X 240 L.F.)
 (3) EXPAND TERMINAL APRON (5100 S.Y.)
 (4) NEW WIND CONE AND SEGMENTED CIRCLE.



C RUNWAY OBSTACLE FREE ZONE TYP SECTION
 SCALE = NONE

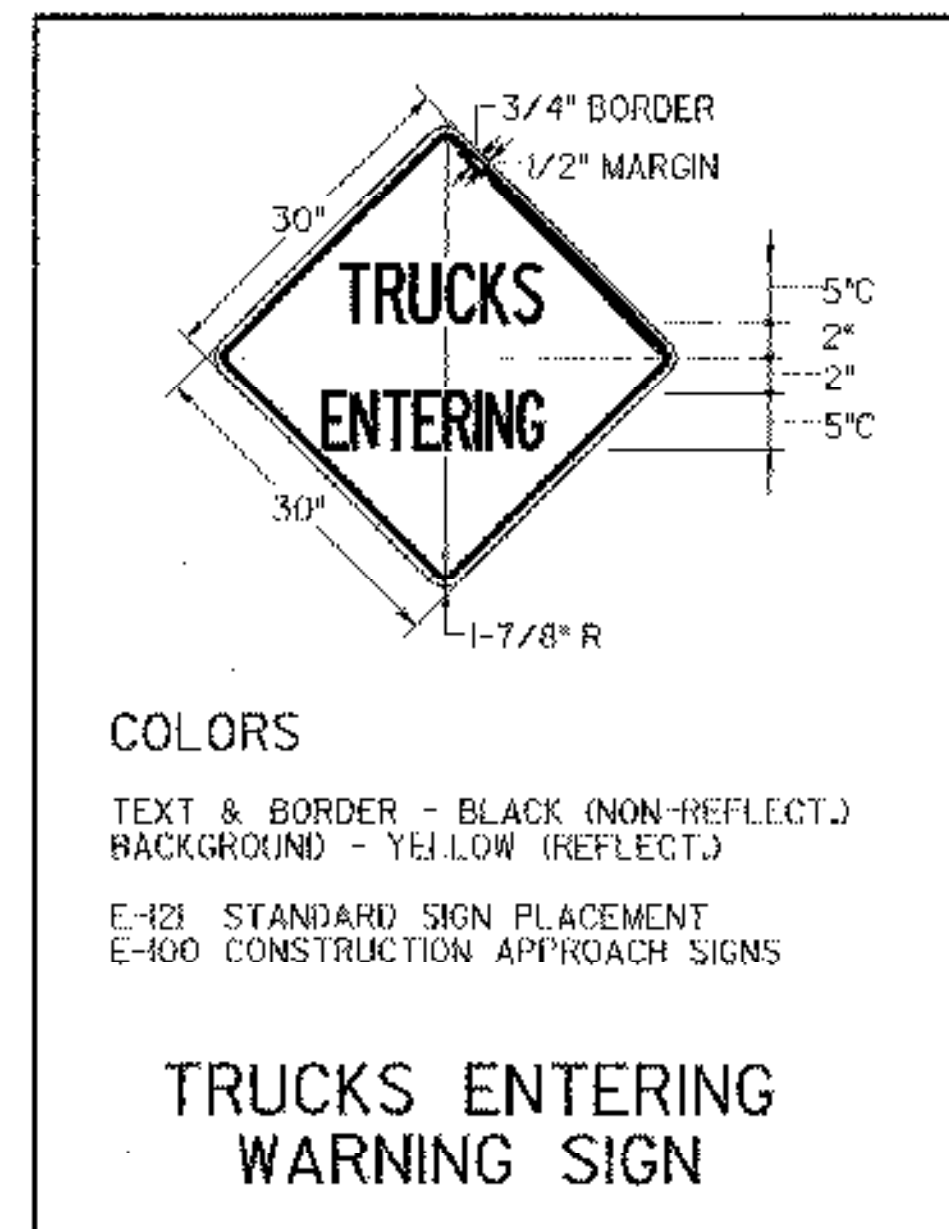


D TAXIWAY SAFETY AREA
 SCALE = NONE



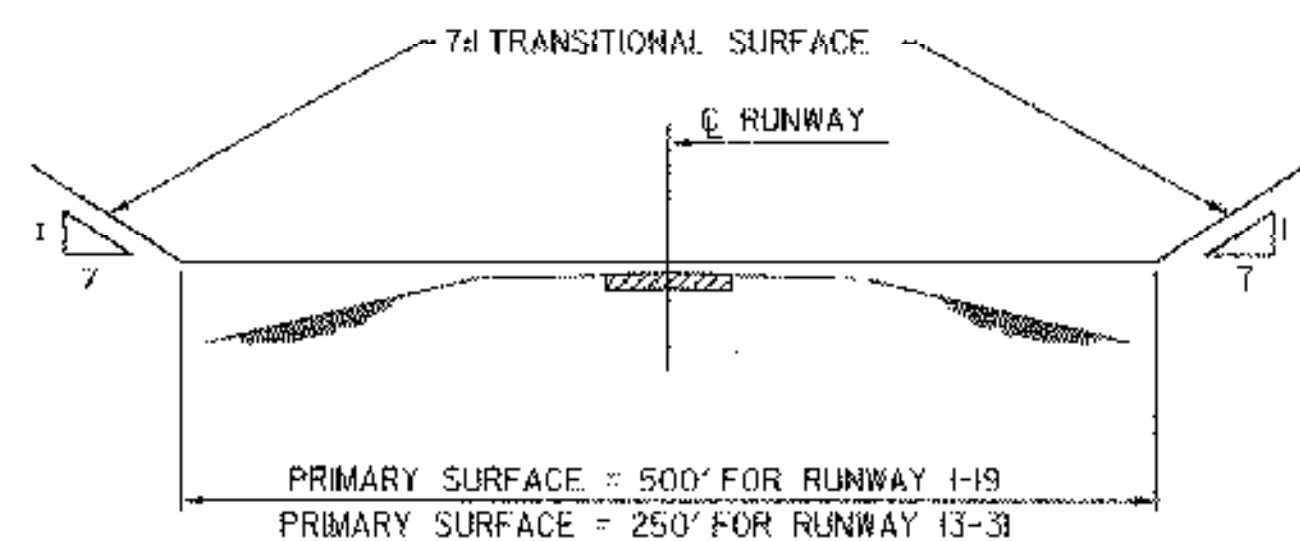
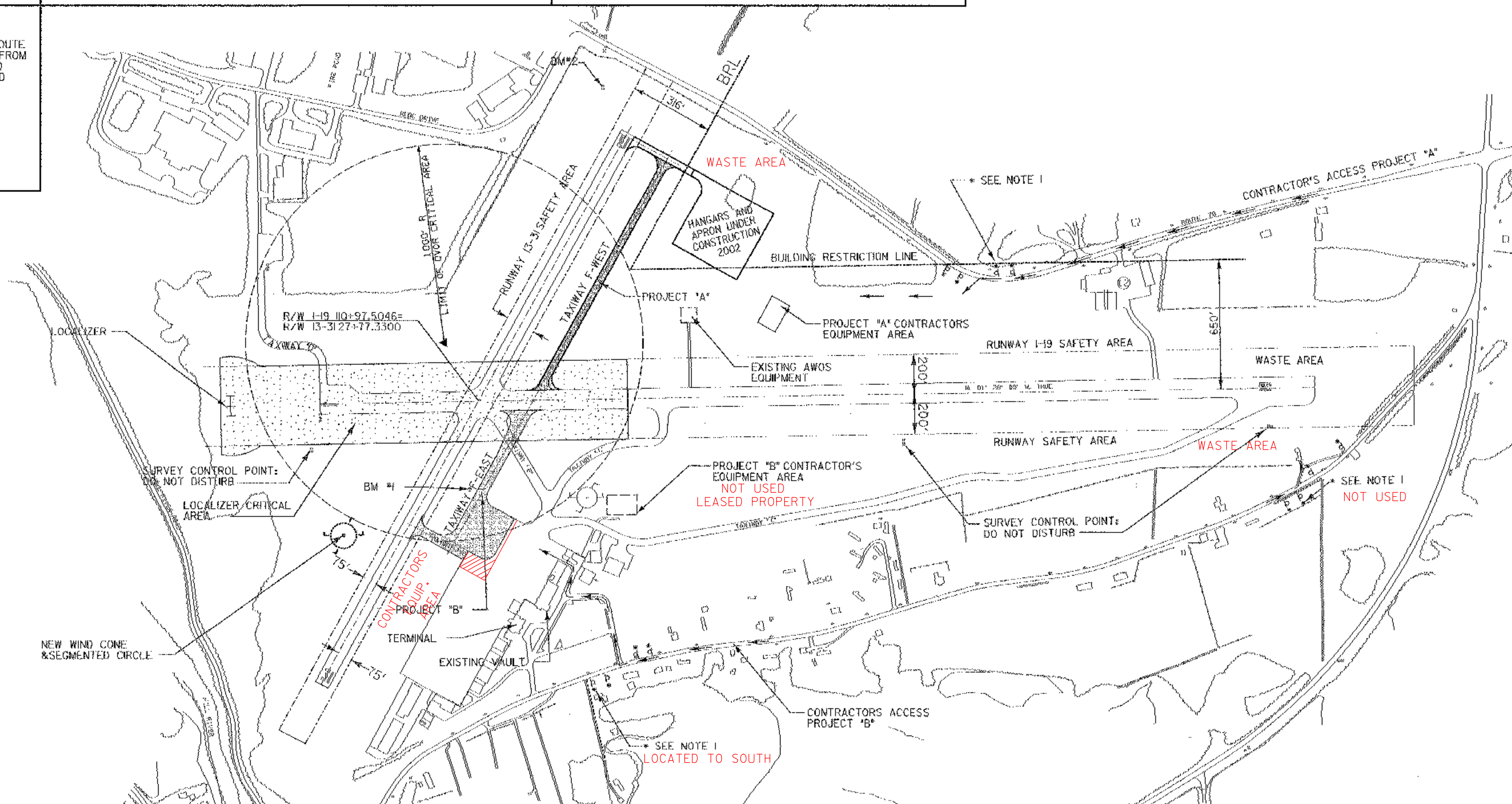
NOTES

- TWO (2) TRUCK ENTERING SIGNS TO BE PLACED ON ROUTE 7B AND AIRPORT ROAD APPROXIMATELY 150' AND 75' FROM THE CONTRACTOR'S ENTRANCES TO THE AIRPORT AND WASTE AREA. IN EACH DIRECTION. SIGNS TO BE PLACED AT LEAST 8' OFF ROADWAY EDGE OF PAVEMENT.
- BENCHMARK #1 DISK 650M, 1979
 374614.055N, 1521821.019E
 ELEVATION 782.54
- BENCHMARK #2 DISK 1105, 1987
 378552.173N, 1520976.989E
 ELEVATION 773.79
 783.36 - DISK 100E

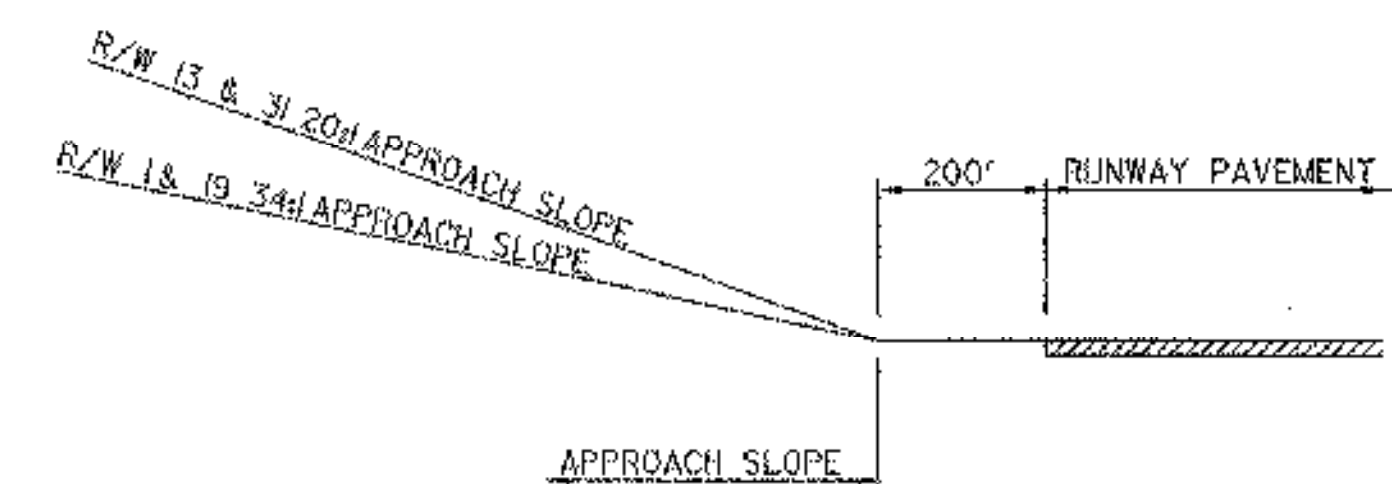


COLORS
 TEXT & BORDER - BLACK (NON-REFLECT.)
 BACKGROUND - YELLOW (REFLECT.)
 E-121 STANDARD SIGN PLACEMENT
 E-100 CONSTRUCTION APPROACH SIGNS

TRUCKS ENTERING WARNING SIGN



A TYPICAL SECTION F.A.R. PART 77 IMAGINARY SURFACES
 NOT TO SCALE



B TYPICAL PROFILE F.A.R. PART 77 IMAGINARY SURFACES
 NOT TO SCALE



REV.	DATE	DESCRIPTION

RUTLAND STATE AIRPORT
 CLARENDON, VERMONT
TAXIWAY IMPROVEMENTS
GENERAL PROJECT LAYOUT

URS
 1 NORTHWAY LN.
 LATHAM, NEW YORK

Designed by: G.W.D.
 Drawn by: M.H.
 Checked by:
 Approved by:
 Scale: 1" = 300'
 Date: FEB., 2003
 Sheet 4 OF 40
 Sheet No. **4**