

Annual Mileage Certificates

Annual processing of the Mileage Certificates for 270 municipalities, including towns, cities, gores, grant, and incorporated villages.

Changes include additions, alterations, reclassifications and discontinuances of highways and trails.

An annual mileage summary is produced for use in the formula for the apportionment of state aid for town highways and feeds the Certified Public Highway Mileage Report.

District 8
Certcode 0612-0

**CERTIFICATE OF HIGHWAY MILEAGE
YEAR ENDING FEBRUARY 10, 2021**

Fill out form, make and file a copy with the Town Clerk, and submit the Mileage Certificate on or before February 20, 2021 to: Vermont Agency of Transportation, Division of Policy, Planning and Intermodal Development, Mapping Section through upload to the secure FTP site or if necessary via mail to: VTrans PP-AID - Mapping Section, 2178 Airport Rd, Unit B, Berlin, VT 05641.

We, the members of the legislative body of SAINT ALBANS CITY in FRANKLIN County on an oath state that the mileage of Highways, according to Vermont Statutes Annotated, Title 19, Section 305, added 1985, is as follows:

PART I - CHANGES TOTALS - Please fill in and calculate totals.

Town Highways	Previous Mileage	Added Mileage	Subtracted Mileage	Total	Scenic Highways
Class 1	4.281	0	0	4.281	0.000
Class 2	3.770	0	0	3.770	0.000
Class 3	16.74	0.05	0.13	16.66	0.000
State Highway	0.059	0	0	0.059	0.000
Total	24.850	0.05	0.13	24.77	0.000
* Class 1 Lane	0.248	0	0	0.248	
* Class 4	0.02	0	0	0.02	0.000
* Legal Trail	0.00	0	0	0.00	

S.M.
K.A.
J.B.

* Mileage for Class 1 Lane, Class 4, and Legal Trail classifications are NOT included in total.

PART II - INFORMATION AND DESCRIPTION OF CHANGES SHOWN ABOVE.

1. NEW HIGHWAYS: Please attach Selectmen's "Certificate of Completion and Opening".

Cota Court +0.05 m CL3 TH-183 Cota Ct new road

2. DISCONTINUED: Please attach SIGNED copy of proceedings (minutes of meeting).

Crest Road -0.13 mi CL3 TH-122 Crest Rd discontinued

3. RECLASSIFIED/REMEASURED: Please attach SIGNED copy of proceedings (minutes of meeting).

4. SCENIC HIGHWAYS: Please attach a copy of order designating/discontinuing Scenic Highways.

IF THERE ARE NO CHANGES IN MILEAGE: Place an X in the box and sign below.

PART III - SIGNATURES - PLEASE SIGN.

Signatures of Selectmen/ Aldermen/ Trustees:

Signature of T/C/V Clerk: _____ Date Filed: 2/10/2021

Please sign ORIGINAL and return it for Transportation signature.

AGENCY OF TRANSPORTATION APPROVAL: Signed copy will be returned to T/C/V Clerk.

APPROVED: E-SIGNED by Johnathan Croft on 2021-02-10 09:21:12 EST DATE: March 10, 2021
Representative, Agency of Transportation

Certified Public Highway Mileage

Annually, Mapping compiles the Certified Public Highway Mileage and submits the report to the Federal Highway Administration (FHWA) on or before June 1st.

This mileage table is a key input to the mileage used by the Highway Performance Monitoring System (HPMS) used by the VTrans Asset Management & Performance Bureau.

VERMONT AGENCY OF TRANSPORTATION
DIVISION OF POLICY, PLANNING AND INTERMODAL DEVELOPMENT

STATE OF VERMONT - HIGHWAY MILEAGE - FOR YEAR OF 2016

Summarized by TOWN and COUNTY
Figures reported as of February 10, 2016

County	Class 1 Lane Highway	Class 1	Class 2	Class 3	Class 4	Legal Trail	Unidentified Corridor	State Highway	Total Class 1,2,3 and St Hwy	Scenic Highway
ADDISON	0.510	7.964	243.840	582.73	89.94	19.10	0.00	188.830	1,023.364	14.418
BENNINGTON	0.597	12.921	149.400	454.15	65.38	37.67	0.00	169.475	785.946	0.000
CALEDONIA	0.046	8.269	195.005	701.13	151.57	36.06	0.00	214.830	1,119.234	0.000
CHITTENDEN	12.568	16.409	287.510	715.10	36.58	10.60	0.00	174.514	1,193.533	3.050
ESSEX	0.102	1.709	60.455	172.70	71.45	20.70	0.00	121.302	356.166	0.000
FRANKLIN	0.249	12.197	221.050	583.41	83.94	12.48	0.00	211.385	1,028.042	0.000
GRAND ISLE	0.000	0.000	44.960	83.22	3.17	0.32	0.00	45.100	173.280	0.000
LAMOILLE	0.405	4.371	95.150	380.05	88.00	18.97	0.00	121.639	601.210	22.025

MILEAGE PROOF

PUBLIC ROAD MILEAGE: Vermont, Calendar 2017
AS OF FEBRUARY 10, 2018

22-May-18

State Certified Mileage	Miles	FEDERAL-AID SYSTEM	Functional Class		Proposed Miles	
			FC Code	Miles		
CLASS 1 TOWN HWY.	139,583	Interstate	1	320,278	13	
CLASS 2 TOWN HWY.	2,789,290		PA-Other	2		17,725
CLASS 3 TOWN HWY.	8,537,380			3		455,921
STATE HWY.	2,709,251		4	882,919		
SUB-TOTAL	14,175,504	Major Collectors	5	2,218,672		
Army	12,030	Minor Collectors	6	32,089		
Nat'l Forest Service	78,080	TOTAL F.A. SYSTEM		3,927,604		
Fish & Wildlife Service	41,230	LESS F.A. SYSTEM		3,927,604		
Navy	0,040	TOTAL PUBLIC ROAD MILES		10,326,455		
Army Corps of Engineers	32,080					
National Park Service	0,030					
Other US Government Highway**	0,000					
SUB-TOTAL	163,490					
TOTAL	14,338,994					
LESS RAMP	75,531					
LESS OTHER FACILITIES*	9,404					

1 1/2 Does not include 23,969 class 1 town highway lane mileage.

*Added "LESS OTHER FACILITIES" because Approach, Spurs, Jughandles included in mileage totals and these need to be backed out and non-inventory direction

** 0.211 miles of Border Patrol/Customs in Richford not accounted for in VTrans mileage and not appearing in FEDMILE report.

VTrans Road Centerline Data

Mapping maintains road centerline data to show where the classified highway mileage is and to also store a wide range of attributes about the highway segments. This includes class, name, surface type, functional class, NHS status, federal aid number, one-way or bi-directional, etc.

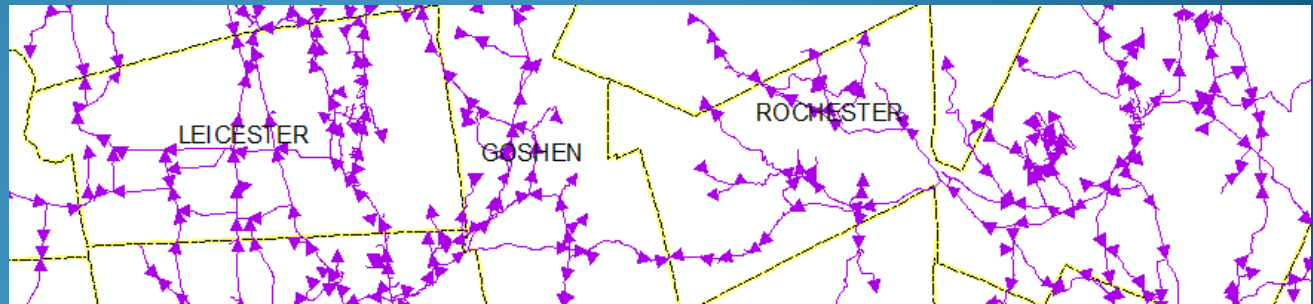
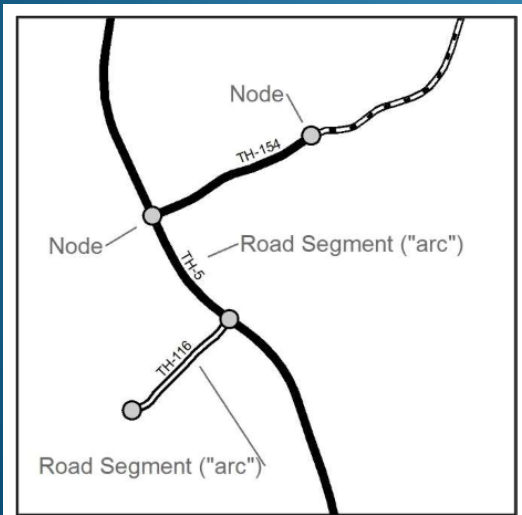
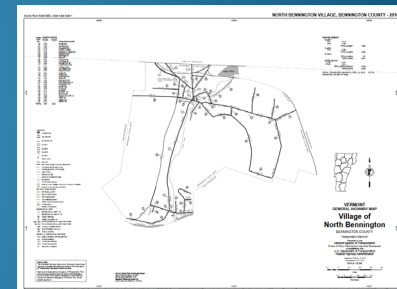
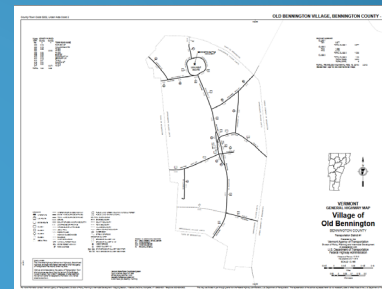
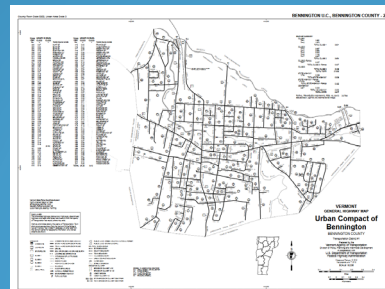
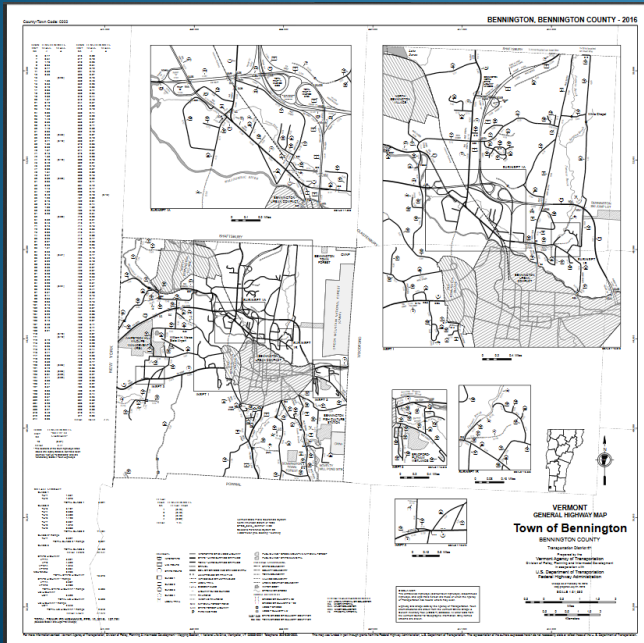
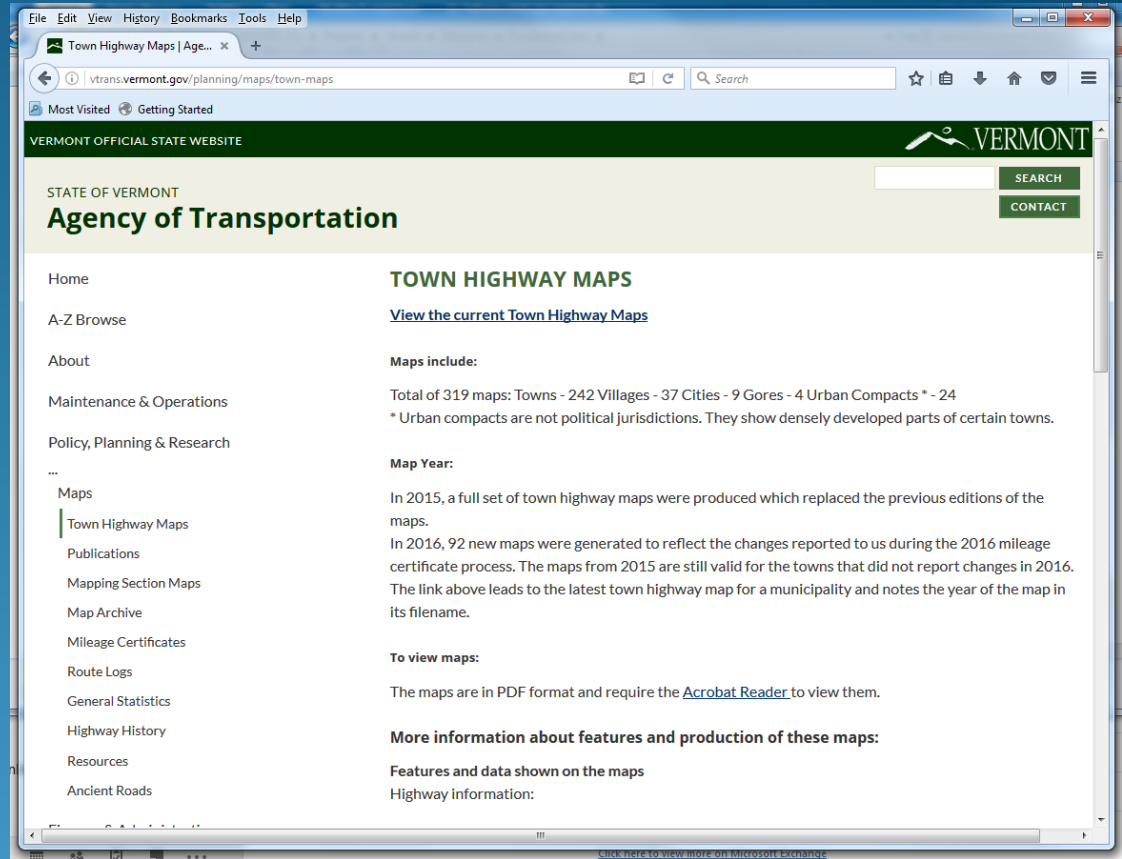


Figure 1

[VTrans Road Centerline Feature Service – 6 month publish](#)
[VTrans Road Centerline Feature Service – nightly publish](#)
[VTrans Road Centerline Spatial Data User Guide](#)

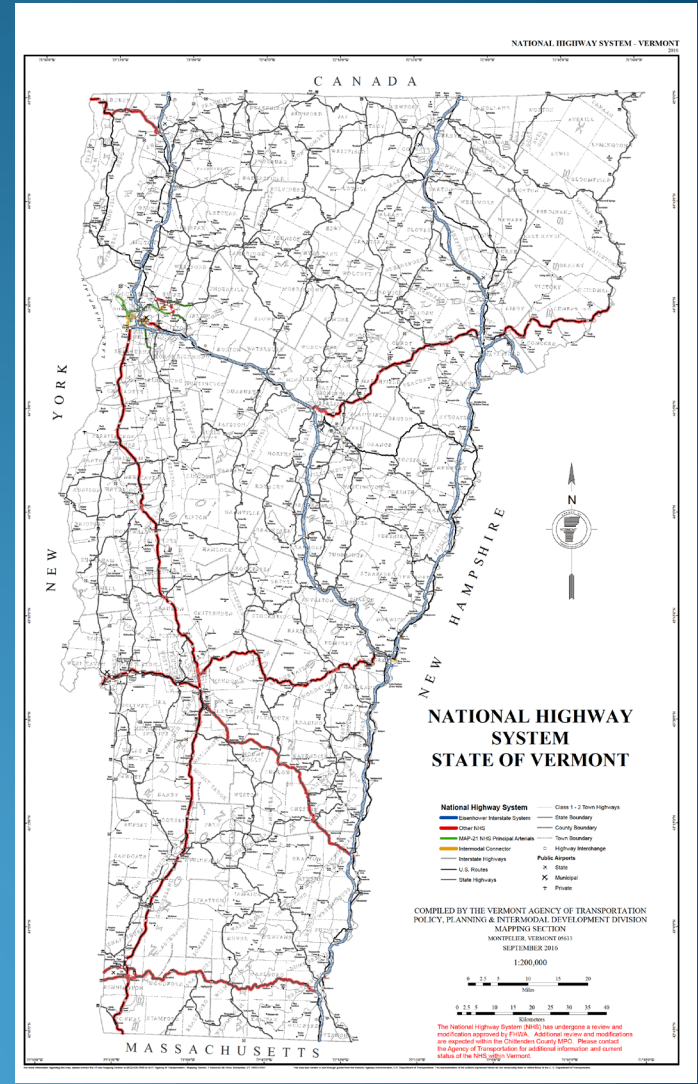
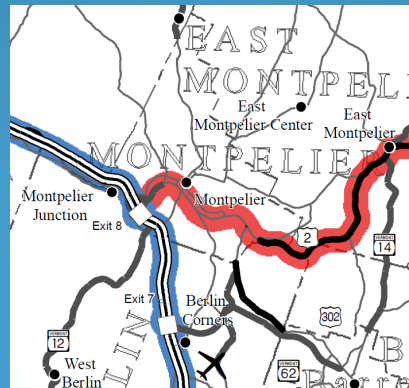
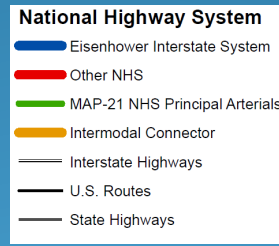
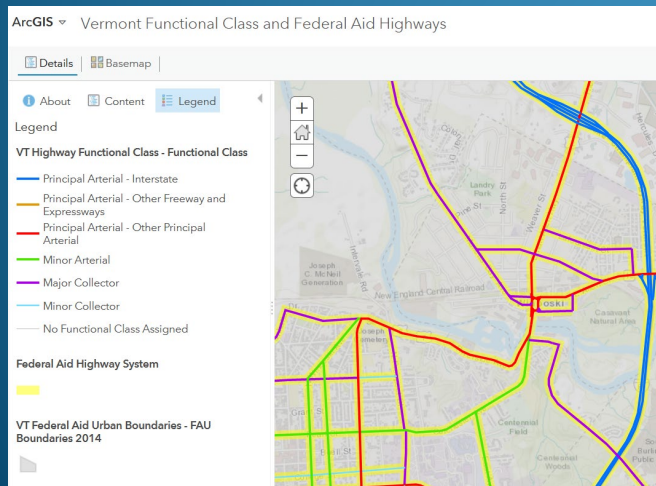
Town Highway Maps

The Mapping Section produces 319 individual Town Highway Maps of each municipality in Vermont.

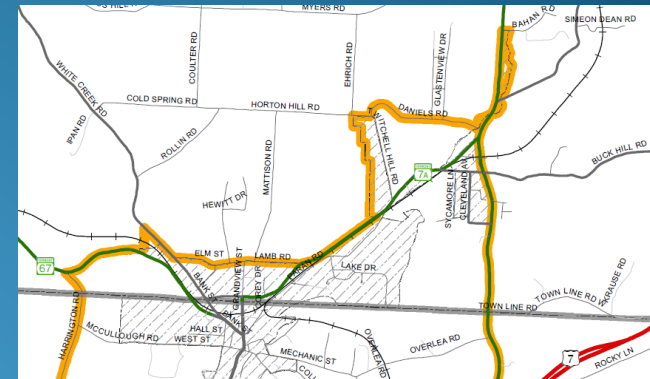
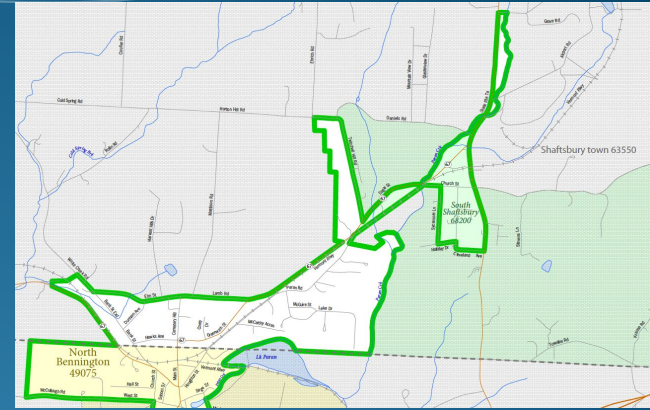
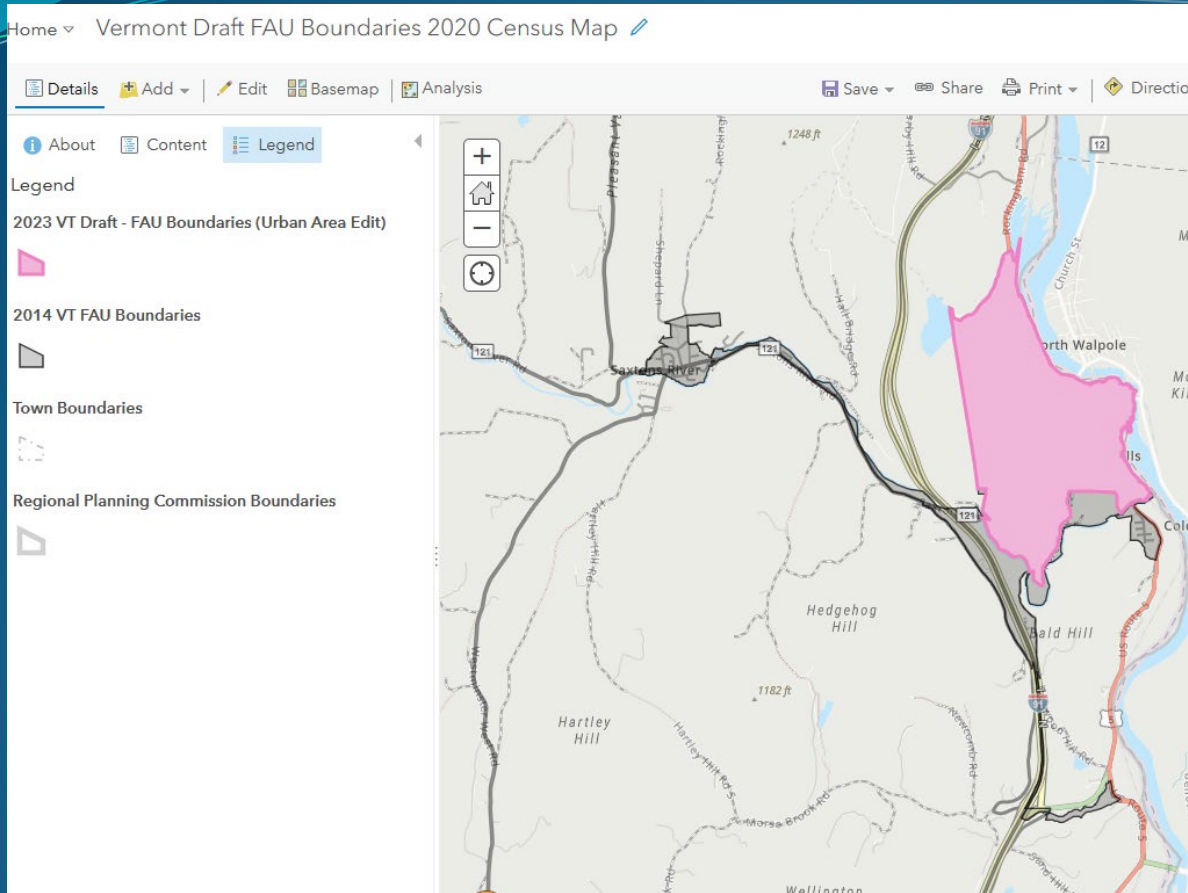


National Highway System and Functional Classification of Highways

In 2016, the Mapping Section took over the responsibility of mapping the National Highway System (NHS) and the Functional Classification of the highways. This includes coordination with Regional Planning Commissions and FHWA.



Federal Aid Urban Areas (FAU)



Mapping oversees the Federal Aid Urban Area (FAU) boundaries and their adjustments that occur following the decennial census. There is a current TPI project to adjust the boundaries.

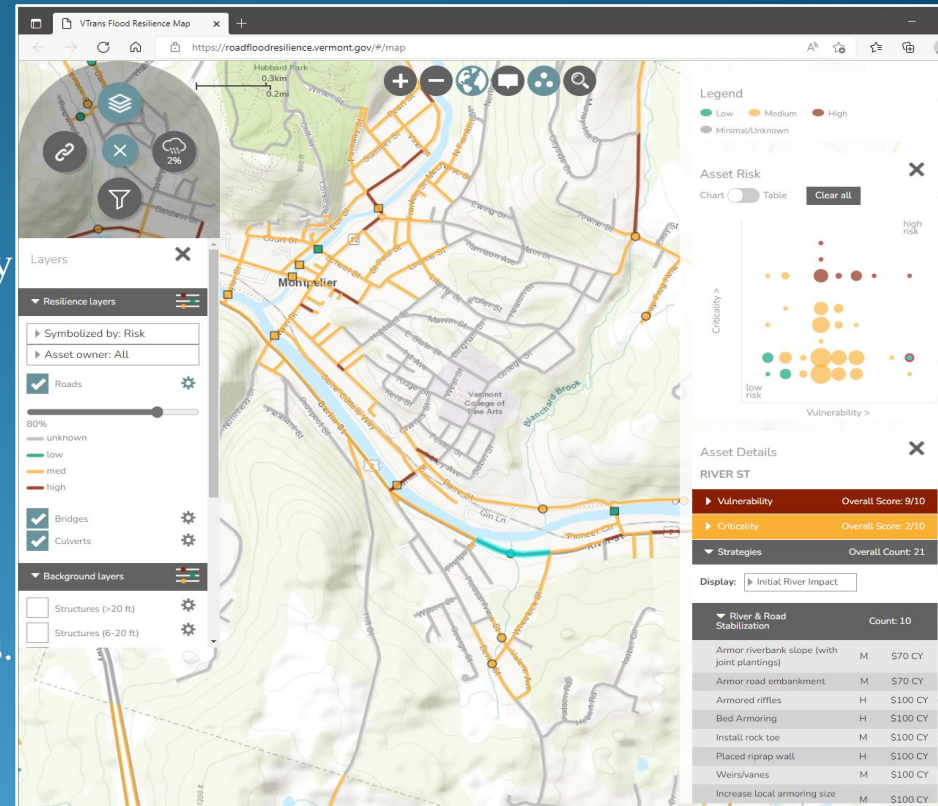
[Vermont Draft FAU Boundaries 2020 Census Map – Editable - https://arcg.is/110D8K](https://arcg.is/110D8K)

[Vermont Draft FAU Boundaries - 2020 Census - viewable](#)

Transportation Resilience Planning Tool (TRPT)

The Agency of Transportation (AOT) recently completed the final phase of work on the Transportation Resilience Planning Tool (TRPT). The TRPT is a web-based tool that aims to improve the resiliency of Vermont's roads, bridges, and culverts by assessing flood vulnerability, identifying critical locations on the transportation network, and determining damage mitigation strategies. The completion of this project is the culmination of a seven-year effort with the vital participation of many project partners including Regional Planning Commissions, State Agencies, and project consultants.

The TRPT is ready for use and will help inform project scoping, capital programming, and hazard mitigation planning for state and local highways. The AOT is hosting training sessions to roll-out the use of the TRPT to state and regional personnel throughout the next year.



[Link – TRPT Info](#)

[Link – TRPT web app](#)

Road Surface Type Verification

The screenshot shows the 'Road Surface Type Reviewer' web application. The interface includes a map of Mountain Rd with a red pin indicating a location. A search box at the top left contains the text 'MRGP 2018-20: Gravel road with open ditches'. Below the map is a bar chart showing the 'Count of Road Segments' for different surface types: Paved (approx. 65), Gravel (approx. 60), Soil or gra... (approx. 15), Unimproved/... (approx. 5), Impassable ... (approx. 5), and Unknown (approx. 1). The right side of the interface features a 'Surface Type Comment Menu' with options like 'Add feature' and 'Edit feature', and a 'Selected Road Details' section for 'TH-6 - MOUNTAIN RD: Gravel'.

Surface Type	Count of Road Segments
Paved	65
Gravel	60
Soil or gra...	15
Unimproved/...	5
Impassable ...	5
Unknown	1

Property	Value
Town	MONKTON
Road Name	MOUNTAIN RD
Route Number	TH-6
Road Class	Town Highway Class 3
Surface Type	Gravel
Functional Class	7
FAID	500010600281
County	ADDISON COUNTY
Admin District	DISTRICT 4
Regional Planning	ACRPC



The VTrans Road Centerline GIS data contains information about road surface types. This data is accurate for state-maintained highways, class 1 town highways and most class 2 town highways, as most are paved and have been reviewed. In order to improve the accuracy of road surface types for class 3 and class 4 town highways, the Agency of Transportation (AOT) Mapping Section has stood-up a Road Surface Type web app using ArcGIS Experience Builder. This app allows Regional Planning Commission staff to drop a “pin” on the map where the surface type might be incorrect and provide their notes on the location. The app also includes site photos from the Municipal Roads General Permit (MRGP) Road Erosion Inventory and VT Culverts to help inform the review process.

Part 667 Repeat Damage Analysis

Damage Data Records

VT13-1 - HARTFORD - D4-US4-74 (103)
(4) - MM 0.1 - Damage located at various sites, shoulder washouts, washed under guardrail, repair shoulders, and around culvert.

VT17-1 - HARTFORD - D4-US4-1 (118)
(4) - 4 sites, several slope failures due to the volume of heavy rain runoff, one pipe failure, and a collapsed headwall. Repair slope failures.

VT11-2 - HARTFORD - D4-US4-23 (202)
(US-4) - MM 3.7-4.6 125 ft of embankment, 75 ft of pavement damaged.

Repeat Damage Site Survey

Repeat Damage (Polygon)
Id: 176 - WOODSTOCK RD

Damage Event Count: Three Distinct Emergency Events
FHWA ER Events: VT11-2, VT13-1, VT17-1
Repeat Damage ID: 176
Damage Records ID: 103,118,202
Road Name: WOODSTOCK RD
Hwy Number: 4, US-4
Town(s): HARTFORD

Damage Event ...	FHWA ER Events	Repeat Damage...	Damage Recor...	District(s)	RPC(s)	Town(s)	County
Three Distinct Emergency ...	V111-1, V111-2, V120-1	174	1657,1709,2394	9	NVDA	IKASBURG	ORLEANS
Three Distinct Emergency ...	VT11-2, VT13-1, VT17-1	175	103,118,249	4	TRORC	HARTFORD	WINDSOR
Three Distinct Emergency ...	VT11-2, VT13-1, VT17-1	176	103,118,202	4	TRORC	HARTFORD	WINDSOR
Three Distinct Emergency ...	VT11-2, VT13-1, VT17-1	177	103,118,2722	4	TRORC	HARTFORD	WINDSOR
Three Distinct Emergency ...	VT11-2, VT13-1, VT17-1	178	103,118,1464	4	TRORC	HARTFORD	WINDSOR

REDUCING REPEAT DAMAGE OF VERMONT'S ROADS & STRUCTURES

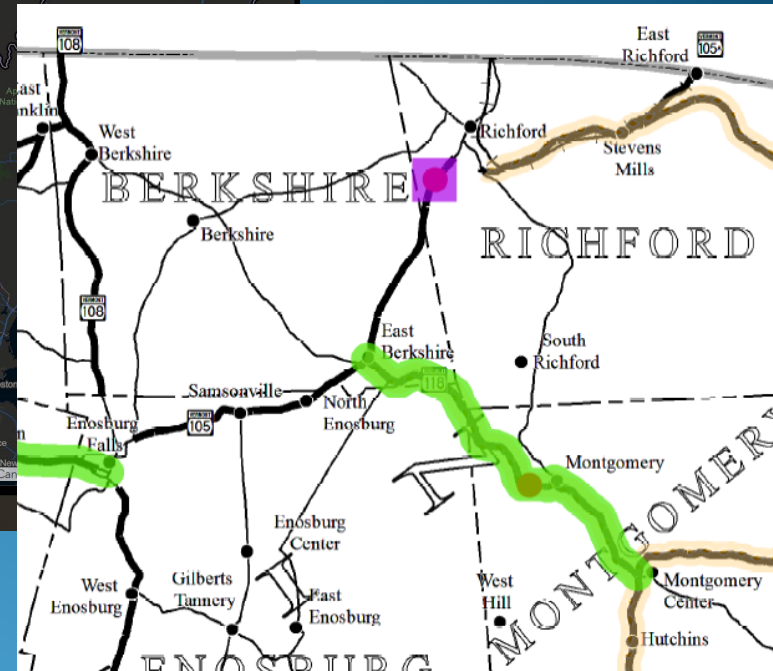
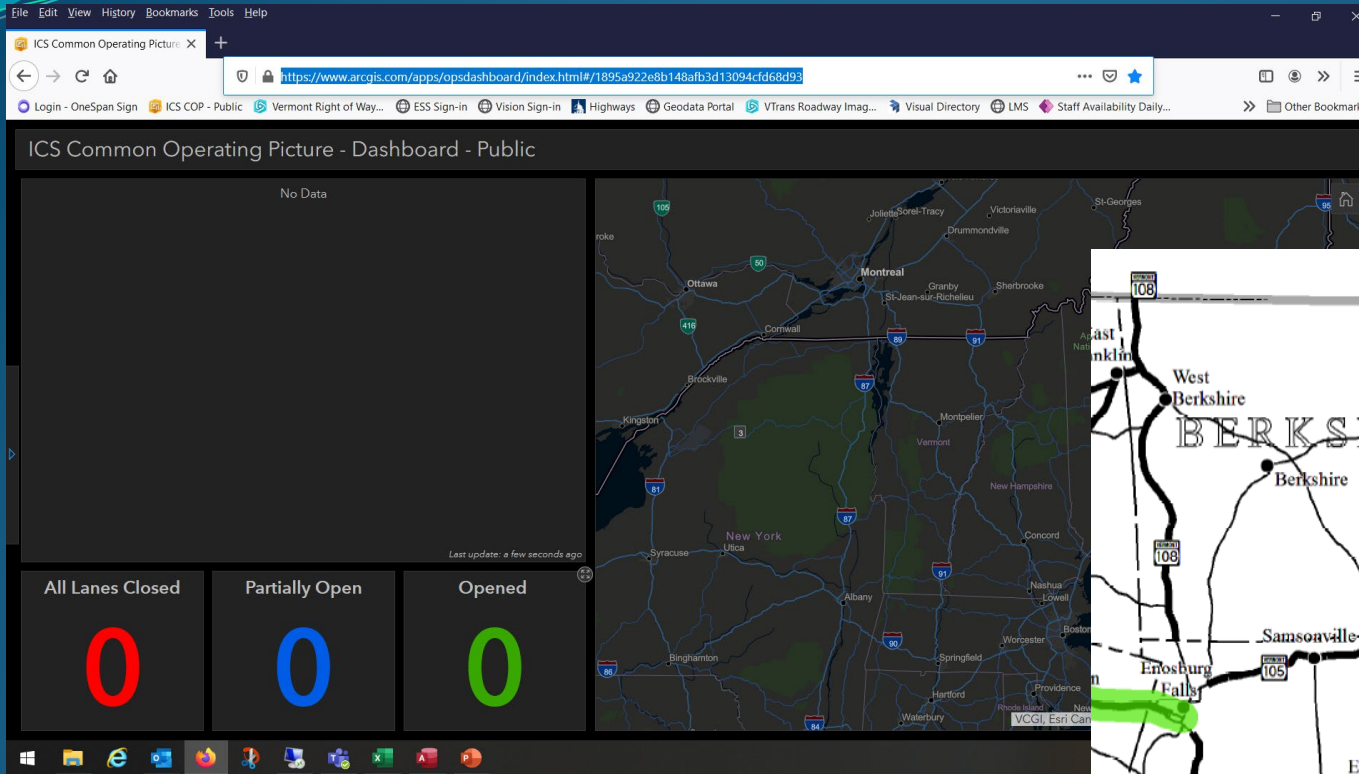
MAP-21 Part 667 (National Highway System)

Submitted to FHWA November 19, 2018
Minor revisions December 13, 2019

VERMONT AGENCY OF TRANSPORTATION

To assist Planning staff with FHWA Part 667 reporting, Mapping developed the Reducing Repeat Damage Tool. This web app enables state and local agencies to analyze and provide insight on Federal Aid System roads and structures that have sustained damage from multiple weather-related disasters.

ICS Common Operating Picture (COP)



Mapping support provided as part of the GIS Team for ICS during emergency response. This is collaborative with GIS staff from Rail, Asset Management and Operations.

<https://www.arcgis.com/apps/opsdashboard/index.html#/1895a922e8b148afb3d13094cfd68d93>

Model Inventory of Roadway Elements (MIRE)



The Mapping Section oversees the development of the MIRE Fundamental Data Elements (FDEs) to meet FHWA requirements for data to support safety and other programs.

Some of the MIRE data elements are maintained by Mapping, such as road width, intersections, but others are pulled from across the Agency.

Town Highway Map Archive

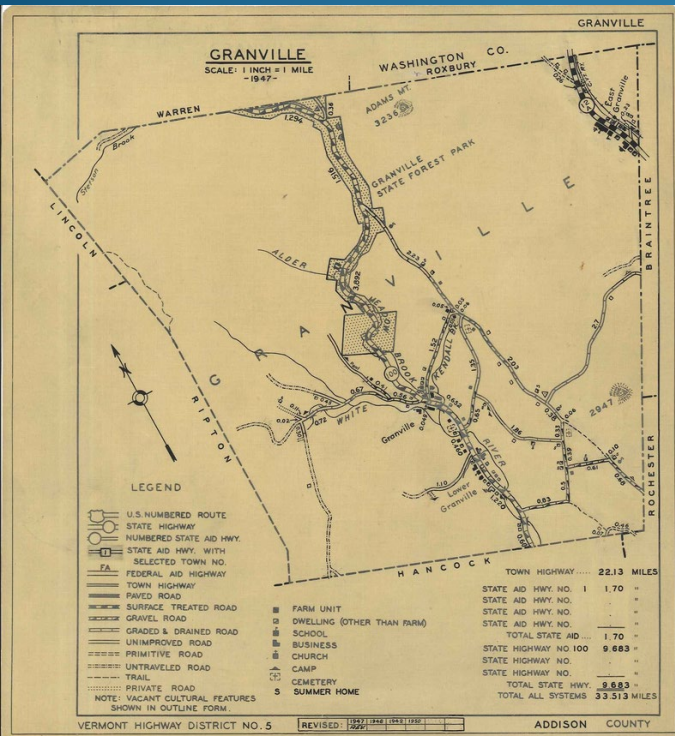
MAP ARCHIVE

The Agency has scanned the maps in the Vermont Agency of Transportation Mapping Section's map files, and has posted them online. If you are unable to directly open a file by clicking on it, right-click on it, download it to your computer, and then open it with the appropriate software. Many of the images are in TIF format and can be opened using picture-viewing software. The PDF files can be opened using [Acrobat Reader](#).

The link below leads to the maps and publications the Mapping Section has online, including several vintages of the County-Town maps, State maps, plus various publications.

[HTML Directory Interface for Scanned Maps](#)

The Mapping Section maintains a Map Archive of Town Highway Maps from 1931 to the present and makes them accessible online.

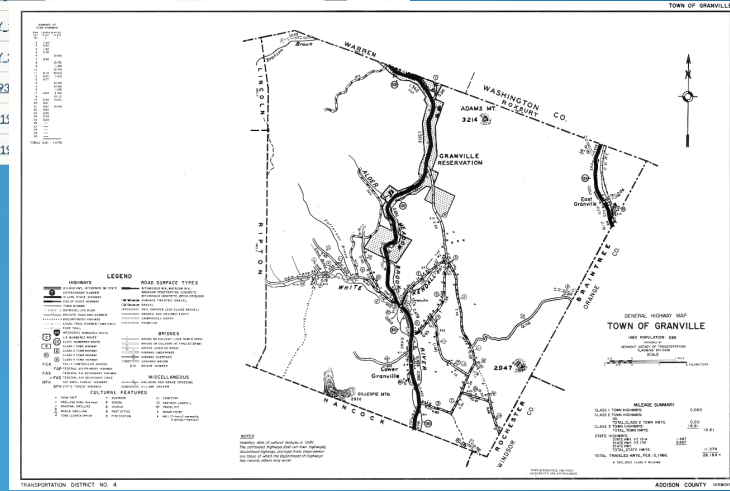


Current Maps Only

Select a County
GRANVILLE

Select a Year

MAP NAME	FILE SIZE(MB)	META DATA
GRANVILLE_1931.pdf	1.33	view
GRANVILLE_1931.tif	1.97	view
GRANVILLE_1941.jpg	0.36	view
GRANVILLE_INVENTORY_1971.tif	2.43	view
GRANVILLE_INVENTORY_...		
GRANVILLE_INVENTORY_...		
GRANVILLE_MILEAGE_193		
GRANVILLE_MILEAGE_15		
GRANVILLE_MILEAGE_15		



Aerial Photography Archive



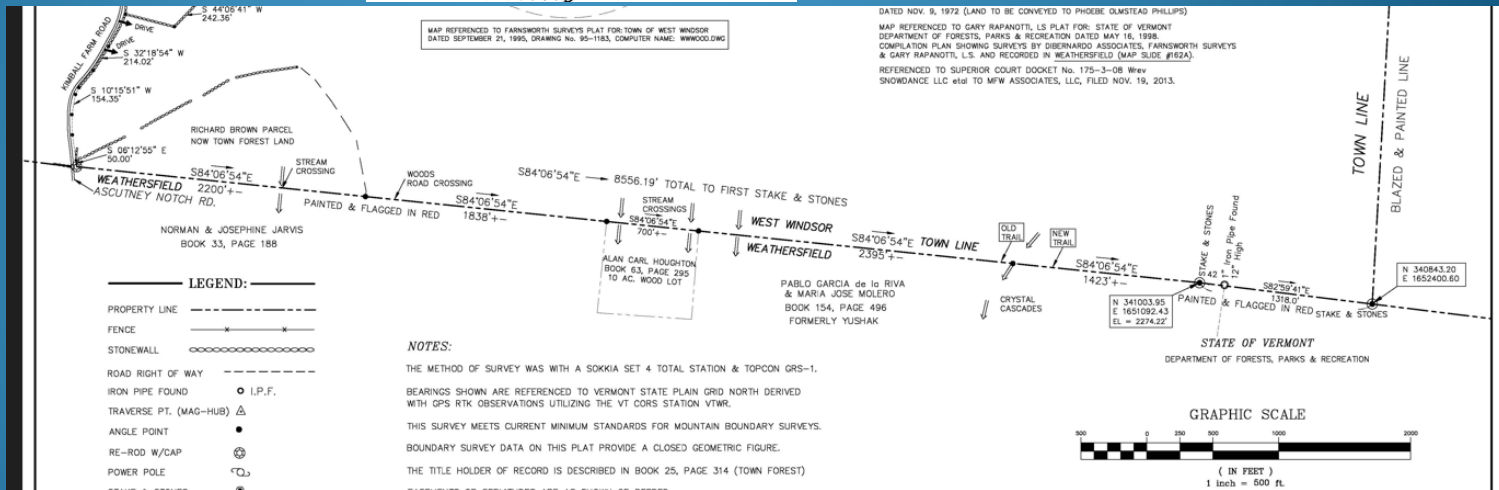
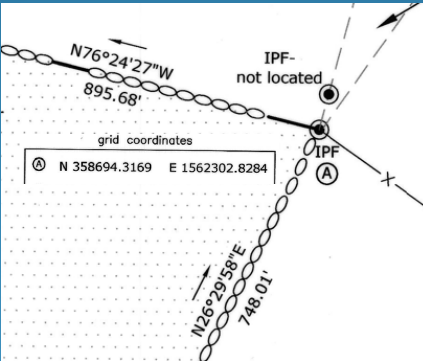
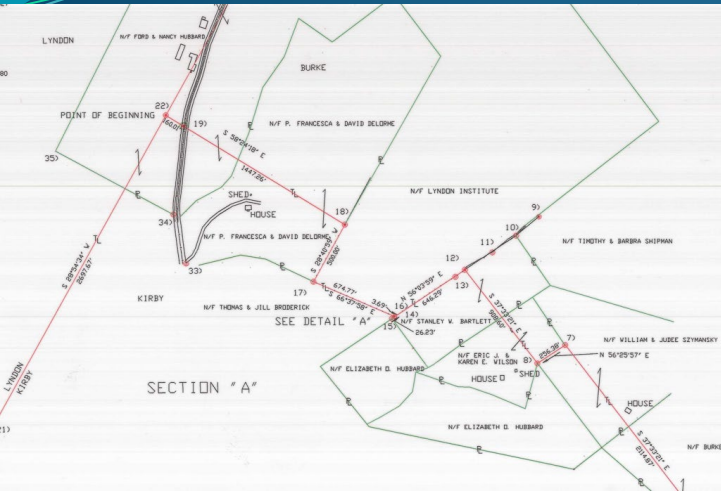
Mapping has an archive of aerial photography and has worked to scan the 1962 high and low images. The catalog includes highway corridors for projects from the 1950's to 1980's.



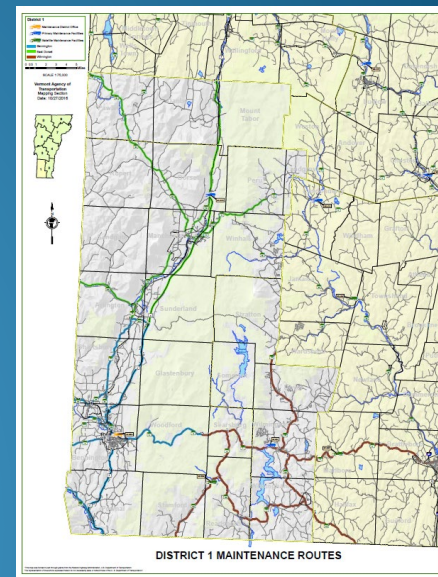
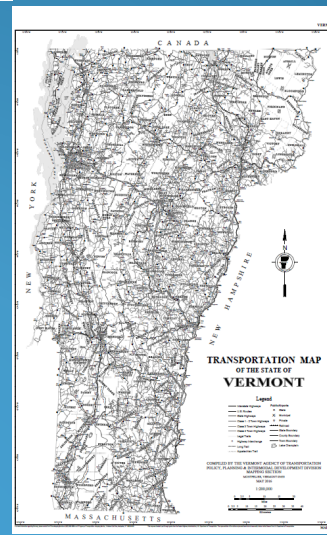
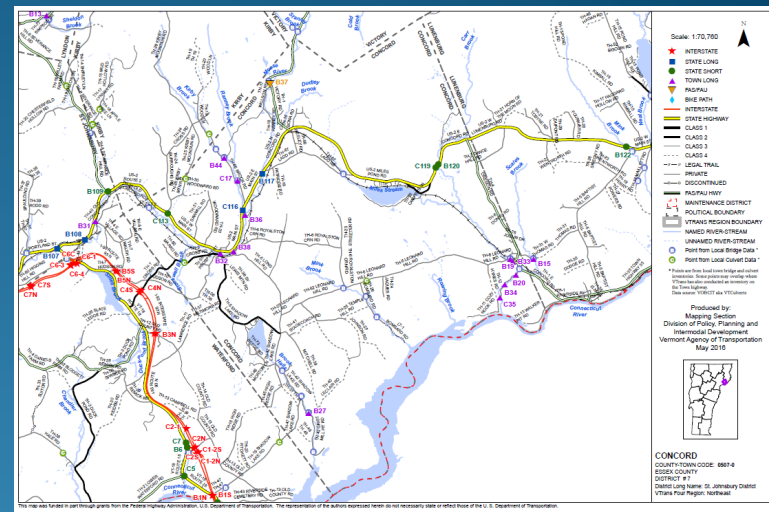
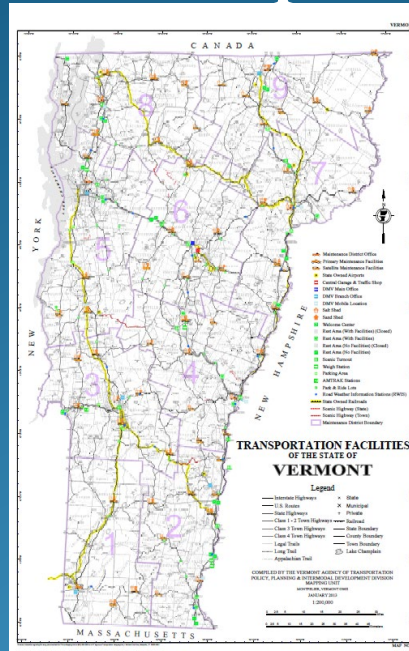
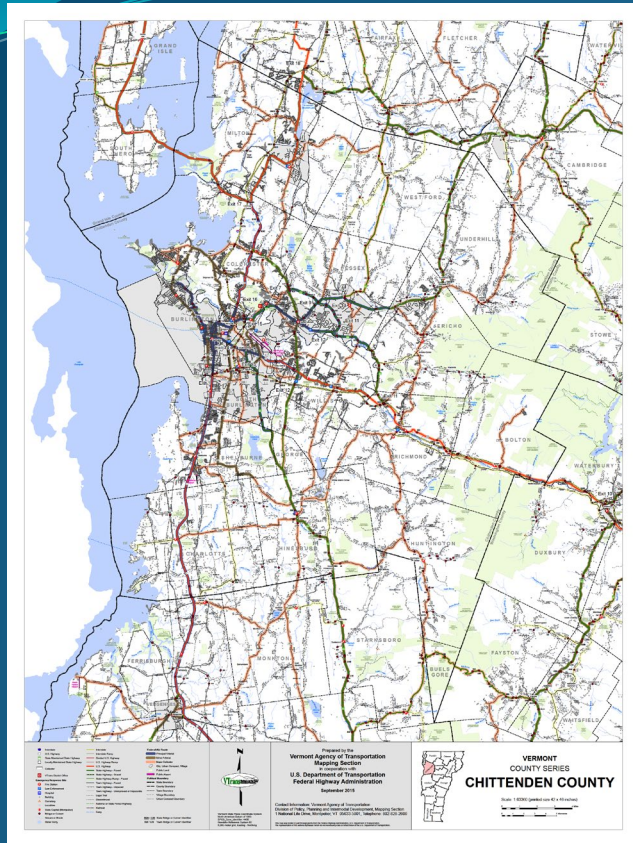
[1962 High Altitude Aerial Photos](#)
[1962 Low Altitude Aerial Photos](#)

Town Boundaries

To better map highway mileage, accurate town boundaries are important. Mapping continues to work in partnership with VCGI, E911, ANR, and others to improve the boundary using the surveys and the best available information.



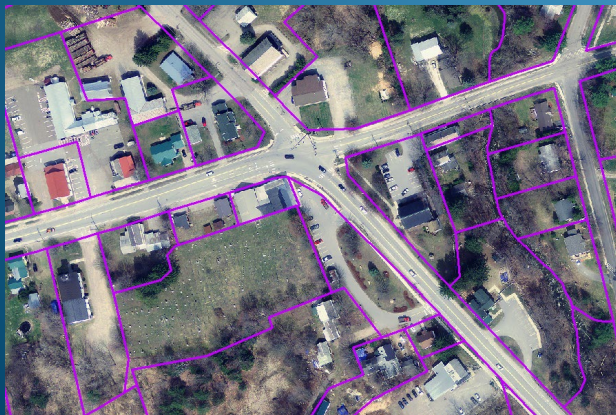
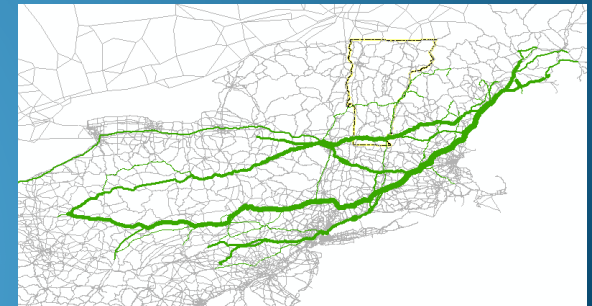
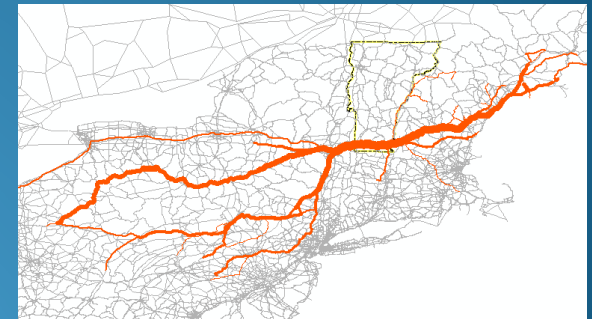
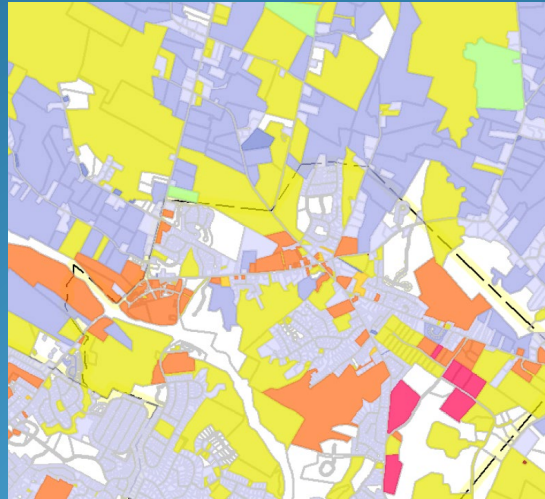
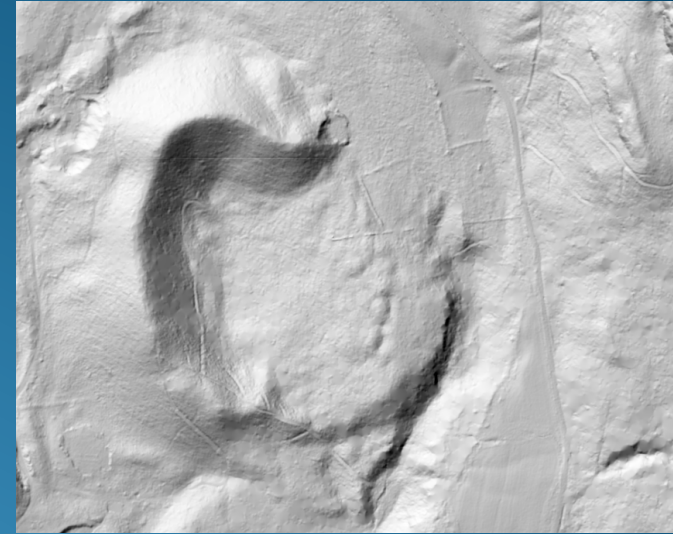
Standard Map Production



Mapping produces a series of standard maps that are available on-line, including the Town & County Map Series, Bridge Inspection Maps, State Highway Map, District Map, and more.

Additional Mapping Related Projects

Mapping has worked on the statewide acquisition of lidar data, statewide property parcel mapping project, development of intersection data for use in safety analysis, and other projects to support VTrans and the State.



Land Use By Parcel	
Residential-1	Commercial Apt
Residential-2	Commercial
Mobile Home/landed	Industrial
Mobile Home/un-landed	Utilities Electric
Seasonal-1	Utilities Other
Seasonal-2	Woodland
Farm	Other
	Miscellaneous
	Parcels not linked to the Grand List

Resources & Feature Services

LRS – End to End linear reference method (LRM) – <https://maps.vtrans.vermont.gov/arcgis/rest/services/Layers/LRS/FeatureServer/0>

LRS – Town-based LRM – <https://maps.vtrans.vermont.gov/arcgis/rest/services/Layers/LRS/FeatureServer/1>

All Roads Network Of Linear-referenced Data (ARNOLD) – <https://maps.vtrans.vermont.gov/arcgis/rest/services/Master/vtrans/FeatureServer/15>

VTrans Road Centerlines - <https://maps.vtrans.vermont.gov/arcgis/rest/services/Master/vtrans/FeatureServer/3>

Intersection Nodes – <https://maps.vtrans.vermont.gov/arcgis/rest/services/Master/vtrans/FeatureServer/18>

Intersection Node Legs - <https://maps.vtrans.vermont.gov/arcgis/rest/services/Master/vtrans/FeatureServer/17>

Bridges - <https://maps.vtrans.vermont.gov/arcgis/rest/services/Layers/Bridges/FeatureServer>

Mileposts - <https://maps.vtrans.vermont.gov/arcgis/rest/services/Layers/MilePoints/MapServer>

Guardrail - <https://maps.vtrans.vermont.gov/arcgis/rest/services/Master/AMP/FeatureServer/15>

Road Widths - <https://maps.vtrans.vermont.gov/arcgis/rest/services/Master/vtrans/FeatureServer/22>

Functional Class - <https://maps.vtrans.vermont.gov/arcgis/rest/services/Master/General/FeatureServer/19>

Speed Zones - <https://maps.vtrans.vermont.gov/arcgis/rest/services/Master/VTrans2/FeatureServer/31>

Speed Limits - <https://maps.vtrans.vermont.gov/arcgis/rest/services/Master/VTrans2/FeatureServer/32>

Right of Way Spatial Data Hub - <https://vtrans.maps.arcgis.com/apps/webappviewer/index.html?id=b419eb6a5e4541cfb4445e7de7a0749f>

VTrans Engineering Image Archives - <https://maps.vtrans.vermont.gov/rp/dpr/>

VTransparency – Public Information Portal - <https://vtransparency.vermont.gov/>

VTrans Mapping Section - <https://vtrans.vermont.gov/planning/maps>

Questions???

Johnathan Croft

Johnathan.Croft@vermont.gov
(802) 828-2600

Michael Trunzo

Michael.Trunzo@vermont.gov

Kerry Alley

Kerry.Alley@vermont.gov
(802) 828-3666

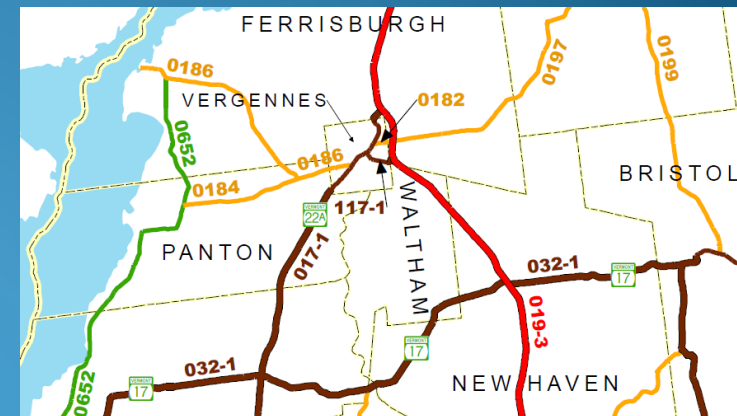
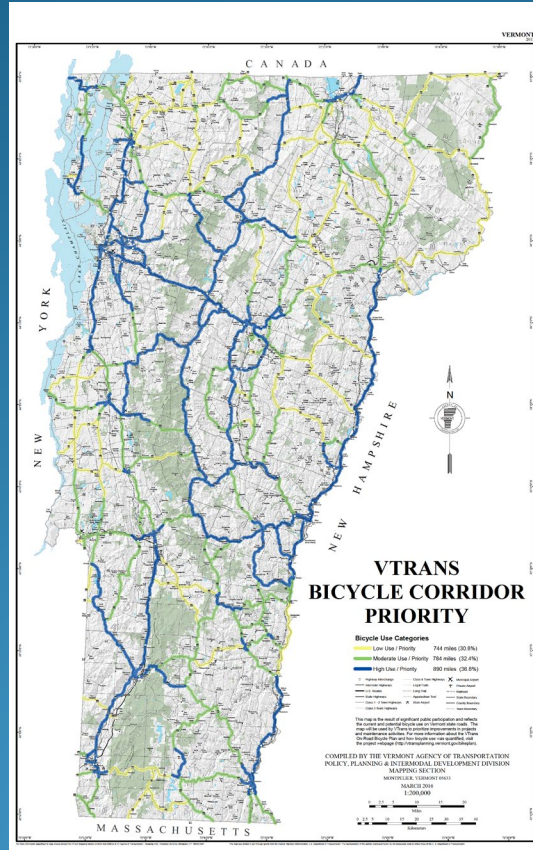
James Blouin

James.Blouin@vermont.gov

Pam DeAndrea

Pam.DeAndrea@vermont.gov

VT Agency of Transportation
Policy, Planning & Intermodal
Development Division -
Mapping Section



More details available on-line at the Mapping Section's web pages at -
<https://vtrans.vermont.gov/planning/maps>