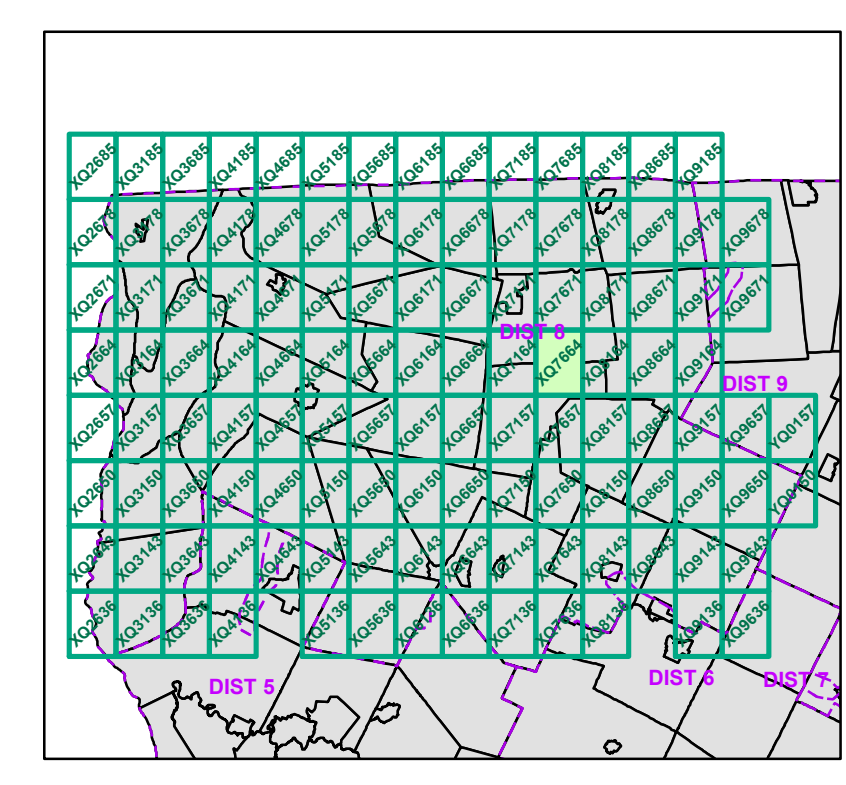


- Interstate
 - Interstate Ramp
 - Divided U.S. Highway
 - U.S. Highway Ramp
 - U.S. Highway
 - State Highway - Paved
 - State Highway - Gravel
 - State Highway Ramp - Paved
 - Class 1 - Paved
 - Class 2 - Paved
 - Class 2 - Gravel
 - Class 2 - Graded Earth
 - Class 3 - Paved
 - Class 3 - Gravel
 - Class 3 - Graded Earth
 - Class 3 - Unimproved / Primitve
 - Class 4 - Paved
 - Class 4 - Gravel
 - Class 4 - Graded Earth
 - Class 4 - Unimproved / Primitve
 - Class 4 - Impassable or Untraveled
 - National or State Forest Highway
 - Legal Trail
 - Unconfirmed Legal Trail
 - Private
 - Discontinued
 - Proposed Highway
- Functional Class**
- Principal Arterial - Rural
 - Minor Arterial - Rural
 - Major Collector - Rural
 - Minor Collector - Rural
 - Federal Aid Urban
- Bridge-Culvert**
- Bridge or Culvert Greater than 20'
 - Bridge or Culvert 6' - 20'
 - Archived Town Short Data
- Railroad**
- Railroad
 - Inactive Railroad - Rail Trail
 - Buildings/Structures (E911)
 - Airport
 - Named Lake-Pond
 - Unnamed Lake-Pond
 - Named River-Stream
 - Unnamed River-Stream
 - Public Land
 - USNGbased_grid_districts
 - District (including extension)
 - Town Boundary
- 2.2 Distance along linear referenced highway (route log measure)**
- B20 / C20 State Bridge or Culvert Identifier
 - B20 / C20 Town Bridge or Culvert Identifier

1,000 meter US National Grid
 North American Datum 1983
 Grid Zone Designation: 18T

Vermont State Plane Coordinate System
 North American Datum of 1983
 SPCS_Zone_Identifier: 4400
 Geodetic Reference System 80
 500-meter grid, Easting - Northing



FIELD ASSESSMENT MAP SERIES
 (Tropical Storm Irene)

District: 8

USNG Page #: 18TXQ7664
 Sheet ID: XQ7664

TOWNS INCLUDED ON SHEET
 Bakersfield
 Belvidere
 Enosburg

Contact information:
 Vermont Agency of Transportation, Mapping Unit
 1 National Life Drive, Montpelier, VT 05633-5001
 Telephone: 802-828-2600

This map was funded in part through grants from the Federal Highway Administration, U.S. Department of Transportation. The representation of the authors expressed herein do not necessarily state or reflect those of the U.S. Department of Transportation.