

- | | |
|--|--|
| <ul style="list-style-type: none"> Interstate Interstate Ramp Divided U.S. Highway U.S. Highway Ramp U.S. Highway State Highway - Paved State Highway - Gravel State Highway Ramp - Paved Class 1 - Paved Class 2 - Paved Class 2 - Gravel Class 2 - Graded Earth Class 3 - Paved Class 3 - Gravel Class 3 - Graded Earth Class 3 - Unimproved / Primitive Class 4 - Paved Class 4 - Gravel Class 4 - Graded Earth Class 4 - Unimproved / Primitive Class 4 - Impassable or Untraveled National or State Forest Highway Legal Trail Unconfirmed Legal Trail Private Discontinued Proposed Highway | <p>Functional Class</p> <ul style="list-style-type: none"> Principal Arterial - Rural Minor Arterial - Rural Major Collector - Rural Minor Collector - Rural Federal Aid Urban <p>Bridge-Culvert</p> <ul style="list-style-type: none"> Bridge or Culvert Greater than 20' Bridge or Culvert 6' - 20' Archived Town Short Data <p>Railroad</p> <ul style="list-style-type: none"> Railroad Inactive Railroad - Rail Trail Buildings/Structures (E911) Airport Named Lake-Pond Unnamed Lake-Pond Named River-Stream Unnamed River-Stream Public Land <p>USNGbased_grid_districts</p> <ul style="list-style-type: none"> District (including extension) Town Boundary |
|--|--|

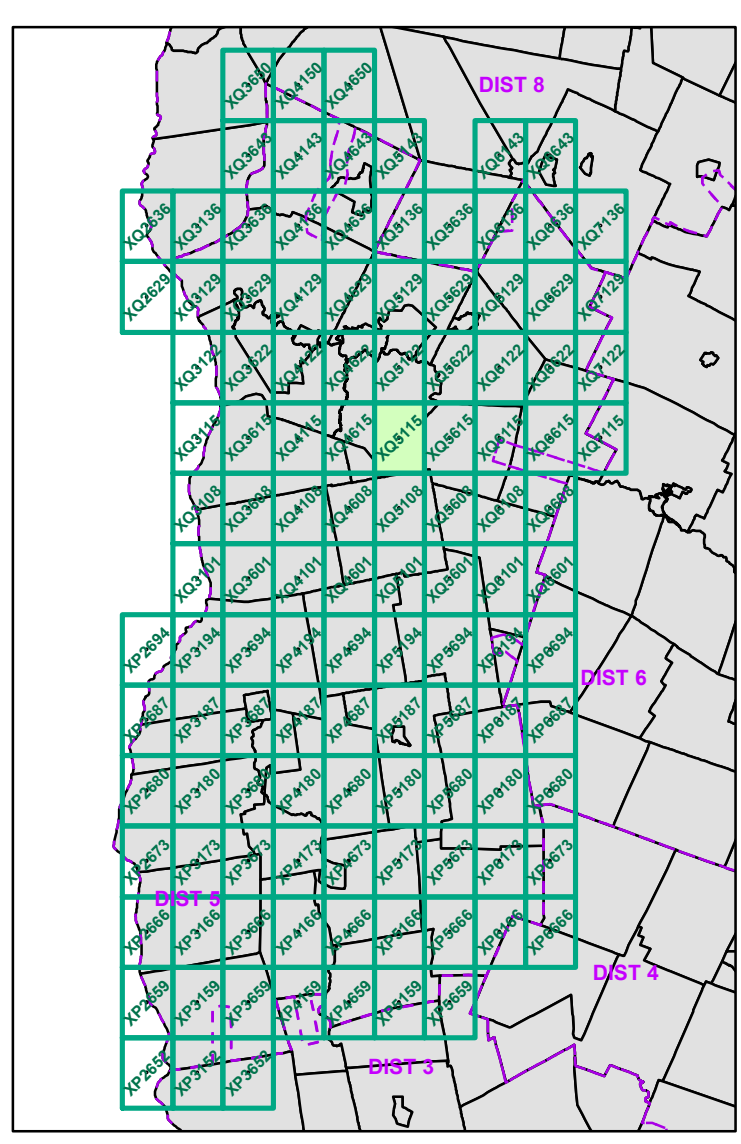
1,000 meter US National Grid
 North American Datum 1983
 Grid Zone Designation: 18T

Vermont State Plane Coordinate System
 North American Datum of 1983
 SPCS Zone Identifier: 4400
 Geodetic Reference System 80
 500-meter grid, Easting - Northing

2.2 Distance along linear referenced highway (route log measure)

B20 / C20 State Bridge or Culvert Identifier

B20 / C20 Town Bridge or Culvert Identifier



0 0.2 0.4
 Miles

Scale: 1:12,672
 (printed size: 24 x 36 inches)

FIELD ASSESSMENT MAP SERIES
 (Tropical Storm Irene)

District: 5

USNG Page #: 18TXQ5115
 Sheet ID: XQ5115

TOWNS INCLUDED ON SHEET
 Hinesburg
 Richmond
 St. George
 Williston

Contact information:
 Vermont Agency of Transportation, Mapping Unit
 1 National Life Drive, Montpelier, VT 05633-5001
 Telephone: 802-828-2600

This map was funded in part through grants from the Federal Highway Administration, U.S. Department of Transportation. The representation of the authors expressed herein do not necessarily state or reflect those of the U.S. Department of Transportation.