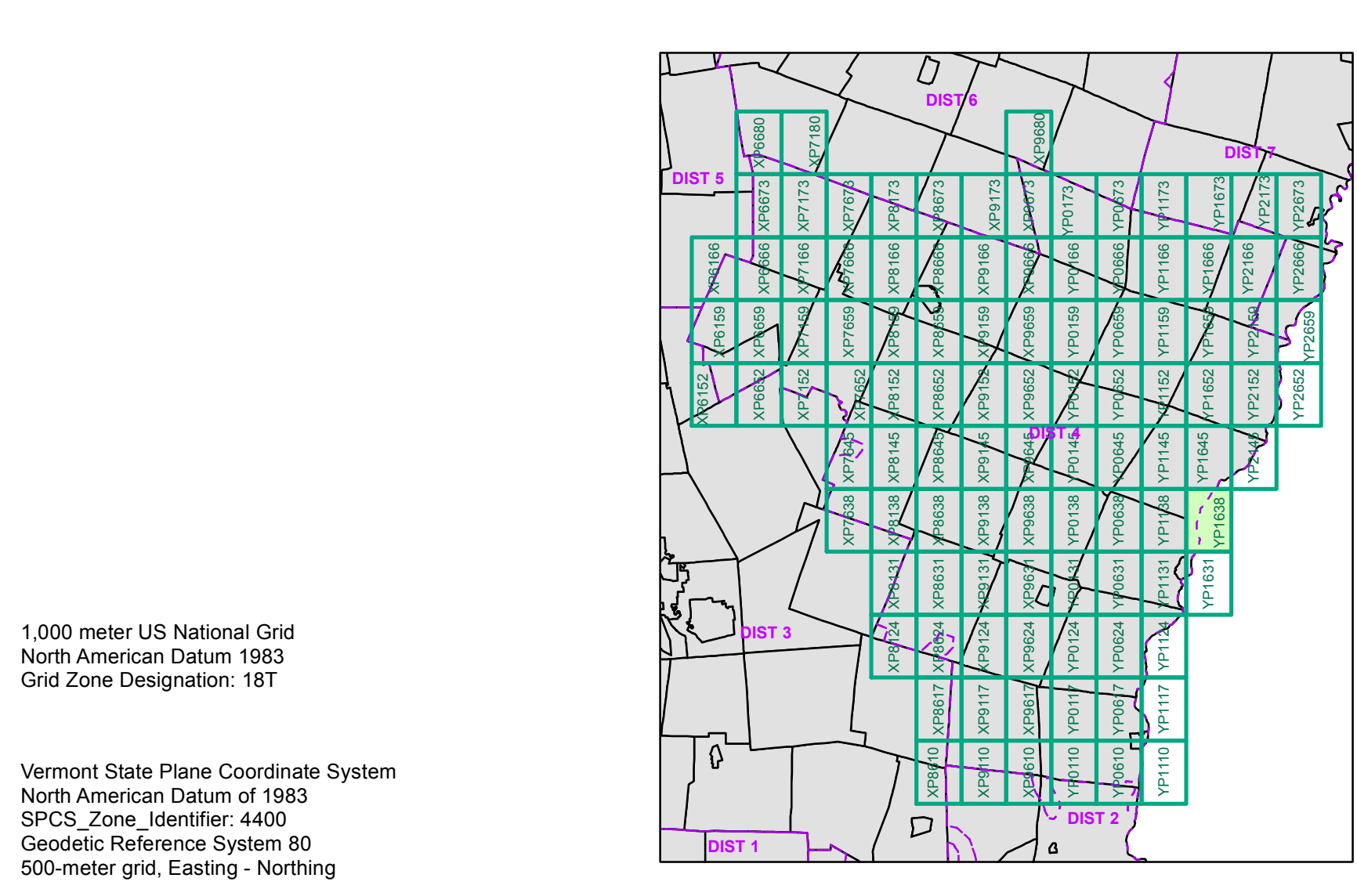


- |   |   |   |
|---|---|---|
| <ul style="list-style-type: none"> <li><span style="color: green;">—</span> Interstate</li> <li><span style="color: red;">—</span> Interstate Ramp</li> <li><span style="color: blue;">—</span> Divided U.S. Highway</li> <li><span style="color: orange;">—</span> U.S. Highway Ramp</li> <li><span style="color: yellow;">—</span> U.S. Highway</li> <li><span style="color: purple;">—</span> State Highway - Paved</li> <li><span style="color: brown;">—</span> State Highway - Gravel</li> <li><span style="color: pink;">—</span> State Highway Ramp - Paved</li> <li><span style="color: grey;">—</span> Class 1 - Paved</li> <li><span style="color: lightgrey;">—</span> Class 2 - Paved</li> <li><span style="color: lightgrey;">—</span> Class 2 - Gravel</li> <li><span style="color: lightgrey;">—</span> Class 2 - Graded Earth</li> <li><span style="color: lightgrey;">—</span> Class 3 - Paved</li> <li><span style="color: lightgrey;">—</span> Class 3 - Gravel</li> <li><span style="color: lightgrey;">—</span> Class 3 - Graded Earth</li> <li><span style="color: lightgrey;">—</span> Class 3 - Unimproved / Primitive</li> <li><span style="color: lightgrey;">—</span> Class 4 - Paved</li> <li><span style="color: lightgrey;">—</span> Class 4 - Gravel</li> <li><span style="color: lightgrey;">—</span> Class 4 - Graded Earth</li> <li><span style="color: lightgrey;">—</span> Class 4 - Unimproved / Primitive</li> <li><span style="color: lightgrey;">—</span> Class 4 - Impassable or Untraveled</li> <li><span style="color: lightgrey;">—</span> National or State Forest Highway</li> <li><span style="color: lightgrey;">—</span> Legal Trail</li> <li><span style="color: lightgrey;">—</span> Unconfirmed Legal Trail</li> <li><span style="color: lightgrey;">—</span> Private</li> <li><span style="color: lightgrey;">—</span> Discontinued</li> <li><span style="color: lightgrey;">—</span> Proposed Highway</li> </ul> | <p><b>Functional Class</b></p> <ul style="list-style-type: none"> <li><span style="color: green;">—</span> Principal Arterial - Rural</li> <li><span style="color: yellow;">—</span> Minor Arterial - Rural</li> <li><span style="color: orange;">—</span> Major Collector - Rural</li> <li><span style="color: purple;">—</span> Minor Collector - Rural</li> <li><span style="color: brown;">—</span> Federal Aid Urban</li> </ul> <p><b>Bridge-Culvert</b></p> <ul style="list-style-type: none"> <li><span style="color: grey;">■</span> Bridge or Culvert Greater than 20'</li> <li><span style="color: grey;">●</span> Bridge or Culvert 6' - 20'</li> <li><span style="color: grey;">○</span> Archived Town Short Data</li> </ul> <p><b>Railroad</b></p> <ul style="list-style-type: none"> <li><span style="color: grey;">—</span> Railroad</li> <li><span style="color: grey;">—</span> Inactive Railroad - Rail Trail</li> <li><span style="color: grey;">—</span> Buildings/Structures (E911)</li> <li><span style="color: grey;">—</span> Airport</li> <li><span style="color: grey;">—</span> Named Lake-Pond</li> <li><span style="color: grey;">—</span> Unnamed Lake-Pond</li> <li><span style="color: grey;">—</span> Named River-Stream</li> <li><span style="color: grey;">—</span> Unnamed River-Stream</li> <li><span style="color: grey;">—</span> Public Land</li> <li><span style="color: grey;">—</span> USNGbased_grid_districts</li> <li><span style="color: grey;">—</span> District (including extension)</li> <li><span style="color: grey;">—</span> Town Boundary</li> </ul> <p><b>2.2 Distance along linear referenced highway (route log measure)</b></p> <ul style="list-style-type: none"> <li><span style="color: red;">—</span> B20 / C20 State Bridge or Culvert Identifier</li> <li><span style="color: red;">—</span> B20 / C20 Town Bridge or Culvert Identifier</li> </ul> | <p>1,000 meter US National Grid<br/>North American Datum 1983<br/>SPCS_Zone_Identifier: 4400<br/>Geodetic Reference System 80<br/>500-meter grid, Easting - Northing</p> <p>Vermont State Plane Coordinate System<br/>North American Datum of 1983<br/>SPCS_Zone_Identifier: 4400<br/>Geodetic Reference System 80<br/>500-meter grid, Easting - Northing</p> |
|---|---|---|



0 0.2 0.4  
Miles

Scale 1:12,672  
(printed size: 24 x 36 inches)

**FIELD ASSESSMENT MAP SERIES**  
(Tropical Storm Irene)

District:  
**USNG Page #: 18TYP1638**  
**Sheet ID: YP1638**

**TOWNS INCLUDED ON SHEET**  
Hartford  
Norwich  
White River Jct. Urban Compact  
Wilder Urban Compact

Contact information:  
Vermont Agency of Transportation, Mapping Unit  
1 National Life Drive, Montpelier, VT 05633-5001  
Telephone: 802-828-2600

This map was funded in part through grants from the Federal Highway Administration, U.S. Department of Transportation. The representation of the authors expressed herein do not necessarily state or reflect those of the U.S. Department of Transportation.