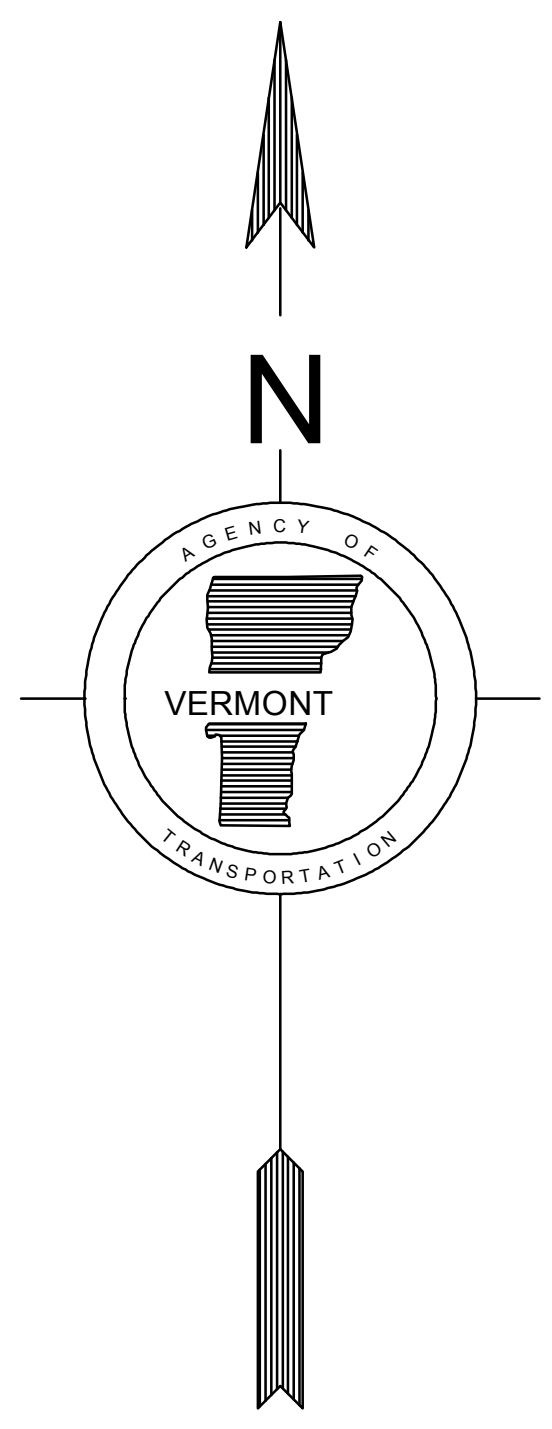
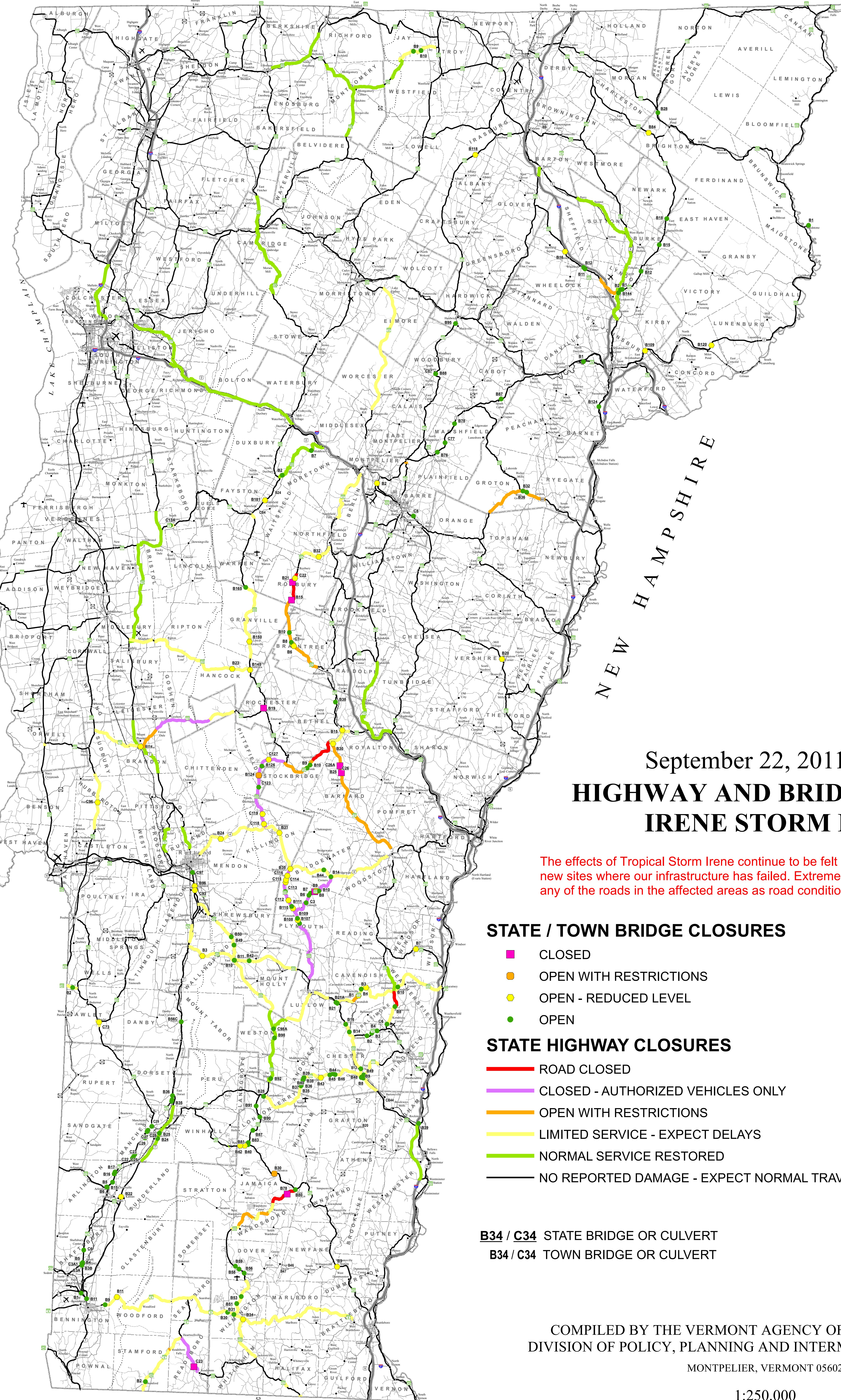


73°30'0"W 73°15'0"W 73°0'0"W 72°45'0"W 72°30'0"W 72°15'0"W 72°0'0"W 71°45'0"W 71°30'0"W 71°15'0"W 71°0'0"W

CANADA



# September 22, 2011 - 11:25 AM HIGHWAY AND BRIDGE CLOSURES IRENE STORM DAMAGE

The effects of Tropical Storm Irene continue to be felt around Vermont. Daily there are new sites where our infrastructure has failed. Extreme caution must be used in travelling any of the roads in the affected areas as road conditions continue to change.

### STATE / TOWN BRIDGE CLOSURES

- CLOSED
- OPEN WITH RESTRICTIONS
- OPEN - REDUCED LEVEL
- OPEN

### STATE HIGHWAY CLOSURES

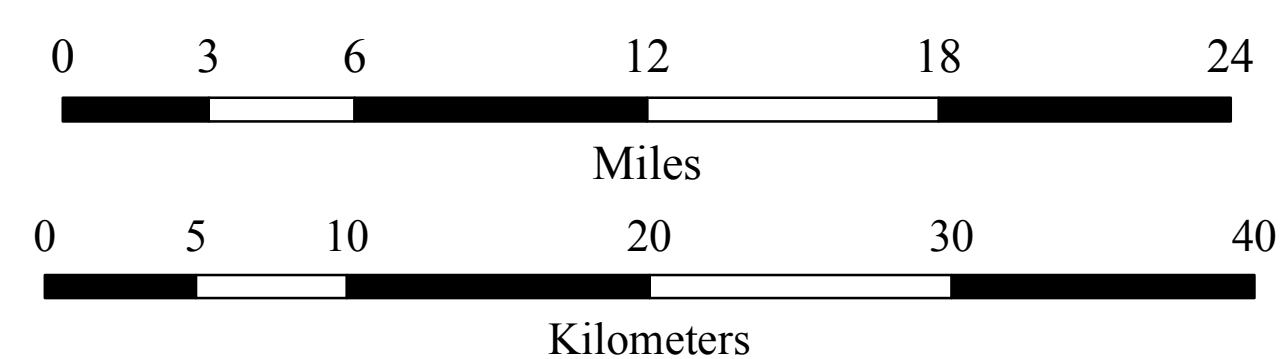
- ROAD CLOSED
- CLOSED - AUTHORIZED VEHICLES ONLY
- OPEN WITH RESTRICTIONS
- LIMITED SERVICE - EXPECT DELAYS
- NORMAL SERVICE RESTORED
- NO REPORTED DAMAGE - EXPECT NORMAL TRAVEL

**B34 / C34** STATE BRIDGE OR CULVERT  
**B34 / C34** TOWN BRIDGE OR CULVERT

- × Public Airports
  - × State
  - × Municipal
  - ± Private
- Interstate Highways
- U.S. Routes
- State Highways
- Class 1 - 2 Town Highways
- Class 3 Town Highways
- Class 4 Town Highways
- Legal Trails
- ..... Long Trail
- ..... Appalachian Trail
- Railroad
- State Boundary
- County Boundary
- Town Boundary

COMPILED BY THE VERMONT AGENCY OF TRANSPORTATION  
DIVISION OF POLICY, PLANNING AND INTERMODAL DEVELOPMENT  
MONTPELIER, VERMONT 05602

1:250,000



73°30'0"W 73°15'0"W 73°0'0"W 72°45'0"W 72°30'0"W 72°15'0"W 72°0'0"W 71°45'0"W 71°30'0"W 71°15'0"W 71°0'0"W

For more information regarding this map, please contact the VT Maps Mapping Unit at (802) 828-2800 or at VT Agency of Transportation - Mapping Unit, 1 National Life Drive, Montpelier, VT 05633-3001

This map was funded in part through grants from the Federal Highway Administration, U.S. Department of Transportation. The representation of the authors expressed herein do not necessarily state or reflect those of the U.S. Department of Transportation.