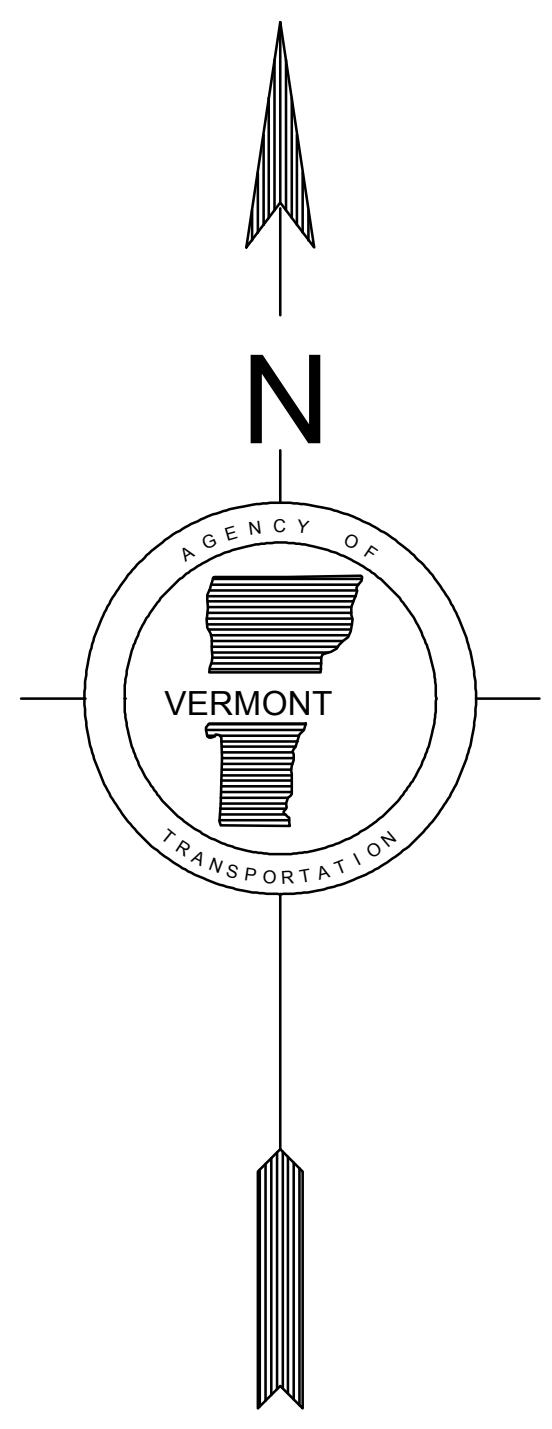
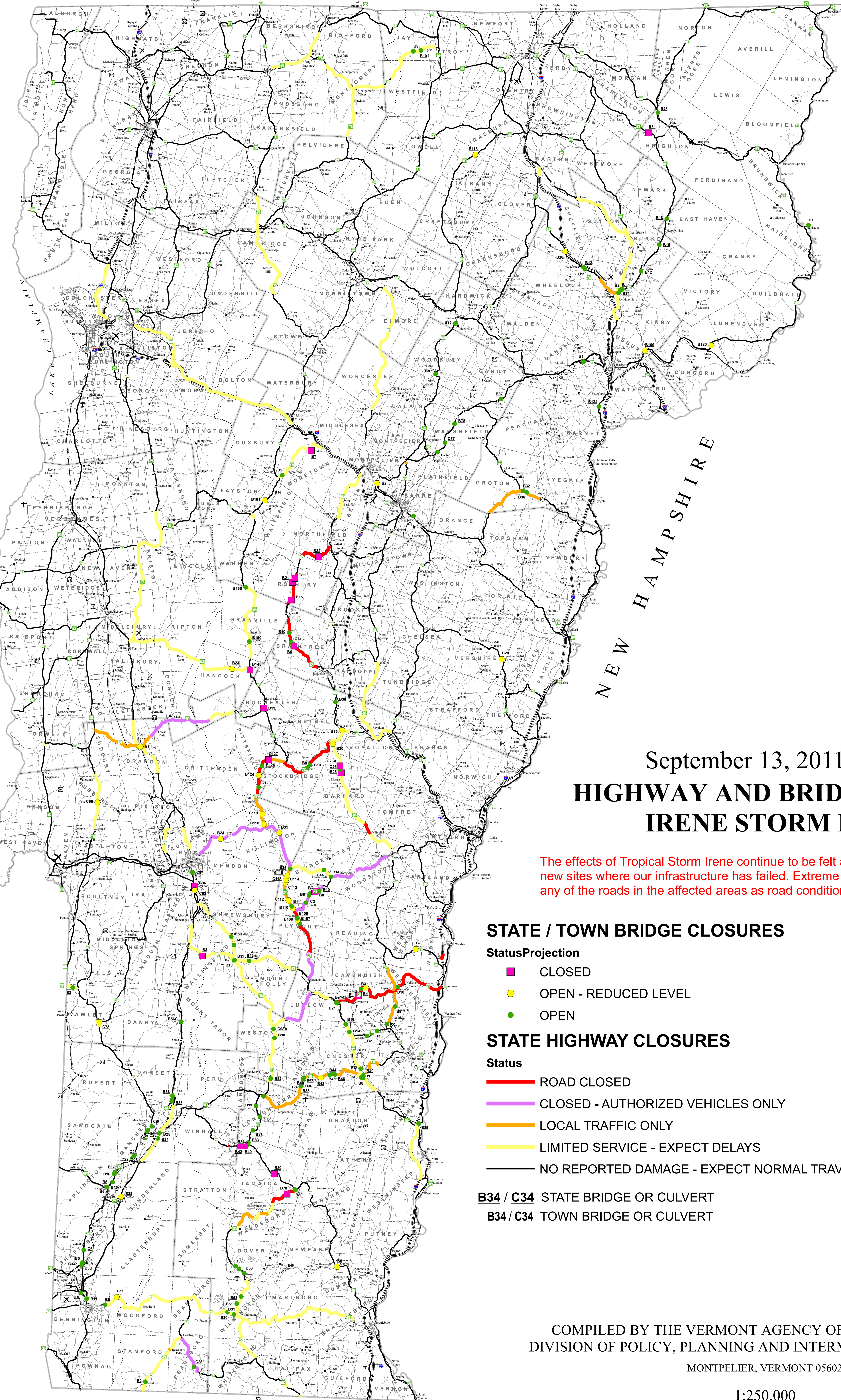


73°30'0"W 73°15'0"W 73°0'0"W 72°45'0"W 72°30'0"W 72°15'0"W 72°0'0"W 71°45'0"W 71°30'0"W 71°15'0"W 71°0'0"W

CANADA



September 13, 2011 - 4:47 PM HIGHWAY AND BRIDGE CLOSURES IRENE STORM DAMAGE

The effects of Tropical Storm Irene continue to be felt around Vermont. Daily there are new sites where our infrastructure has failed. Extreme caution must be used in travelling any of the roads in the affected areas as road conditions continue to change.

STATE / TOWN BRIDGE CLOSURES

- StatusProjection
- CLOSED
 - OPEN - REDUCED LEVEL
 - OPEN

STATE HIGHWAY CLOSURES

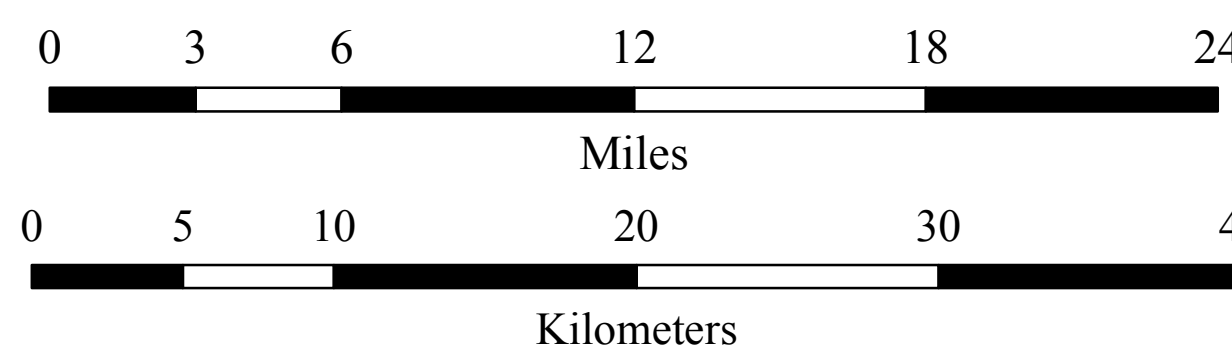
- Status
- ROAD CLOSED
 - CLOSED - AUTHORIZED VEHICLES ONLY
 - LOCAL TRAFFIC ONLY
 - LIMITED SERVICE - EXPECT DELAYS
 - NO REPORTED DAMAGE - EXPECT NORMAL TRAVEL

B34 / C34 STATE BRIDGE OR CULVERT
B3 / C34 TOWN BRIDGE OR CULVERT

- Public Airports
- × State
 - ✕ Municipal
 - ± Private
- Interstate Highways
 - U.S. Routes
 - State Highways
 - Class 1 - 2 Town Highways
 - Class 3 Town Highways
 - Class 4 Town Highways
 - Legal Trails
 - ⋯ Long Trail
 - ⋯ Appalachian Trail
 - Railroad
 - State Boundary
 - County Boundary
 - Town Boundary

COMPILED BY THE VERMONT AGENCY OF TRANSPORTATION
DIVISION OF POLICY, PLANNING AND INTERMODAL DEVELOPMENT
MONTPELIER, VERMONT 05602

1:250,000



73°30'0"W 73°15'0"W 73°0'0"W 72°45'0"W 72°30'0"W 72°15'0"W 72°0'0"W 71°45'0"W 71°30'0"W 71°15'0"W 71°0'0"W