

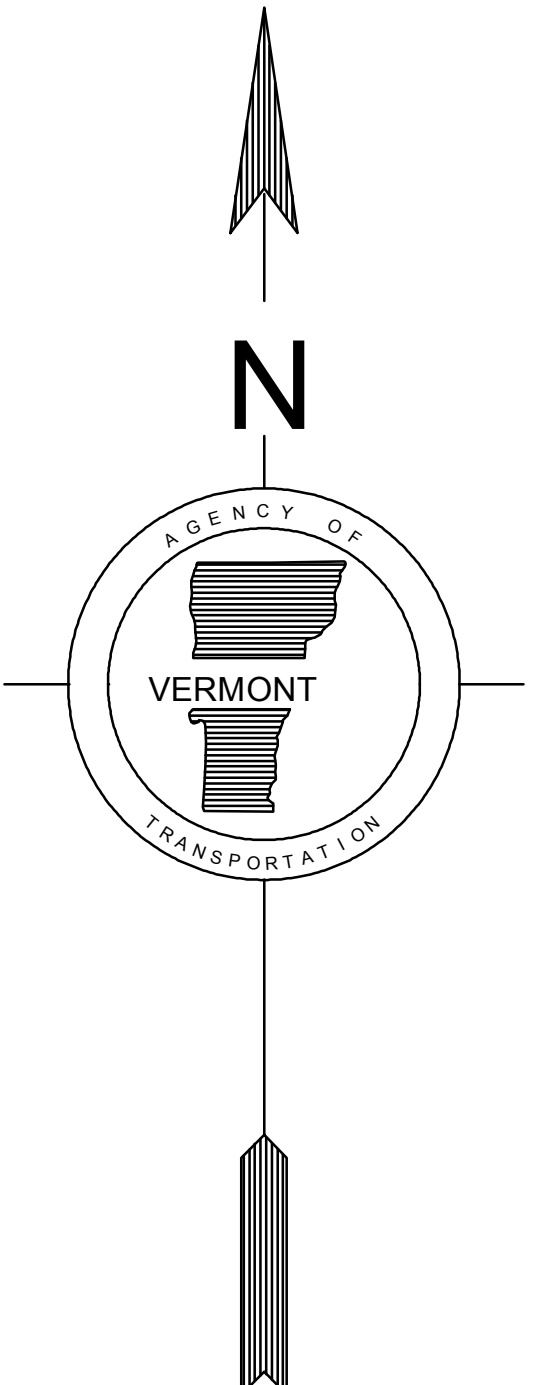
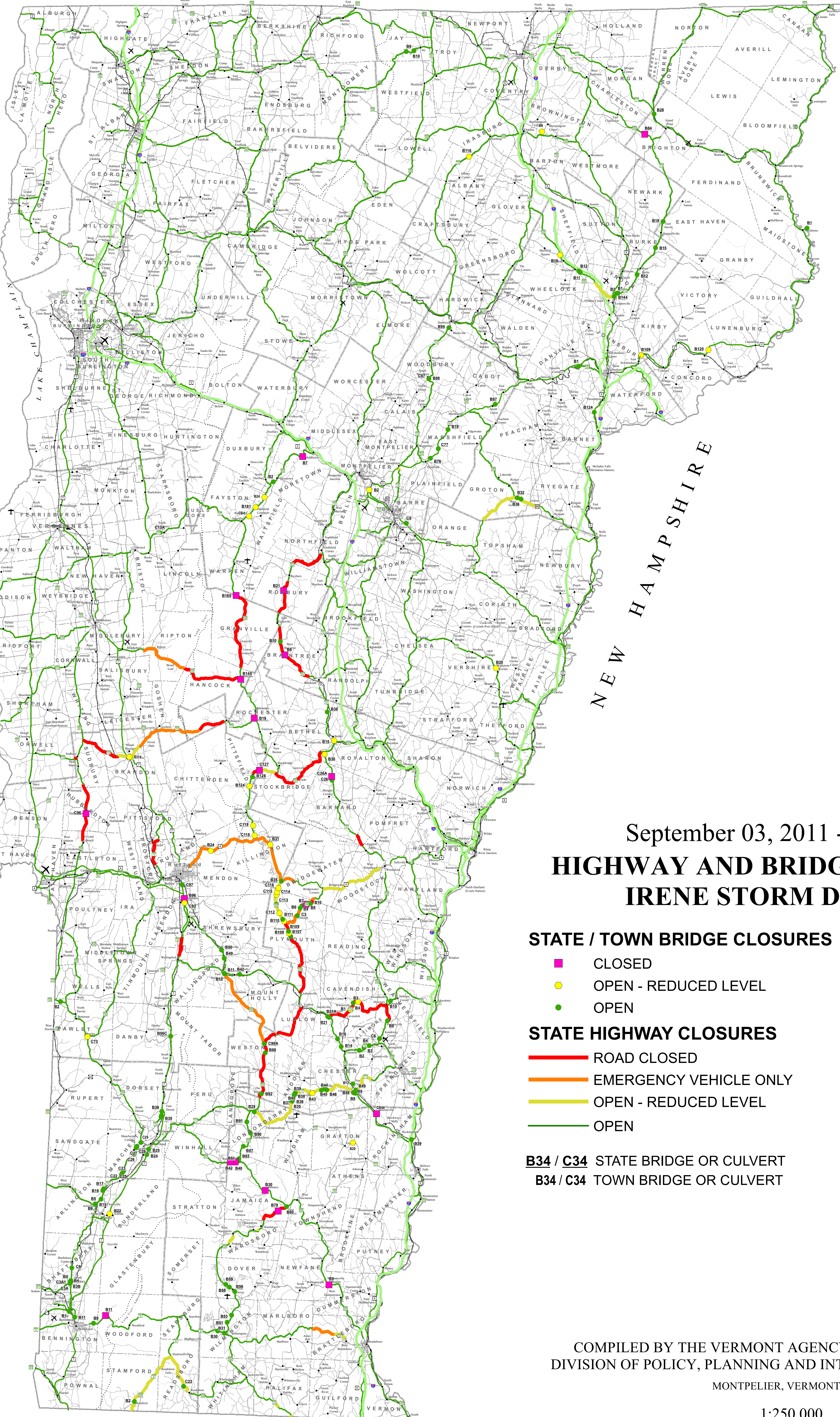
73°30'0"W 73°15'0"W 73°0'0"W 72°45'0"W 72°30'0"W 72°15'0"W 72°0'0"W 71°45'0"W 71°30'0"W 71°15'0"W 71°0'0"W

45°0'0"N 44°45'0"N 44°30'0"N 44°15'0"N 44°0'0"N 43°45'0"N 43°30'0"N 43°15'0"N 43°0'0"N 42°45'0"N 42°30'0"N 42°15'0"N 42°0'0"N

CANADA

NEW YORK

NEW HAMPSHIRE



### September 03, 2011 - 11:57 AM HIGHWAY AND BRIDGE CLOSURES IRENE STORM DAMAGE

#### STATE / TOWN BRIDGE CLOSURES

- CLOSED
- OPEN - REDUCED LEVEL
- OPEN

- × State
- ⊗ Municipal
- † Private

#### STATE HIGHWAY CLOSURES

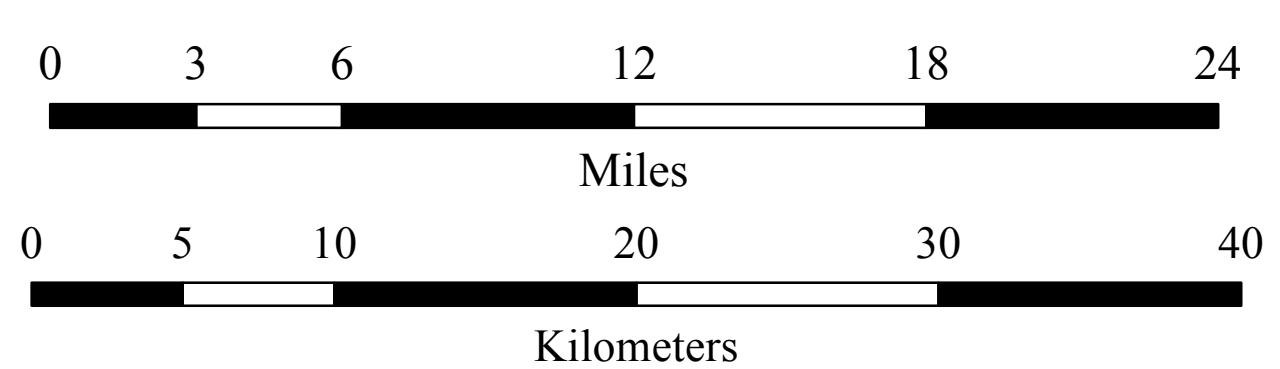
- ROAD CLOSED
- EMERGENCY VEHICLE ONLY
- OPEN - REDUCED LEVEL
- OPEN

- Interstate Highways
- U.S. Routes
- State Highways
- Class 1 - 2 Town Highways
- Class 3 Town Highways
- Class 4 Town Highways
- Legal Trails
- Long Trail
- Appalachian Trail
- Railroad
- State Boundary
- County Boundary
- Town Boundary

**B34 / C34** STATE BRIDGE OR CULVERT  
**B34 / C34** TOWN BRIDGE OR CULVERT

COMPILED BY THE VERMONT AGENCY OF TRANSPORTATION  
DIVISION OF POLICY, PLANNING AND INTERMODAL DEVELOPMENT  
MONTPELIER, VERMONT 05602

1:250,000



MASSACHUSETTS

73°30'0"W 73°15'0"W 73°0'0"W 72°45'0"W 72°30'0"W 72°15'0"W 72°0'0"W 71°45'0"W 71°30'0"W 71°15'0"W 71°0'0"W

For more information regarding this map, please contact the VT Maps Mapping Unit at (802) 828-2800 or at VT Agency of Transportation - Mapping Unit, 1 National Life Drive, Montpelier, VT 05633-3001. This map was funded in part through grants from the Federal Highway Administration, U.S. Department of Transportation. The representation of the authors expressed herein do not necessarily state or reflect those of the U.S. Department of Transportation.