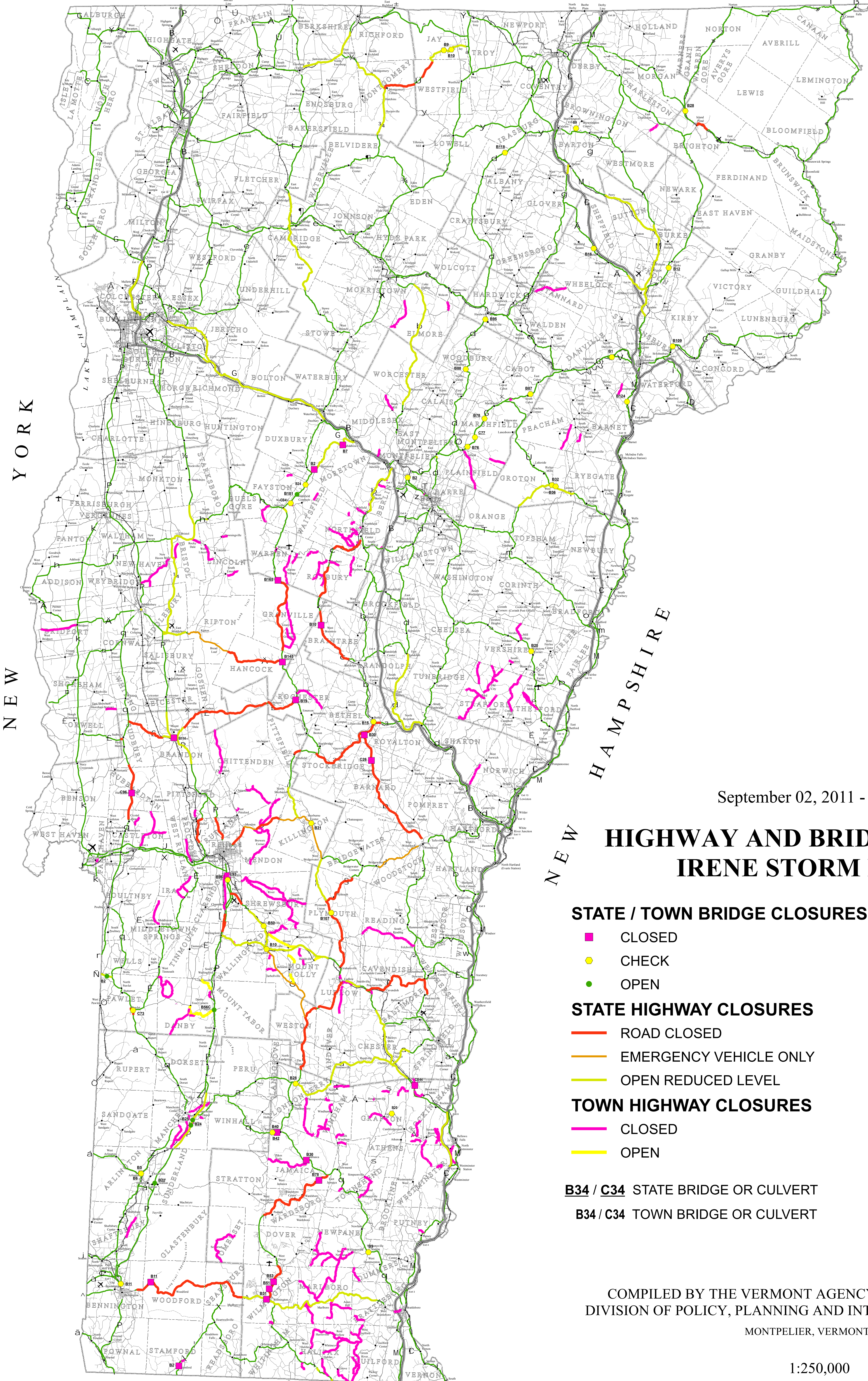


73°30'0"W 73°15'0"W 73°0'0"W 72°45'0"W 72°30'0"W 72°15'0"W 72°0'0"W 71°45'0"W 71°30'0"W 71°15'0"W 71°0'0"W

45°0'0"N 44°45'0"N 44°30'0"N 44°15'0"N 44°0'0"N 43°45'0"N 43°30'0"N 43°15'0"N 43°0'0"N 42°45'0"N 42°30'0"N 42°15'0"N 42°0'0"N

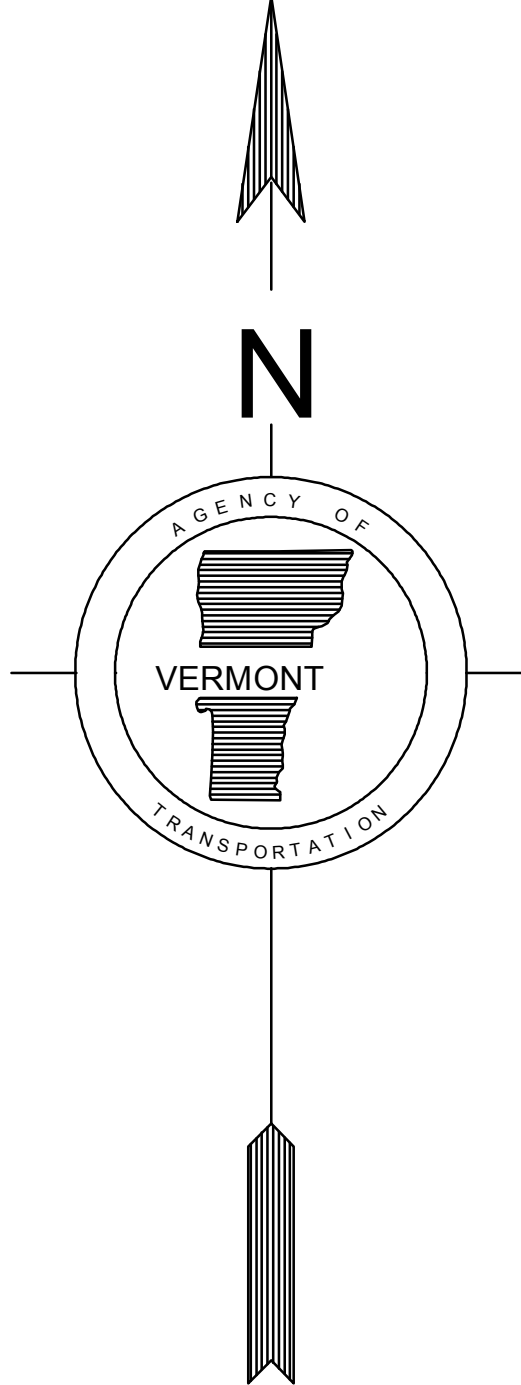
CANADA



NEW YORK

NEW HAMPSHIRE

MASSACHUSETTS



September 02, 2011 - 8:31 AM

HIGHWAY AND BRIDGE CLOSURES IRENE STORM DAMAGE

STATE / TOWN BRIDGE CLOSURES

- CLOSED
- CHECK
- OPEN

STATE HIGHWAY CLOSURES

- ROAD CLOSED
- EMERGENCY VEHICLE ONLY
- OPEN REDUCED LEVEL

TOWN HIGHWAY CLOSURES

- CLOSED
- OPEN

B34 / C34 STATE BRIDGE OR CULVERT
B34 / C34 TOWN BRIDGE OR CULVERT

- Highway Interchange
- Public Airports
- × State
- × Municipal
- + Private
- Interstate Highways
- U.S. Routes
- State Highways
- Class 1 - 2 Town Highways
- Class 3 Town Highways
- Class 4 Town Highways
- Legal Trails
- Railroad
- State Boundary
- County Boundary
- Town Boundary

COMPILED BY THE VERMONT AGENCY OF TRANSPORTATION
DIVISION OF POLICY, PLANNING AND INTERMODAL DEVELOPMENT
MONTPELIER, VERMONT 05602

1:250,000

