

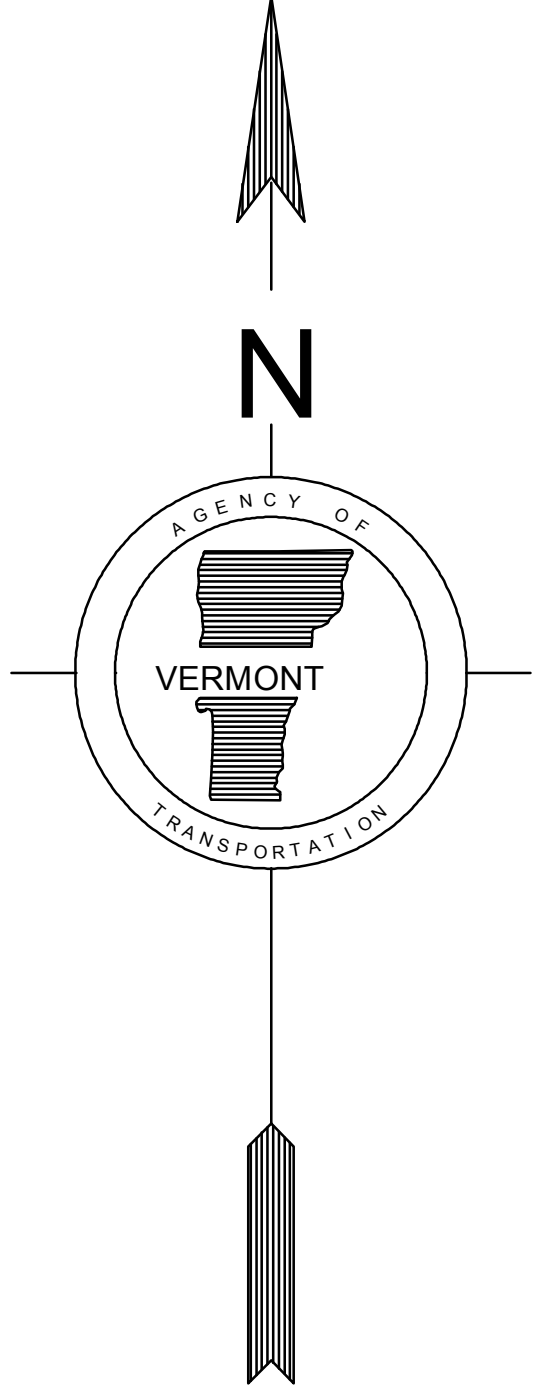
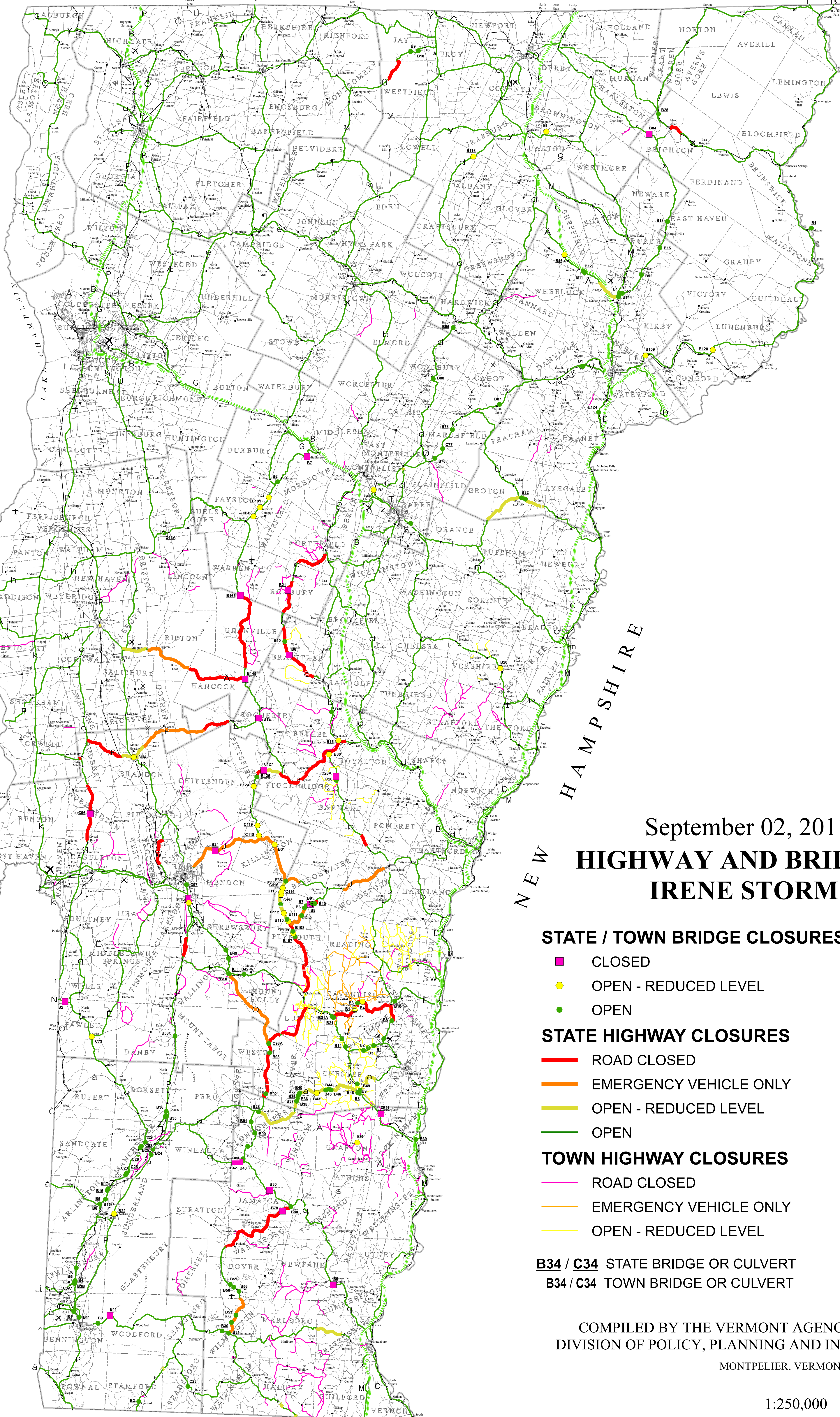
73°30'0"W 73°15'0"W 73°0'0"W 72°45'0"W 72°30'0"W 72°15'0"W 72°0'0"W 71°45'0"W 71°30'0"W 71°15'0"W 71°0'0"W

CANADA

45°0'0"N 44°45'0"N 44°30'0"N 44°15'0"N 44°0'0"N 43°45'0"N 43°30'0"N 43°15'0"N 43°0'0"N 42°45'0"N 42°30'0"N 42°15'0"N 42°0'0"N

NEW YORK

NEW HAMPSHIRE



September 02, 2011 - 4:56 PM HIGHWAY AND BRIDGE CLOSURES IRENE STORM DAMAGE

STATE / TOWN BRIDGE CLOSURES

- CLOSED
- OPEN - REDUCED LEVEL
- OPEN

STATE HIGHWAY CLOSURES

- ROAD CLOSED
- EMERGENCY VEHICLE ONLY
- OPEN - REDUCED LEVEL
- OPEN

TOWN HIGHWAY CLOSURES

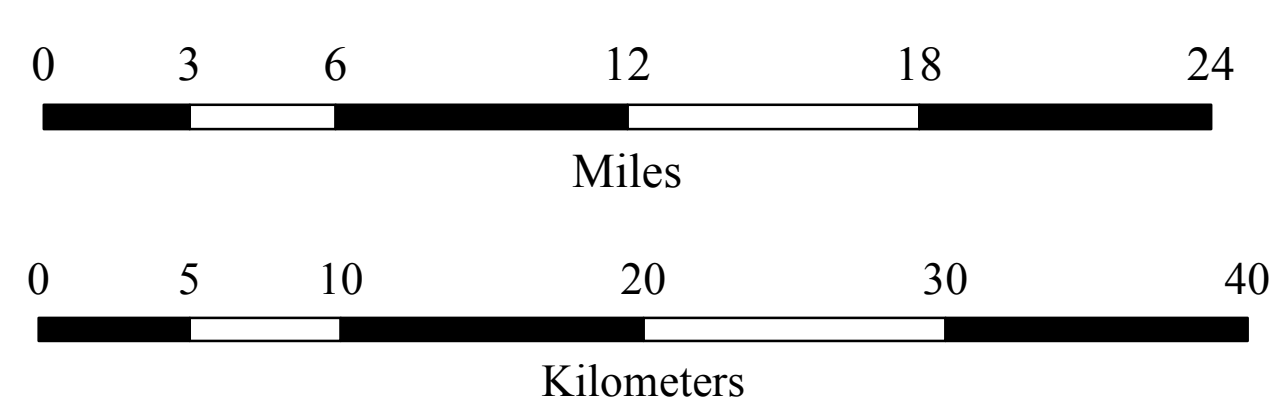
- ROAD CLOSED
- EMERGENCY VEHICLE ONLY
- OPEN - REDUCED LEVEL

B34 / C34 STATE BRIDGE OR CULVERT
B34 / C34 TOWN BRIDGE OR CULVERT

- Highway Interchange
- Public Airports
- × State
- × Municipal
- ± Private
- Interstate Highways
- U.S. Routes
- State Highways
- Class 1 - 2 Town Highways
- Class 3 Town Highways
- Class 4 Town Highways
- Legal Trails
- Railroad
- State Boundary
- County Boundary
- Town Boundary

COMPILED BY THE VERMONT AGENCY OF TRANSPORTATION
 DIVISION OF POLICY, PLANNING AND INTERMODAL DEVELOPMENT
 MONTPELIER, VERMONT 05602

1:250,000



73°30'0"W 73°15'0"W 73°0'0"W 72°45'0"W 72°30'0"W 72°15'0"W 72°0'0"W 71°45'0"W 71°30'0"W 71°15'0"W 71°0'0"W

For more information regarding this map, please contact the VT Maps Mapping Unit at (802) 828-2800 or at VT Agency of Transportation - Mapping Unit, 1 National Life Drive, Montpelier, VT 05633-5001. This map was funded in part through grants from the Federal Highway Administration, U.S. Department of Transportation. The representation of the authors expressed herein do not necessarily state or reflect those of the U.S. Department of Transportation.