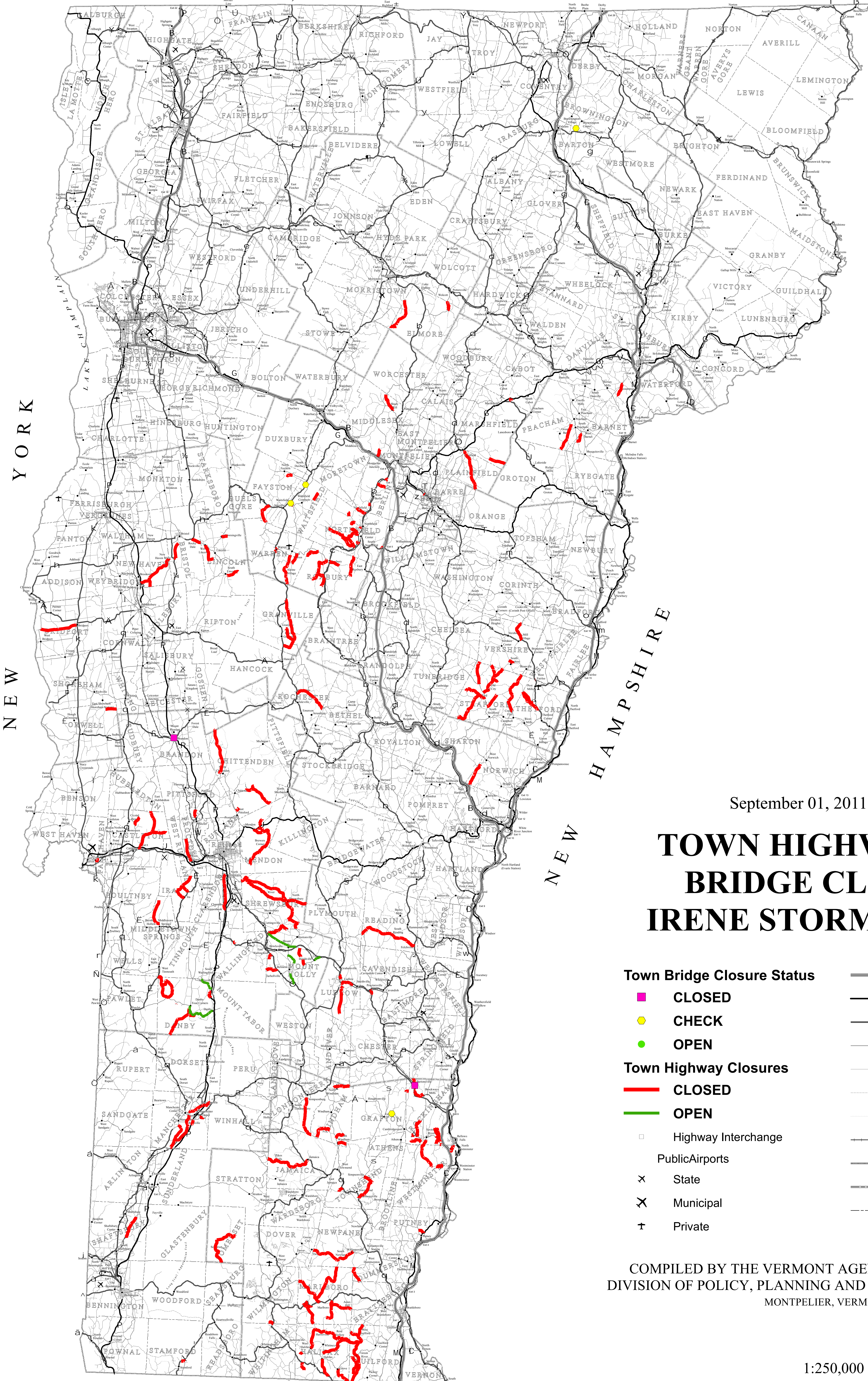


73°30'0"W 73°15'0"W 73°0'0"W 72°45'0"W 72°30'0"W 72°15'0"W 72°0'0"W 71°45'0"W 71°30'0"W 71°15'0"W 71°0'0"W

45°0'0"N 44°45'0"N 44°30'0"N 44°15'0"N 44°0'0"N 43°45'0"N 43°30'0"N 43°15'0"N 43°0'0"N 42°45'0"N 42°30'0"N 42°15'0"N 42°0'0"N

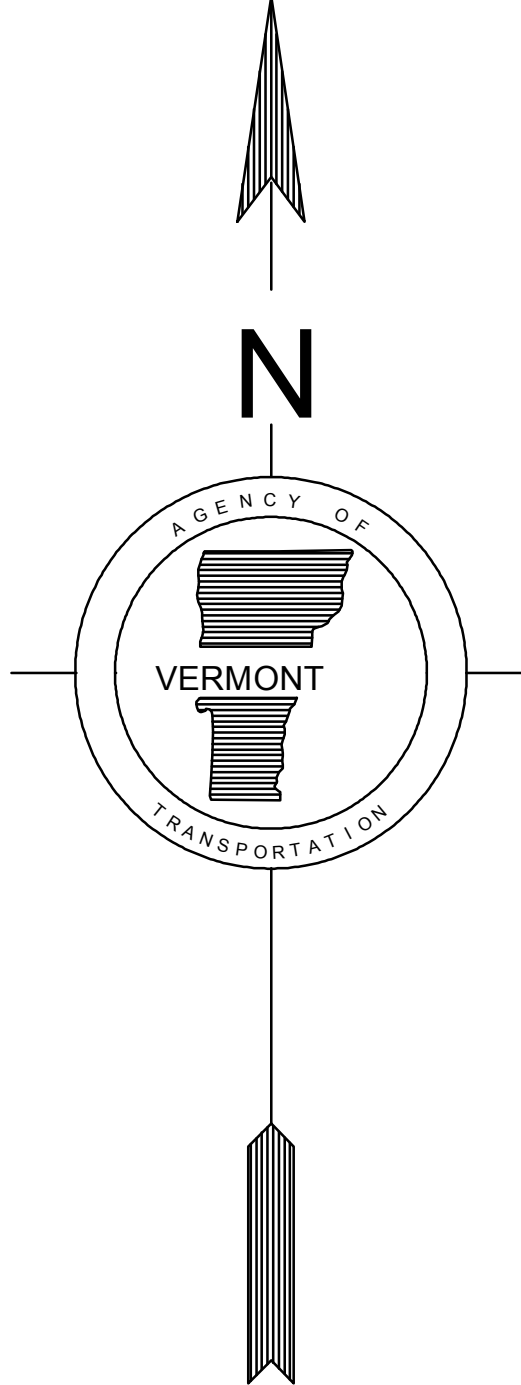
CANADA



NEW YORK

NEW HAMPSHIRE

MASSACHUSETTS



September 01, 2011 - 1:40 PM

TOWN HIGHWAY AND BRIDGE CLOSURES IRENE STORM DAMAGE

- | | |
|-----------------------------------|---------------------------|
| Town Bridge Closure Status | Interstate Highways |
| CHECK | U.S. Routes |
| OPEN | State Highways |
| Town Highway Closures | Class 1 - 2 Town Highways |
| CLOSED | Class 3 Town Highways |
| OPEN | Class 4 Town Highways |
| Highway Interchange | Legal Trails |
| Public Airports | Railroad |
| State | State Boundary |
| Municipal | County Boundary |
| Private | Town Boundary |

COMPILED BY THE VERMONT AGENCY OF TRANSPORTATION
DIVISION OF POLICY, PLANNING AND INTERMODAL DEVELOPMENT
MONTPELIER, VERMONT 05602

1:250,000

