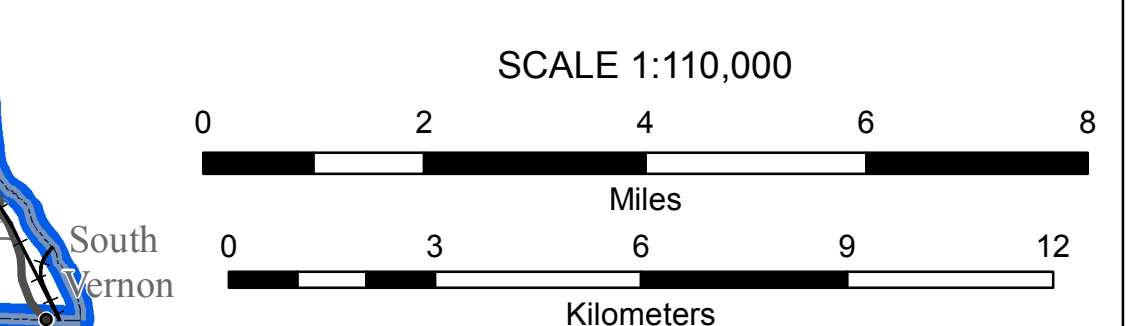


9/19/2011 - 11:45 AM

**HIGHWAY AND BRIDGE CLOSURES  
IRENE STORM DAMAGE  
RUTLAND AND DUMMERSTON  
INCIDENT COMMAND CENTERS AREA**

The effects of Tropical Storm Irene continue to be felt around Vermont. Daily there are new sites where our infrastructure has failed. Extreme caution must be used in travelling any of the roads in the affected areas as road conditions continue to change.



SCALE 1:110,000  
0 2 4 6 8  
0 3 6 9 12  
Miles  
Kilometers

STATE / TOWN BRIDGE CLOSURES  
 ■ CLOSED  
 ● OPEN - PASSENGER VEHICLES ONLY  
 ● OPEN - REDUCED LEVEL  
 ● OPEN  
 STATE HIGHWAY CLOSURES  
 ■ ROAD CLOSED  
 ■ CLOSED - AUTHORIZED VEHICLES ONLY  
 ■ LOCAL TRAFFIC ONLY  
 ■ LIMITED SERVICE - EXPECT DELAYS  
 ■ NORMAL SERVICE RESTORED  
 ■ NO REPORTED DAMAGE - EXPECT NORMAL TRAVEL  
 TOWN HIGHWAY CLOSURES  
 ■ CLOSED  
 ■ EMERGENCY VEHICLE ONLY  
 ■ OPEN REDUCED LEVEL  
 ■ VTRANS DISTRICT - WITH EXTENSIONS

● The Town Highway Closure Information is Incomplete \*\*  
 B34 / C34 STATE BRIDGE OR CULVERT  
 B34 / C34 TOWN BRIDGE OR CULVERT