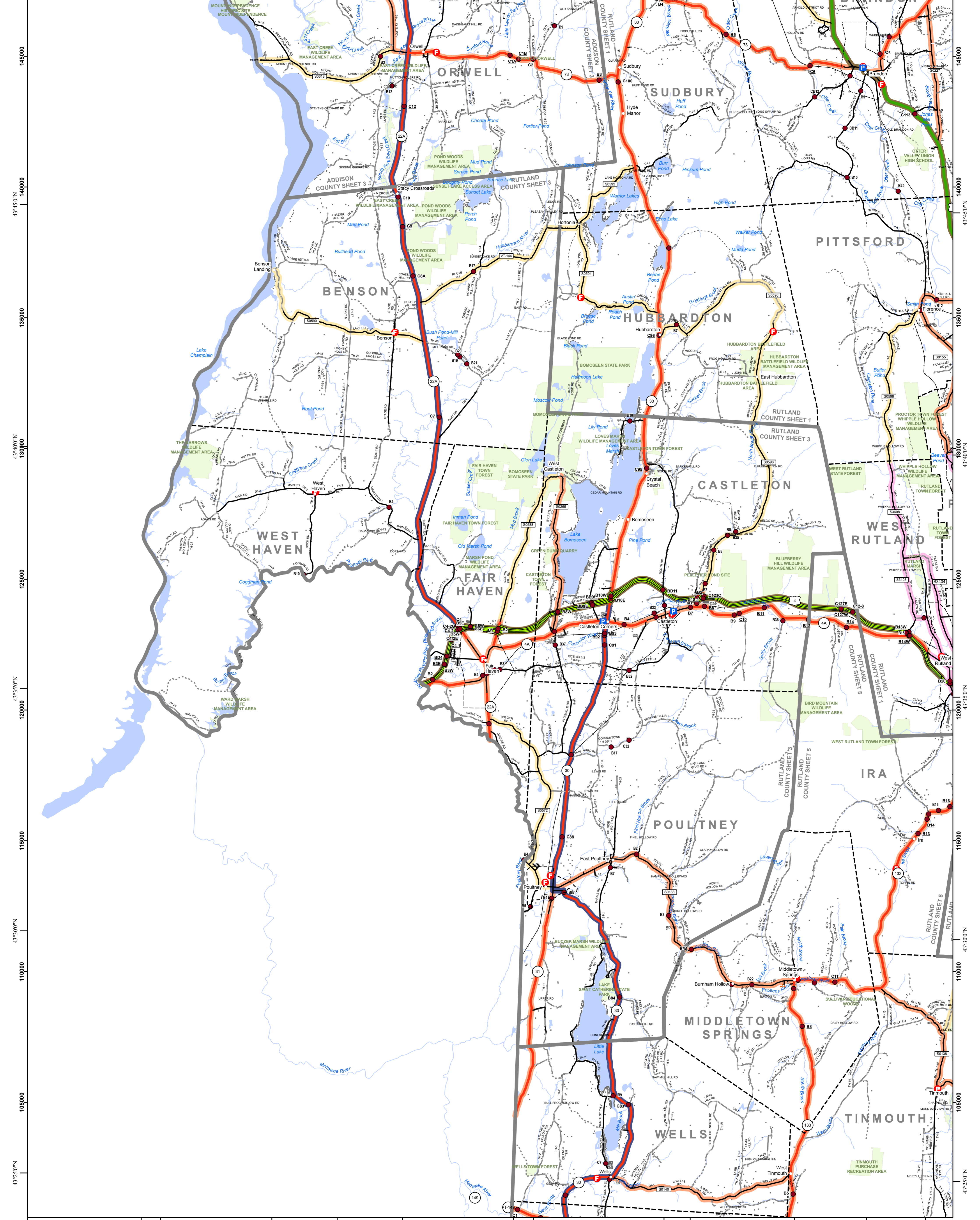


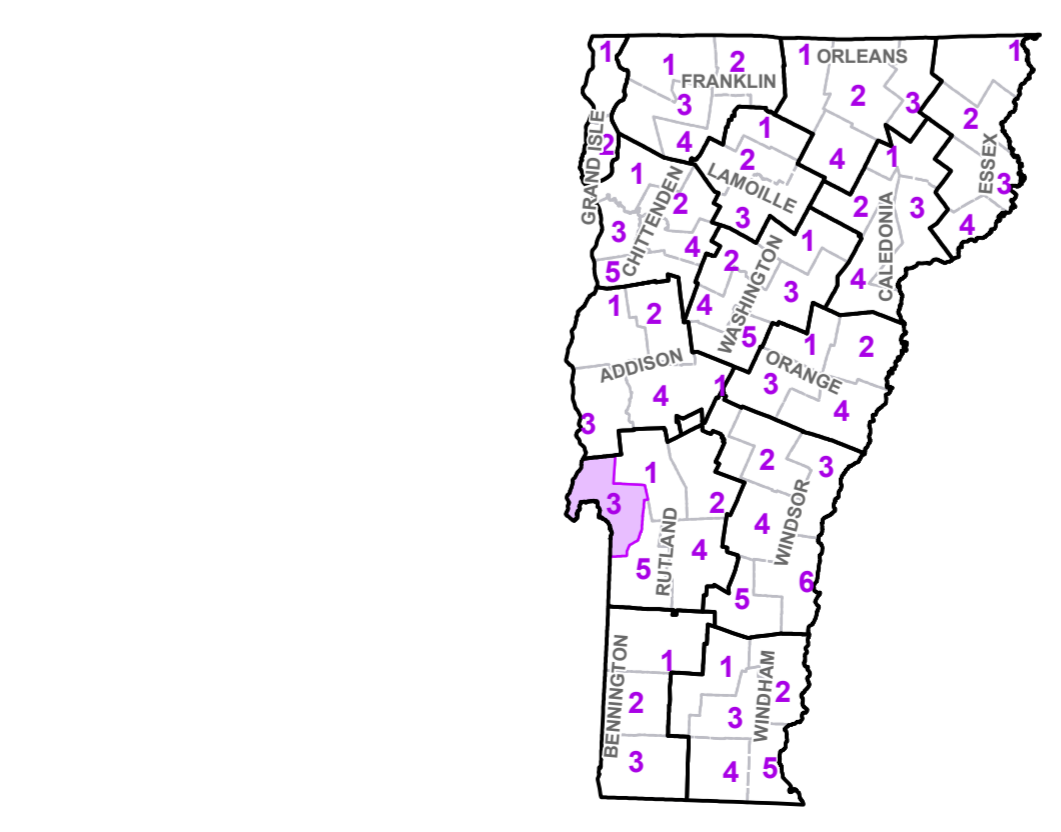
425000 73°25'0"W 430000 73°20'0"W 435000 73°15'0"W 440000 73°10'0"W 445000 73°5'0"W 450000 73°0'0"W 455000



425000 73°25'0"W 430000 73°20'0"W 435000 73°15'0"W 440000 73°10'0"W 445000 73°5'0"W 450000 73°0'0"W 455000

- Interstate
 - U.S. Route
 - Vermont Route
 - Minor Arterial or Collector
 - Interstate
 - US Route Divided
 - US Route
 - State Route Paved
 - State Route Unpaved
 - Town Highway Paved
 - Town Highway Unpaved
 - Unimproved or Impassible
 - Town Legal Trail
 - Discontinued Highway
 - Railroad
- Federal Aid Route
 - Principal Arterial
 - Minor Arterial
 - Major Collector
 - Minor Collector
 - Federal Aid Urban
 - VTrans District Office
 - Emergency Response Site
 - Police Station
 - Fire Station
 - Hospital
 - Localities
 - State Capital (Montpelier)
 - Bridge or Culvert
 - Water Body
 - Stream or Brook
- Public Land
 - State Airport
 - State Boundary
 - County Boundary
 - Town Boundary
 - Village Boundary
 - Urban Compact Boundary
 - County Subtle
 - B20 / C20 State Bridge or Culvert Identifier
 - B20 / C20 Town Bridge or Culvert Identifier

TOWN	TOWN
Benson	Pittsford
Brandon	Poultney
Brandon U.C.	Poultney Village
Castleton	Proctor
Claarendon	Proctor U.C.
Fair Haven	Sudbury
Fair Haven U.C.	Tinmouth
Hubbardton	Wells Town
Ira	West Haven
Middletown Springs	West Rutland
Orwell	West Rutland U.C.
Pawlet	



VERMONT COUNTY - TOWN MAP SERIES
RUTLAND COUNTY SHEET 3 OF 5

Prepared by the
Vermont Agency of Transportation Mapping Unit
 in cooperation with
U.S. Department of Transportation Federal Highway Administration

September 2010

Scale: 1:63360 (printed size 24 x 36 inches)

Contact Information: Vermont Agency of Transportation
 Division of Planning, Outreach and Community Affairs, Mapping Unit
 1 National Life Drive, Montpelier, VT 05633-5001, Telephone: 802-928-2600

This map was funded in part through grants from the Federal Highway Administration, U.S. Department of Transportation. The representation of the authors expressed herein do not necessarily state or reflect those of the U.S. Department of Transportation.