

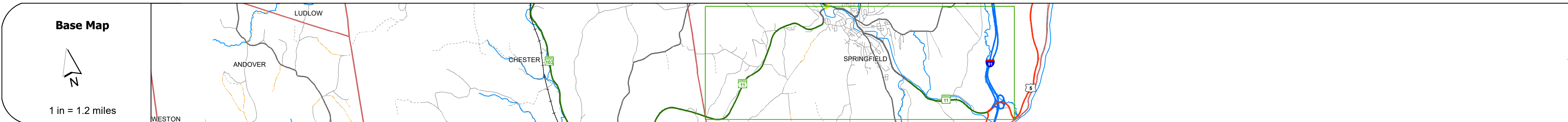
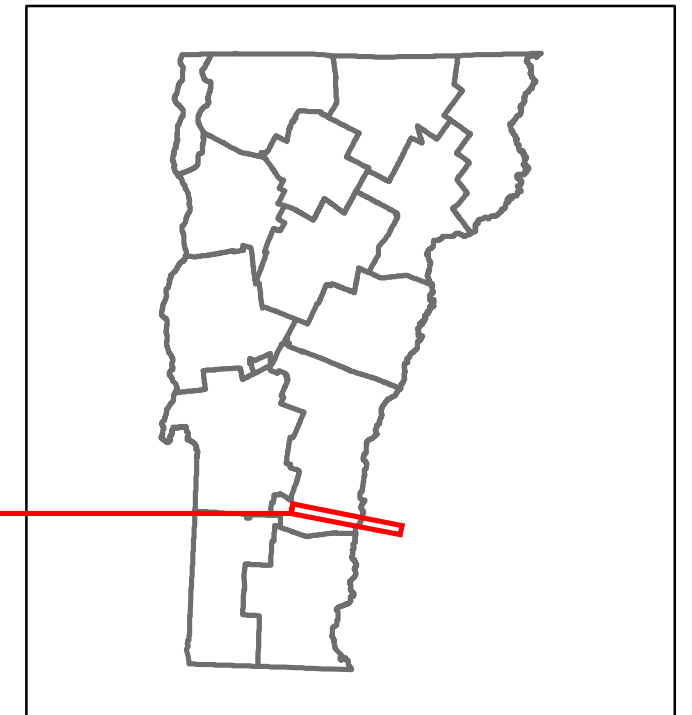


# Route Log and Progress Chart

**DRAFT**

Please Note: Errors and Omissions May Exist.  
Contact the VTrans Mapping Section with questions or concerns.

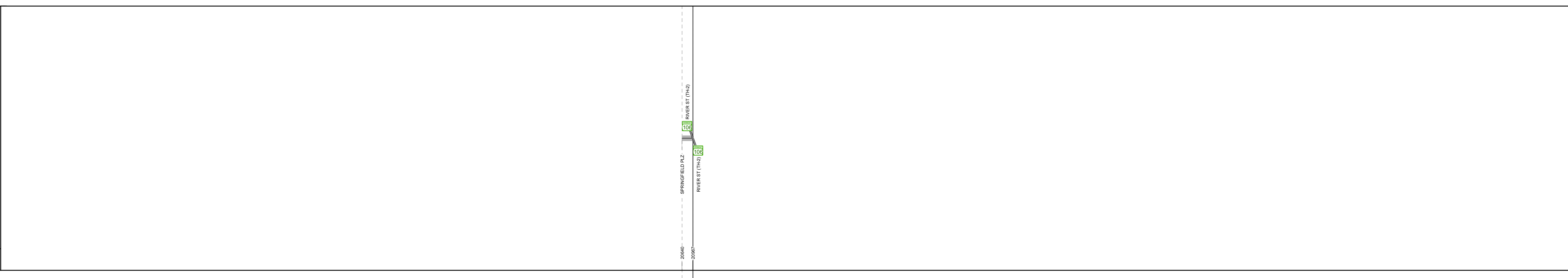
DISTRICT	TOWN	ROUTE
2	SPRINGFIELD	VT-11



**Stick Diagram**

- Town Center
- Intersecting State Routes (excl. ramps/approaches)
- Other Intersecting Highways, Ramps, Approaches
- Railroad Crossings
- Primary Structures
- Secondary Structures
- Divided State Highway
- State Highway
- Divided Town Highway
- Town Highway
- Streams (Hydraulic Structure)
- Town Boundary
- Village/IC Boundaries
- District Boundaries
- State/Town Highway Change
- Divided Highway Limits
- Ghost Section Boundary
- Federal Urban Area Limits

Scale: 1 INCH = 2,000 FEET



## STRUCTURE DESCRIPTIONS

--

<b>Road Widths</b>	Travellane Roadway Lane Count Base Subbase
--------------------	--

<b>Curves</b>	
---------------	--

<b>Grades</b>	
---------------	--

<b>Guardrails</b>	
-------------------	--

<b>Rumblestrips</b>	
---------------------	--

<b>Historic Projects</b>	
--------------------------	--

<b>Maintenance Garage</b>	
---------------------------	--

<b>Speed Zone</b>	
-------------------	--

<b>Functional Class</b>	
-------------------------	--

<b>National Highway System</b>	
--------------------------------	--

<b>Limited Access Highway</b>	
-------------------------------	--

<b>Customer Service Level</b>	
-------------------------------	--

<b>Traffic Counters</b>	
-------------------------	--

<b>AADT Counts</b>	2018	
	2017	
	2016	
	2015	
	2014	

<b>Crash Locations</b>	2018	
	2017	
	2016	
	2015	
	2014	

<p><b>Historic Projects</b></p> <ul style="list-style-type: none"> <li>Unknown</li> <li>Retreatment</li> <li>Resurface</li> <li>Bituminous Mix</li> <li>Skinny Mix</li> <li>Bituminous Seal</li> </ul> <p><b>Surface Treated</b></p> <ul style="list-style-type: none"> <li>Gravel</li> <li>Plant Mix</li> <li>Reclaimed Base and Bituminous Concrete</li> </ul>	<p><b>Functional Class</b></p> <ul style="list-style-type: none"> <li>1 - Interstate</li> <li>2 - Other</li> <li>3 - Principal Arterial</li> <li>4 - Minor Arterial</li> <li>5 - Major Collector</li> <li>6 - Minor Collector</li> </ul> <p><b>Speed Zones</b></p> <ul style="list-style-type: none"> <li>25</li> <li>30</li> <li>35</li> <li>40</li> <li>45</li> <li>50</li> <li>55</li> <li>60</li> <li>65</li> </ul>	<p><b>Curves</b></p> <ul style="list-style-type: none"> <li>Left</li> <li>Right</li> </ul> <p><b>Grades</b></p> <ul style="list-style-type: none"> <li>grade up</li> <li>grade down</li> </ul> <p><b>Road Widths</b></p> <ul style="list-style-type: none"> <li>(ft)</li> </ul>	<p><b>Traffic Counters</b></p> <ul style="list-style-type: none"> <li>Continuous (CTC)</li> <li>Weight-In-Motion (WIM)</li> <li>Short-Term, Scheduled</li> <li>Short-Term, Unscheduled</li> </ul> <p><b>AADT</b></p> <ul style="list-style-type: none"> <li>(count)</li> </ul>	<p><b>Crash Locations</b></p> <ul style="list-style-type: none"> <li>Fatal</li> <li>Injury</li> <li>Property Damage Only</li> <li>Unknown Crash Type</li> </ul> <p><b>High Crash Locations (HCL's)</b></p> <ul style="list-style-type: none"> <li>Sections (&amp; Intersections)</li> <li>HCL No. 1 - 100 (1 - 10)</li> <li>101 - 200 (11 - 20)</li> <li>201 - 300 (21 - 30)</li> <li>301 - 400 (31 - 40)</li> <li>401 - 800 (41 - 113)</li> </ul>	<p><b>Mileage by Functional Class By Sheet</b></p> <p>0134 5 - Major Collector 0.062</p> <p>Page Total Mileage: 0.062 mi</p>	<p><b>Mileage by Town By Sheet</b></p> <p>SPRINGFIELD - V011-1418W 0.062 of 0.062</p> <p>Page Total Mileage: 0.062 mi</p>	<p><b>DISTRICT</b></p> <p>2</p>	<p><b>TOWN</b></p> <p>SPRINGFIELD</p>	<p><b>Date:</b> 12/02/19</p> <p><b>1 of 1</b></p> <p>ETE mileage: 3.909 to 3.971</p>	<p><b>ROUTE</b></p> <p>VT-11</p> <p>ETE mileage: 36.669 to 36.731</p>
					<p>Indicated plans available - <a href="http://vtransmap01.ad.state.vt.us/rp/dpr/D/webstore/">http://vtransmap01.ad.state.vt.us/rp/dpr/D/webstore/</a></p>		<p>For More Information Contact - Vermont Agency of Transportation, Policy, Planning and Intermodal Development Division - Mapping Section, 1 National Life Drive, Montpelier, VT 05633-5001 Telephone: 802-828-2600.</p>			