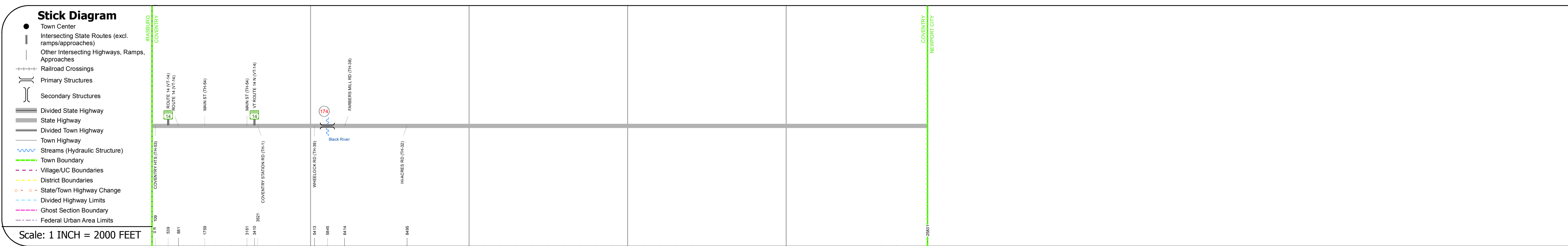
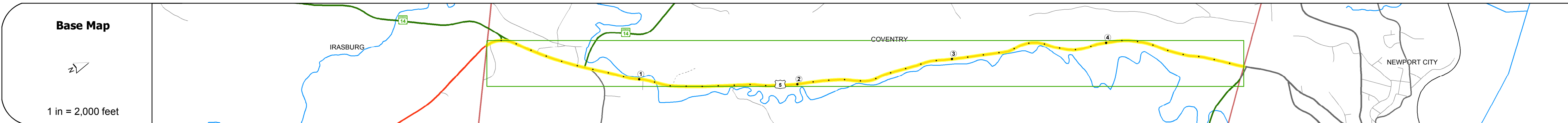
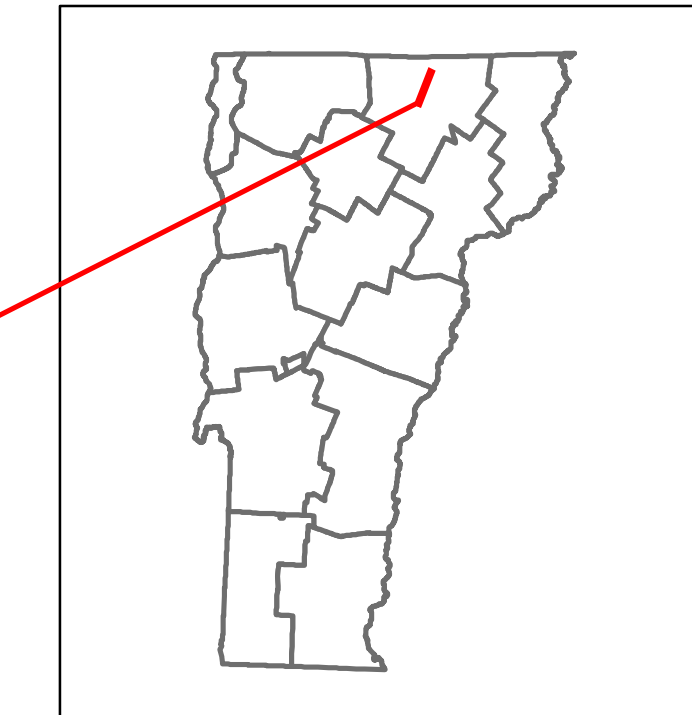
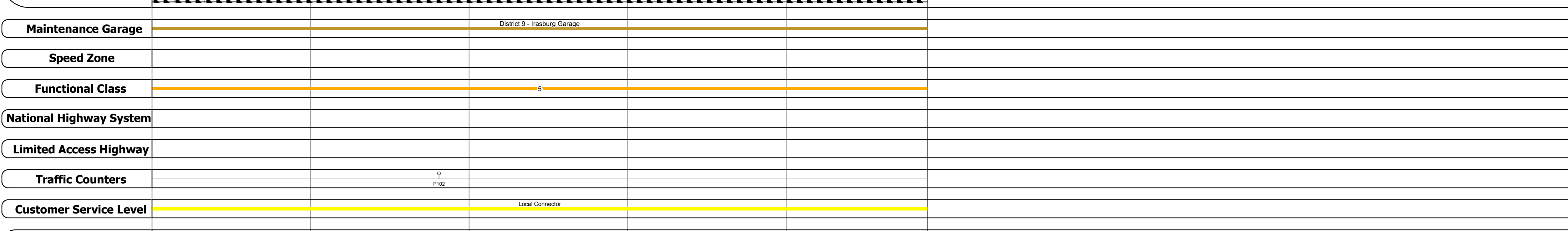
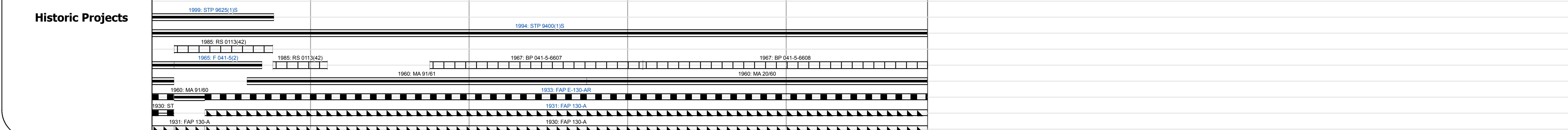
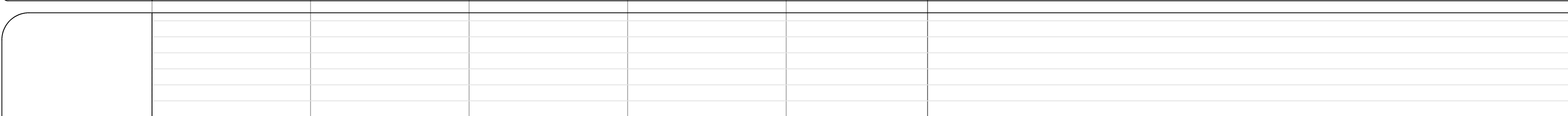
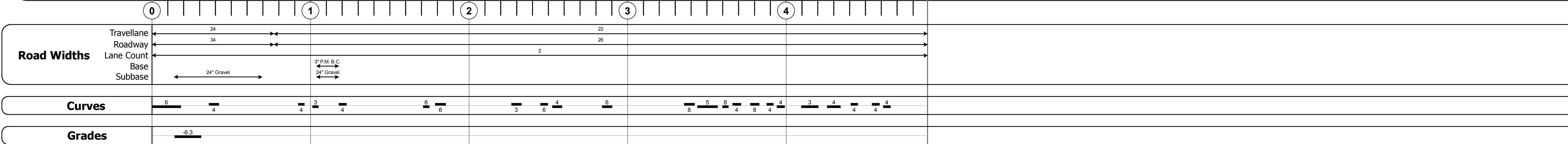


DISTRICT	TOWN	ROUTE
9	COVENTRY	US-5

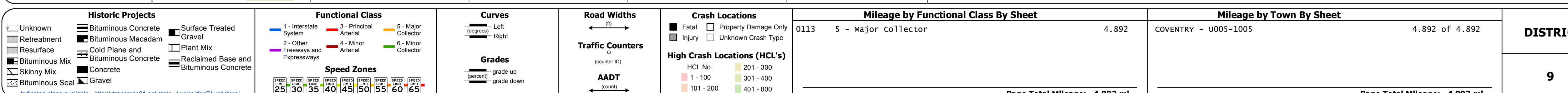
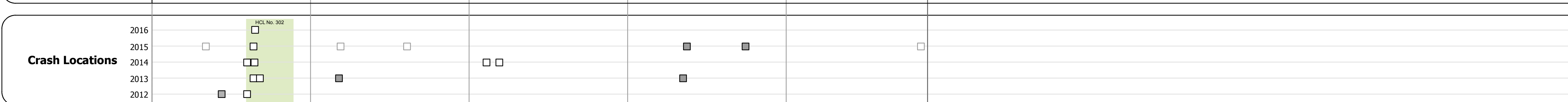


STRUCTURE DESCRIPTIONS

Bridge 174:
Stringer/multi-beam or girder - 1980
Structure No: 200113017410052
Length: 140'
Width: 33.0'
Facility Carried: US 00005 ML
Bridge Type: 3 SP CONT CANT GDR
Features Intersected: BLACK RIVER
Surface: Bituminous
Maintenance/Ownership: State



Maintenance Garage	District 9 - Irasburg Garage
Speed Zone	
Functional Class	5
National Highway System	
Limited Access Highway	
Traffic Counters	P102
Customer Service Level	Local Connector



Mileage by Functional Class By Sheet		Mileage by Town By Sheet		DISTRICT	TOWN	Date: 10/24/17	ROUTE
0113	5 - Major collector	4.892	COVENTRY - U005-1005	9	COVENTRY	1 of 1 TWN mileage: 0.0 to 4.892	US-5 ETE mileage: 177.608 to 182.5
Page Total Mileage: 4.892 mi		Page Total Mileage: 4.892 mi					