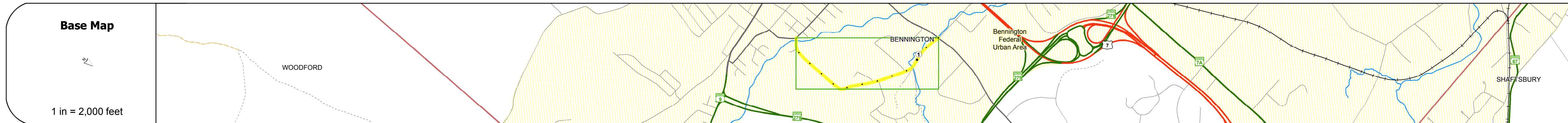


DISTRICT	TOWN	ROUTE
1	BENNINGTON	Min-1009



Min-1009



STRUCTURE DESCRIPTIONS

Bridge 33:
Stringer/multi-beam or girder - 1958
Structure No: 201009003302022
Length: 151'
Width: 30.5'
Facility Carried: NORTH BRANCH ST
Bridge Type: 2 SP ROLLED BEAM
Features Intersected: ROARING BR WALLOOMSAC BK
Surface: Bituminous
Maintenance/Ownership: Town

Bridge 24:
Slab - 1964
Structure No: 201009002402022
Length: 45'
Width: 26.3'
Weight Limit:
Facility Carried: NORTH BRANCH ST
Bridge Type: PRESTRESS CONC SLAB
Features Intersected: FURNACE BROOK
Surface: Bituminous
Maintenance/Ownership: Town

Road Widths	Travellane	Roadway	Lane Count	Base	Subbase
19	19	20	23	19	22
20	20	23	19	22	24
21	21	24	21	25	21
22	22	24	21	25	21
23	23	24	21	25	21
24	24	24	21	25	21

Curves	Scale
10	10

Grades

Historic Projects
2000: BHO-1441009

Maintenance Garage

Speed Zone

Functional Class
5

National Highway System

Limited Access Highway

Traffic Counters
8284

Customer Service Level

AADT Counts	Year	Count
2016	3000	
2015	3300	
2014	3500	
2013	3800	
2012	3800	

Crash Locations	Year	Location
2016		
2015		
2014		
2013		
2012		

Historic Projects Unknown, Retreatment, Resurface, Bituminous Mix, Skiny Mix, Bituminous Seal, Concrete, Surface Treated Gravel, Plant Mix, Reclaimed Base and Bituminous Concrete	Functional Class 1- Interstate System, 2- Other Freeways and Expressways, 3- Principal Arterial, 4- Minor Arterial, 5- Major Collector, 6- Minor Collector	Curves Left (segres), Right, Grades: grade up, grade down	Road Widths Traffic Counters (counter ID), AADT (count)	Crash Locations Fatal, Injury, Property Damage Only, Unknown Crash Type, High Crash Locations (HCL's)	Mileage by Functional Class By Sheet 1009 5 - Major collector 1.200	Mileage by Town By Sheet BENNINGTON - S10090202 1.2 of 1.2	DISTRICT 1	TOWN BENNINGTON	Date: 10/27/17	ROUTE Min-1009 ETE mileage: 0.0 to 1.2
Page Total Mileage: 1.200 mi						Page Total Mileage: 1.2 mi				