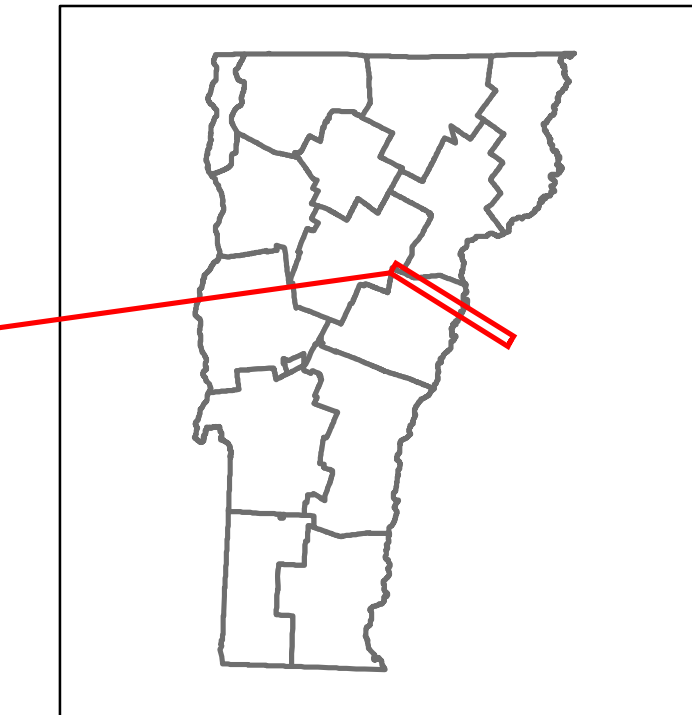


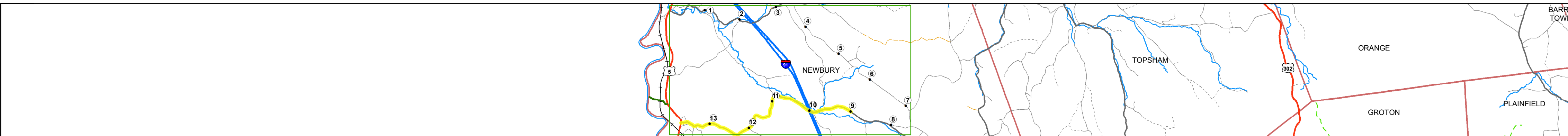
DISTRICT	TOWN	ROUTE
7	NEWBURY	Min-0670



Min-0670

**Base Map**

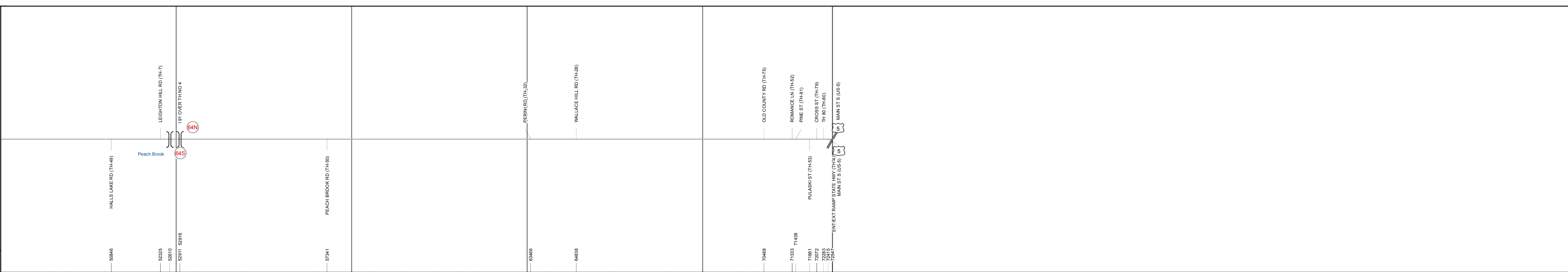
1 in = 1.5 miles



**Stick Diagram**

- Town Center
- Intersecting State Routes (excl. ramps/approaches)
- Other Intersecting Highways, Ramps, Approaches
- Railroad Crossings
- Primary Structures
- Secondary Structures
- Divided State Highway
- State Highway
- Divided Town Highway
- Town Highway
- Streams (Hydraulic Structure)
- Town Boundary
- Village/UC Boundaries
- District Boundaries
- State/Town Highway Change
- Divided Highway Limits
- Ghost Section Boundary
- Federal Urban Area Limits

Scale: 1 INCH = 2000 FEET



**STRUCTURE DESCRIPTIONS**

**Bridge 64S:**  
Stringer/multi-beam or girder - 1973  
Structure No: 200091064S09072  
Length: 128'  
Width: 36.6'  
Under Clearance: 14.0'  
Facility Carried: 1 00091 ML  
Bridge Type: WELDED PLATE GIRDER  
Features Intersected: 1 91 OVER TH NO 4  
Surface: Bituminous  
Maintenance/Ownership: State

**Bridge 64N:**  
Stringer/multi-beam or girder - 1973  
Structure No: 200091064N09072  
Length: 98'  
Width: 36.6'  
Under Clearance: 14.67'  
Facility Carried: 1 00091 ML  
Bridge Type: WELDED PLATE GIRDER  
Features Intersected: 1 91 OVER TH NO 4  
Surface: Bituminous  
Maintenance/Ownership: State

Road Widths	Travellane	Roadway	Lane Count	Base	Subbase
			20	31	2

Curves	
--------	--

Grades	
--------	--

Historic Projects	
-------------------	--

Maintenance Garage	
--------------------	--

Speed Zone	
------------	--

Functional Class	6
------------------	---

National Highway System	
-------------------------	--

Limited Access Highway	
------------------------	--

Traffic Counters	
------------------	--

Customer Service Level	
------------------------	--

AA DT Counts	2016	
	2015	
	2014	
	2013	
	2012	

Crash Locations	2016	
	2015	
	2014	
	2013	
	2012	

**Historic Projects**

- Unknown
- Bituminous Concrete
- Retreatment
- Bituminous Macadam
- Resurface
- Cold Plane and Bituminous Concrete
- Skippy Mix
- Concrete
- Bituminous Seal
- Gravel
- Plant Mix
- Reclaimed Base and Bituminous Concrete

**Functional Class**

- 1 - Interstate System
- 2 - Other Freeways and Expressways
- 3 - Principal Arterial
- 4 - Minor Arterial
- 5 - Major Collector
- 6 - Minor Collector

**Speed Zones**

25 30 35 40 45 50 55 60 65

**Curves**

- Left (segreg)
- Right

**Grades**

- grade up
- grade down

**Road Widths** (ft)

**Traffic Counters** (counter ID)

**AA DT** (count)

**Crash Locations**

- Fatal
- Property Damage Only
- Injury
- Unknown Crash Type

**High Crash Locations (HCL's)**

HCL No. 201 - 300

- 1 - 100
- 101 - 200
- 301 - 400
- 401 - 800

**Mileage by Functional Class By Sheet**

0670	6 - minor collector	4.740
------	---------------------	-------

Page Total Mileage: 4.740 mi

**Mileage by Town By Sheet**

NEWBURY - S06700907	4.74 of 13.74
---------------------	---------------

Page Total Mileage: 4.74 mi

DISTRICT	TOWN	Date: 10/18/17	ROUTE
7	NEWBURY	2 of 2 TWN mileage: 9.0 to 13.74	Min-0670 ETE mileage: 9.0 to 13.74