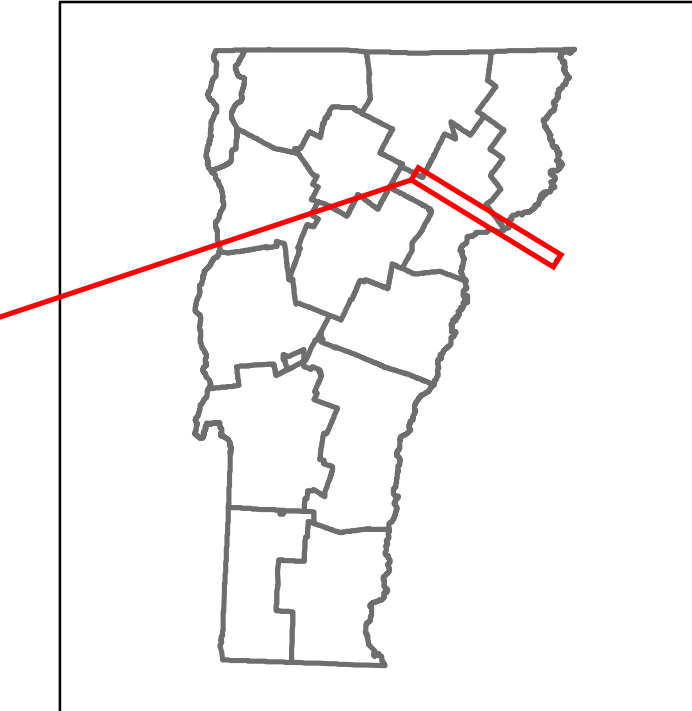


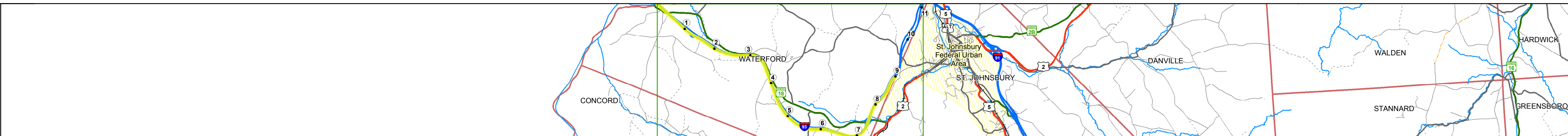
Please Note: Errors and Omissions May Exist.
Contact the VTrans Mapping Section with questions or concerns.

DISTRICT	TOWN	ROUTE
7	ST. JOHNSBURY, WATERFORD	I-93



Base Map

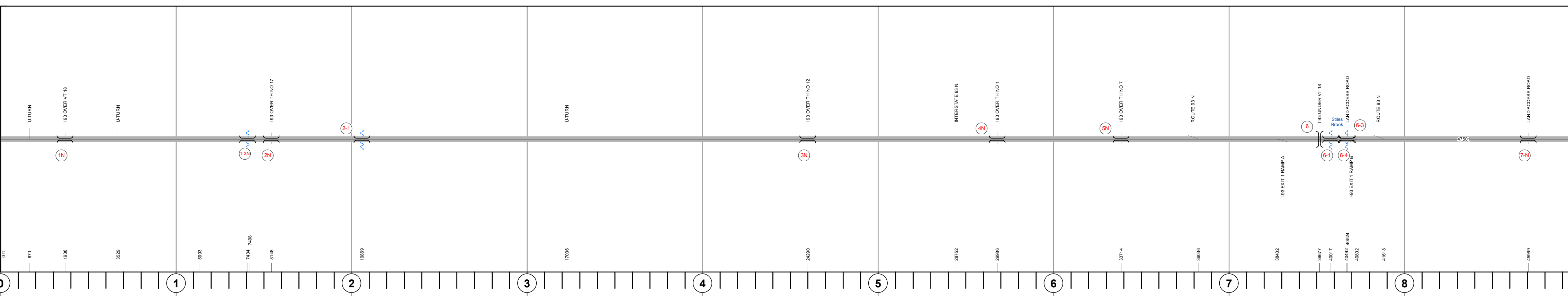
1 in = 1.8 miles



Stick Diagram

- Town Center
- Intersecting State Routes (excl. ramps/approaches)
- Other Intersecting Highways, Ramps, Approaches
- Railroad Crossings
- Primary Structures
- Secondary Structures
- Divided State Highway
- State Highway
- Divided Town Highway
- Town Highway
- Streams (Hydraulic Structure)
- Town Boundary
- Village/UC Boundaries
- District Boundaries
- State/Town Highway Change
- Divided Highway Limits
- Ghost Section Boundary
- Federal Urban Area Limits

Scale: 1 INCH = 2000 FEET



Road Widths

Travellane	Roadway	Lane Count	Base	Subbase
23'	22'	2	Two 2 1/2" Plant Mix Base Courses	24" Crushed Stone

Curves

--	--	--	--	--

Grades

--	--	--	--	--

Historic Projects

2015: IM MEMB(31)	2008: HES 093-110	2015: IM MEMB(31)
1978: I 93-107	1982: I 93-103) C1	1982: I 93-103) C2
	1983: I 93-104) C1 STAGE 3	1982: I 93-103) C3

Maintenance Garage

District 7 - St. Johnsbury Garage

Speed Zone

--

Functional Class

1

National Highway System

NHS - Interstate

Limited Access Highway

Full

Traffic Counters

C221	C215
------	------

Customer Service Level

Interstate Or Divided Highway

AADT Counts

Year	Count
2016	6100
2015	6000
2014	6100
2013	6100
2012	6200



STRUCTURE DESCRIPTIONS

<p>Bridge 1N: Frame - 1982 Structure No. 200093001N03162 Length: 205' Width: 36.7' Under Clearance: 16.83' Facility Carried: I 93 ML Structure Type: STEEL RIGID FRAME Features Intersected: I 93 OVER VT 18 Surface: Bituminous Maintenance/Ownership: State</p>	<p>Bridge 6-4: Culvert - 1982 Structure No. 30009306-403161 Length: 14' Under Clearance: 12.0' Facility Carried: I93 Structure Type: R C BOX Features Intersected: LAND ACCESS ROAD Maintenance: State</p>
<p>Culvert 1-2N: Culvert - 1982 Structure No. 30009301-2N03161 Length: 6' Under Clearance: 6.0' Facility Carried: I93 Structure Type: ACCOMP Features Intersected: BROOK Maintenance: State</p>	<p>Bridge 7-N: Culvert - 1982 Structure No. 300093007N03161 Length: 14' Under Clearance: 12.0' Facility Carried: I93 Structure Type: R C BOX Features Intersected: LAND ACCESS ROAD Maintenance: State</p>
<p>Culvert 2N: Culvert - 1982 Structure No. 200093002N03162 Length: 28' Under Clearance: 13.92' Facility Carried: I 93 ML Structure Type: CONCRETE BOX Features Intersected: I 93 OVER TH NO 17 Maintenance/Ownership: State</p>	<p>Culvert 2-1: Culvert - 1982 Structure No. 30009302-103161 Length: 7' Under Clearance: 7.0' Facility Carried: I93 Structure Type: CGMPP Features Intersected: BROOK Maintenance: State</p>
<p>Bridge 3N: Stringer/multi-beam or girder - 1982 Structure No. 200093003N03162 Length: 113' Width: 36.7' Under Clearance: 15.17' Facility Carried: I 93 ML Structure Type: WELDED PLATE GIRDER Features Intersected: I 93 OVER TH NO 12 Surface: Bituminous Maintenance/Ownership: State</p>	<p>Culvert 4N: Culvert - 1982 Structure No. 200093004N03162 Length: 28' Under Clearance: 14.67' Facility Carried: I 93 ML Structure Type: CONCRETE BOX Features Intersected: I 93 OVER TH NO 1 Maintenance/Ownership: State</p>
<p>Bridge 5N: Stringer/multi-beam or girder - 1982 Structure No. 200093005N03162 Length: 109' Width: 36.7' Under Clearance: 18.5' Facility Carried: I 93 ML Structure Type: WELDED PLATE GIRDER Features Intersected: I 93 OVER TH NO 7 Surface: Bituminous Maintenance/Ownership: State</p>	<p>Bridge 6: Stringer/multi-beam or girder - 1982 Structure No. 20022500903162 Length: 214' Facility Carried: VT 18 ML Structure Type: 2 SP CONT WLD PL GIR Features Intersected: I 93 UNDER VT 18</p>
<p>Culvert 6-1: Culvert - 1982 Structure No. 30009306-103161 Length: 14' Under Clearance: 7.0' Facility Carried: I93 Structure Type: R C BOX Features Intersected: STILES BROOK Maintenance: State</p>	<p>Culvert 6-3: Culvert - 1982 Structure No. 30009306-303161 Length: 9' Under Clearance: 7.0' Facility Carried: I93 Structure Type: R C BOX Features Intersected: WATER MAIN SLEEVE Maintenance: State</p>

<p>Historic Projects</p> <ul style="list-style-type: none"> Unknown Retreatment Resurface Bituminous Mix Skinny Mix Bituminous Seal 	<p>Functional Class</p> <ul style="list-style-type: none"> 1 - Interstate System 2 - Other Freeways and Expressways 3 - Principal Arterial 4 - Minor Arterial 5 - Major Collector 6 - Minor Collector 	<p>Curves</p> <ul style="list-style-type: none"> Left Right 	<p>Road Widths</p> <p>(ft)</p>	<p>Traffic Counters</p> <p>(counter ID)</p>	<p>Crash Locations</p> <ul style="list-style-type: none"> Fatal Injury Property Damage Only Unknown Crash Type 	<p>High Crash Locations (HCL's)</p> <ul style="list-style-type: none"> HCL No. 201 - 300 1 - 100 101 - 200 301 - 400 401 - 800 	<p>Mileage by Functional Class By Sheet</p> <p>93-1 1 - Interstate 9.000</p>	<p>Mileage by Town By Sheet</p> <p>ETE - I093-0000 9.0 of 11.104</p>	<p>DISTRICT</p> <p>7</p>	<p>TOWN</p> <p>ST. JOHNSBURY, WATERFORD</p>	<p>Date: 11/03/17</p>	<p>ROUTE</p> <p>I-93</p> <p>ETE mileage: 0.0 to 9.0</p>
--	--	--	---------------------------------------	--	---	--	---	---	---------------------------------	--	------------------------------	--

Page Total Mileage: 9.000 mi

Page Total Mileage: 9.0 mi