

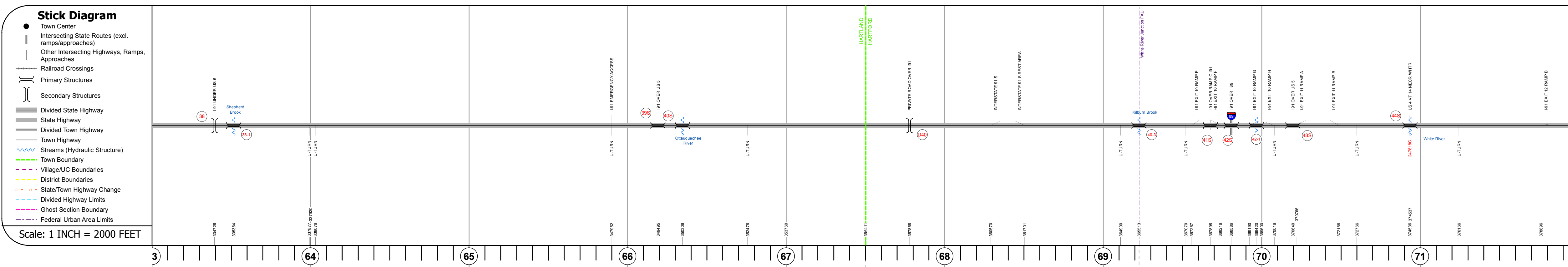
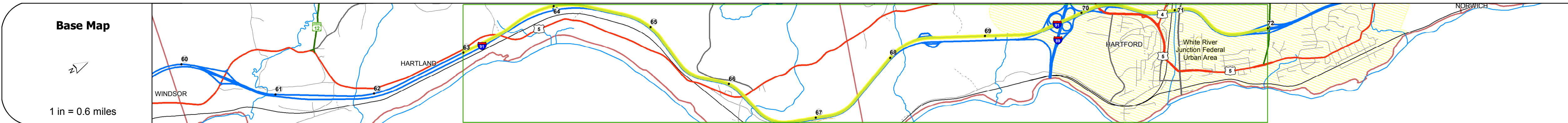
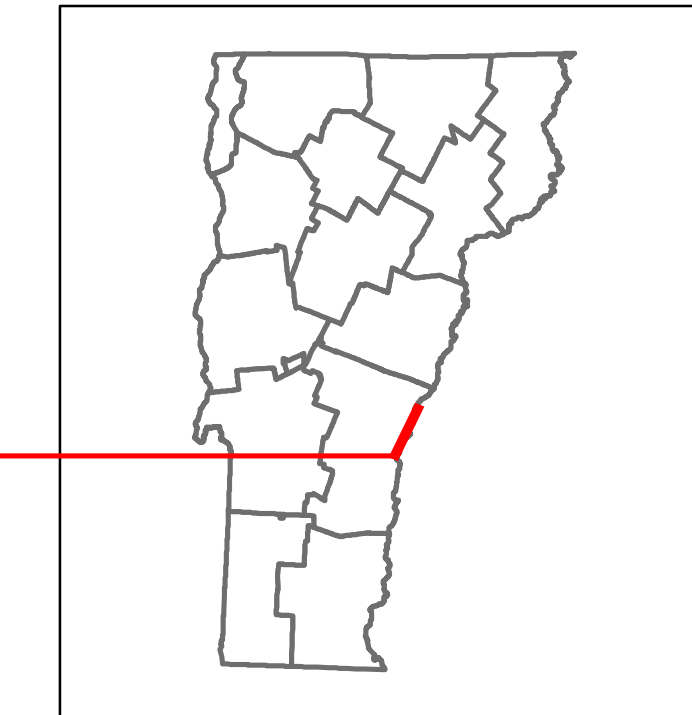


Route Log and Progress Chart

DRAFT

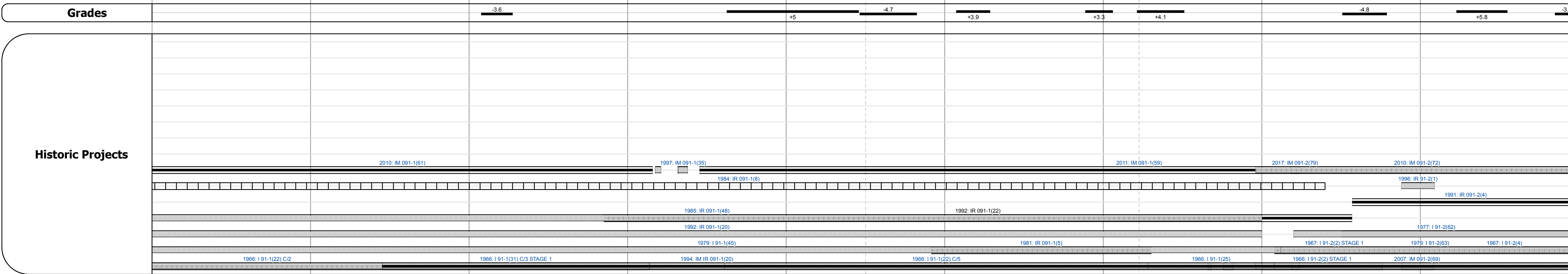
Please Note: Errors and Omissions May Exist.
Contact the VT Trans Mapping Section with questions or concerns.

DISTRICT	TOWN	ROUTE
4	HARTFORD, HARTLAND	I-91



Travellane	Roadway	Lane Count	Base	Subbase
				Two 2 1/2" Cr. Stone Base Courses 24" Crushed Rock

Curves	Grades
3	-3.6
3	+5
3	-4.7
	+3.9
	+3.3
	+4.1
	-4.8
	+5.8
	-3.5



Maintenance Garage	District 4 - Windsor Garage	District 4 - White River Garage
--------------------	-----------------------------	---------------------------------

Speed Zone	55
------------	----

Functional Class	Interstate
------------------	------------

National Highway System	NHS - Interstate
-------------------------	------------------

Limited Access Highway	Full
------------------------	------

Traffic Counters	
------------------	--

Customer Service Level	Interstate Or Divided Highway
------------------------	-------------------------------

AA DT Counts	Crash Locations
2016	
2015	
2014	
2013	
2012	

STRUCTURE DESCRIPTIONS

Bridge 38:
Stringer/multi-beam or girder - 1965
Structure No. 20011306214092
Length: 375'
Facility Carried: US 05 ML
Structure Type: 5 SP ROLLED BEAM
Features Intersected: I 91 UNDER US 5

Culvert 38-1:
Culvert - 1966
Structure No. 30009138-114091
Length: 7'
Under Clearance: 7.5'
Facility Carried: I 91
Structure Type: CGMPP
Features Intersected: BROOK
Maintenance: State

Bridge 38S:
Stringer/multi-beam or girder - 1966
Structure No. 200091039S14092
Length: 173'
Width: 30.0'
Under Clearance: 16.33'
Facility Carried: I 91 ML
Structure Type: 3 SP CONT GIRDER
Features Intersected: I 91 OVER US 5
Surface: Bituminous
Maintenance/Ownership: State

Bridge 40S:
Girder and floorbeam system - 1966
Structure No. 200091040S14092
Length: 316'
Width: 30.0'
Facility Carried: I 91 ML
Structure Type: 2 SP CONT WELDED GDR
Features Intersected: OTTAUQUECHEE RIVER
Surface: Bituminous
Maintenance/Ownership: State

Bridge D40:
Stringer/multi-beam or girder - 2008
Structure No. 2000910D4014082
Length: 168'
Facility Carried: QUARRY ROAD
Structure Type: WELDED GIRDER
Features Intersected: PRIVATE ROAD OVER I91

Culvert 40-3:
Culvert - 1966
Structure No. 30009140-314081
Length: 10'
Under Clearance: 11.0'
Facility Carried: I 91
Structure Type: CGMPP
Features Intersected: BROOK
Maintenance: State

Bridge 41S:
Stringer/multi-beam or girder - 1965
Structure No. 200091041S14082
Length: 99'
Width: 38.0'
Under Clearance: 16.33'
Facility Carried: I 91 ML
Structure Type: GIRDER
Features Intersected: I 91 OVER RAMP C I 91
Surface: Bituminous
Maintenance/Ownership: State

Bridge 42S:
Stringer/multi-beam or girder - 1965
Structure No. 200091042S14082
Length: 328'
Width: 42.0'
Under Clearance: 17.0'
Facility Carried: I 91 ML
Structure Type: 4 SP CONT ROLLED BM
Features Intersected: I 91 OVER I 89
Surface: Bituminous
Maintenance/Ownership: State

Culvert 42-1:
Culvert - 1966
Structure No. 30009142-114081
Length: 7'
Under Clearance: 7.0'
Facility Carried: I 91
Structure Type: CGMPP
Features Intersected: BROOK
Maintenance: State

Bridge 43S:
Stringer/multi-beam or girder - 2015
Structure No. 200091043S14082
Length: 136'
Width: 46.0'
Under Clearance: 17.58'
Facility Carried: I 91 ML
Structure Type: WELDED GIRDER
Features Intersected: I 91 OVER US 5
Surface: Concrete
Maintenance/Ownership: State

Historic Projects <ul style="list-style-type: none"> Unknown Bituminous Concrete Retreatment Resurface Bituminous Mix Skinny Mix Bituminous Seal 	Functional Class <ul style="list-style-type: none"> 1 - Interstate 2 - Other 3 - Principal Arterial 4 - Minor Arterial 5 - Major Collector 6 - Minor Collector 	Curves <ul style="list-style-type: none"> Left Right 	Road Widths <ul style="list-style-type: none"> (ft) 	Crash Locations <ul style="list-style-type: none"> Fatal Injury Property Damage Only Unknown Crash Type 	Mileage by Functional Class By Sheet 91-2 1 - Interstate 2,774 91-1 1 - Interstate 6,226	Mileage by Town By Sheet ETE - I091-0000S 9.0 of 177.432	DISTRICT 4	TOWN HARTFORD, HARTLAND	Date: 11/03/17	ROUTE I-91 ETE mileage: 63.0 to 72.0
---	--	--	--	---	---	--	----------------------	-----------------------------------	-----------------------	---