

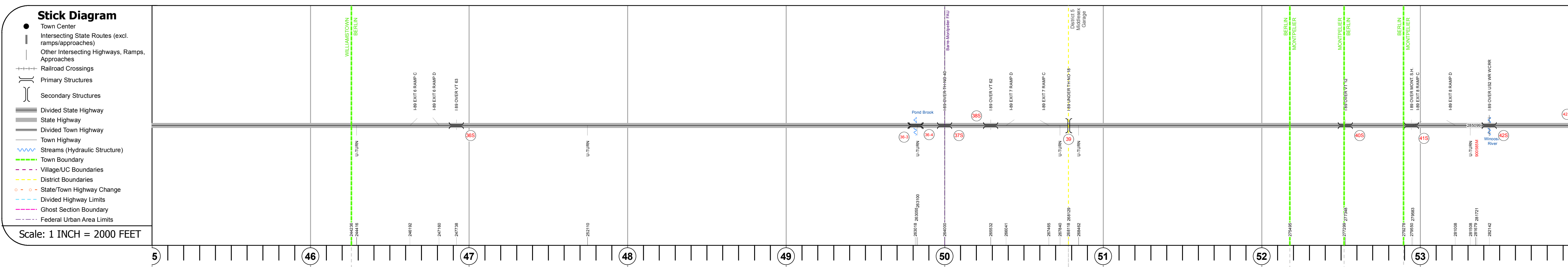
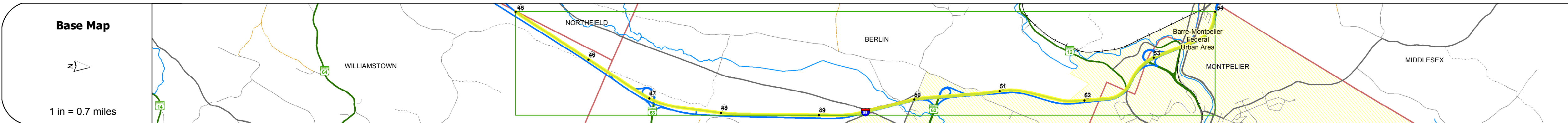
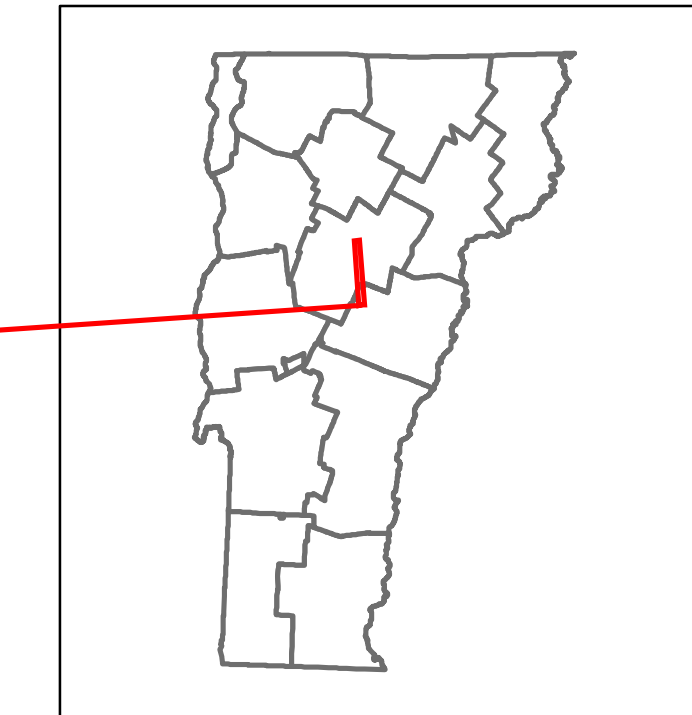


# Route Log and Progress Chart

**DRAFT**

Please Note: Errors and Omissions May Exist.  
Contact the VTrans Mapping Section with questions or concerns.

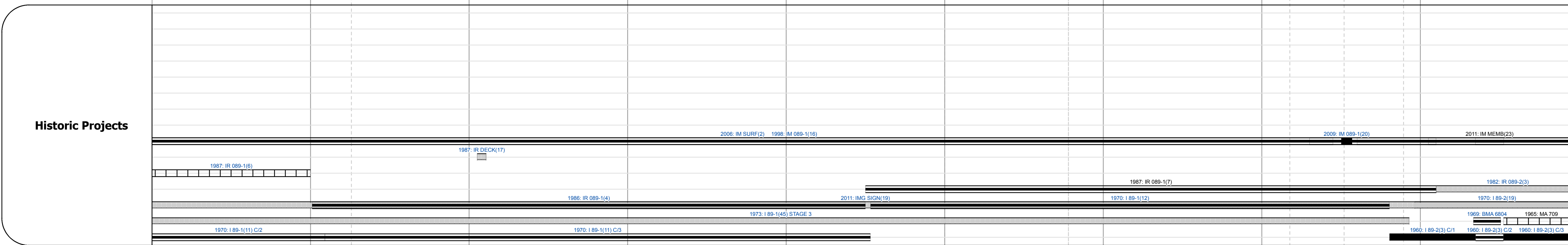
DISTRICT	TOWN	ROUTE
4, 5, 7	WILLIAMSTOWN, BERLIN, MONTPELIER	I-89



Road Widths	Travellane	Roadway	Lane Count	Base	Subbase
			24	2	9" Crushed Stone Base Course 24" Crushed Rock

Curves	
--------	--

Grades	-4.9	-4.2	-4.9	-5	-4	3.3
--------	------	------	------	----	----	-----



Maintenance Garage	District 4 - Williamstown Garage	District 5 - Middlesex Garage
--------------------	----------------------------------	-------------------------------

Speed Zone	
------------	--

Functional Class	1
------------------	---

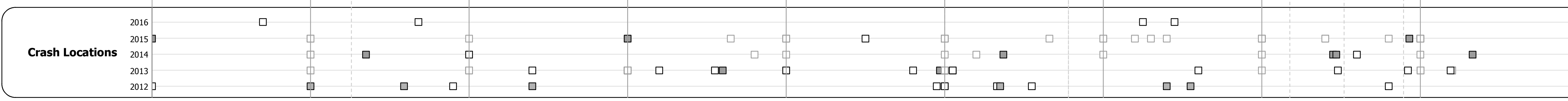
National Highway System	NHS - Interstate
-------------------------	------------------

Limited Access Highway	Full
------------------------	------

Traffic Counters	
------------------	--

Customer Service Level	Interstate Or Divided Highway
------------------------	-------------------------------

AAADT Counts	2016	2015	2014	2013	2012



### STRUCTURE DESCRIPTIONS

**Bridge 36S:**  
Stringer/multi-beam or girder - 1970  
Structure No. 200089036S12032  
Length: 174'  
Width: 39.6'  
Under Clearance: 14.25'  
Facility Carried: I 89 ML  
Structure Type: 2 SPN CONT STEEL BM  
Features Intersected: I 89 OVER VT 63  
Surface: Bituminous  
Maintenance/Ownership: State

**Culvert 36-3:**  
Culvert - 1970  
Structure No. 30008936-312031  
Length: 12'  
Under Clearance: 3.0'  
Facility Carried: I 89  
Structure Type: R C BOX  
Features Intersected: BERLIN POND OUTLET  
Maintenance: State

**Culvert 36-4:**  
Culvert - 1970  
Structure No. 30008936-412031  
Length: 9'  
Under Clearance: 7.0'  
Facility Carried: I 89  
Structure Type: R C BOX  
Features Intersected: WATER MAIN SLEEVE  
Maintenance: State

**Bridge 37S:**  
Stringer/multi-beam or girder - 1970  
Structure No. 200089037S12032  
Length: 122'  
Width: 38.0'  
Under Clearance: 14.5'  
Facility Carried: I 89 ML  
Structure Type: WELDED PLATE GIRDER  
Features Intersected: I 89 OVER TH NO 40  
Surface: Bituminous  
Maintenance/Ownership: State

**Bridge 38S:**  
Stringer/multi-beam or girder - 1970  
Structure No. 200089038S12032  
Length: 174'  
Width: 47.0'  
Under Clearance: 15.17'  
Facility Carried: I 89 ML  
Structure Type: 2 SPN CONT STEEL BM  
Features Intersected: I 89 OVER VT 62  
Surface: Bituminous  
Maintenance/Ownership: State

**Bridge 39:**  
Stringer/multi-beam or girder - 1970  
Structure No. 20120303912031  
Length: 230'  
Facility Carried: TR 18  
Structure Type: 2SPN CONT WLD PLT GI  
Features Intersected: I 89 UNDER TH NO 18

**Bridge 40S:**  
Stringer/multi-beam or girder - 1970  
Structure No. 200089040S12032  
Length: 448'  
Width: 39.0'  
Under Clearance: 64.0'  
Facility Carried: I 89 ML  
Structure Type: 3SPN WELDED PLT GIRD  
Features Intersected: I 89 OVER VT 12  
Maintenance/Ownership: State

**Bridge 41S:**  
Stringer/multi-beam or girder - 1960  
Structure No. 200089041S12112  
Length: 153'  
Width: 42.0'  
Under Clearance: 14.17'  
Facility Carried: I 89 ML  
Structure Type: 3 SPAN STEEL BEAM  
Features Intersected: I 89 OVER MONT. S.H.  
Surface: Bituminous  
Maintenance/Ownership: State

**Bridge 42S:**  
Stringer/multi-beam or girder - 1960  
Structure No. 200089042S12112  
Length: 955'  
Width: 31.5'  
Under Clearance: 22.0'  
Facility Carried: I 89 ML  
Structure Type: 13 SPN STEEL BEAM  
Features Intersected: I 89 OVER US2 WR WCRP  
Surface: Bituminous  
Maintenance/Ownership: State

**Culvert 42-1:**  
Culvert - 1960  
Structure No. 30008942-112111  
Length: 7'  
Under Clearance: 7.58'  
Facility Carried: I 89  
Structure Type: CGMPP  
Features Intersected: BROOK  
Maintenance: State

<b>Historic Projects</b> Unknown, Retreatment, Resurface, Bituminous Mix, Skiny Mix, Bituminous Seal Bituminous Concrete, Surface Treated Gravel, Plant Mix, Reclaimed Base and Bituminous Concrete	<b>Functional Class</b> 1- Interstate System, 2- Other, 3- Principal Arterial, 4- Minor Arterial, 5- Major Collector, 6- Minor Collector	<b>Curves</b> Left (segress), Right, Grades: grade up, grade down	<b>Road Widths</b> Traffic Counters (counter ID), AADT (count)	<b>Crash Locations</b> Fatal, Injury, Property Damage Only, Unknown Crash Type <b>High Crash Locations (HCL's)</b> HCL No. 201-300, 301-400, 401-800	<b>Mileage by Functional Class By Sheet</b> 89-2 1 - Interstate (4,000), 89-1 1 - Interstate (5,000)	<b>Mileage by Town By Sheet</b> ETE - I089-0000s (9.0 of 130.254)	<b>DISTRICT</b> 4, 5, 7	<b>TOWN</b> WILLIAMSTOWN, BERLIN, MONTPELIER	<b>Date:</b> 11/03/17 <b>6 of 15</b> TWN mileage: 45.0 to 54.0	<b>ROUTE</b> I-89 ETE mileage: 45.0 to 54.0
---	---	--	---	---	---	--	----------------------------	---	--	---

Page Total Mileage: 9.000 mi | Page Total Mileage: 9.0 mi