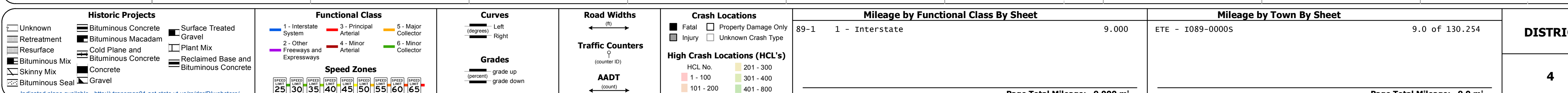
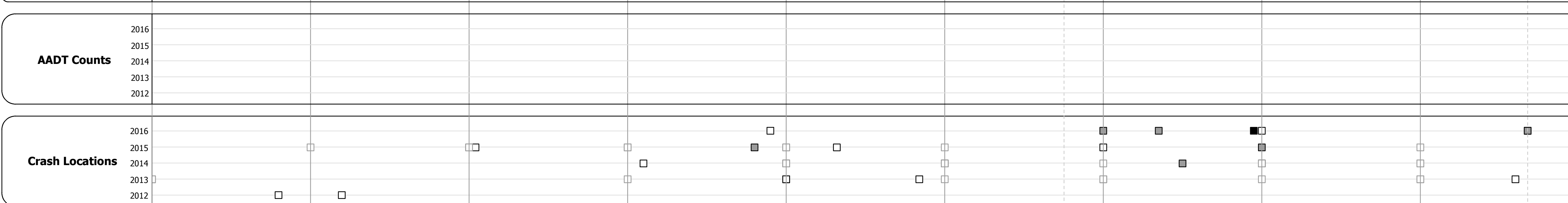
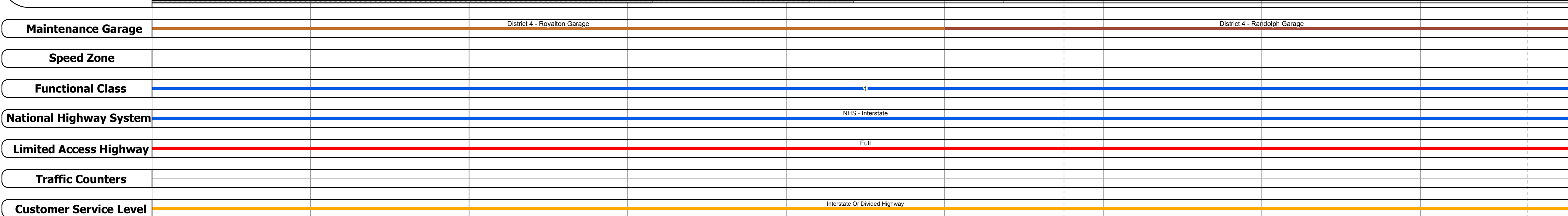
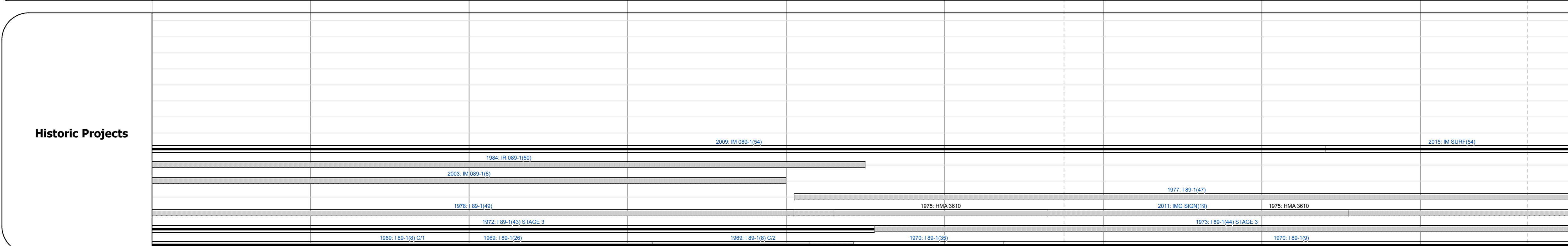
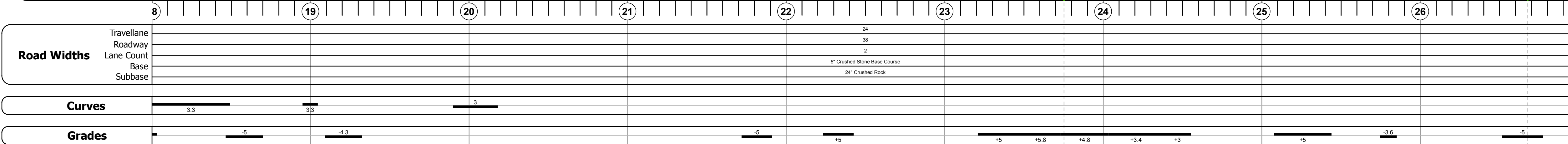
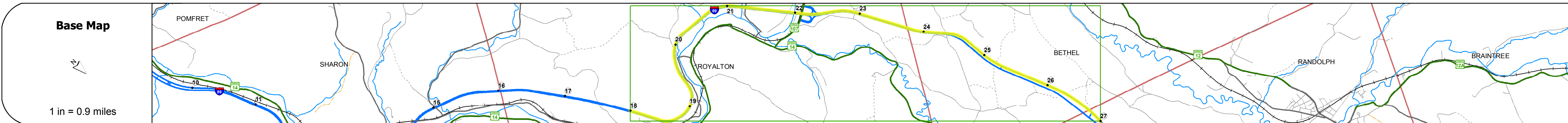
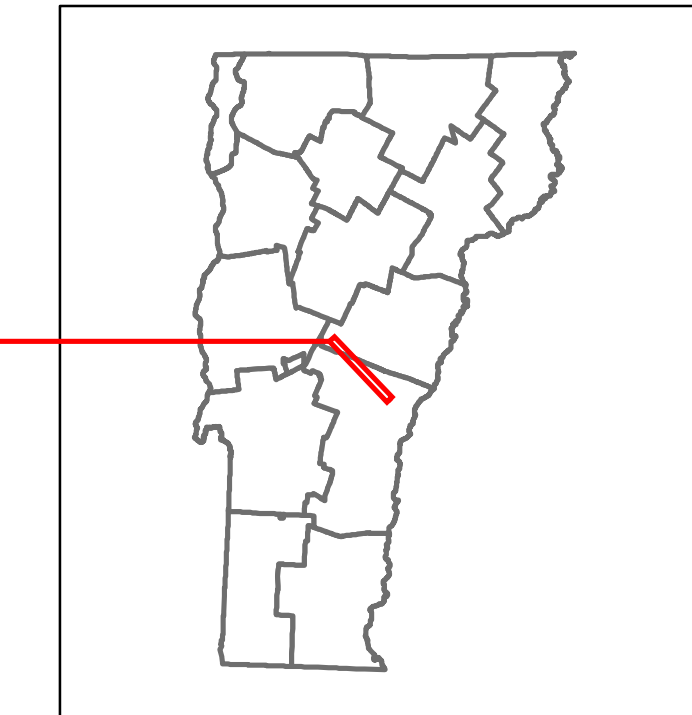


DISTRICT	TOWN	ROUTE
4	ROYALTON, BETHEL, RANDOLPH	I-89



STRUCTURE DESCRIPTIONS

<p>Culvert 22-1: Culvert - 1969 Structure No. 300089002214161 Length: 14' Under Clearance: 12.0' Facility Carried: I89 Structure Type: RC BOX Features Intersected: LAND ACCESS ROAD Maintenance: State</p>	<p>Bridge 26-2: Culvert - 1969 Structure No. 30008926-214161 Length: 6' Under Clearance: 6.0' Facility Carried: I89 Structure Type: CGMPP Features Intersected: BROOK Maintenance: State</p>
<p>Culvert 23: Culvert - 1968 Structure No. 200089002314162 Length: 21' Under Clearance: 14.08' Facility Carried: I 89 ML Structure Type: REF CONC BOX Features Intersected: I 89 OVER TH NO 36 Maintenance/Ownership: State</p>	<p>Bridge 27: Culvert - 1968 Structure No. 200089002714162 Length: 21' Under Clearance: 14.08' Facility Carried: I 89 ML Structure Type: REF CONC BOX Features Intersected: I 89 OVER TH NO 32 Maintenance/Ownership: State</p>
<p>Culvert 23-1: Culvert - 1969 Structure No. 30008923-114161 Length: 6' Under Clearance: 6.0' Facility Carried: I89 Structure Type: CGMPP Features Intersected: BROOK Maintenance: State</p>	<p>Bridge 28: Stringer/multi-beam or girder - 1968 Structure No. 20140402814041 Length: 251' Facility Carried: TR 06 Structure Type: 4 SP ROLLED BEAM Features Intersected: I 89 UNDER TH NO 6</p>
<p>Culvert 23-2: Culvert - 1969 Structure No. 30008923-214161 Length: 8' Under Clearance: 10.0' Facility Carried: I89 Structure Type: RC BOX Features Intersected: BROOK Maintenance: State</p>	
<p>Culvert 23-3: Culvert - 1969 Structure No. 30008923-314161 Length: 12' Under Clearance: 10.0' Facility Carried: I89 Structure Type: RC BOX Features Intersected: BROOK Maintenance: State</p>	
<p>Culvert 24: Culvert - 1968 Structure No. 200089002414162 Length: 21' Under Clearance: 14.08' Facility Carried: I 89 ML Structure Type: REF CONC BOX Features Intersected: I 89 OVER TH NO 6 Maintenance/Ownership: State</p>	
<p>Culvert 24-1: Culvert - 1969 Structure No. 30008924-114161 Length: 10' Under Clearance: 6.42' Facility Carried: I89 Structure Type: RC BOX Features Intersected: CATTLE PASS Maintenance: State</p>	
<p>Culvert 25: Culvert - 1968 Structure No. 200089002514162 Length: 21' Under Clearance: 14.08' Facility Carried: I 89 ML Structure Type: REF CONC BOX Features Intersected: I 89 OVER TH NO 35 Maintenance/Ownership: State</p>	
<p>Bridge 26S: Stringer/multi-beam or girder - 1968 Structure No. 200089026S14162 Length: 917' Width: 30.0' Under Clearance: 16.5' Facility Carried: I 89 ML Structure Type: 6 SP CONT GIRDER Features Intersected: I 89 OVER WR+NECR+107 Surface: Bituminous Maintenance/Ownership: State</p>	
<p>Culvert 26-1: Culvert - 1969 Structure No. 30008926-114161 Length: 6' Under Clearance: 6.0' Facility Carried: I89 Structure Type: CGMPP Features Intersected: BROOK Maintenance: State</p>	