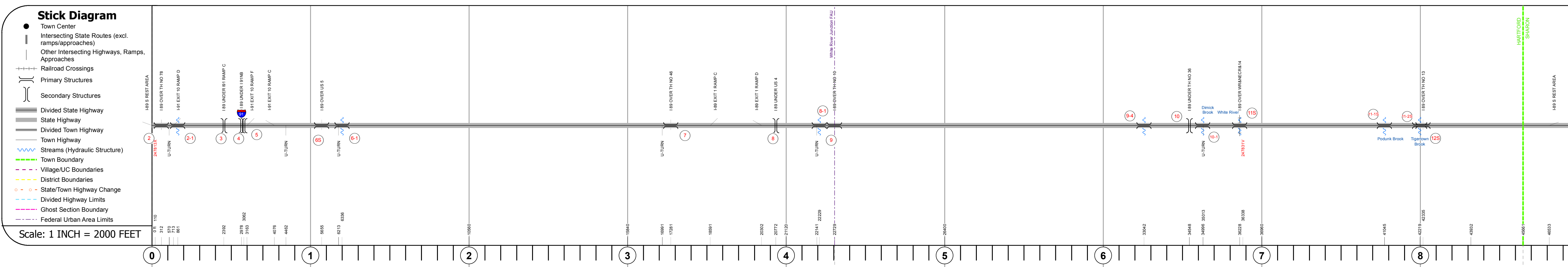
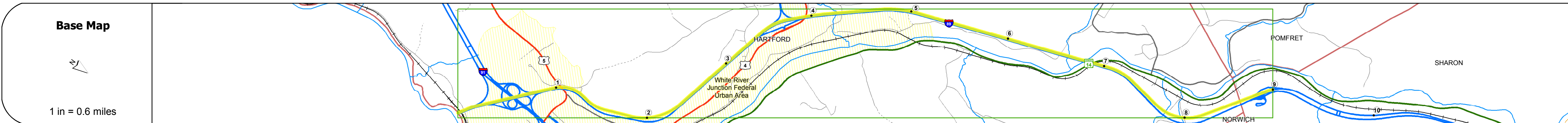
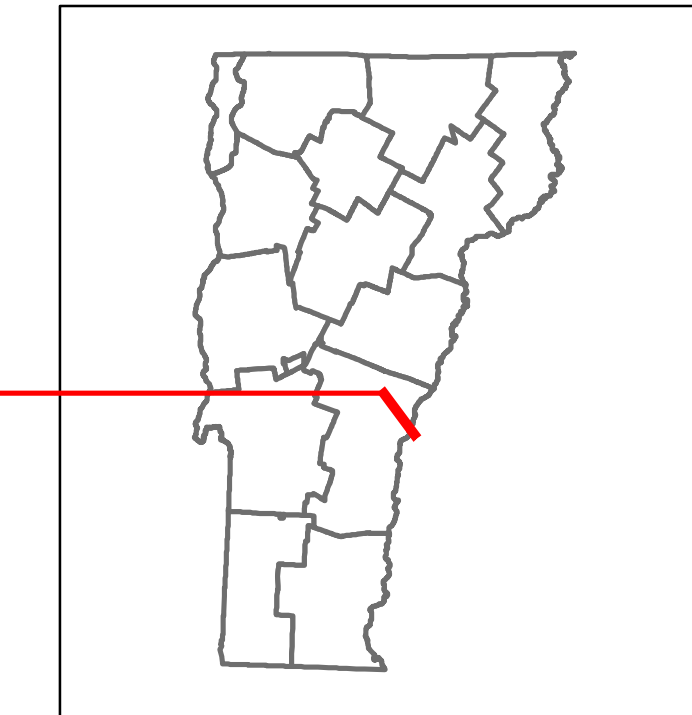


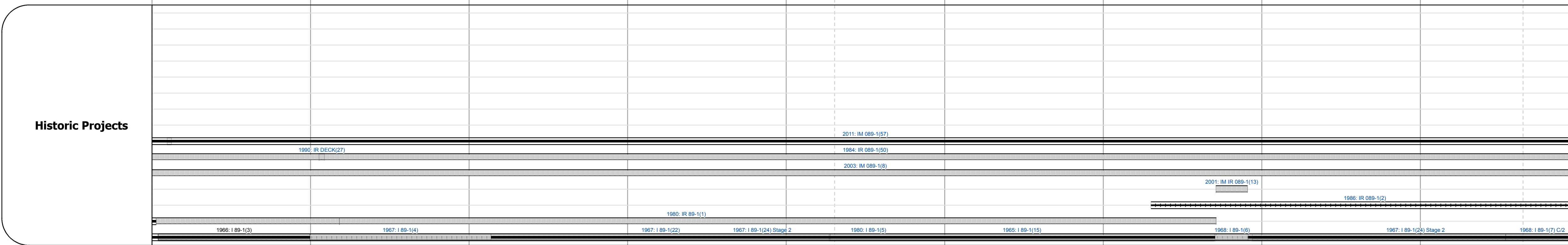
DISTRICT	TOWN	ROUTE
4	SHARON, HARTFORD	I-89



Road Widths	Travellane	Roadway	Lane Count	Base	Subbase

Curves	
--------	--

Grades	+5	+3.2	-3.5	+5	-5	-3	-4	+4.5
--------	----	------	------	----	----	----	----	------



Maintenance Garage	District 4 - White River Garage
--------------------	---------------------------------

Speed Zone	55
------------	----

Functional Class	1
------------------	---

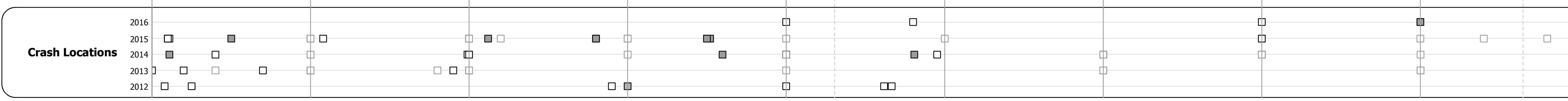
National Highway System	NHS - Interstate
-------------------------	------------------

Limited Access Highway	Full
------------------------	------

Traffic Counters	
------------------	--

Customer Service Level	Interstate Or Divided Highway
------------------------	-------------------------------

AAADT Counts	2016	2015	2014	2013	2012
--------------	------	------	------	------	------



### STRUCTURE DESCRIPTIONS

**Culvert 2:**  
Culvert - 1965  
Structure No. 20008900214082  
Length: 21'  
Under Clearance: 13.92'  
Facility Carried: I 89 ML  
Structure Type: R C BOX  
Features Intersected: I 89 OVER TH NO 78  
Maintenance/Ownership: State

**Culvert 2-1:**  
Culvert - 1966  
Structure No. 30008902-114081  
Length: 6'  
Under Clearance: 6.17'  
Facility Carried: I89  
Structure Type: MULTIPLATE PIPE  
Features Intersected: BROOK  
Maintenance: State

**Bridge 3:**  
Stringer/multi-beam or girder - 1965  
Structure No. 200091041C14082  
Length: 196'  
Facility Carried: I 89 RAMP  
Structure Type: 2 SP WELDED PL GDR  
Features Intersected: I 89 UNDER I 91 RAMP C

**Bridge 4:**  
Stringer/multi-beam or girder - 1965  
Structure No. 200091042N14082  
Length: 346'  
Facility Carried: I 91 ML  
Structure Type: 4 SP CONT ROLLED BM  
Features Intersected: I 89 UNDER I 91NB

**Bridge 5:**  
Stringer/multi-beam or girder - 1965  
Structure No. 200091042S14082  
Length: 326'  
Facility Carried: I 91 ML  
Structure Type: 4 SP CONT ROLLED BM  
Features Intersected: I 89 UNDER I 91SB

**Bridge 6S:**  
Stringer/multi-beam or girder - 1966  
Structure No. 200089006S14082  
Length: 167'  
Width: 38.0'  
Under Clearance: 15.92'  
Facility Carried: I 89 ML  
Structure Type: 3 SP ROLLED BEAM  
Features Intersected: I 89 OVER US 5  
Surface: Bituminous  
Maintenance/Ownership: State

**Culvert 6-1:**  
Culvert - 1967  
Structure No. 30008906-114081  
Length: 6'  
Under Clearance: 4.5'  
Facility Carried: I89  
Structure Type: CGMPPA  
Features Intersected: BROOK  
Maintenance: State

**Culvert 7:**  
Culvert - 1967  
Structure No. 20008900714082  
Length: 27'  
Under Clearance: 13.83'  
Facility Carried: I 89 ML  
Structure Type: REF CONC BOX  
Features Intersected: I 89 OVER TH NO 46  
Maintenance/Ownership: State

**Bridge 8:**  
Stringer/multi-beam or girder - 1967  
Structure No. 200020065A14082  
Length: 311'  
Facility Carried: US 04 ML  
Structure Type: 4 SP ROLLED BEAM  
Features Intersected: I 89 UNDER US 4

**Culvert 8-1:**  
Culvert - 1967  
Structure No. 30008908-114081  
Length: 7'  
Under Clearance: 7.5'  
Facility Carried: I89  
Structure Type: CGMPPP  
Features Intersected: BROOK  
Maintenance: State

**Culvert 9:**  
Culvert - 1967  
Structure No. 200089000914082  
Length: 21'  
Under Clearance: 14.0'  
Facility Carried: I 89 ML  
Structure Type: CONCRETE BOX  
Features Intersected: I 89 OVER TH NO 10  
Maintenance/Ownership: State

**Bridge 9-4:**  
Culvert - 1967  
Structure No. 30008909-414081  
Length: 6'  
Under Clearance: 7.0'  
Facility Carried: I89  
Structure Type: CGMPP  
Features Intersected: BROOK  
Maintenance: State

**Bridge 10:**  
Stringer/multi-beam or girder - 1967  
Structure No. 2014080D1014081  
Length: 204'  
Under Clearance: 6.17'  
Facility Carried: TR 36  
Structure Type: 2 SP CONT WELDED GIR  
Features Intersected: I 89 UNDER TH NO 36

**Bridge 10-1:**  
Culvert - 1967  
Structure No. 30008910-114081  
Length: 10'  
Under Clearance: 11.0'  
Facility Carried: I89  
Structure Type: CGMPP  
Features Intersected: BROOK  
Maintenance: State

**Bridge 11S:**  
Stringer/multi-beam or girder - 1967  
Structure No. 200089011S14082  
Length: 1059'  
Width: 32.0'  
Under Clearance: 18.08'  
Facility Carried: I 89 ML  
Structure Type: 6 SP CONT GIRDERS  
Features Intersected: I 89 OVER WR+NECR+14  
Surface: Bituminous  
Maintenance/Ownership: State

**Bridge 11-1S:**  
Culvert - 1968  
Structure No. 30008911S14081  
Length: 10'  
Under Clearance: 8.0'  
Facility Carried: I89  
Structure Type: RC BOX  
Features Intersected: PODUNK BROOK  
Maintenance: State

**Bridge 11-2S:**  
Culvert - 1968  
Structure No. 300089112S14081  
Length: 9'  
Under Clearance: 9.0'  
Facility Carried: I89  
Structure Type: CGMPP  
Features Intersected: TIGERTOWN BROOK  
Maintenance: State

**Bridge 12S:**  
Culvert - 1968  
Structure No. 200089012S14082  
Length: 21'  
Under Clearance: 14.08'  
Facility Carried: I 89 ML  
Structure Type: REF CONC BOX  
Features Intersected: I 89 OVER TH NO 13  
Maintenance/Ownership: State

<b>Historic Projects</b> <ul style="list-style-type: none"> <li>Unknown</li> <li>Retreatment</li> <li>Resurface</li> <li>Bituminous Mix</li> <li>Skinny Mix</li> <li>Bituminous Seal</li> </ul>	<b>Functional Class</b> <ul style="list-style-type: none"> <li>1 - Interstate System</li> <li>2 - Other Freeways and Expressways</li> <li>3 - Principal Arterial</li> <li>4 - Minor Arterial</li> <li>5 - Major Collector</li> <li>6 - Minor Collector</li> </ul>	<b>Curves</b> <ul style="list-style-type: none"> <li>Left (degrees)</li> <li>Right</li> </ul>	<b>Road Widths</b> (ft) Traffic Counters (counter ID) AADT (count)	<b>Crash Locations</b> Fatal Injury Property Damage Only Unknown Crash Type	<b>Mileage by Functional Class By Sheet</b> 89-1 1 - Interstate 9.000	<b>Mileage by Town By Sheet</b> ETE - I089-0000S 9.0 of 130.254	<b>DISTRICT</b> 4	<b>TOWN</b> SHARON, HARTFORD	<b>Date:</b> 11/03/17 <b>1 of 15 TWN mileages:</b> 0.0 to 9.0	<b>ROUTE</b> I-89 ETE mileage: 0.0 to 9.0
--	--	--	---	---	--	--	----------------------	---------------------------------	--	---

Page Total Mileage: 9.000 mi