

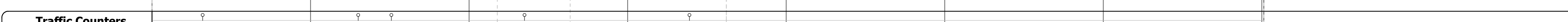
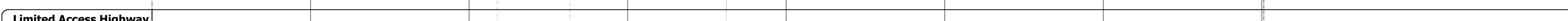
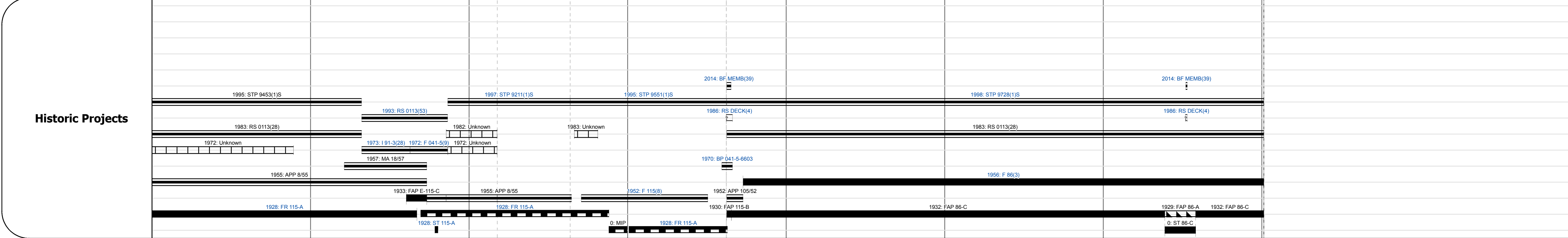
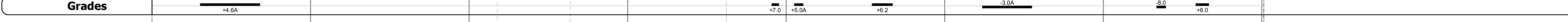
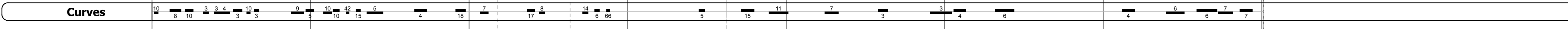
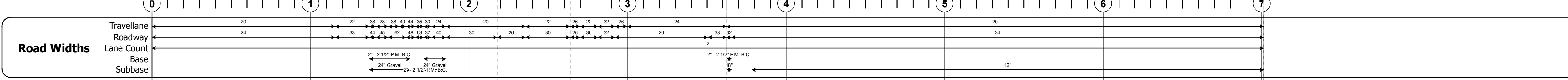
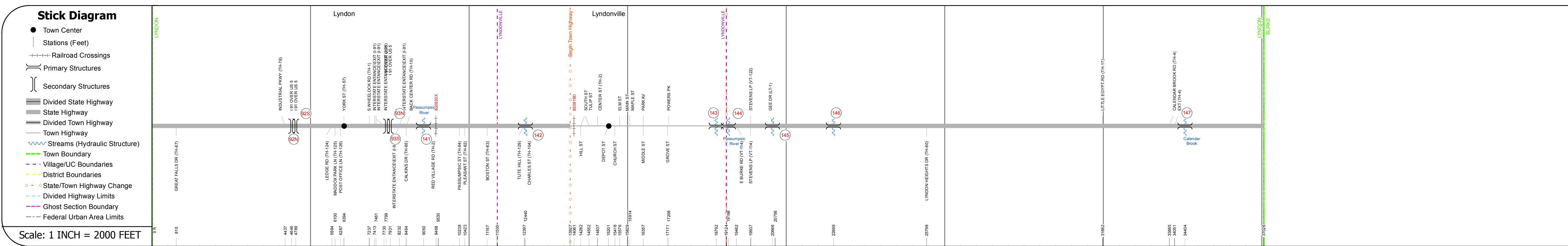
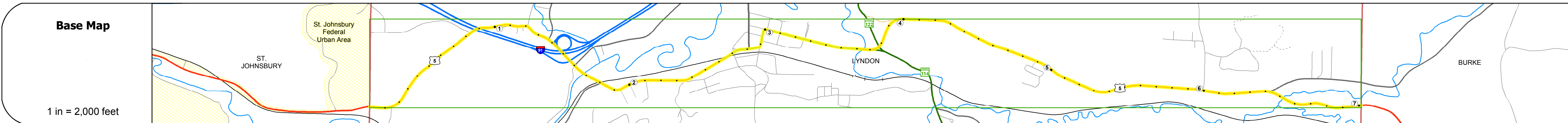
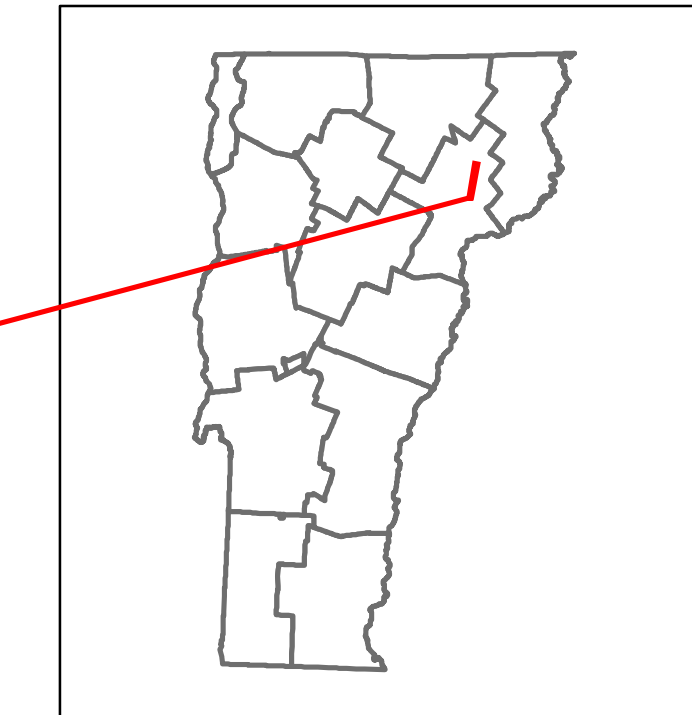


Route Log and Progress Chart

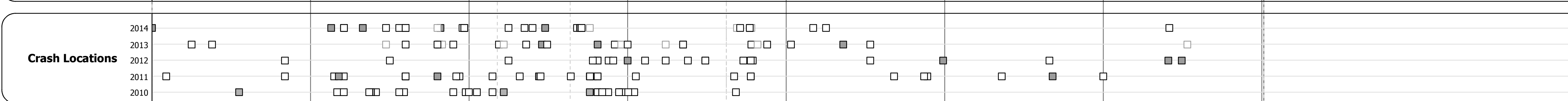
DRAFT

Please Note: Errors and Omissions May Exist.
Contact the VTrans Mapping Section with questions or concerns.

DISTRICT	TOWN	ROUTE
7	LYNDON	US-5



Year	Station 0-1	Station 1-2	Station 2-3	Station 3-4	Station 4-5	Station 5-6	Station 6-7
2014	4300	5900	10400	12300	13200	10800	10200
2013	4500	5900	10400	12300	13300	10300	10300
2012	4600	5900	10500	12400	13300	9700	10300
2011	4700	6500	10500	12300	13200	9800	9900
2010	4700	7000	10400	12200	13100	9400	9500



STRUCTURE DESCRIPTIONS

<p>Bridge 92N: Stringer/multi-beam or girder - 1974 Structure No. 200091092N03072 Length: 221' Width: 39.4' Under Clearance: 28.33' Facility Carried: 1 00091 ML Bridge Type: 2 SP CONT WLD PL GIR Features Intersected: 1 91 OVER US 5 Surface: Bituminous Maintenance/Ownership: State</p>	<p>Bridge 147: Stringer/multi-beam or girder - 1956 Structure No. 200113014703072 Length: 54' Width: 30.7' Under Clearance: US 00005 ML Bridge Type: ROLLED BEAM Features Intersected: CALEDAR BROOK Surface: Bituminous Maintenance/Ownership: State</p>
<p>Bridge 92S: Stringer/multi-beam or girder - 1974 Structure No. 200091092S03072 Length: 288' Width: 39.6' Under Clearance: 27.25' Facility Carried: 1 00091 ML Bridge Type: 2 SP CONT WLD PL GIR Features Intersected: 1 91 OVER US 5 Surface: Bituminous Maintenance/Ownership: State</p>	<p>Bridge 93S: Stringer/multi-beam or girder - 1974 Structure No. 200091093S03072 Length: 114' Width: 45.0' Under Clearance: 14.25' Facility Carried: 1 00091 ML Bridge Type: WELDED PLATE GIRDER Features Intersected: 1 91 OVER US 5 Surface: Bituminous Maintenance/Ownership: State</p>
<p>Bridge 93N: Stringer/multi-beam or girder - 1974 Structure No. 200091093N03072 Length: 111' Width: 39.5' Under Clearance: 14.67' Facility Carried: 1 00091 ML Bridge Type: WELDED PLATE GIRDER Features Intersected: 1 91 OVER US 5 Surface: Bituminous Maintenance/Ownership: State</p>	<p>Bridge 141: Stringer/multi-beam or girder - 1972 Structure No. 200113014103072 Length: 172' Width: 52.0' Facility Carried: US 00005 ML Bridge Type: 2SPN CON CURV RLDBM Features Intersected: PASSUMPSIC RIVER Surface: Bituminous Maintenance/Ownership: State</p>
<p>Culvert 142: Culvert - 1946 Structure No. 300113014203071 Length: 8' Under Clearance: 2.5' Facility Carried: US5 Bridge Type: R.C. BOX Features Intersected: BROOK Maintenance: State</p>	<p>Culvert 143: Culvert - 1970 Structure No. 300113014303071 Length: 40' Under Clearance: 4.0' Facility Carried: US5 Bridge Type: A.C.C.G.M.P.P. Features Intersected: RELIEF STRUCTURE Maintenance: State</p>
<p>Bridge 144: Stringer/multi-beam or girder - 1930 Structure No. 200113014403072 Length: 147' Width: 50.5' Facility Carried: US 00005 ML Bridge Type: 3 SPAN ROLLED BEAM Features Intersected: PASSUMPSIC RIVER Surface: Bituminous Maintenance/Ownership: State</p>	<p>Culvert 145: Culvert - 1932 Structure No. 300113014503071 Length: 8' Under Clearance: 5.0' Facility Carried: US5 Bridge Type: R.C. BOX Features Intersected: BROOK Maintenance: State</p>
<p>Culvert 146: Culvert - 1932 Structure No. 300113014603071 Length: 8' Under Clearance: 5.0' Facility Carried: US5 Bridge Type: R.C. BOX Features Intersected: BROOK Maintenance: State</p>	

<p>Historic Projects</p> <ul style="list-style-type: none"> Unknown Retreatment Resurface Bituminous Mix Skinny Mix Bituminous Seal <p>Surface Treated</p> <ul style="list-style-type: none"> Gravel Plant Mix Reclaimed Base and Bituminous Concrete <p>Speed Zones</p> <p>25 30 35 40 45 50 55 60 65</p>	<p>Functional Class</p> <ul style="list-style-type: none"> 1 - Interstate System 2 - Other Freeways and Expressways 3 - Principal Arterial 4 - Minor Arterial 5 - Major Collector 6 - Minor Collector <p>Curves</p> <ul style="list-style-type: none"> Left (segress) Right <p>Grades</p> <ul style="list-style-type: none"> grade up grade down 	<p>Road Widths</p> <p>(ft)</p> <p>Traffic Counters</p> <p>(counter ID)</p> <p>Crash Locations</p> <ul style="list-style-type: none"> Fatal Injury Property Damage Only Unknown Crash Type 	<p>AADT</p> <p>(count)</p>	<p>Mileage by Functional Class By Sheet</p> <p>0113 5 - Major collector 7.012</p>	<p>Mileage by Town By Sheet</p> <p>LYNDON - U005-0307 7.012 of 7.012</p>	<p>DISTRICT</p> <p>7</p>	<p>TOWN</p> <p>LYNDON</p>	<p>Date: 11/14/16</p> <p>1 of 1</p> <p>TWN mileage: 0.0 to 7.012</p>	<p>ROUTE</p> <p>US-5</p> <p>ETE mileage: 143.41 to 150.422</p>
--	---	--	-----------------------------------	--	---	---------------------------------	----------------------------------	---	--

Page Total Mileage: 7.012 mi