

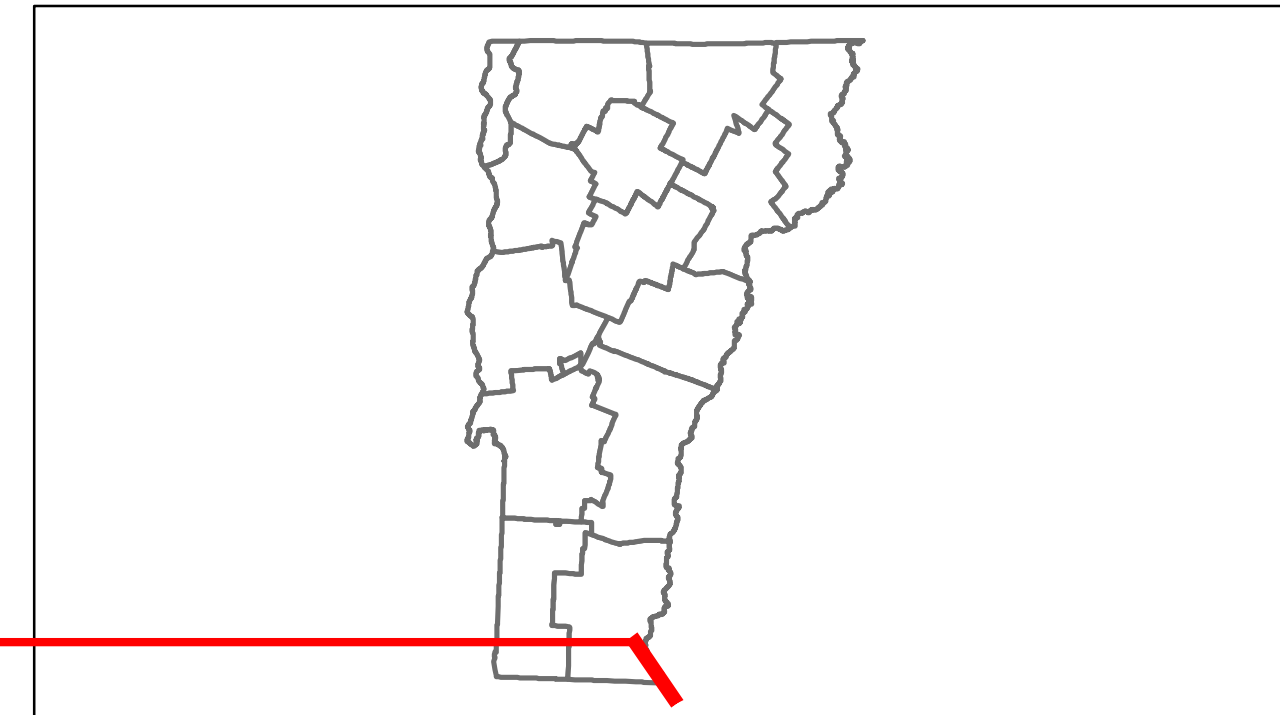


# Route Log Progress Chart

**DRAFT**

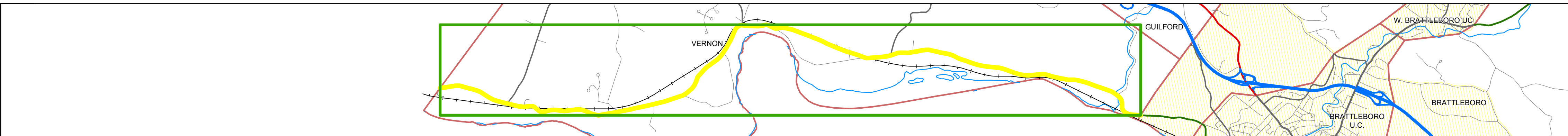
Please Note: Errors and Omissions May Exist.  
Contact the VTrans Mapping Unit with questions or concerns.

DISTRICT	TOWN	ROUTE
2	VERNON	VT-142



**Base Map**

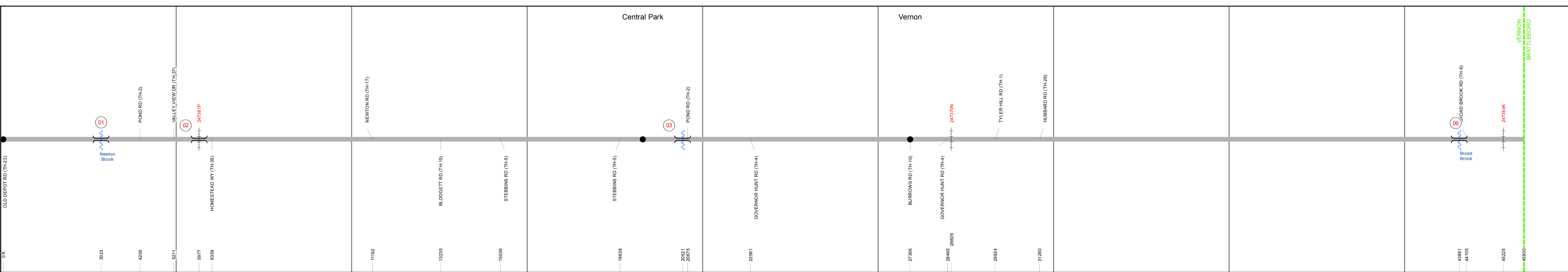
1 in = 0.75 miles



**Stick Diagram**

- Town Boundary
- Village/UC Boundaries
- District Boundaries
- State/Town Highway Change
- Divided Highway Limits
- Ghost Section Boundary
- FAU Limits
- Streams
- Town Center
- Primary Structures
- Secondary Structures
- Stations (Feet)
- Railroad Crossings
- Divided State Highway
- State Highway
- Divided Class 1 Town Highway
- Class 1 Town Highway

Scale: 1in = 2000 FEET



## DESCRIPTION BLOCK

**Culvert 1:**  
Culvert - 1919  
Structure No. 300109000113181  
Length: 10'  
Under Clearance: 5.0'  
Facility Carried: VT142  
Bridge Type: RC BOX  
Features Intersected: BROOK  
Maintenance: State

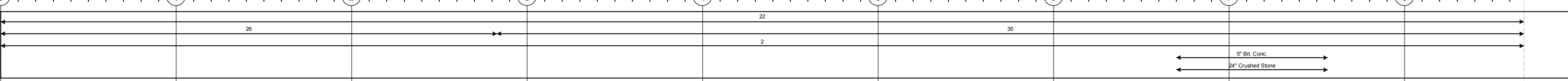
**Bridge 2:**  
Stringer/multi-beam or girder - 1936  
Structure No. 200109000213182  
Length: 48'  
Height: 0.0'  
Facility Carried: RAILROAD  
Bridge Type: ROLLED BEAM  
Features Intersected: N.E.C.R.R. OVER VT 142

**Culvert 3:**  
Culvert - 1955  
Structure No. 300109000313181  
Length: 10'  
Under Clearance: 10.0'  
Facility Carried: VT142  
Bridge Type: MULTI PLATE ARCH  
Features Intersected: BROOK  
Maintenance: State

**Bridge 6:**  
Stringer/multi-beam or girder - 1930  
Structure No. 200109000613182  
Length: 98'  
Width: 22.4'  
Facility Carried: VT 00142 ML  
Bridge Type: (2) SPAN ROLLED BEAM  
Features Intersected: BROAD BROOK  
Surface: Bituminous  
Maintenance/Ownership: State

**Road Widths**

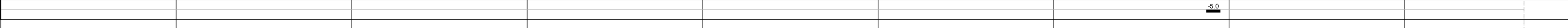
Travellane  
Roadway  
Lane Count  
Base  
Subbase



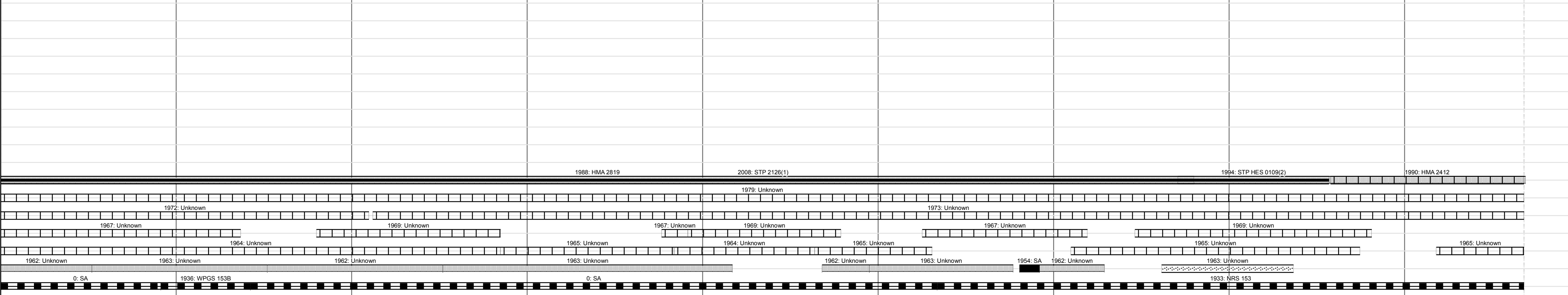
**Curves**



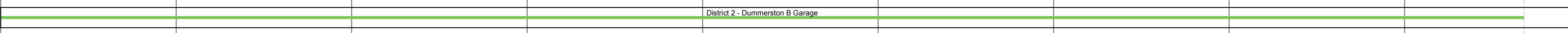
**Grades**



**Historic Projects**



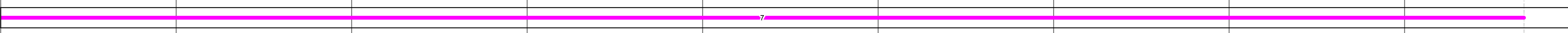
**Maintenance Garage**



**Traffic Counters**



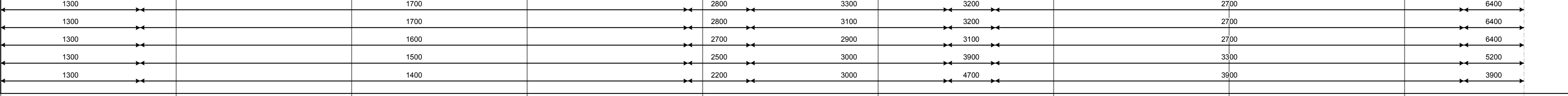
**Functional Class**



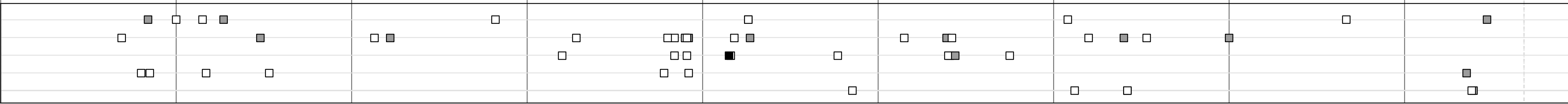
**Speed Zone**



**AADT Counts**



**Crash Locations**



<b>Historic Projects</b> Retreatment, Resurface, Bituminous, Unknown, Bituminous Mix, Skimmy Mix, Bituminous Seal, Concrete, Gravel, Surface Treated Gravel, Plant Mix, Reclaimed Base and Bituminous Concrete, Concrete	<b>Functional Class</b> 1, 2, 3, 4, 5, 6, 7, 8, 9, 10, 11, 12, 13, 14, 15, 16, 17, 18, 19	<b>Curves</b> curve left, curve right	<b>Road Widths</b> (ft)	<b>Traffic Counters</b> (counter ID)	<b>Crash Locations</b> Fatal, Injury, Property Damage Only, Unknown Crash Type	<b>Mileage by Functional Class By Sheet</b> 0109 7 - Rural - Major collector 8.680	<b>Mileage by Town By Sheet</b> VERNON - v142-1318 8.68 of 8.68	<b>DISTRICT</b> 2	<b>TOWN</b> VERNON	<b>Date:</b> 04/02/14	<b>ROUTE</b> VT-142 ETE mileage: 0.0 to 8.68
						<b>Total Mileage: 8.680 mi</b>					