

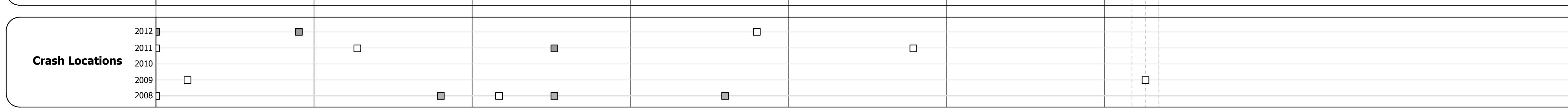
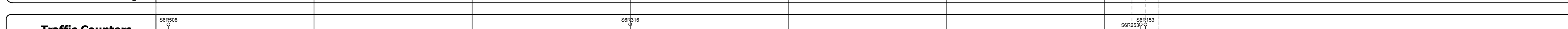
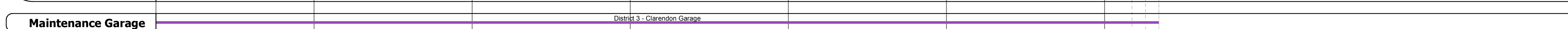
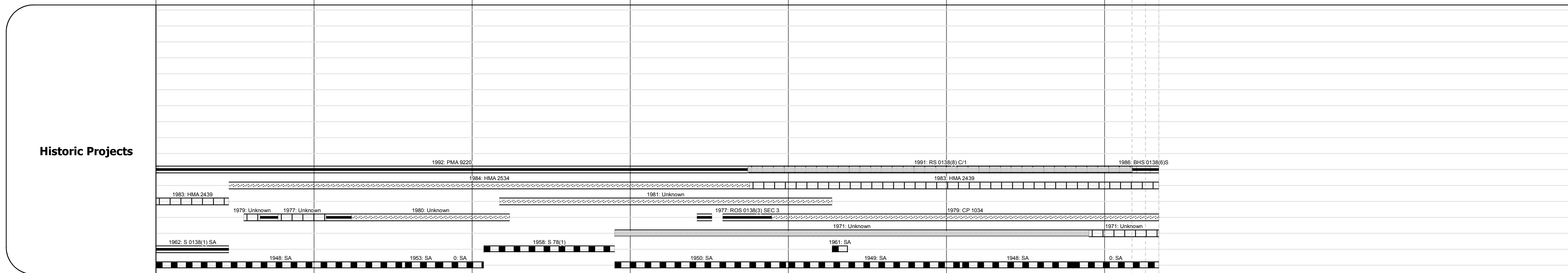
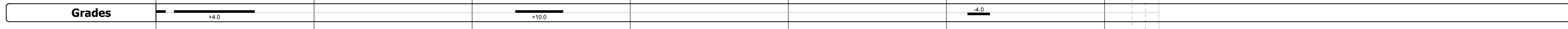
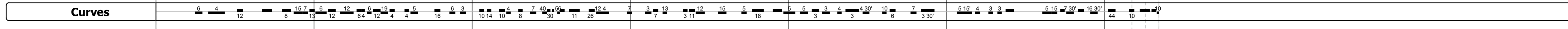
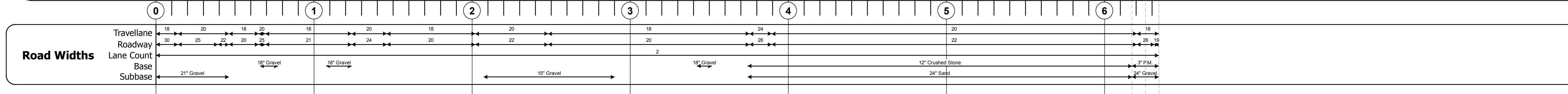
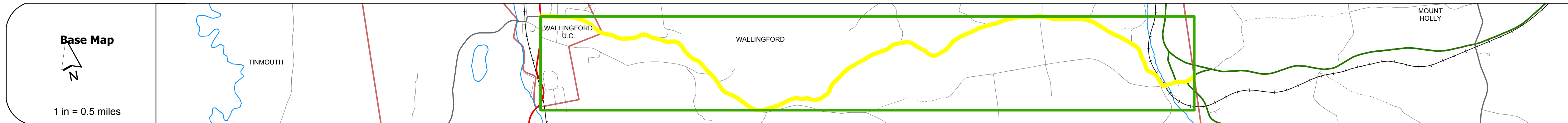
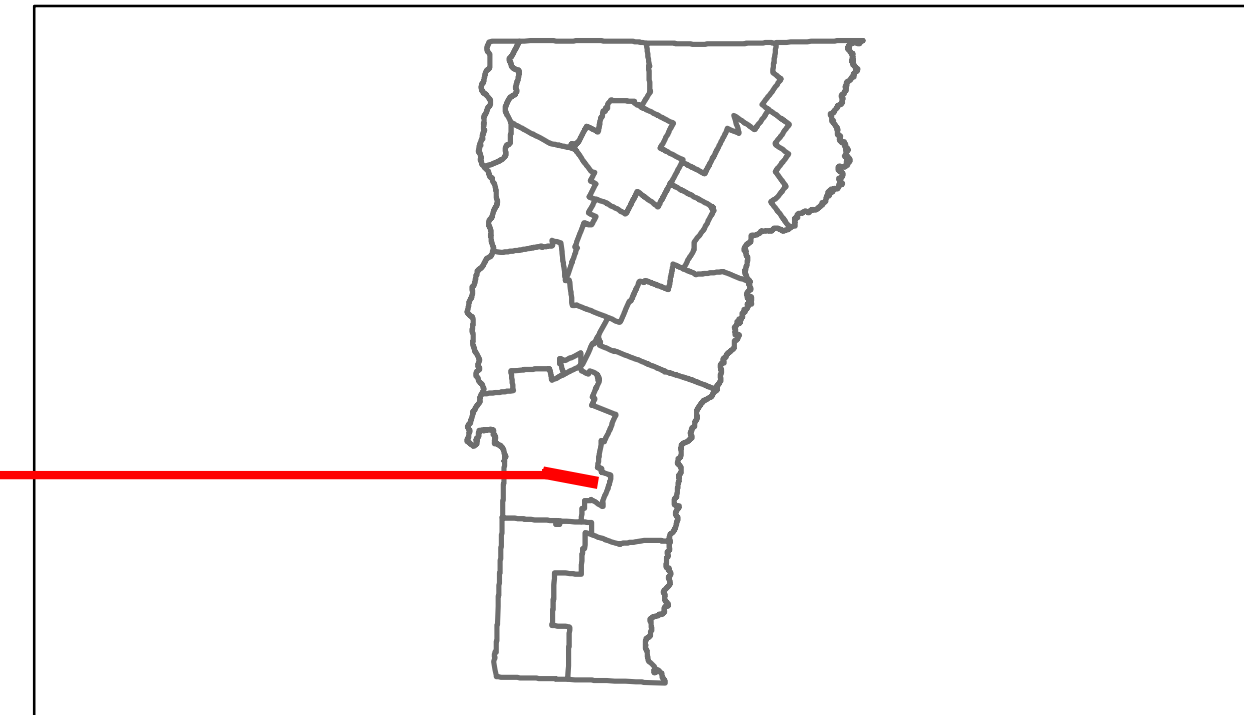


Route Log Progress Chart

DRAFT

Please Note: Errors and Omissions May Exist.
Contact the VTrans Mapping Unit with questions or concerns.

DISTRICT	TOWN	ROUTE
3	WALLINGFORD	VT-140



DESCRIPTION BLOCK	
<p>Bridge 2: Slab - 1948 Structure No. 300138000211251 Length: 22' Width: 24.0' Under Clearance: 11.0' Facility Carried: VT 140 Bridge Type: CONCRETE SLAB Features Intersected: ROARING BROOK Surface: Bituminous Maintenance: State</p>	<p>Bridge 3: Slab - 1927 Structure No. 300138000311251 Length: 21' Width: 20.0' Under Clearance: 4.0' Facility Carried: VT140 Bridge Type: CONCRETE SLAB Features Intersected: ROARING BROOK Surface: Bituminous Maintenance: State</p> <p>Bridge 4: Slab - 1929 Structure No. 300138000411251 Length: 21' Width: 24.0' Under Clearance: 6.5' Facility Carried: VT140 Bridge Type: CONCRETE SLAB Features Intersected: ROARING BROOK Surface: Bituminous Maintenance: State</p> <p>Bridge 5: Slab - 1918 Structure No. 300138000511251 Length: 11' Width: 24.0' Under Clearance: 3.0' Facility Carried: VT140 Bridge Type: CONCRETE SLAB Features Intersected: BROOK Surface: Bituminous Maintenance: State</p> <p>Culvert 7: Culvert - 1992 Structure No. 300138000711251 Length: 7' Under Clearance: 4.42' Facility Carried: VT140 Bridge Type: ALUMINUM PIPE ARCH Features Intersected: ROARING BROOK Maintenance: State</p> <p>Culvert 8: Culvert - 1992 Structure No. 300138000811251 Length: 8' Under Clearance: 5.25' Facility Carried: VT140 Bridge Type: ALUM. PIPE ARCH Features Intersected: BROOK Maintenance: State</p> <p>Culvert 9: Culvert - 1992 Structure No. 300138000911251 Length: 8' Under Clearance: 5.33' Facility Carried: VT140 Bridge Type: ALUM. PIPE ARCH Features Intersected: BROOK Maintenance: State</p> <p>Bridge 10: Stringer/multi-beam or girder - 1986 Structure No. 200138001011252 Length: 118' Width: 32.7' Facility Carried: VT 00140 ML Bridge Type: 2 SP CONT STEEL BEAM Features Intersected: MILL RIVER Surface: Bituminous Maintenance/Ownership: State</p> <p>Bridge 11: Tee Beam - 1928 Structure No. 200138001111252 Length: 41' Width: 33.0' Facility Carried: VT 00140 ML Bridge Type: TBEAM WIDE W SLAB Features Intersected: BROOK Surface: Bituminous Maintenance/Ownership: State</p>

Historic Projects	Functional Class	Curves	Road Widths	AADT	Mileage by Functional Class By Sheet	Mileage by Town By Sheet	DISTRICT	TOWN	Date: 04/02/14	ROUTE
<ul style="list-style-type: none"> Retreatment Resurface Unknown Bituminous Mix Skimny Mix Bituminous Seal Gravel Surface Treated Gravel Plant Mix Reclaimed Base and Bituminous Concrete Concrete 	<ul style="list-style-type: none"> 1 2 6 7 8 11 12 14 16 17 19 	<ul style="list-style-type: none"> curve left curve right 	<ul style="list-style-type: none"> (ft) 	<ul style="list-style-type: none"> (count) 	0138 7 - Rural - Major collector 6.343	WALLINGFORD - V140-1125 6.343 of 6.343	3	WALLINGFORD	1 of 1 TWN mileage: 0.0 to 6.343	VT-140 ETE mileage: 0.0 to 6.343
Total Mileage: 6.343 mi						Total Mileage: 6.343 mi				