

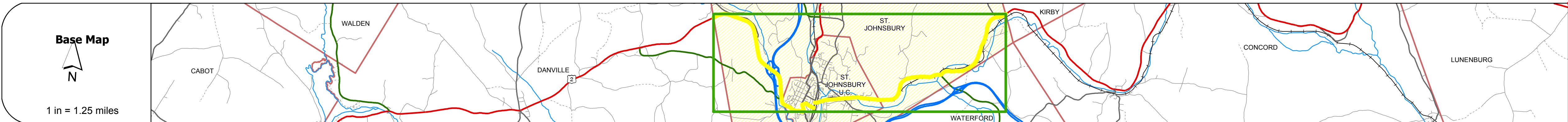
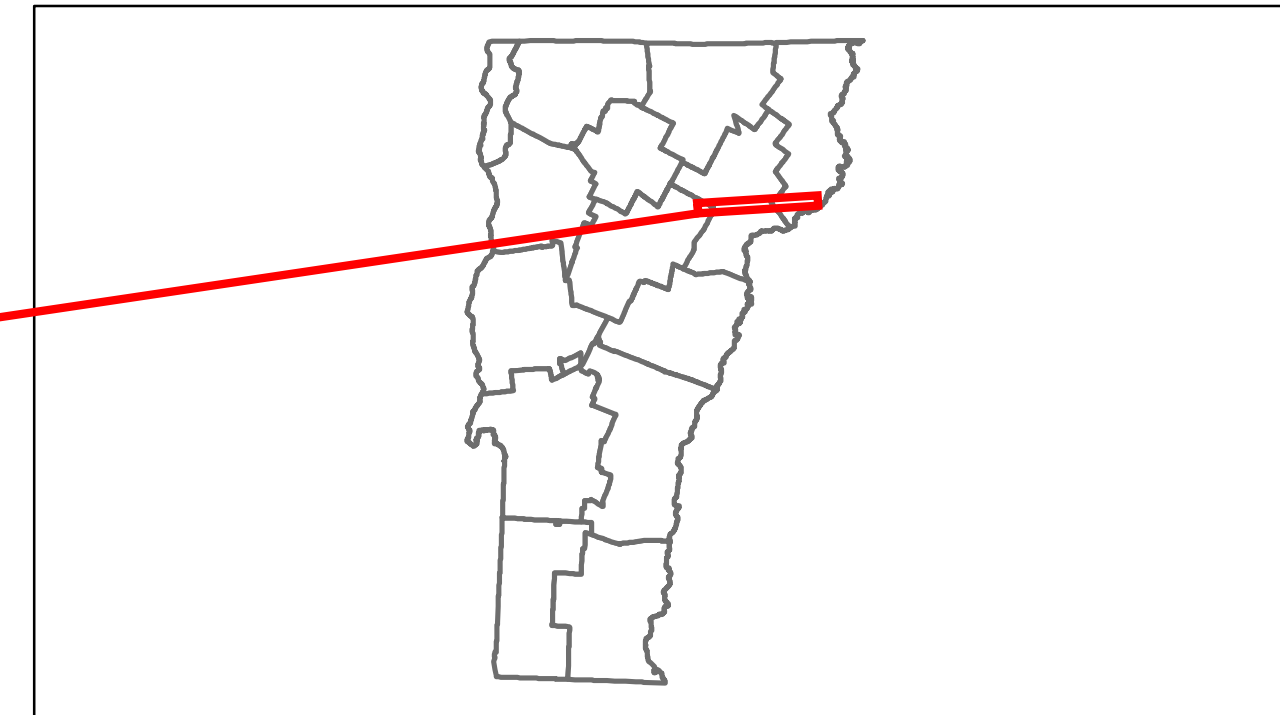


Route Log Progress Chart

DRAFT

Please Note: Errors and Omissions May Exist.
Contact the VTrans Mapping Unit with questions or concerns.

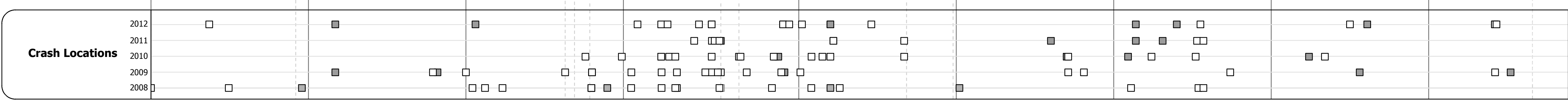
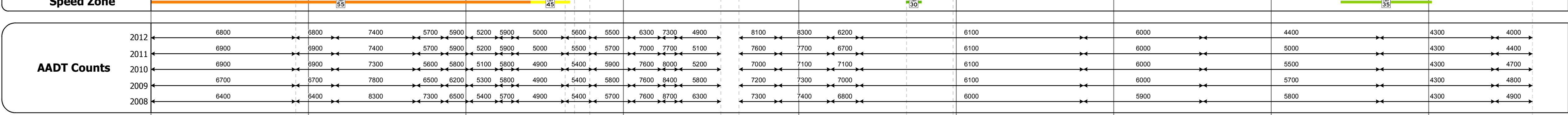
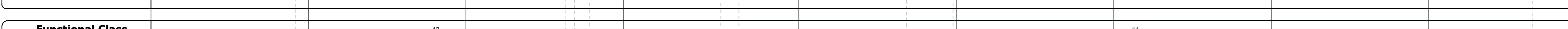
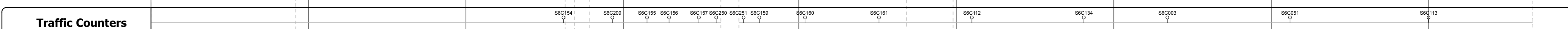
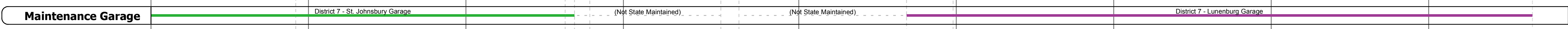
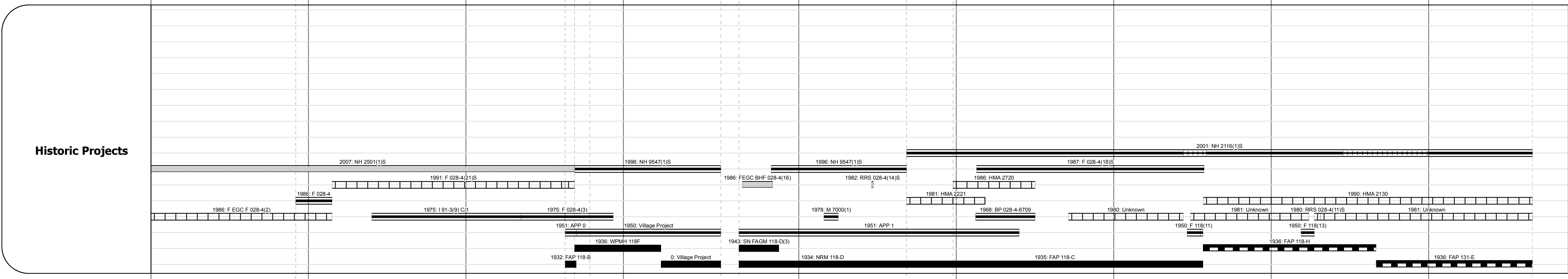
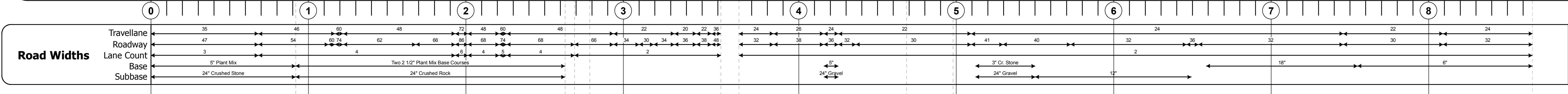
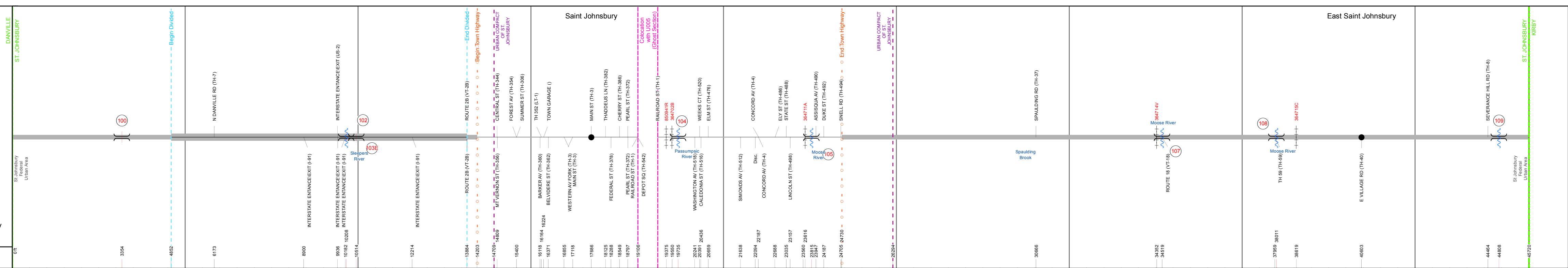
DISTRICT	TOWN	ROUTE
7	ST. JOHNSBURY	US-2



Stick Diagram

- Town Boundary
- Village/UC Boundaries
- District Boundaries
- State/Town Highway Change
- Divided Highway Limits
- Ghost Section Boundary
- FAU Limits
- Streams
- Town Center
- Primary Structures
- Secondary Structures
- Stations (Feet)
- Railroad Crossings
- Divided State Highway
- State Highway
- Divided Class 1 Town Highway
- Class 1 Town Highway

Scale: 1in = 2000 FEET



DESCRIPTION BLOCK

Culvert 100:
Culvert - 1986
Structure No. 300028010003111
Length: 10'
Under Clearance: 10.0'
Facility Carried: US2
Bridge Type: CGMPP
Features Intersected: ACCESS ROAD
Maintenance: State

Culvert 102:
Culvert - 1975
Structure No. 200028010203112
Length: 56'
Facility Carried: US 00002 ML
Bridge Type: TWIN CELL RC BOX
Features Intersected: SLEEPER RIVER
Maintenance/Ownership: State

Bridge 103E:
Stringer/multi-beam or girder - 1975
Structure No. 200028103E03112
Length: 327'
Width: 42.6'
Under Clearance: 21.0'
Facility Carried: US 00002 E ML
Bridge Type: 2 SP CONT WLD PL GIR
Features Intersected: 1 91 UNDER US 2
Surface: Bituminous
Maintenance/Ownership: State

Bridge 104:
Girder and floorbeam system - 1943
Structure No. 200028010403112
Length: 890'
Width: 38.6'
Under Clearance: 13.25'
Facility Carried: US 00002 ML
Bridge Type: 8 SPN RIVET 2 GIRDER
Features Intersected: US 2 OVER PSR/MC/CRL RR
Surface: Bituminous
Maintenance/Ownership: Town

Bridge 105:
Stringer/multi-beam or girder - 1931
Structure No. 200028010503112
Length: 64'
Width: 41.5'
Facility Carried: US 00002 ML
Bridge Type: ROLLED BEAM
Features Intersected: MOOSE RIVER
Surface: Bituminous
Maintenance/Ownership: City/Municipal

Bridge 107:
Stringer/multi-beam or girder - 1929
Structure No. 200028010703112
Length: 64'
Width: 42.0'
Facility Carried: US 00002 ML
Bridge Type: ROLLED BEAM
Features Intersected: MOOSE RIVER
Surface: Bituminous
Maintenance/Ownership: State

Bridge 108:
Tee Beam - 1929
Structure No. 200028010803112
Length: 103'
Width: 30.0'
Facility Carried: US 00002 ML
Bridge Type: CONC. T-BEAM/SLAB
Features Intersected: MOOSE RIVER
Surface: Bituminous
Maintenance/Ownership: State

Bridge 109:
Slab - 1929
Structure No. 300028010903111
Length: 18'
Width: 25.0'
Under Clearance: 8.0'
Facility Carried: US2
Bridge Type: CONCRETE SLAB
Features Intersected: BROOK
Surface: Bituminous
Maintenance: State

Historic Projects	Functional Class	Curves	Road Widths	AADT	Mileage by Functional Class By Sheet	Mileage by Town By Sheet	DISTRICT	TOWN	Date: 04/02/14	ROUTE
Retreatment Resurface Unknown Bituminous Mix Skimny Mix Bituminous Seal	1 2 3 4 5 6 7 8 9 10 11 12 13 14 15 16 17 18 19	curve left curve right	(ft)	(count)	028-4 12 - urban - Principal Arterial - Other Freeway 3.619 028-4 14 - urban - Principal Arterial - Other 5.040	ST. JOHNSBURY - U002-0311 8.659 of 8.659 Ghost Section - US-5 (1.714 to 1.828) 0.114	7	ST. JOHNSBURY	1 of 1 TWN mileage: 0.0 to 8.659	US-2 ETE mileage: 110.338 to 118.997
Gravel Surface Treated Gravel Plant Mix Reclaimed Base and Bituminous Concrete Concrete	Speed Zones 25 30 35 40 45 50 55 60 65	grade up grade down	Traffic Counters (counter ID)	Crash Locations Fatal Injury Property Damage Only Unknown Crash Type	Total Mileage: 8.659 mi	Total Mileage: 8.659 mi				