

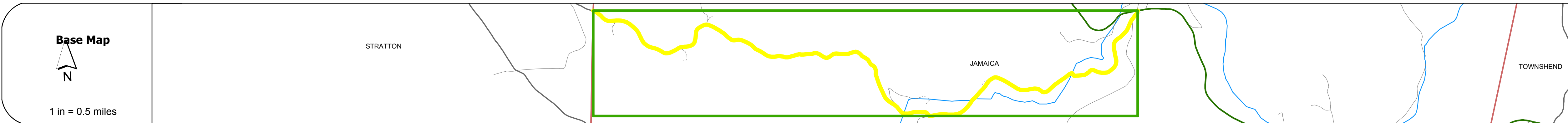
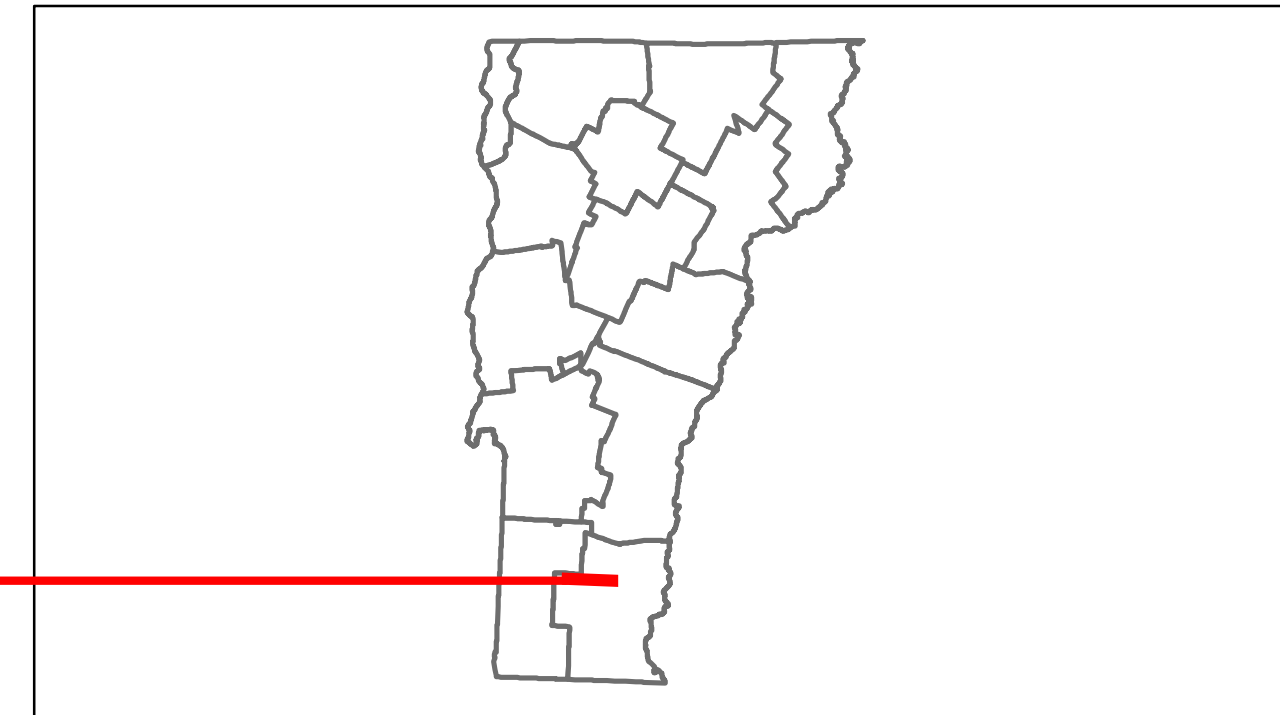


Route Log Progress Chart

DRAFT

Please Note: Errors and Omissions May Exist.
Contact the VTrans Mapping Unit with questions or concerns.

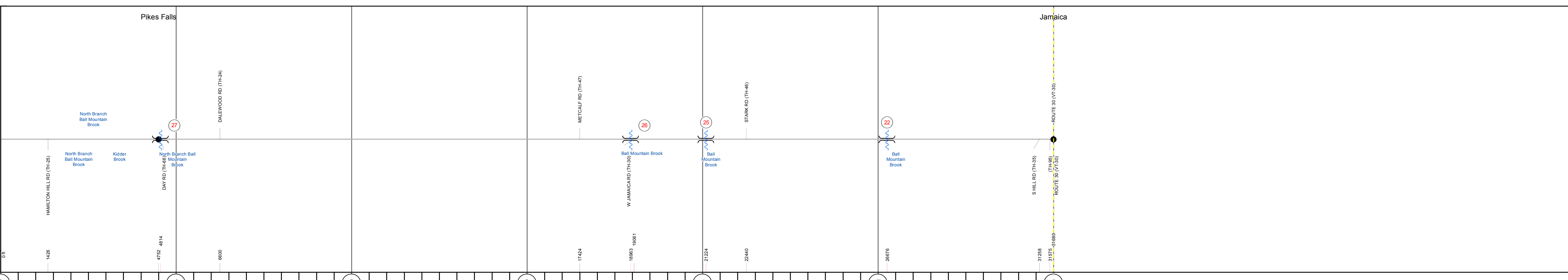
DISTRICT	TOWN	ROUTE
2	JAMAICA	Min-0536



Stick Diagram

- Town Boundary
- Village/UC Boundaries
- District Boundaries
- State/Town Highway Change
- Divided Highway Limits
- Ghost Section Boundary
- FAU Limits
- Streams
- Town Center
- Primary Structures
- Secondary Structures
- Stations (Feet)
- Railroad Crossings
- Divided State Highway
- State Highway
- Divided Class 1 Town Highway
- Class 1 Town Highway

Scale: 1in = 2000 FEET



Road Widths	Travellane									
	Roadway									
	Lane Count									
	Base									
	Subbase									

Curves										
---------------	--	--	--	--	--	--	--	--	--	--

Grades										
---------------	--	--	--	--	--	--	--	--	--	--

Historic Projects										
--------------------------	--	--	--	--	--	--	--	--	--	--

Maintenance Garage										
---------------------------	--	--	--	--	--	--	--	--	--	--

Traffic Counters	SEK030A	SEK032						SEK036		
-------------------------	---------	--------	--	--	--	--	--	--------	--	--

Functional Class	8 - Rural - Minor collector									
-------------------------	-----------------------------	--	--	--	--	--	--	--	--	--

Speed Zone										
-------------------	--	--	--	--	--	--	--	--	--	--

AADT Counts	2012									
	2011									
	2010									
	2009									
	2008									

Crash Locations	2012									
	2011									
	2010									
	2009									
	2008									

DESCRIPTION BLOCK

Bridge 27:
Stringer/multi-beam or girder - 1936
Structure No. 101309002713091
Length: 57'
Width: 27.8'
Facility Carried: C2001
Bridge Type: ROLLED BEAM
Features Intersected: N. BR. BALL MT. BROOK
Surface: Bituminous
Maintenance/Ownership: Town

Bridge 26:
Stringer/multi-beam or girder - 1982
Structure No. 101309002613091
Length: 80'
Width: 27.0'
Facility Carried: C2001
Bridge Type: ROLLED BEAM
Features Intersected: BALL MTN. BROOK
Maintenance/Ownership: Town

Bridge 25:
Stringer/multi-beam or girder - 1978
Structure No. 101309002513091
Length: 78'
Width: 22.8'
Facility Carried: C2001
Bridge Type: ROLLED BEAM
Features Intersected: BALL MTN. BROOK
Maintenance/Ownership: Town

Bridge 22:
Stringer/multi-beam or girder - 1939
Structure No. 101309002213091
Length: 56'
Width: 25.1'
Facility Carried: C2001
Bridge Type: ROLLED BEAM
Features Intersected: BALL MTN. BROOK
Maintenance/Ownership: Town

Historic Projects	Functional Class	Curves	Road Widths	AADT	Mileage by Functional Class By Sheet	Mileage by Town By Sheet	DISTRICT	TOWN	Date: 04/01/14	ROUTE
Retreatment, Resurface, Unknown, Bituminous Mix, Skimny Mix, Bituminous Seal, Bituminous Concrete, Surface Treated Gravel, Plant Mix, Reclaimed Base and Bituminous Concrete, Concrete	1-19, 20-25	curve left, curve right	(ft)	(count)	0536 8 - Rural - Minor collector 6.000	JAMAICA - S05361309 6.0 of 6.0	2	JAMAICA	1 of 1 TWN mileage: 0.0 to 6.0	Min-0536 ETE mileage: 0.0 to 6.0
	Speed Zones	Grades	Traffic Counters	Crash Locations	Total Mileage: 6.000 mi	Total Mileage: 6.0 mi				

For More Information Contact - Vermont Agency of Transportation, Policy, Planning and Intermodal Development Division - Mapping Unit, 1 National Life Drive, Montpelier, VT 05633-5001 Telephone: 802-828-2600.