

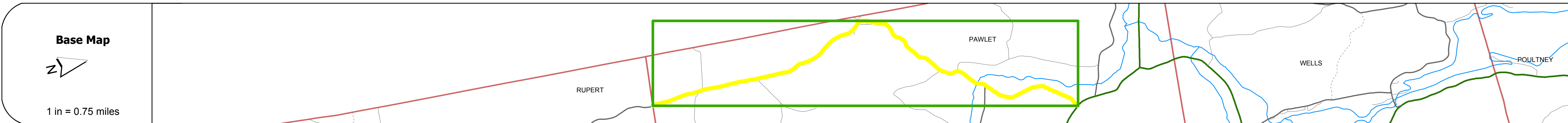
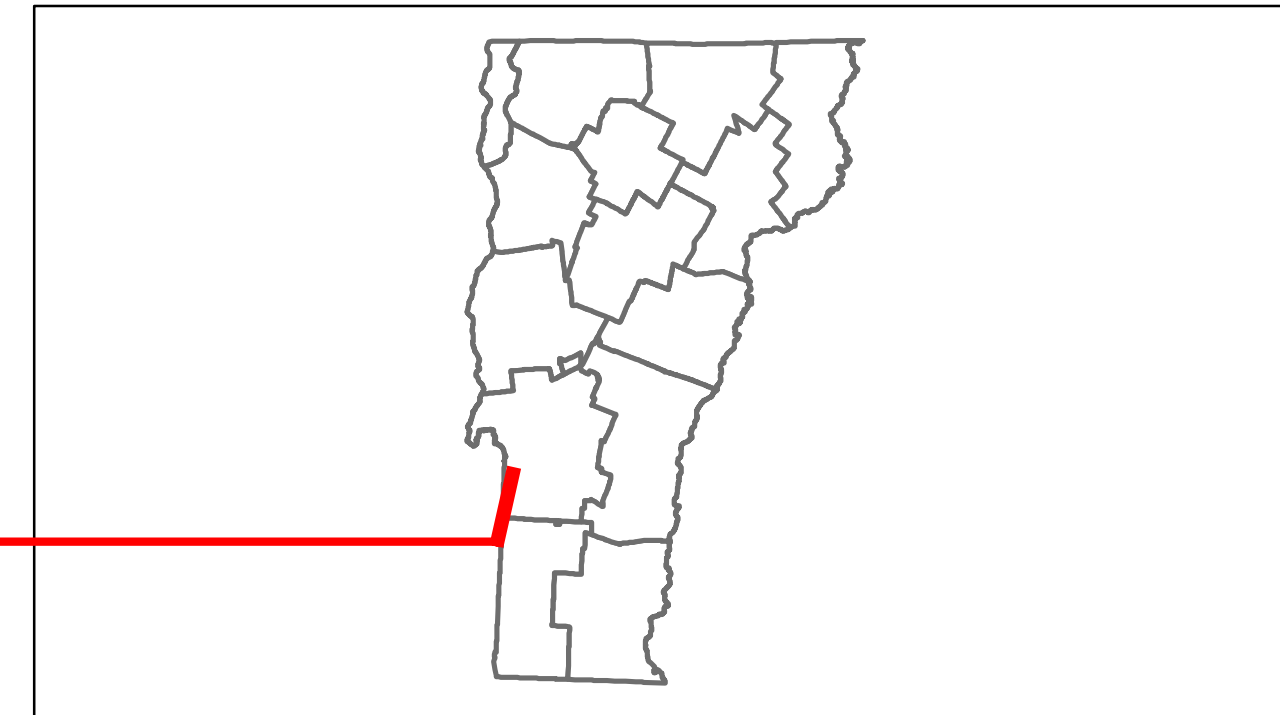


# Route Log Progress Chart

**DRAFT**

Please Note: Errors and Omissions May Exist.  
Contact the VTrans Mapping Unit with questions or concerns.

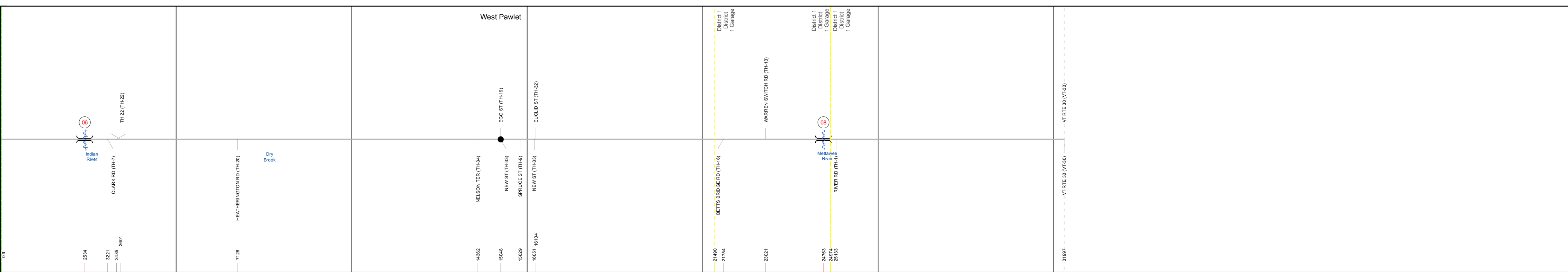
DISTRICT	TOWN	ROUTE
1	PAWLET	Maj-0131



**Stick Diagram**

- Town Boundary
- Village/UC Boundaries
- District Boundaries
- State/Town Highway Change
- Divided Highway Limits
- Ghost Section Boundary
- FAU Limits
- Streams
- Town Center
- Primary Structures
- Secondary Structures
- Stations (Feet)
- Railroad Crossings
- Divided State Highway
- State Highway
- Divided Class 1 Town Highway
- Class 1 Town Highway

Scale: 1in = 2000 FEET



## DESCRIPTION BLOCK

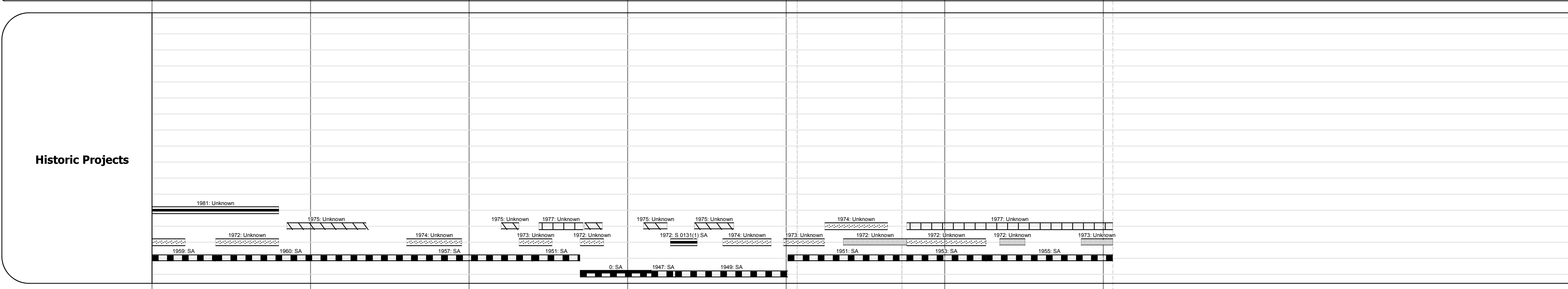
**Bridge 6:**  
Tee Beam - 1937  
Structure No. 20013100061142  
Length: 42'  
Width: 23.5'  
Facility Carried: TR 01 FAS 131  
Bridge Type: CONCRETE T-BEAM  
Features Intersected: INDIAN RIVER  
Surface: Bituminous  
Maintenance/Ownership: Town

**Culvert 8:**  
Culvert - 1922  
Structure No. 20013100081142  
Length: 51'  
Facility Carried: TR 01 FAS 131  
Bridge Type: CONCRETE ARCH  
Features Intersected: METTAWEE RIVER  
Surface: Bituminous  
Maintenance/Ownership: Town

Travellane	20	22	20	20
Roadway	22	30	22	20
Lane Count		30		
Base		18' Gravel		
Subbase				

<b>Curves</b>				
---------------	--	--	--	--

<b>Grades</b>				
---------------	--	--	--	--



<b>Maintenance Garage</b>				(Not State Maintained)
---------------------------	--	--	--	------------------------

<b>Traffic Counters</b>	566362		566361	566360
-------------------------	--------	--	--------	--------

<b>Functional Class</b>	7			
-------------------------	---	--	--	--

<b>Speed Zone</b>				
-------------------	--	--	--	--

<b>AADT Counts</b>	2012: 450	670	750	830
	2011: 450	660	740	820
	2010: 460	650	750	740
	2009: 470	640	750	650
	2008: 480	620	760	570

<b>Crash Locations</b>	2012			
	2011			
	2010			
	2009	□	□	□
	2008			

<p><b>Historic Projects</b></p> <ul style="list-style-type: none"> <li>Retreatment</li> <li>Resurface</li> <li>Unknown</li> <li>Bituminous Mix</li> <li>Skimny Mix</li> <li>Bituminous Seal</li> <li>Gravel</li> <li>Surface Treated Gravel</li> <li>Plant Mix</li> <li>Reclaimed Base and Bituminous Concrete</li> <li>Concrete</li> </ul>	<p><b>Functional Class</b></p> <ul style="list-style-type: none"> <li>1</li> <li>2</li> <li>6</li> <li>7</li> <li>8</li> <li>11</li> <li>12</li> <li>14</li> <li>16</li> <li>17</li> <li>19</li> </ul> <p><b>Speed Zones</b></p> <ul style="list-style-type: none"> <li>25</li> <li>30</li> <li>35</li> <li>40</li> <li>45</li> <li>50</li> <li>55</li> <li>60</li> <li>65</li> </ul>	<p><b>Curves</b></p> <ul style="list-style-type: none"> <li>curve left</li> <li>curve right</li> </ul> <p><b>Grades</b></p> <ul style="list-style-type: none"> <li>grade up</li> <li>grade down</li> </ul>	<p><b>Road Widths</b></p> <p>(ft)</p>	<p><b>Traffic Counters</b></p> <p>(counter ID)</p>	<p><b>Crash Locations</b></p> <ul style="list-style-type: none"> <li>Fatal</li> <li>Injury</li> <li>Property Damage Only</li> <li>Unknown Crash Type</li> </ul>	<p><b>Mileage by Functional Class By Sheet</b></p> <p>0131 7 - Rural - Major collector 6.060</p>	<p><b>Mileage by Town By Sheet</b></p> <p>PAWLET - S01311114 6.06 of 6.06</p>	<p><b>DISTRICT</b></p> <p>1</p>	<p><b>TOWN</b></p> <p>PAWLET</p>	<p><b>Date:</b> 04/01/14</p>	<p><b>ROUTE</b></p> <p>Maj-0131</p> <p>ETE mileage: 4.13 to 10.19</p>
Total Mileage: 6.06 mi						Total Mileage: 6.06 mi					