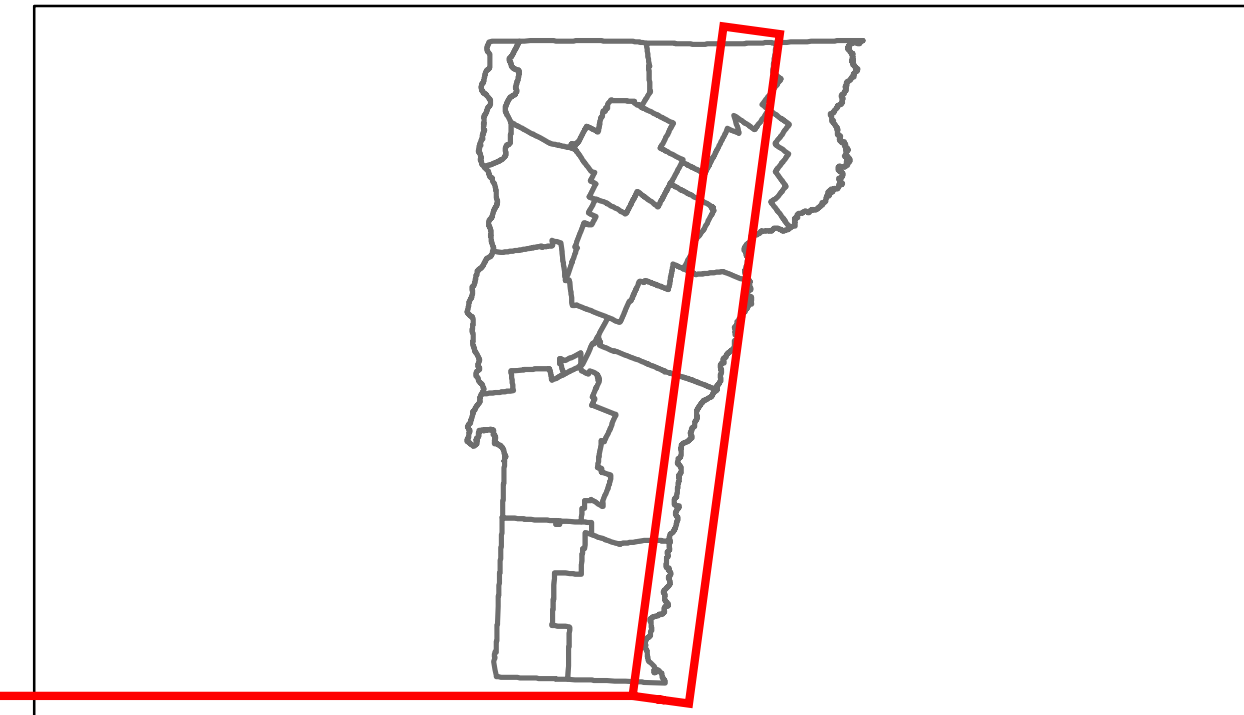




# Route Log Progress Chart

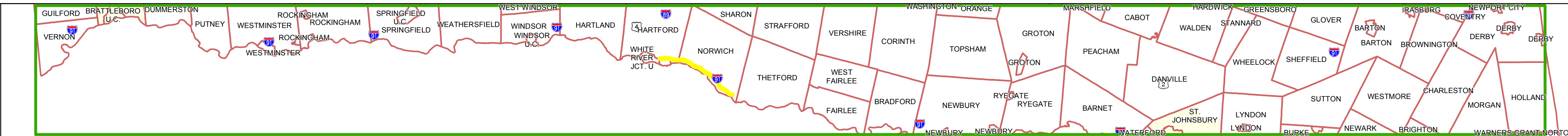
**DRAFT**  
Please Note: Errors and Omissions May Exist.  
Contact the VTrans Mapping Unit with questions or concerns.

DISTRICT	TOWN	ROUTE
	ETE	I-91



**Base Map**

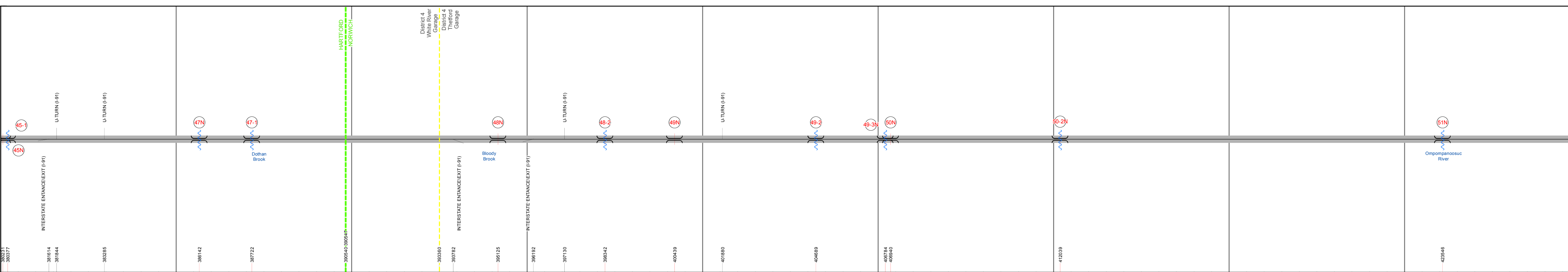
1 in = 7 miles



**Stick Diagram**

- Town Boundary
- Village/UC Boundaries
- District Boundaries
- State/Town Highway Change
- Divided Highway Limits
- Ghost Section Boundary
- FAU Limits
- Streams
- Town Center
- Primary Structures
- Secondary Structures
- Stations (Feet)
- Railroad Crossings
- Divided State Highway
- State Highway
- Divided Class 1 Town Highway
- Class 1 Town Highway

Scale: 1in = 2000 FEET



## DESCRIPTION BLOCK

**Bridge 45N:**  
Stringer/multi-beam or girder - 1967  
Structure No. 200091045N14082  
Length: 157'  
Width: 37.3'  
Under Clearance: 16.17'  
Facility Carried: I 00091 ML  
Bridge Type: 3 SP CONT ROLLED BM  
Features Intersected: I 91 OVER WILDER SH  
Surface: Bituminous  
Maintenance/Ownership: State

**Bridge 50-2N:**  
Culvert - 1971  
Structure No. 300091502N14111  
Length: 9'  
Under Clearance: 10.0'  
Facility Carried: I91  
Bridge Type: CGMPP  
Features Intersected: BROOK  
Maintenance: State

**Bridge 51N:**  
Stringer/multi-beam or girder - 1970  
Structure No. 200091051N14112  
Length: 250'  
Width: 39.4'  
Under Clearance: 14.5'  
Facility Carried: I 00091 ML  
Bridge Type: 2 SP WELDED PL GDR  
Features Intersected: I 91 OVER TH 3 OMPOMR  
Surface: Bituminous  
Maintenance/Ownership: State

**Culvert 45-1:**  
Culvert - 1967  
Structure No. 30009145-114081  
Length: 7'  
Under Clearance: 7.5'  
Facility Carried: I91  
Bridge Type: CGMPP  
Features Intersected: BROOK  
Maintenance: State

**Bridge 47N:**  
Stringer/multi-beam or girder - 1967  
Structure No. 200091047N14082  
Length: 197'  
Width: 37.3'  
Under Clearance: 17.0'  
Facility Carried: I 00091 ML  
Bridge Type: 3 SP CONT PLATE GIR  
Features Intersected: I 91 OVER US 5 + BROOK  
Surface: Bituminous  
Maintenance/Ownership: State

**Culvert 47-1:**  
Culvert - 1968  
Structure No. 30009147-114081  
Length: 7'  
Under Clearance: 7.5'  
Facility Carried: I91  
Bridge Type: CGMPP  
Features Intersected: BROOK  
Maintenance: State

**Bridge 48N:**  
Stringer/multi-beam or girder - 1968  
Structure No. 200091048N14112  
Length: 225'  
Width: 37.3'  
Under Clearance: 15.5'  
Facility Carried: I 00091 ML  
Bridge Type: 3 SP CONT PLATE GIR  
Features Intersected: I 91 OVER VT 10A  
Surface: Bituminous  
Maintenance/Ownership: State

**Culvert 48-2:**  
Culvert - 1968  
Structure No. 30009148-214111  
Length: 6'  
Under Clearance: 6.0'  
Facility Carried: I91  
Bridge Type: A.C.C.G.M.P  
Features Intersected: BROOK  
Maintenance: State

**Bridge 49N:**  
Stringer/multi-beam or girder - 1968  
Structure No. 200091049N14112  
Length: 137'  
Width: 37.3'  
Under Clearance: 15.67'  
Facility Carried: I 00091 ML  
Bridge Type: WELDED PLATE GIRDER  
Features Intersected: I 91 OVER US 5  
Surface: Bituminous  
Maintenance/Ownership: State

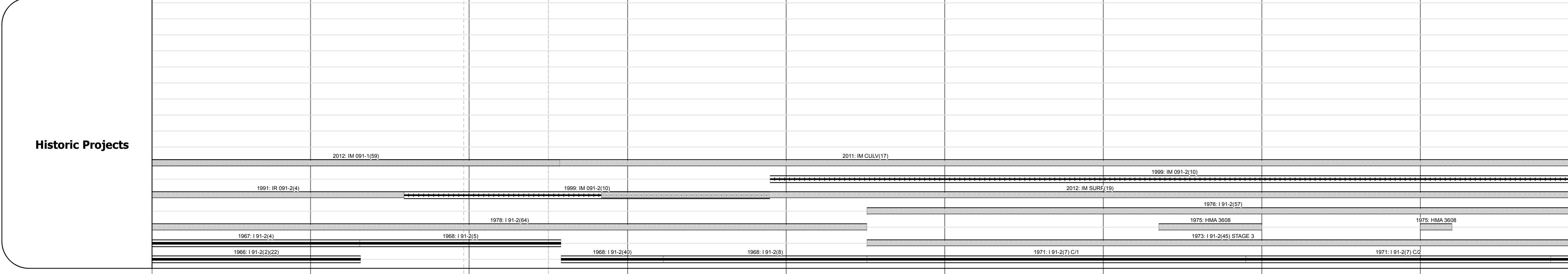
**Culvert 49-2:**  
Culvert - 1971  
Structure No. 30009149-214111  
Length: 6'  
Under Clearance: 6.5'  
Facility Carried: I91  
Bridge Type: CGMPP  
Features Intersected: BROOK  
Maintenance: State

**Culvert 49-3N:**  
Culvert - 1971  
Structure No. 300091493N14111  
Length: 6'  
Under Clearance: 6.5'  
Facility Carried: I91  
Bridge Type: CGMPP  
Features Intersected: BROOK  
Maintenance: State

**Culvert 50N:**  
Culvert - 1970  
Structure No. 200091050N14112  
Length: 21'  
Under Clearance: 14.0'  
Facility Carried: I 00091 ML  
Bridge Type: REF CONC BOX  
Features Intersected: I 91 OVER TH NO 24  
Maintenance/Ownership: State

<b>Road Widths</b>	Travellane	24
	Roadway	38
	Lane Count	2
	Base	Two 2 1/2" Cr. Stone Base Courses
	Subbase	24" Crushed Rock

<b>Curves</b>	
<b>Grades</b>	-3.5, -3.3, +3, -4.5, +3.9, +4.7, -5, +3.9



**Maintenance Garage**

District 4 - White River Garage

District 4 - Thetford Garage

**Traffic Counters**

86Y442

86Y040

86Y002

**Functional Class**

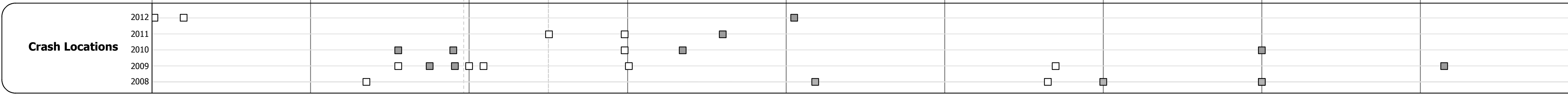
1 - Rural - Principal Arterial - Interstate

**Speed Zone**

55

**AADT Counts**

2012	17100	11700
2011	16900	11800
2010	16700	11900
2009	16900	11800
2008	17100	11600



<b>Historic Projects</b>	<b>Functional Class</b>	<b>Curves</b>	<b>Road Widths</b>	<b>AADT</b>	<b>Mileage by Functional Class By Sheet</b>	<b>Mileage by Town By Sheet</b>	<b>DISTRICT</b>	<b>TOWN</b>	<b>Date: 04/01/14</b>	<b>ROUTE</b>
Retreatment Resurface Unknown Bituminous Mix Skimny Mix Bituminous Seal	1 2 6 7 8 11 12 14 16 17 19	curve left curve right	(ft)	(count)	91-2 1 - Rural - Principal Arterial - Interstate 9.000	ETE - I091-0000 9.0 of 177.432		ETE	9 of 20 TWN mileage: 72.0 to 81.0	I-91 ETE mileage: 72.0 to 81.0
Bituminous Concrete Gravel Surface Treated Gravel Macadam Cold Patch and Bituminous Concrete Concrete	Speed Zones 25 30 35 40 45 50 55 60 65	grade up grade down	Traffic Counters (counter ID)	Fatal Injury Property Damage Only Unknown Crash Type	<b>Total Mileage: 9.000 mi</b>	<b>Total Mileage: 9.0 mi</b>				