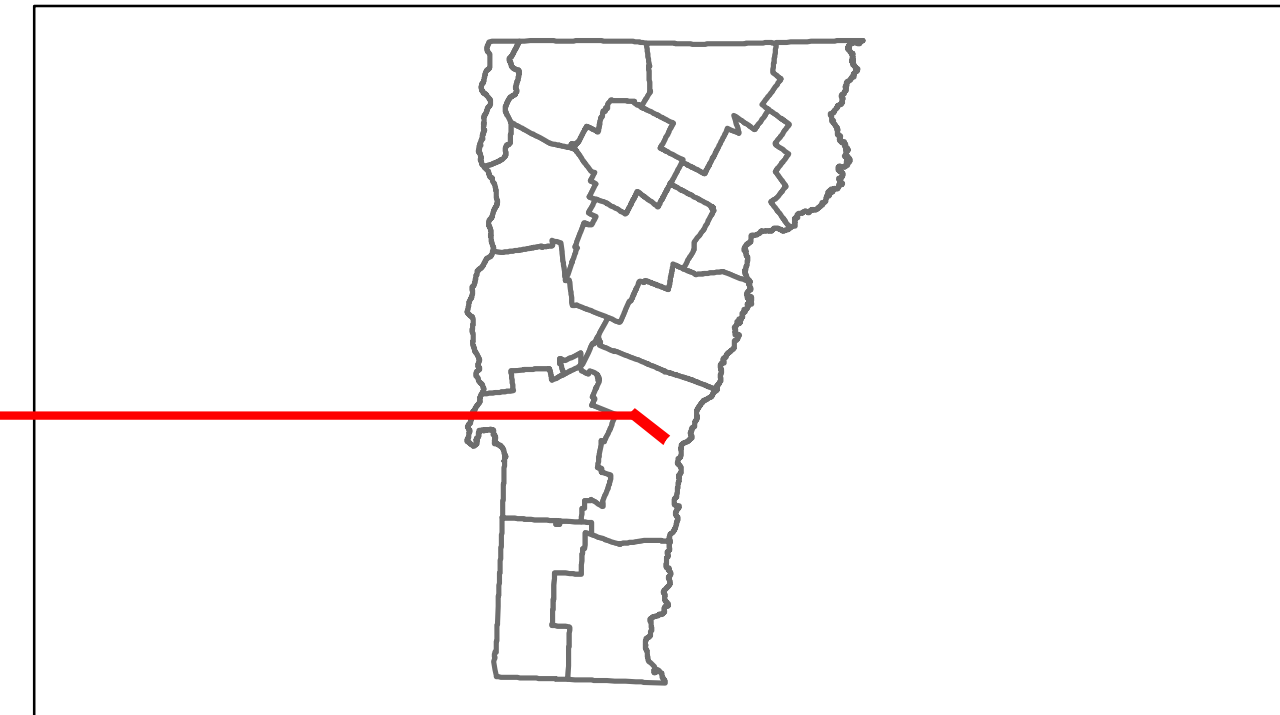




Route Log Progress Chart

DRAFT
Please Note: Errors and Omissions May Exist.
Contact the VTrans Mapping Unit with questions or concerns.

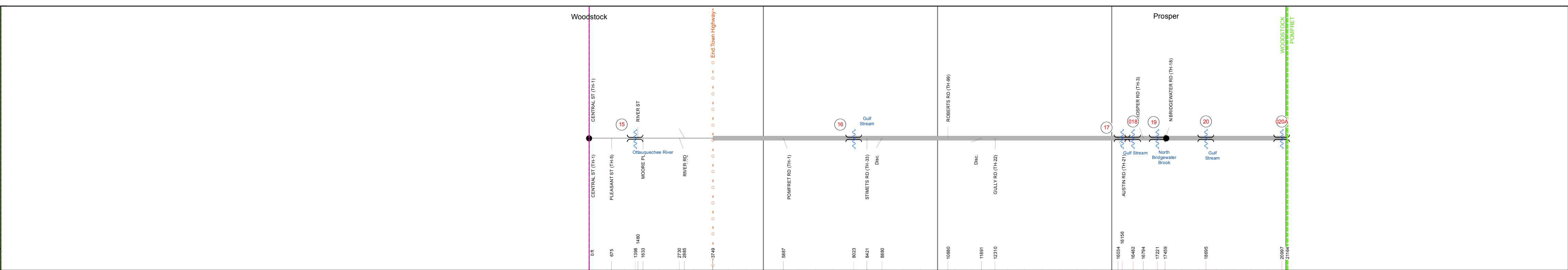
DISTRICT	TOWN	ROUTE
4	WOODSTOCK	VT-12



Stick Diagram

- Town Boundary
- Village/UC Boundaries
- District Boundaries
- State/Town Highway Change
- Divided Highway Limits
- Ghost Section Boundary
- FAU Limits
- Streams
- Town Center
- Primary Structures
- Secondary Structures
- Stations (Feet)
- Railroad Crossings
- Divided State Highway
- State Highway
- Divided Class 1 Town Highway
- Class 1 Town Highway

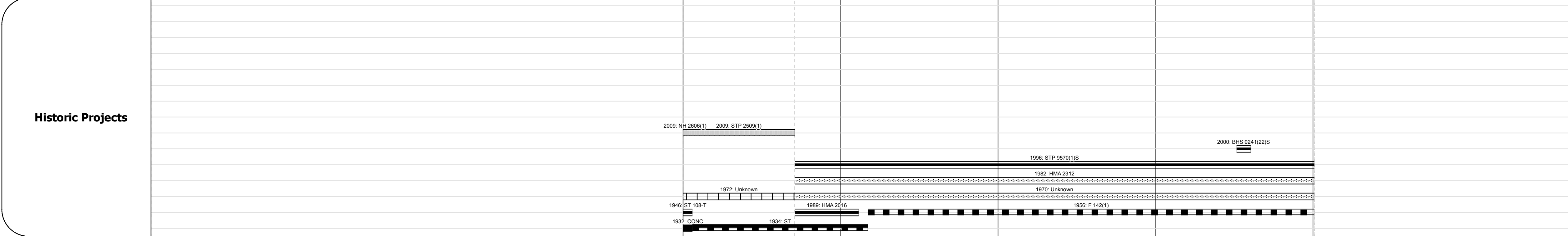
Scale: 1 INCH = 2000 FEET



Road Widths	Travellane	Roadway	Lane Count	Base	Subbase

Curves	Station	Station	Station	Station	Station

Grades	Station	Station	Station	Station	Station



Maintenance Garage	Station	Station	Station	Station	Station

Traffic Counters	Station	Station	Station	Station	Station

Functional Class	Station	Station	Station	Station	Station

Speed Zone	Station	Station	Station	Station	Station

ADT Counts	Year	Station 1	Station 2	Station 3	Station 4	Station 5
	2012	1800-3100	3100	2000	1500	
	2011	1800-3500	3100	2000	1500	
	2010	1800-3800	3100	2000	1500	
	2009	2100-3900	3300	1900	1600	
	2008	2300-3900	3400	1800	1600	

Crash Locations	Year	Station 1	Station 2	Station 3	Station 4	Station 5
	2012					
	2011					
	2010					
	2009					
	2008					

DESCRIPTION BLOCK
<p>Bridge 15: Stringer/multi-beam or girder - 1980 Structure No. 200241001514242 Length: 112' Width: 25.4' Facility Carried: VT 00012 ML Bridge Type: WELDED PLATE GIRDER Features Intersected: OTTAUQUECHEE RIVER Surface: Bituminous Maintenance/Ownership: Town</p> <p>Bridge 16: Stringer/multi-beam or girder - 1956 Structure No. 200241001614242 Length: 92' Width: 30.2' Facility Carried: VT 00012 ML Bridge Type: ROLLED BEAM Features Intersected: GULF STREAM Surface: Bituminous Maintenance/Ownership: State</p> <p>Bridge 17: Stringer/multi-beam or girder - 1956 Structure No. 200241001714242 Length: 97' Width: 29.9' Facility Carried: VT 00012 ML Bridge Type: ROLLED BEAM Features Intersected: GULF STREAM Surface: Bituminous Maintenance/Ownership: State</p> <p>Culvert 18: Culvert - 1956 Structure No. 300241001814241 Length: 7' Under Clearance: 7.0' Facility Carried: VT12 Bridge Type: CGMP Features Intersected: BROOK Maintenance: State</p> <p>Bridge 19: Tee Beam - 1938 Structure No. 200241001914242 Length: 49' Width: 30.4' Facility Carried: VT 00012 ML Bridge Type: CONCRETE T-BEAM Features Intersected: NO. BRIDGEWATER BROOK Surface: Bituminous Maintenance/Ownership: State</p> <p>Bridge 20: Stringer/multi-beam or girder - 1999 Structure No. 200241002014242 Length: 79' Width: 30.6' Facility Carried: VT 00012 ML Bridge Type: WELDED GIRDER Features Intersected: GULF STREAM Surface: Bituminous Maintenance/Ownership: State</p> <p>Culvert 20A: Culvert - 1956 Structure No. 300241020A14241 Length: 6' Under Clearance: 5.5' Facility Carried: VT12 Bridge Type: ACCGMP Features Intersected: CATTLE PASS Maintenance: State</p>

<p>Historic Projects</p> <ul style="list-style-type: none"> Retreatment Resurface Unknown Bituminous Mix Skimny Mix Bituminous Seal Gravel Surface Treated Gravel Plant Mix Reclaimed Base and Bituminous Concrete Concrete 	<p>Functional Class</p> <ul style="list-style-type: none"> 1 (Blue) 2 (Red) 3 (Green) 4 (Yellow) 5 (Purple) 6 (Orange) 7 (Light Blue) 8 (Light Red) 9 (Light Green) 10 (Light Yellow) 11 (Light Purple) 12 (Light Orange) 13 (Light Blue-Gray) 14 (Light Red-Gray) 15 (Light Green-Gray) 16 (Light Yellow-Gray) 17 (Light Purple-Gray) 18 (Light Orange-Gray) 19 (Light Blue-Gray) <p>Speed Zones</p> <ul style="list-style-type: none"> 25 30 35 40 45 50 55 60 65 	<p>Curves</p> <ul style="list-style-type: none"> Left Right <p>Grades</p> <ul style="list-style-type: none"> grade up grade down 	<p>Road Widths</p> <p>(ft)</p>	<p>Traffic Counters</p> <p>(counter ID)</p>	<p>Crash Locations</p> <ul style="list-style-type: none"> Fatal Injury Property Damage Only Unknown Crash Type 	<p>Mileage by Functional Class By Sheet</p> <p>0241 7 - Rural - Major collector 4.008</p>	<p>Mileage by Town By Sheet</p> <p>WOODSTOCK - V012-1424 4.008 of 4.008 Ghost Section - US-4 (9.648 to 6.269) 3.379</p> <p>Total Mileage: 4.008 mi</p>	<p>DISTRICT</p> <p>4</p>	<p>TOWN</p> <p>WOODSTOCK</p>	<p>Date: 05/22/14</p> <p>1 of 1 TWN mileage: 0.0 to 4.008</p>	<p>ROUTE</p> <p>VT-12 ETE mileage: 8.099 to 12.107</p>
---	---	--	---------------------------------------	--	---	--	--	---------------------------------	-------------------------------------	---	---

For More Information Contact - Vermont Agency of Transportation, Policy, Planning and Intermodal Development Division - Mapping Unit, 1 National Life Drive, Montpelier, VT 05633-5001 Telephone: 802-828-2600.