

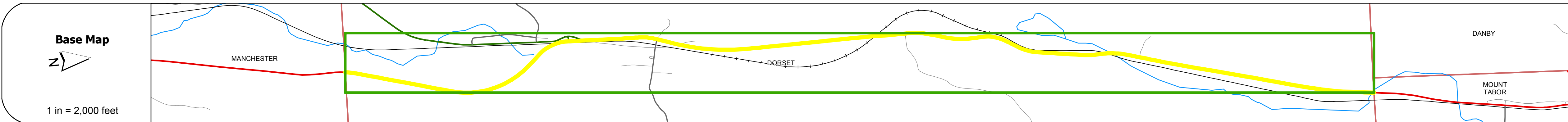
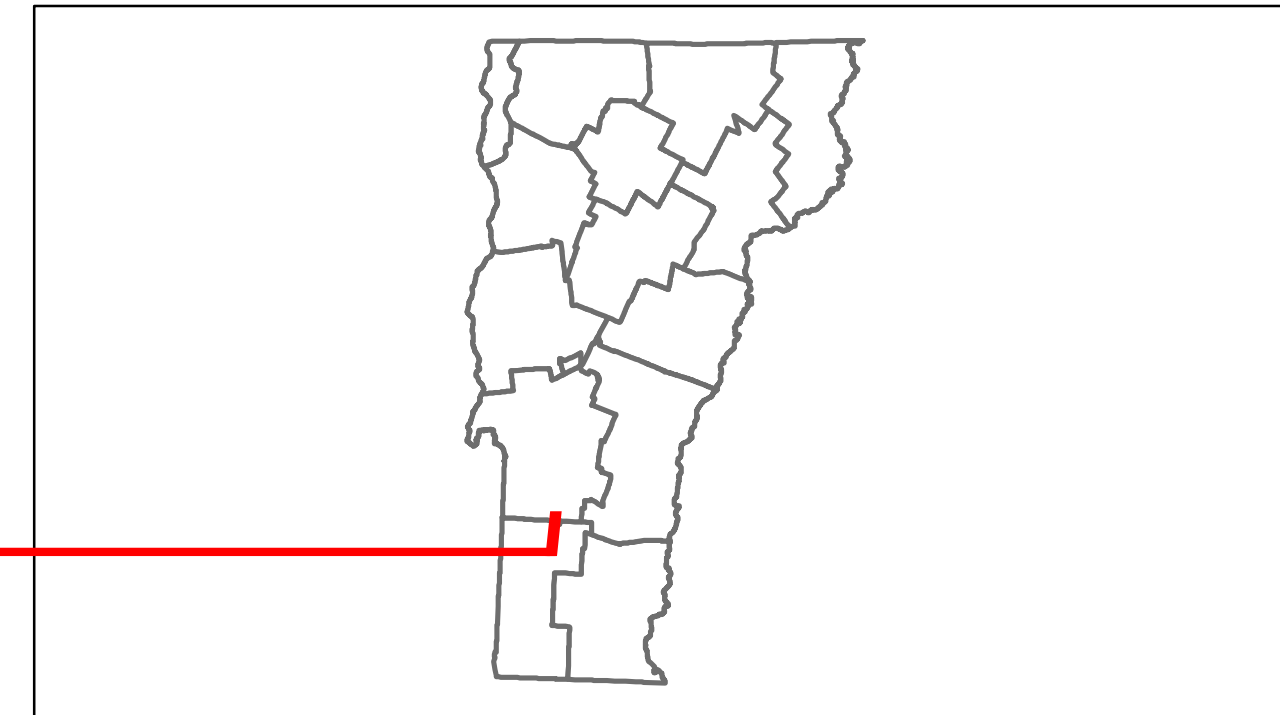


Route Log Progress Chart

DRAFT

Please Note: Errors and Omissions May Exist.
Contact the VTrans Mapping Unit with questions or concerns.

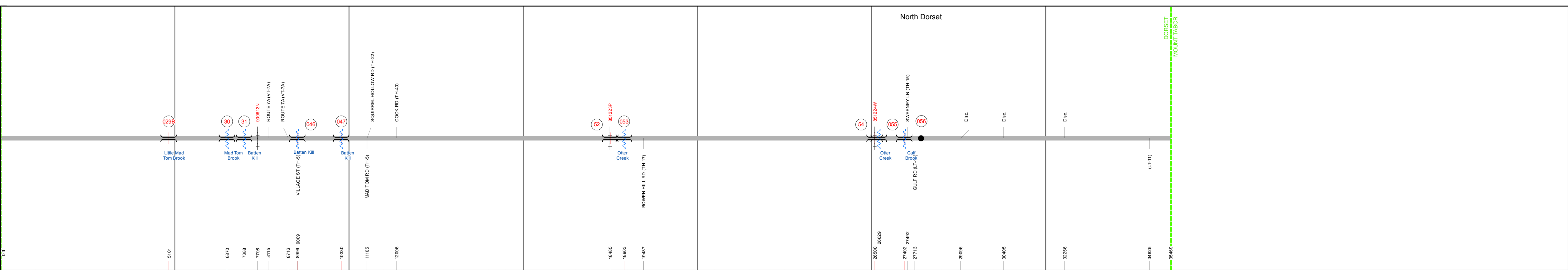
DISTRICT	TOWN	ROUTE
1	DORSET	US-7



Stick Diagram

- Town Boundary
- Village/UC Boundaries
- District Boundaries
- State/Town Highway Change
- Divided Highway Limits
- Ghost Section Boundary
- FAU Limits
- Streams
- Town Center
- Primary Structures
- Secondary Structures
- Stations (Feet)
- Railroad Crossings
- Divided State Highway
- State Highway
- Divided Class 1 Town Highway
- Class 1 Town Highway

Scale: 1 INCH = 2000 FEET



DESCRIPTION BLOCK

Culvert 295:
Culvert - 1990
Structure No. 300019029B02031
Length: 12'
Under Clearance: 14.17'
Facility Carried: US7
Bridge Type: RC BOX
Features Intersected: PRIVATE FOREST ROAD
Maintenance: State

Bridge 30:
Stringer/multi-beam or girder - 1990
Structure No. 200019003002032
Length: 86'
Width: 48.0'
Facility Carried: US 00007 ML
Bridge Type: WELDED PLATE GIRDER
Features Intersected: MAD TOM BROOK
Surface: Bituminous
Maintenance/Ownership: State

Culvert 31:
Culvert - 1990
Structure No. 200019003102032
Length: 32'
Facility Carried: US 00007 ML
Bridge Type: R.C. BOX
Features Intersected: BATTEN KILL RIVER
Surface: Bituminous
Maintenance/Ownership: State

Culvert 46:
Culvert - 1959
Structure No. 300019004602031
Length: 17'
Width: 47.5'
Under Clearance: 6.0'
Facility Carried: US7
Bridge Type: RC BOX
Features Intersected: BROOK
Surface: Bituminous
Maintenance: State

Culvert 47:
Culvert - 1937
Structure No. 300019004702031
Length: 11'
Under Clearance: 3.5'
Facility Carried: US7
Bridge Type: RC BOX
Features Intersected: BROOK
Maintenance: State

Bridge 52:
Stringer/multi-beam or girder - 1935
Structure No. 200019005202032
Length: 145'
Width: 29.9'
Under Clearance: 19.75'
Facility Carried: US 00007 ML
Bridge Type: 3-SPN RLD BMFLBM
Features Intersected: US 7 OVER VT RR
Surface: Bituminous
Maintenance/Ownership: State

Culvert 53:
Culvert - 1936
Structure No. 300019005302031
Length: 8'
Under Clearance: 5.0'
Facility Carried: US7
Bridge Type: RC BOX
Features Intersected: BROOK
Maintenance: State

Bridge 54:
Girder and floorbeam system - 1966
Structure No. 200019005402032
Length: 230'
Width: 30.0'
Under Clearance: 22.33'
Facility Carried: US 00007 ML
Bridge Type: 3 SPAN RLD BMFLBM
Features Intersected: US 7 OVER VT RR
Surface: Bituminous
Maintenance/Ownership: State

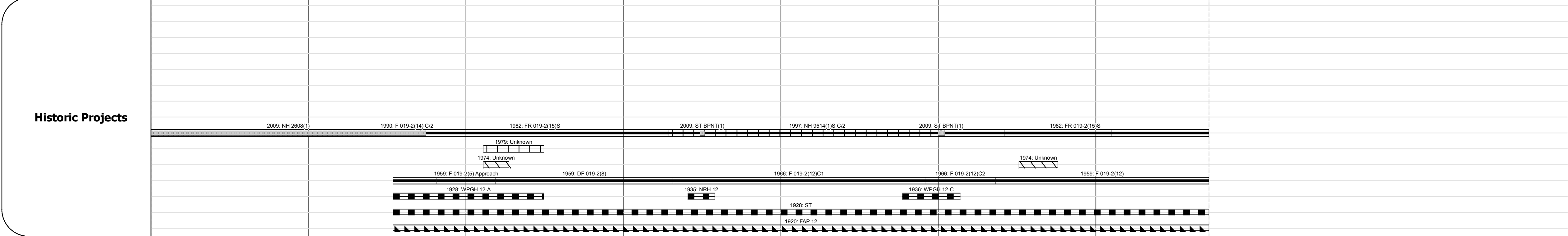
Culvert 55:
Culvert - 1936
Structure No. 300019005502031
Length: 8'
Under Clearance: 7.0'
Facility Carried: US7
Bridge Type: RC BOX
Features Intersected: OTTER CREEK
Maintenance: State

Bridge 56:
Slab - 1966
Structure No. 300019005602031
Length: 12'
Width: 53.4'
Under Clearance: 4.0'
Facility Carried: US7
Bridge Type: CONCRETE SLAB
Features Intersected: GULF BROOK
Surface: Bituminous
Maintenance: State

Road Widths	Travellane	Roadway	Lane Count	Base	Subbase
	35	24	35	47	58
	47	44	49	75	83
	3	2	3	4	4
				5" Plant Mix	5" P.M.
				24" Crushed Gravel	24" Cr. Gr.
					20" S.B.
					3" Pen. Macadam Crushed Gravel
					20" Gravel
					20" S.B.

Curves	2	2	4	3	2.3	2.3	4	3.2	4	4
--------	---	---	---	---	-----	-----	---	-----	---	---

Grades	-3.07									
--------	-------	--	--	--	--	--	--	--	--	--



Maintenance Garage	District 1 - East Dorset Garage
--------------------	---------------------------------

Traffic Counters	568304	568100
------------------	--------	--------

Functional Class	2
------------------	---

Speed Zone	55	40	45
------------	----	----	----

ADT Counts	2012	2400	4700	3800
	2011	2500	4900	3900
	2010	2500	5000	4000
	2009	2600	5100	4100
	2008	2600	5200	4100

Crash Locations	2012	2011	2010	2009	2008

<p>Historic Projects</p> <ul style="list-style-type: none"> Retreatment Resurface Unknown Bituminous Mix Skimny Mix Bituminous Seal Gravel Surface Treated Gravel Plant Mix Reclaimed Base and Bituminous Concrete Concrete 	<p>Functional Class</p> <ul style="list-style-type: none"> 1 2 6 11 12 14 16 17 19 <p>Speed Zones</p> <ul style="list-style-type: none"> 25 30 35 40 45 50 55 60 65 	<p>Curves</p> <ul style="list-style-type: none"> Left Right <p>Grades</p> <ul style="list-style-type: none"> grade up grade down 	<p>Road Widths</p> <p>(ft)</p>	<p>Traffic Counters</p> <p>(counter ID)</p>	<p>Crash Locations</p> <ul style="list-style-type: none"> Fatal Injury Property Damage Only Unknown Crash Type 	<p>Mileage by Functional Class By Sheet</p> <p>019-2 2 - Rural - Principal Arterial 6.718</p>	<p>Mileage by Town By Sheet</p> <p>DORSET - U007-0203 6.718 of 6.718</p>	<p>DISTRICT</p> <p>1</p>	<p>TOWN</p> <p>DORSET</p>	<p>Date: 05/22/14</p>	<p>ROUTE</p> <p>US-7</p> <p>ETE mileage: 37.36 to 44.078</p>
<p>Total Mileage: 6.718 mi</p>							<p>Total Mileage: 6.718 mi</p>				