

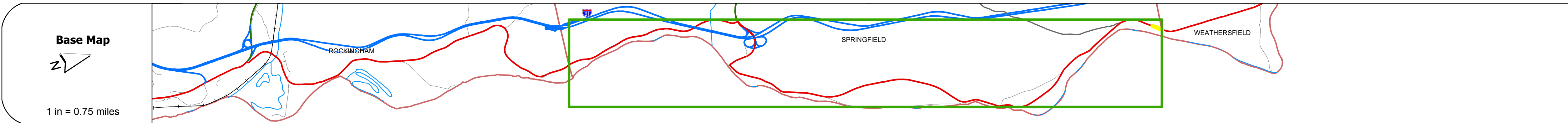
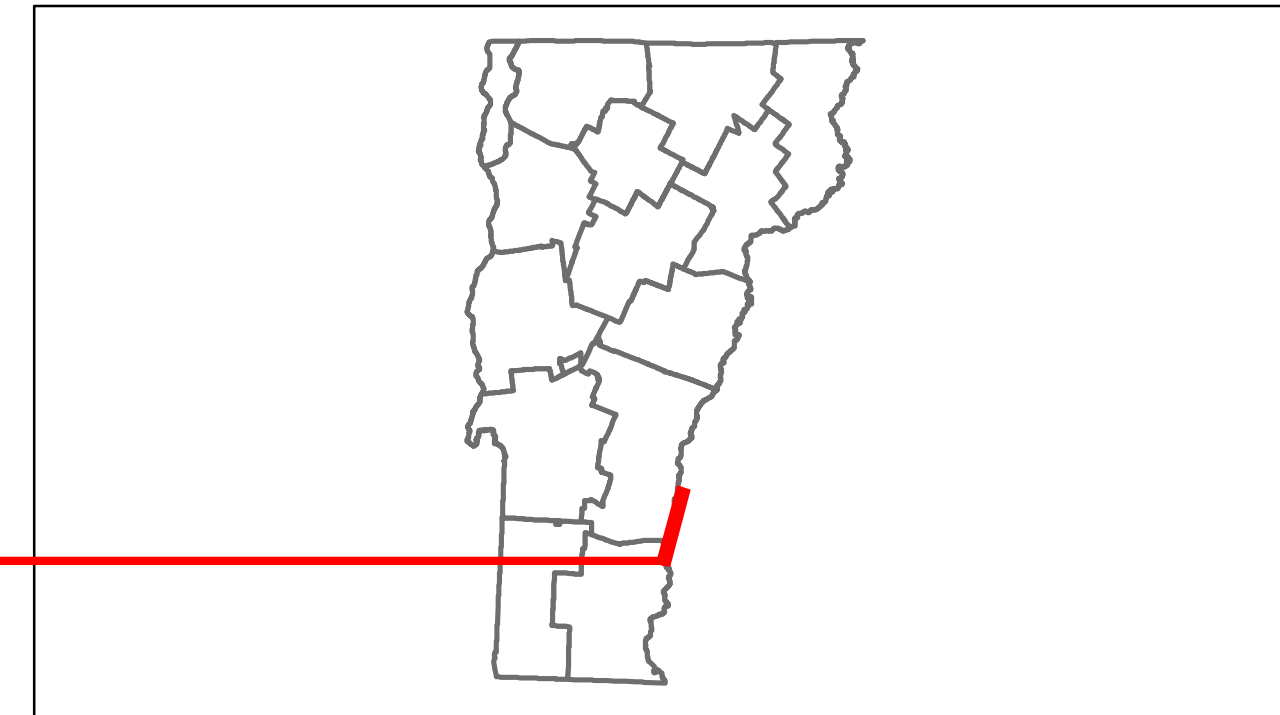


Route Log Progress Chart

DRAFT

Please Note: Errors and Omissions May Exist.
Contact the VTrans Mapping Unit with questions or concerns.

DISTRICT	TOWN	ROUTE
2	SPRINGFIELD	US-5



Road Widths	Travellane: 18'
	Roadway: 24'
	Lane Count: 2
	Base: 24'-25'
	Subbase: 24'-25'

Curves	
---------------	--

Grades	
---------------	--

Historic Projects	
--------------------------	--

Maintenance Garage	
---------------------------	--

Traffic Counters	
-------------------------	--

Functional Class	7
-------------------------	---

Speed Zone	
-------------------	--

AADT Counts	2012: 960
	2011: 970
	2010: 970
	2009: 980
	2008: 990

Crash Locations	2012
	2011
	2010
	2009
	2008

DESCRIPTION BLOCK

Historic Projects Retreatment, Resurface, Unknown, Bituminous Mix, Skimmy Mix, Bituminous Seal, Bituminous Concrete, Concrete, Gravel, Surface Treated Gravel, Plant Mix, Reclaimed Base and Bituminous Concrete	Functional Class Legend for Functional Classes 1-19 and Speed Zones 25-65.	Curves Left, Right	Grades grade up, grade down	Road Widths (ft)	Traffic Counters (counter ID)	AADT (count)	Crash Locations Fatal, Injury, Property Damage Only, Unknown Crash Type	Mileage by Functional Class By Sheet 0113 7 - Rural - Major collector 0.118	Mileage by Town By Sheet SPRINGFIELD - U005-1418 0.118 of 9.118	DISTRICT 2	TOWN SPRINGFIELD	Date: 05/22/14	ROUTE US-5 ETE mileage: 49.414 to 49.532
								Total Mileage: 0.118 mi	Total Mileage: 0.118 mi	2 of 2 TWN mileage: 9.0 to 9.118			