

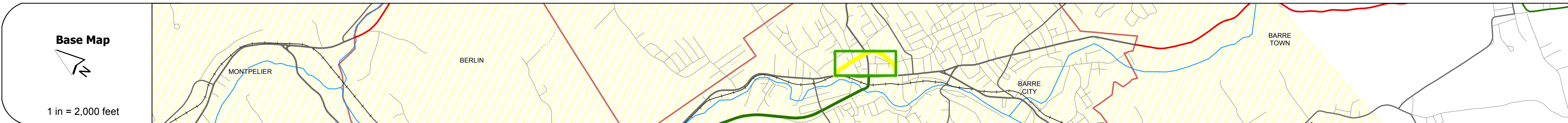
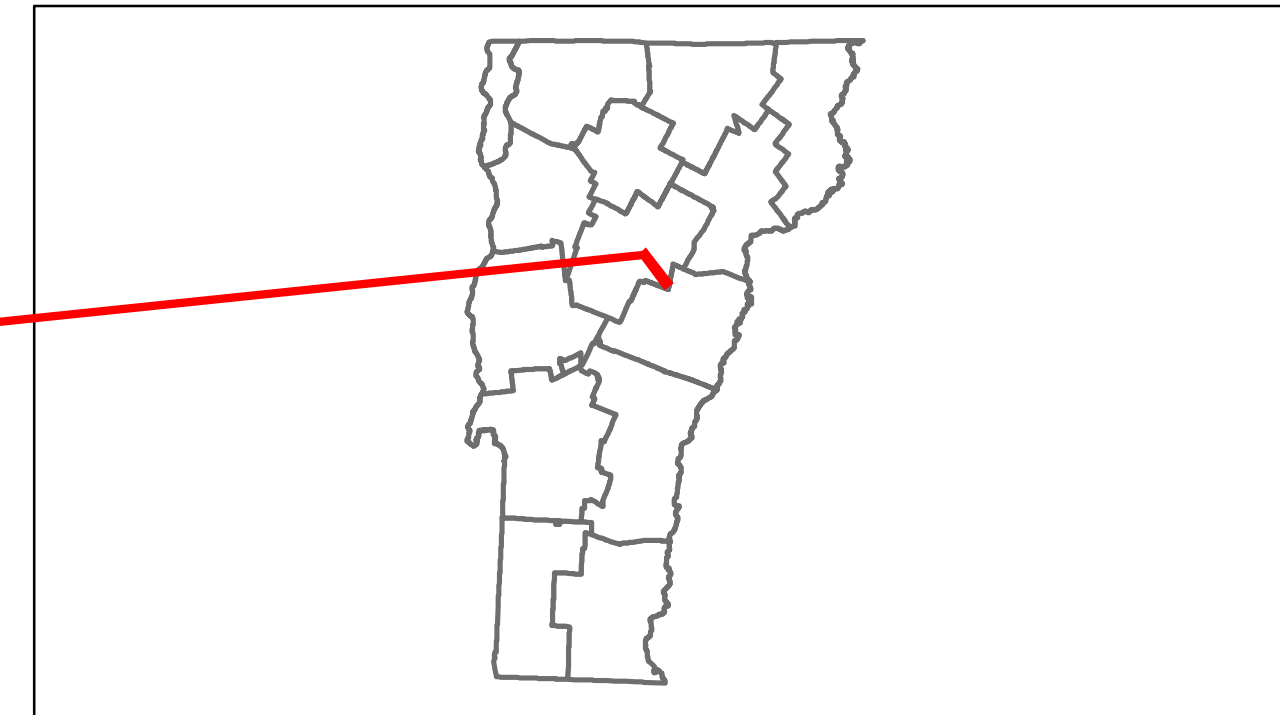


Route Log Progress Chart

DRAFT

Please Note: Errors and Omissions May Exist.
Contact the VTrans Mapping Unit with questions or concerns.

DISTRICT	TOWN	ROUTE
6	BARRE CITY	Min-6026



Stick Diagram

- Town Boundary
- Village/UC Boundaries
- District Boundaries
- State/Town Highway Change
- Divided Highway Limits
- Ghost Section Boundary
- FAU Limits
- Streams
- Town Center
- Primary Structures
- Secondary Structures
- Stations (Feet)
- Railroad Crossings
- Divided State Highway
- State Highway
- Divided Class 1 Town Highway
- Class 1 Town Highway

Scale: 1 INCH = 2000 FEET



Road Widths

Travellane: 30, 37, 34, 34, 28, 37, 40
 Roadway: 30, 37, 34, 34, 30, 37, 35
 Lane Count
 Base
 Subbase

Curves	
--------	--

Grades	
--------	--

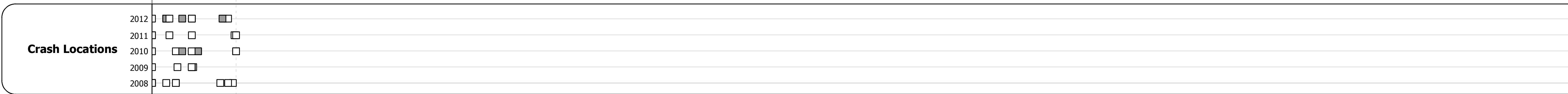
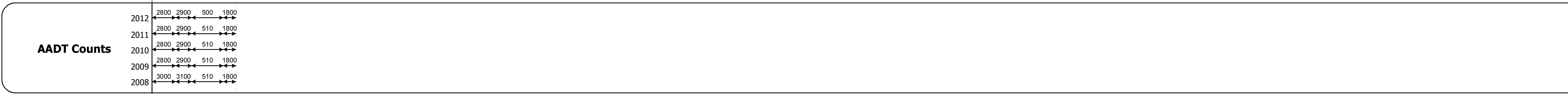
Historic Projects	
1979: Unknown	

Maintenance Garage	(Not State Maintained)
--------------------	------------------------

Traffic Counters	SEV282 SEV060 SEV079 SEV290
------------------	-----------------------------

Functional Class	17
------------------	----

Speed Zone	
------------	--



DESCRIPTION BLOCK

Bridge 4:
 Slab - 1919
 Structure No. 206026000412012
 Length: 25'
 Width: 46.0'
 Weight Limit: 0
 Facility Carried: CITY SEMNY
 Bridge Type: CONCRETE SLAB
 Features Intersected: GUNNERS BROOK
 Surface: Bituminous
 Maintenance/Ownership: City/Municipal

Historic Projects Retreatment, Resurface, Unknown, Bituminous Mix, Skimmy Mix, Bituminous Seal, Bituminous Concrete, Concrete, Gravel, Surface Treated Gravel, Plant Mix, Reclaimed Base and Bituminous Concrete	Functional Class 1, 2, 6, 7, 8, 11, 12, 14, 16, 17, 19	Curves Left, Right	Road Widths Traffic Counters (counter ID)	AADT Crash Locations: Fatal, Injury, Property Damage Only, Unknown Crash Type	Mileage by Functional Class By Sheet 6026 17 - Urban - collector 0.530	Mileage by Town By Sheet BARRE CITY - S60261201 0.53 of 0.53	DISTRICT 6	TOWN BARRE CITY	Date: 05/22/14	ROUTE Min-6026 ETE mileage: 0.0 to 0.53
Total Mileage: 0.530 mi						Total Mileage: 0.53 mi				