

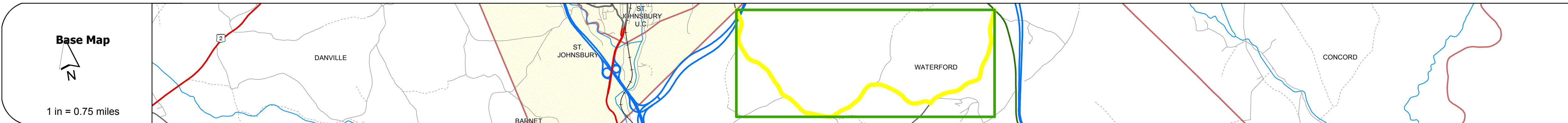
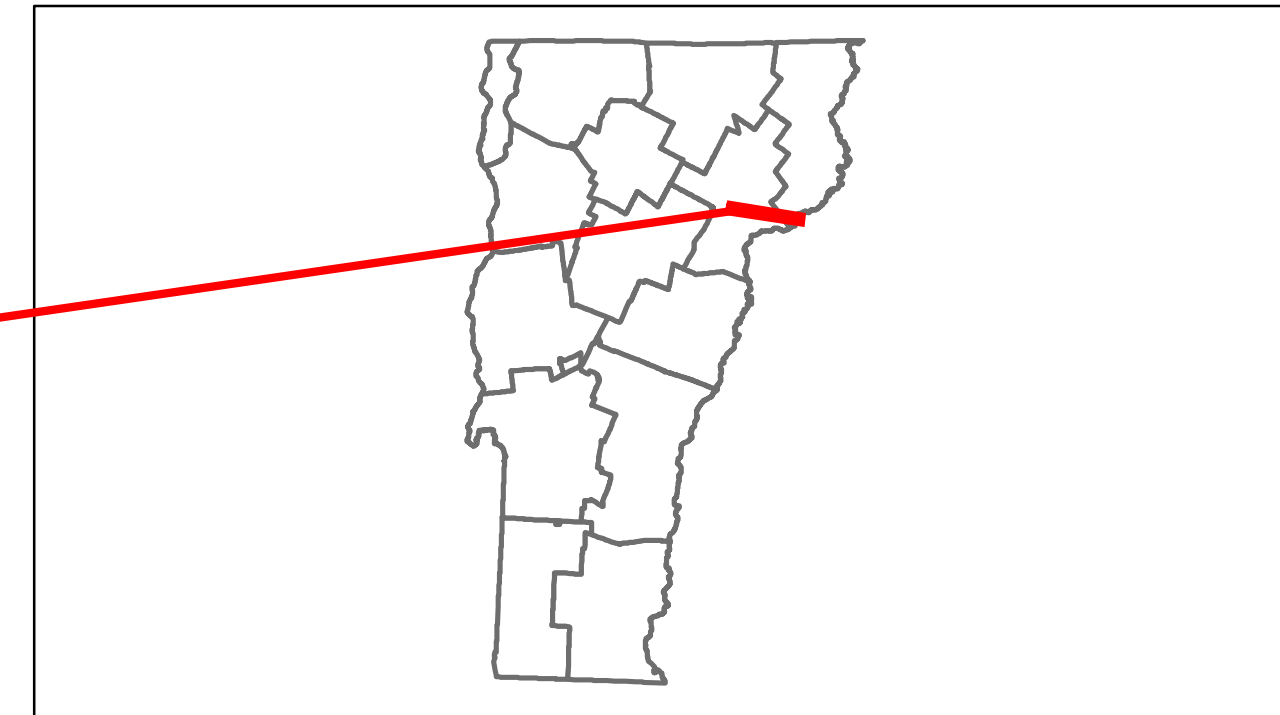


# Route Log Progress Chart

**DRAFT**

Please Note: Errors and Omissions May Exist.  
Contact the VTrans Mapping Unit with questions or concerns.

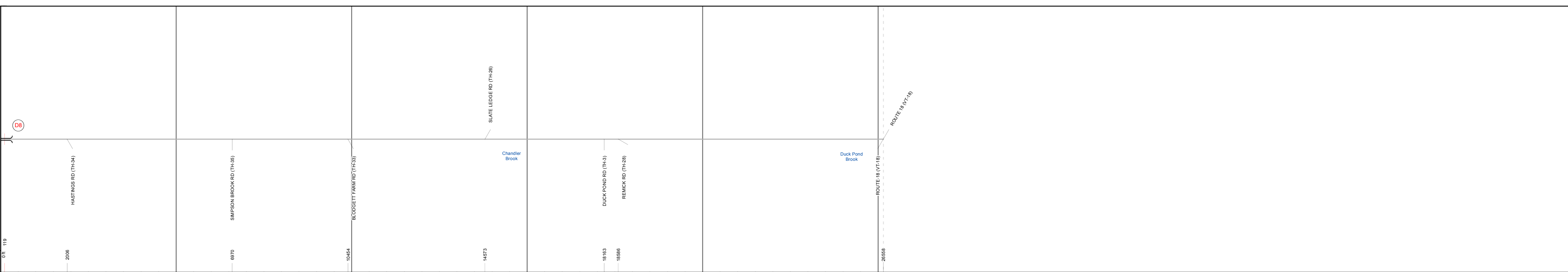
DISTRICT	TOWN	ROUTE
7	WATERFORD	Min-0738



**Stick Diagram**

- Town Boundary
- Village/UC Boundaries
- District Boundaries
- State/Town Highway Change
- Divided Highway Limits
- Ghost Section Boundary
- FAU Limits
- Streams
- Town Center
- Primary Structures
- Secondary Structures
- Stations (Feet)
- Railroad Crossings
- Divided State Highway
- State Highway
- Divided Class 1 Town Highway
- Class 1 Town Highway

Scale: 1 INCH = 2000 FEET



## DESCRIPTION BLOCK

**Bridge D8:**  
Stringer/multi-beam or girder - 1982  
Structure No. 20031600D803161  
Length: 306'  
Width: 30.0'  
Under Clearance: 16.58'  
Facility Carried: TR 00TH4  
Bridge Type: 2 SP CONT WLD PL GIR  
Features Intersected: TH NO 4 OVER I 93  
Surface: Epoxy overlay  
Maintenance/Ownership: State

<b>Road Widths</b>	Travellane	Roadway	Lane Count	Base	Subbase
--------------------	------------	---------	------------	------	---------

<b>Curves</b>					
---------------	--	--	--	--	--

<b>Grades</b>					
---------------	--	--	--	--	--

<b>Historic Projects</b>					
--------------------------	--	--	--	--	--

<b>Maintenance Garage</b>			(Not State Maintained)		
---------------------------	--	--	------------------------	--	--

<b>Traffic Counters</b>	0	56C322	56C365	56C205	
-------------------------	---	--------	--------	--------	--

<b>Functional Class</b>	8				
-------------------------	---	--	--	--	--

<b>Speed Zone</b>					
-------------------	--	--	--	--	--

<b>ADT Counts</b>	2012				
	2011				
	2010				
	2009				
	2008				

<b>Crash Locations</b>	2012				
	2011				
	2010				
	2009				
	2008				

<p><b>Historic Projects</b></p> <ul style="list-style-type: none"> <li>Retreatment</li> <li>Resurface</li> <li>Unknown</li> <li>Bituminous Mix</li> <li>Skimny Mix</li> <li>Bituminous Seal</li> <li>Gravel</li> <li>Surface Treated Gravel</li> <li>Plant Mix</li> <li>Reclaimed Base and Bituminous Concrete</li> <li>Concrete</li> </ul>	<p><b>Functional Class</b></p> <ul style="list-style-type: none"> <li>1</li> <li>2</li> <li>6</li> <li>7</li> <li>8</li> <li>11</li> <li>12</li> <li>14</li> <li>16</li> <li>17</li> <li>19</li> </ul> <p><b>Speed Zones</b></p> <ul style="list-style-type: none"> <li>25</li> <li>30</li> <li>35</li> <li>40</li> <li>45</li> <li>50</li> <li>55</li> <li>60</li> <li>65</li> </ul>	<p><b>Curves</b></p> <ul style="list-style-type: none"> <li>Left</li> <li>Right</li> </ul> <p><b>Grades</b></p> <ul style="list-style-type: none"> <li>grade up</li> <li>grade down</li> </ul>	<p><b>Road Widths</b></p> <p>(ft)</p>	<p><b>Traffic Counters</b></p> <p>(counter ID)</p>	<p><b>Crash Locations</b></p> <ul style="list-style-type: none"> <li>Fatal</li> <li>Injury</li> <li>Property Damage Only</li> <li>Unknown Crash Type</li> </ul>	<p><b>Mileage by Functional Class By Sheet</b></p> <p>0738 8 - Rural - Minor collector 5.030</p> <p><b>Total Mileage: 5.030 mi</b></p>	<p><b>Mileage by Town By Sheet</b></p> <p>WATERFORD - S07380316 5.03 of 5.03</p> <p><b>Total Mileage: 5.03 mi</b></p>	<p><b>DISTRICT</b></p> <p>7</p>	<p><b>TOWN</b></p> <p>WATERFORD</p>	<p><b>Date:</b> 05/21/14</p> <p><b>1 of 1</b></p> <p>TWN mileage: 0.0 to 5.03</p>	<p><b>ROUTE</b></p> <p>Min-0738</p> <p>ETE mileage: 0.0 to 5.03</p>
---	---	--	---------------------------------------	--	---	--	---	---------------------------------	-------------------------------------	---	---