

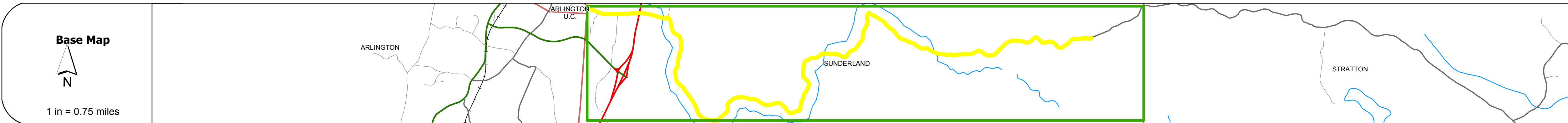
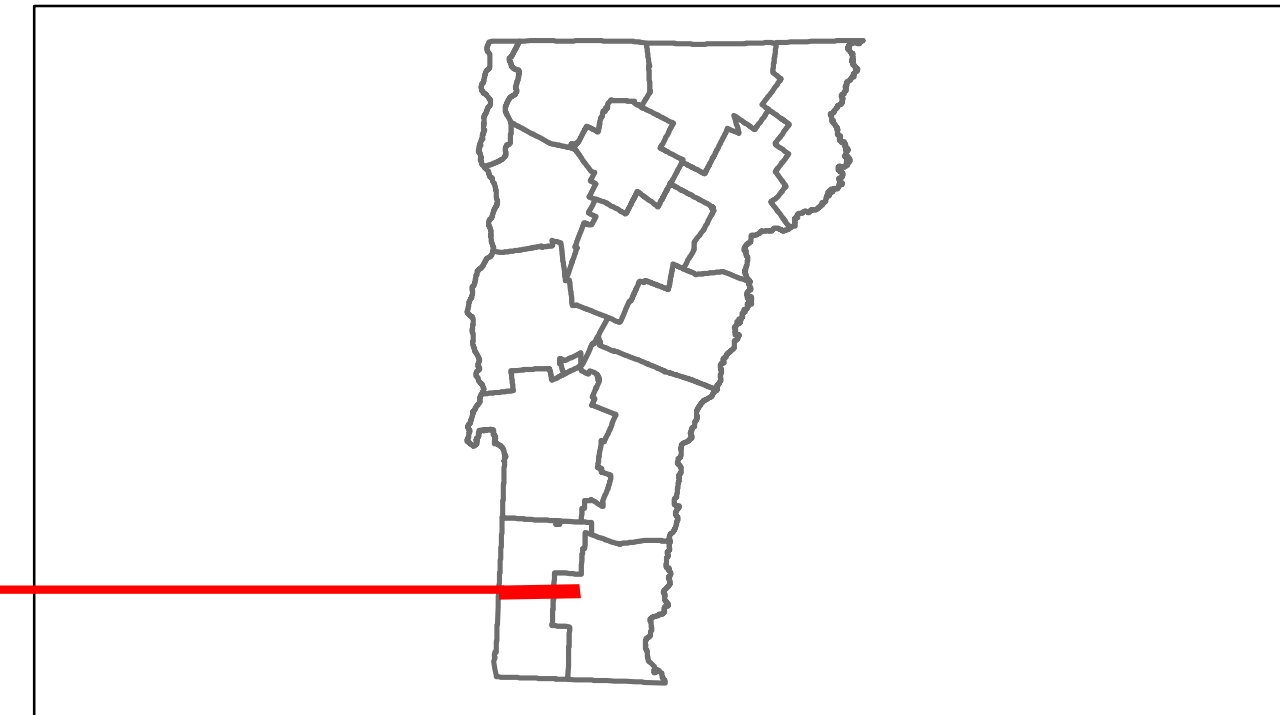


Route Log Progress Chart

DRAFT

Please Note: Errors and Omissions May Exist.
Contact the VTrans Mapping Unit with questions or concerns.

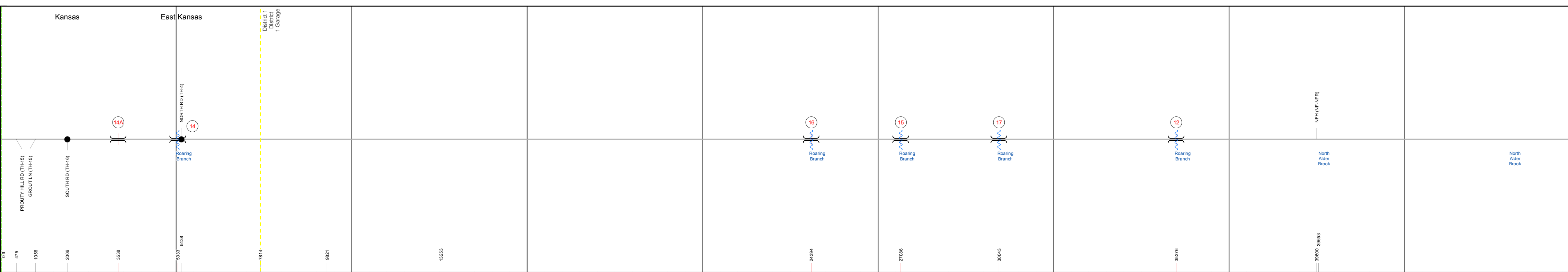
DISTRICT	TOWN	ROUTE
1	SUNDERLAND	Maj-0114



Stick Diagram

- Town Boundary
- Village/UC Boundaries
- District Boundaries
- State/Town Highway Change
- Divided Highway Limits
- Ghost Section Boundary
- FAU Limits
- Streams
- Town Center
- Primary Structures
- Secondary Structures
- Stations (Feet)
- Railroad Crossings
- Divided State Highway
- State Highway
- Divided Class 1 Town Highway
- Class 1 Town Highway

Scale: 1 INCH = 2000 FEET



DESCRIPTION BLOCK

Bridge 14A:
Stringer/multi-beam or girder - 1982
Structure No. 200114014A02152
Length: 108'
Width: 34.0'
Under Clearance: 16.42'
Facility Carried: TR 03 FAS 114
Bridge Type: WELDED PLATE GIRDER
Features Intersected: US 7 UNDER FAS 114 TR3
Surface: Bituminous
Maintenance/Ownership: State

Bridge 14:
Stringer/multi-beam or girder - 2006
Structure No. 200114001402152
Length: 89'
Width: 21.8'
Facility Carried: TR 03 FAS 114
Bridge Type: CURVED WLD PLT GIRD
Features Intersected: ROARING BRANCH BROOK
Maintenance/Ownership: Town

Bridge 16:
Stringer/multi-beam or girder - 1935
Structure No. 200114001602152
Length: 61'
Width: 11.7'
Facility Carried: TR 03 FAS 114 FH6
Bridge Type: ROLLED BM W TIM DK
Features Intersected: ROARING BRANCH BROOK
Surface: Timber
Maintenance/Ownership: Town

Bridge 15:
Stringer/multi-beam or girder - 1939
Structure No. 200114001502152
Length: 94'
Width: 11.8'
Facility Carried: TR 03 FAS 114 FH6
Bridge Type: ROLLED BEAM
Features Intersected: ROARING BRANCH BROOK
Maintenance/Ownership: Town

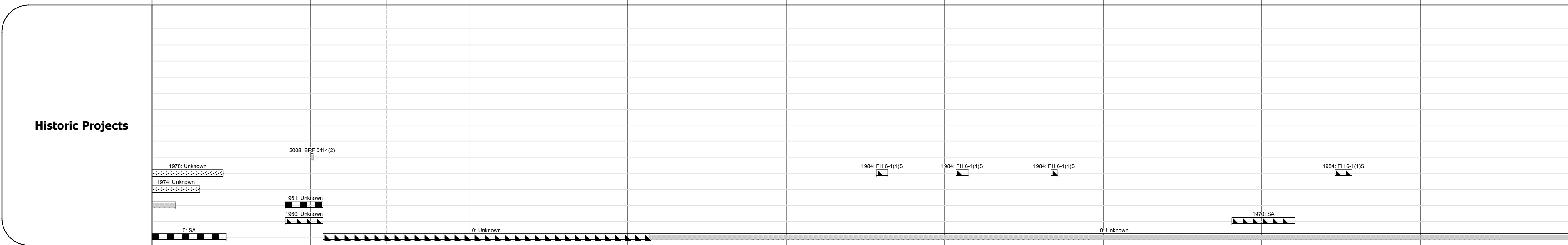
Bridge 17:
Stringer/multi-beam or girder - 1935
Structure No. 200114001702152
Length: 59'
Width: 12.0'
Facility Carried: TR 03 FAS 114 FH6
Bridge Type: ROLLED BM W TIM DK
Features Intersected: ROARING BRANCH BROOK
Surface: Timber
Maintenance/Ownership: Town

Bridge 12:
Stringer/multi-beam or girder - 1966
Structure No. 200114001202152
Length: 37'
Width: 24.1'
Facility Carried: TR 03 FAS 114 FH6
Bridge Type: ROLLED BEAM
Features Intersected: ROARING BRANCH BROOK
Maintenance/Ownership: Town

Travellane	20	22	20	16	14	12	12	12	12	12	14	24	14	12
Roadway	22	34	22	16	14	12	12	12	12	12	14	24	14	12
Lane Count														
Base														
Subbase														

Curves	2	21				24	10	70	15		12			
--------	---	----	--	--	--	----	----	----	----	--	----	--	--	--

Grades														
--------	--	--	--	--	--	--	--	--	--	--	--	--	--	--



Maintenance Garage														
--------------------	--	--	--	--	--	--	--	--	--	--	--	--	--	--

Traffic Counters	560380265	560380262				5603825							5603828	
------------------	-----------	-----------	--	--	--	---------	--	--	--	--	--	--	---------	--

Functional Class	7													
------------------	---	--	--	--	--	--	--	--	--	--	--	--	--	--

Speed Zone														
------------	--	--	--	--	--	--	--	--	--	--	--	--	--	--

AADT Counts	2012	940	950			90							50	
	2011	930	940			90							50	
	2010	970	910			90							60	
	2009	1000	870			90							60	
	2008	1100	840			90							70	

Crash Locations	2012													
	2011													
	2010													
	2009													
	2008													

Historic Projects Retreatment, Resurface, Unknown, Bituminous Mix, Skimmy Mix, Bituminous Seal, Bituminous Concrete, Surface Treated Gravel, Plant Mix, Reclaimed Base and Bituminous Concrete, Concrete	Functional Class 1, 2, 3, 4, 5, 6, 7, 8, 9, 10, 11, 12, 13, 14, 15, 16, 17, 18, 19	Curves Left, Right	Road Widths (ft)	Traffic Counters (counter ID)	AADT (count)	Crash Locations Fatal, Injury, Property Damage Only, Unknown Crash Type	Mileage by Functional Class By Sheet 0114 7 - Rural - Major collector 9.000	Mileage by Town By Sheet SUNDERLAND - S01140215 9.0 of 9.8	DISTRICT 1	TOWN SUNDERLAND	Date: 05/21/14	ROUTE Maj-0114 ETE mileage: 1.48 to 10.48
						Total Mileage: 9.000 mi		Total Mileage: 9.0 mi				