

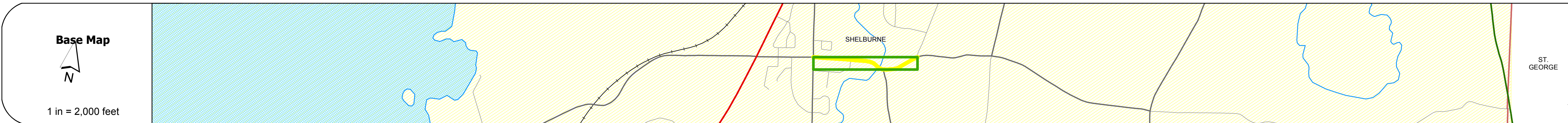
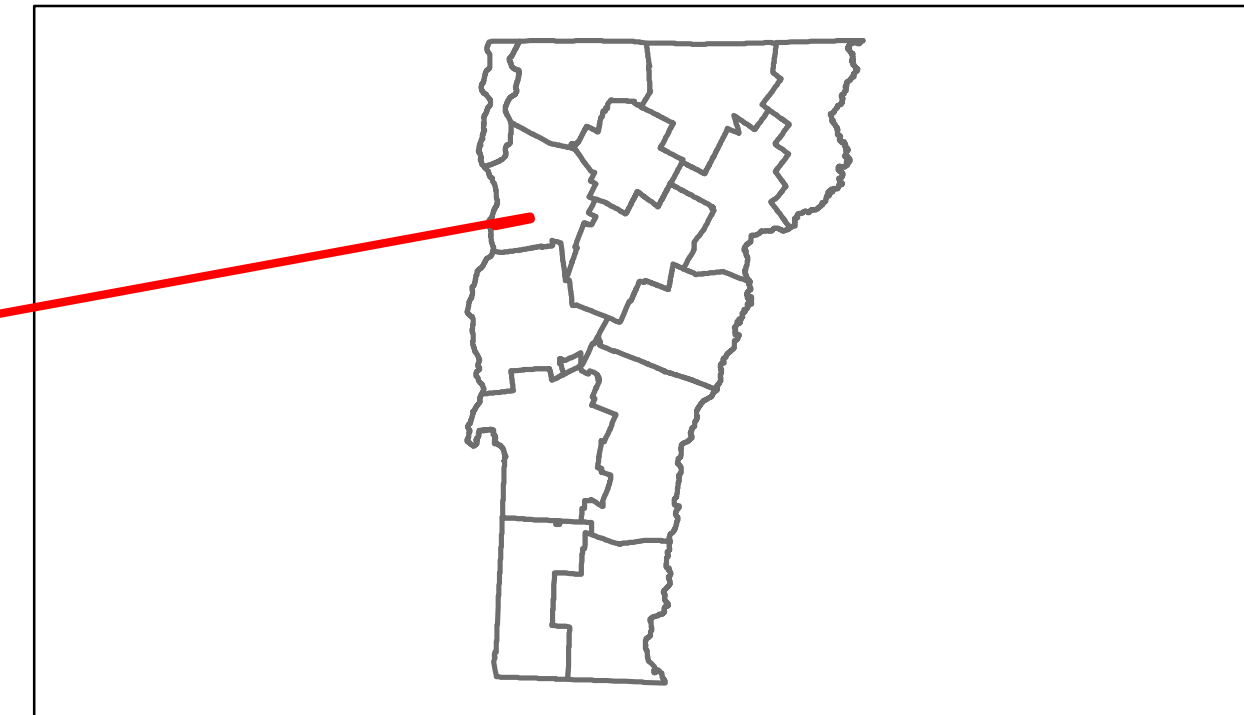


Route Log Progress Chart

DRAFT

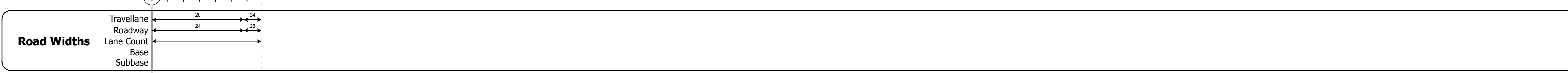
Please Note: Errors and Omissions May Exist.
Contact the VTrans Mapping Unit with questions or concerns.

DISTRICT	TOWN	ROUTE
5	SHELBURNE	Urb-5712



DESCRIPTION BLOCK

Bridge 6:
Stringer/multi-beam or girder - 1988
Structure No. 205712000604132
Length: 54'
Width: 33.0'
Facility Carried: TR 02 FALLS ROAD
Bridge Type: ROLLED BEAM
Features Intersected: LAPLATTE RIVER
Surface: Bituminous
Maintenance/Ownership: Town



Curves	
--------	--

Grades	
--------	--

Historic Projects	
-------------------	--

Maintenance Garage	(Not State Maintained)
--------------------	------------------------

Traffic Counters	860341
------------------	--------

Functional Class	17
------------------	----

Speed Zone	
------------	--

ADT Counts	2012: 4400 2011: 4400 2010: 4400 2009: 4400 2008: 5300
------------	--

Crash Locations	2012: 3 2011: 1 2010: 1 2009: 1 2008: 0
-----------------	---

Historic Projects Retreatment, Resurface, Unknown, Bituminous Mix, Skippy Mix, Bituminous Seal, Concrete, Gravel, Surface Treated Gravel, Plant Mix, Reclaimed Base and Bituminous Concrete, Concrete	Functional Class 1, 2, 6, 7, 8, 11, 12, 14, 16, 17, 19	Curves curve left, curve right	Road Widths (ft)	ADT (count)	Mileage by Functional Class By Sheet 5712 17 - Urban - collector 0.690	Mileage by Town By Sheet SHELBURNE - 557120413 0.69 of 0.69	DISTRICT 5	TOWN SHELBURNE	Date: 11/15/13	ROUTE Urb-5712 ETE mileage: 0.0 to 0.69
Speed Zones 25, 30, 35, 40, 45, 50, 55, 60, 65	Grades grade up, grade down	Traffic Counters (counter ID)	Crash Locations Fatal, Injury, Property Damage Only, Unknown Crash Type	Total Mileage: 0.690 mi	Total Mileage: 0.69 mi	1 of 1 TWN mileage: 0.0 to 0.69				