

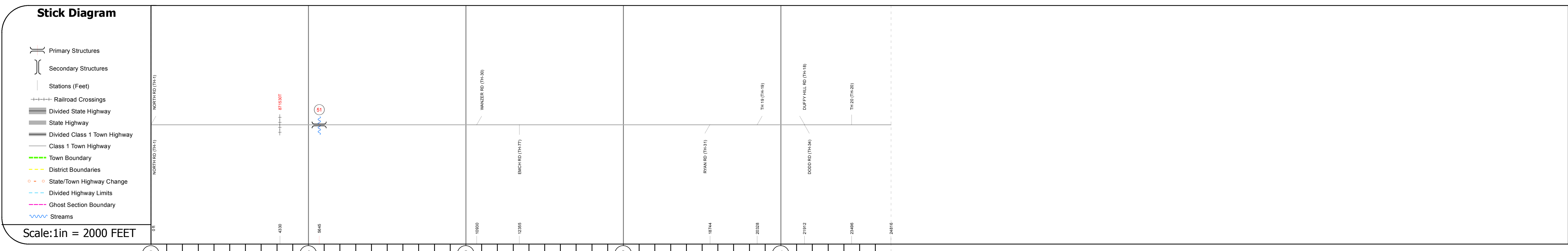
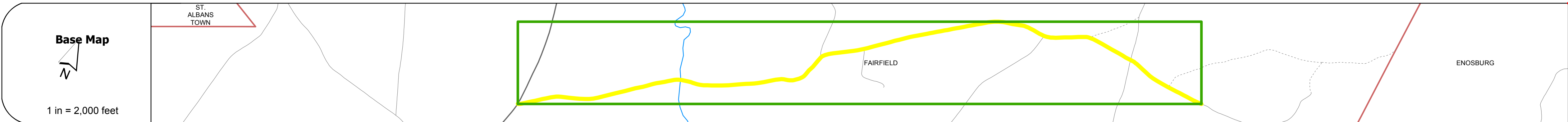
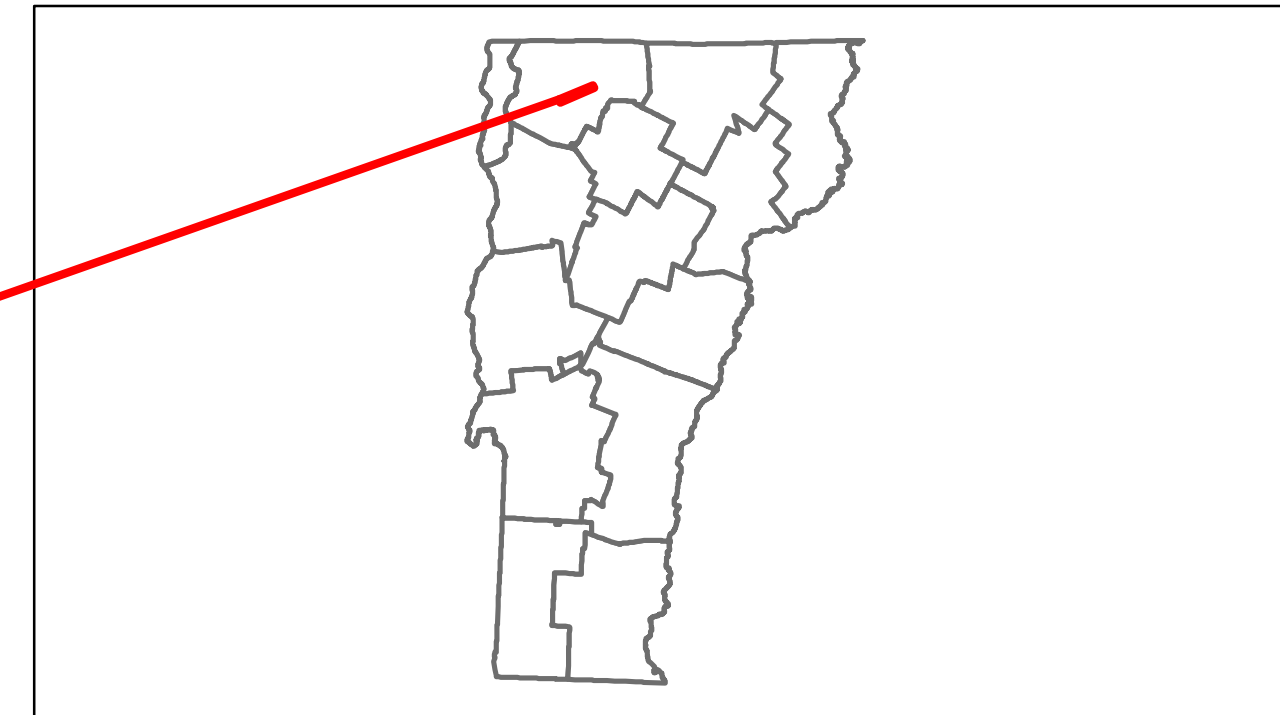


Route Log Progress Chart

DRAFT

Please Note: Errors and Omissions May Exist.
Contact the VTrans Mapping Unit with questions or concerns.

| | | |
|----------|-----------|----------|
| DISTRICT | TOWN | ROUTE |
| 8 | FAIRFIELD | Min-0792 |



DESCRIPTION BLOCK

Bridge 51:
Stringer/multi-beam or girder - 1937
Structure No. 100605005106051
Length: 90'
Width: 17.9'
Facility Carried: C2002
Bridge Type: ROLLED BEAM
Features Intersected: BLACK CREEK
Surface: Bituminous
Maintenance/Ownership: Town

| | | | | | | | | | |
|---------------------------|------------|--------|------------------------|--------|--|--|--------|--|--|
| Road Widths | Travellane | | | | | | | | |
| | Roadway | | | | | | | | |
| | Lane Count | | | | | | | | |
| | Base | | | | | | | | |
| | Subbase | | | | | | | | |
| Curves | | | | | | | | | |
| Grades | | | | | | | | | |
| Historic Projects | | | | | | | | | |
| Maintenance Garage | | | (Not State Maintained) | | | | | | |
| Traffic Counters | | S8F350 | | S8F375 | | | S8F501 | | |
| Functional Class | | 8 | | | | | | | |
| Speed Zone | | | | | | | | | |
| AADT Counts | 2012 | | | | | | | | |
| | 2011 | | | | | | | | |
| | 2010 | | | | | | | | |
| | 2009 | | | | | | | | |
| | 2008 | | | | | | | | |
| Crash Locations | 2012 | | | | | | | | |
| | 2011 | | | | | | | | |
| | 2010 | | | | | | | | |
| | 2009 | | | | | | | | |
| | 2008 | | | | | | | | |

| | | | | | | | | | | |
|---|--|--|----------------------------|------------------------|---|---|----------------------|--|-----------------------|--------------------------|
| Historic Projects Retreatment, Resurface, Unknown, Bituminous Mix, Skirny Mix, Bituminous Seal, Gravel, Surface Treated Gravel, Plant Mix, Reclaimed Base and Bituminous Concrete, Concrete | Functional Class 1, 2, 3, 4, 5, 6, 7, 8, 9, 10, 11, 12, 13, 14, 15, 16, 17, 18, 19 | Curves curve left, curve right | Road Widths (ft) | AADT (count) | Mileage by Functional Class By Sheet 0792 8 - Rural - Minor collector 4.700 | Mileage by Town By Sheet FAIRFIELD - S07920605 4.7 of 4.7 | DISTRICT 8 | TOWN FAIRFIELD | Date: 11/15/13 | ROUTE Min-0792 |
| Crash Locations Fatal, Injury, Property Damage Only, Unknown Crash Type | | | | | | Total Mileage: 4.700 mi | | 1 of 1 TWN mileage: 0.0 to 4.7 | | ETE mileage: 0.0 to 4.7 |