

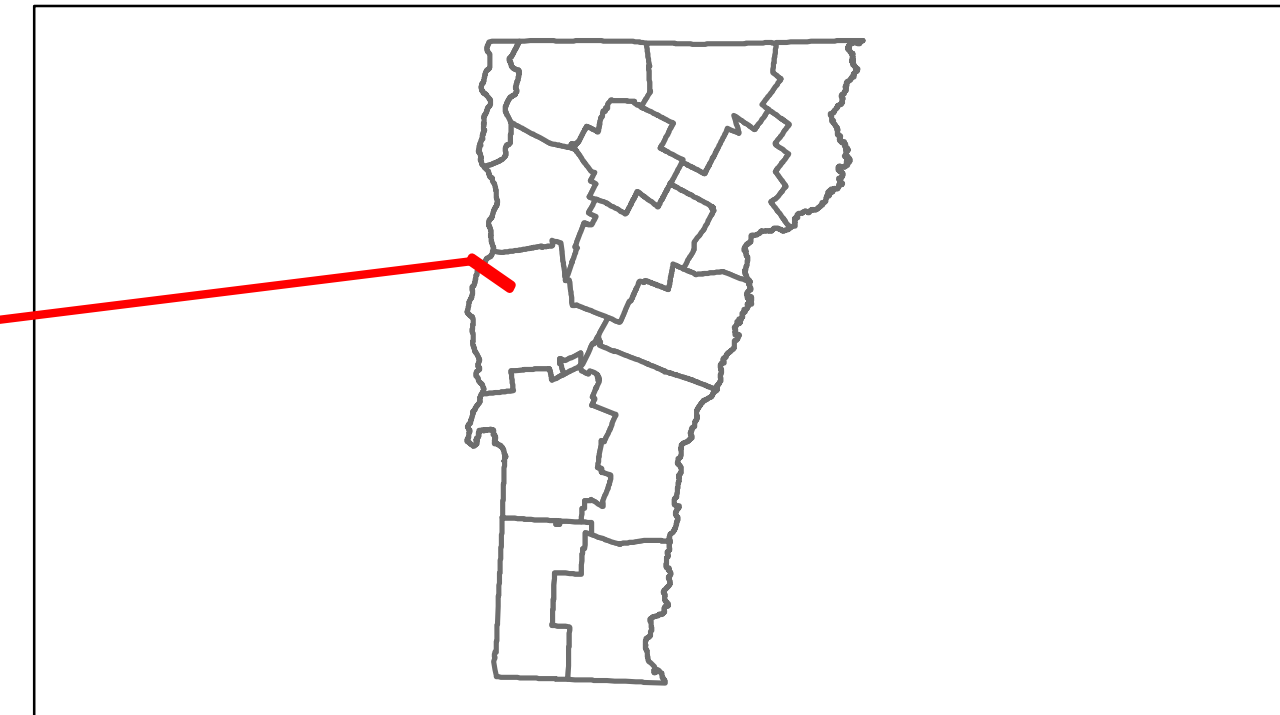


# Route Log Progress Chart

**DRAFT**

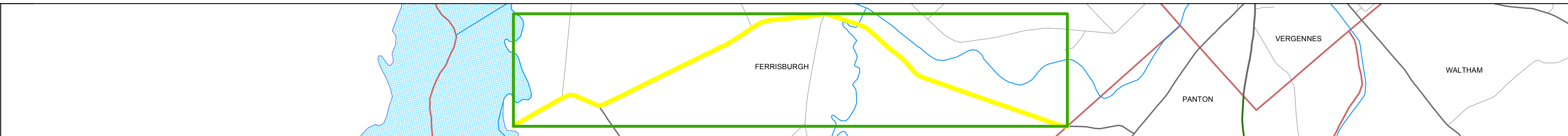
Please Note: Errors and Omissions May Exist.  
Contact the VTrans Mapping Unit with questions or concerns.

DISTRICT	TOWN	ROUTE
5	FERRISBURGH	Maj-0186



**Base Map**

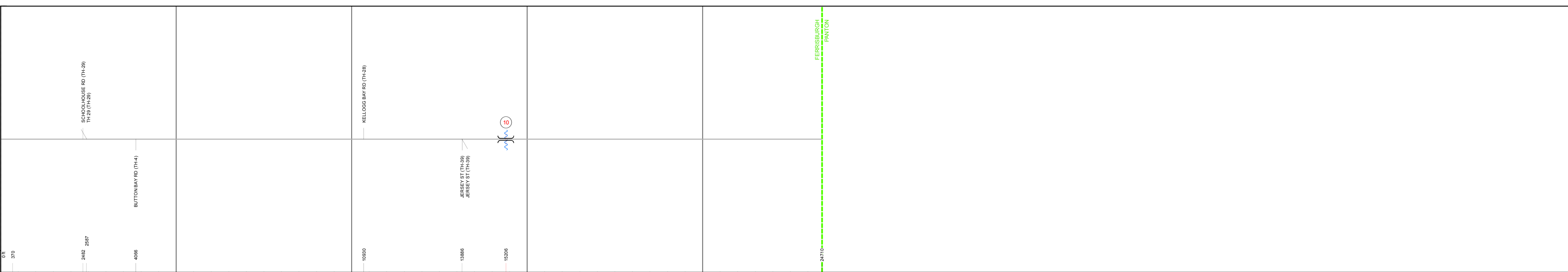
1 in = 0.5 miles



**Stick Diagram**

- Primary Structures
- Secondary Structures
- Stations (Feet)
- Railroad Crossings
- Divided State Highway
- State Highway
- Divided Class 1 Town Highway
- Class 1 Town Highway
- Class 2 Town Highway
- Town Boundary
- District Boundaries
- State/Town Highway Change
- Divided Highway Limits
- Ghost Section Boundary
- Streams

Scale: 1in = 2000 FEET



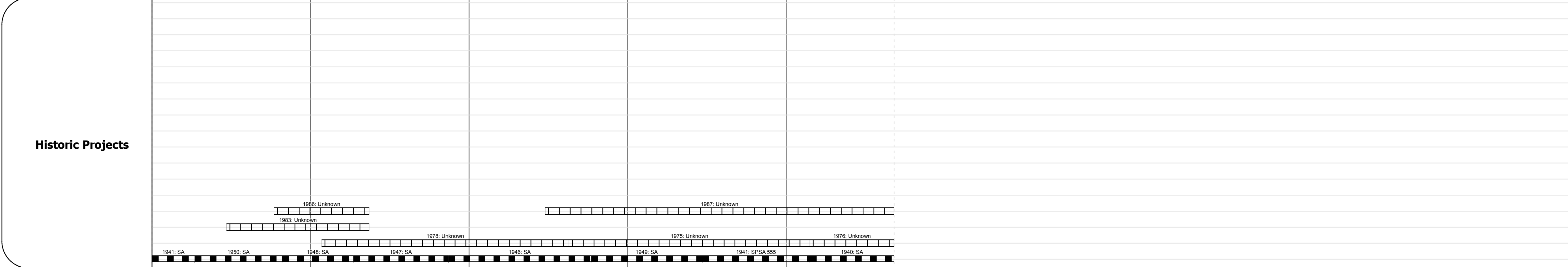
## DESCRIPTION BLOCK

**Bridge 10:**  
 Stringer/multi-beam or girder - 1948  
 Structure No. 200186001001052  
 Length: 69'  
 Width: 24.0'  
 Facility Carried: TR 03 FAS 186  
 Bridge Type: STEEL BEAM  
 Features Intersected: DEAD CREEK  
 Surface: Bituminous  
 Maintenance/Ownership: Town

Road Widths	Travellane	Roadway	Lane Count	Base	Subbase

Curves

Grades



Maintenance Garage
(Not State Maintained)

Traffic Counters	
96A306	96A307

Functional Class
7 - Rural - Major collector

Speed Zone

ADT Counts	Year	Count
2012	1100	1600
2011	1100	1600
2010	990	1500
2009	880	1400
2008	760	1200

Crash Locations	Year	Location
2012		
2011		
2010		
2009		
2008		

<b>Historic Projects</b> Retreatment, Resurface, Unknown, Bituminous Mix, Skippy Mix, Bituminous Seal, Bituminous Concrete, Surface Treated Gravel, Plant Mix, Reclaimed Base and Bituminous Concrete, Concrete	<b>Functional Class</b> 1, 2, 3, 4, 5, 6, 7, 8, 9, 10, 11, 12, 13, 14, 15, 16, 17, 18, 19	<b>Curves</b> curve left, curve right	<b>Road Widths</b> (ft)	<b>Grades</b> grade up, grade down	<b>Traffic Counters</b> (counter ID)	<b>Crash Locations</b> Fatal, Injury, Property Damage Only, Unknown Crash Type	<b>Mileage by Functional Class By Sheet</b> 0186 7 - Rural - Major collector 4.680	<b>Mileage by Town By Sheet</b> FERRISBURGH - S01860105 4.68 of 4.68	<b>DISTRICT</b> 5	<b>TOWN</b> FERRISBURGH	<b>Date:</b> 11/14/13	<b>ROUTE</b> Maj-0186 ETE mileage: 0.0 to 4.68
<b>Total Mileage: 4.680 mi</b>								<b>Total Mileage: 4.68 mi</b>		<b>1 of 1</b> TWN mileage: 0.0 to 4.68		