

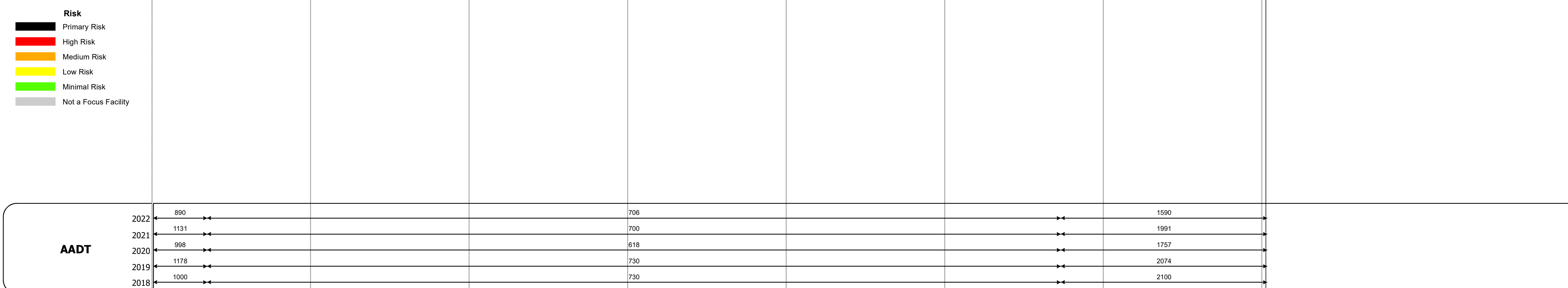
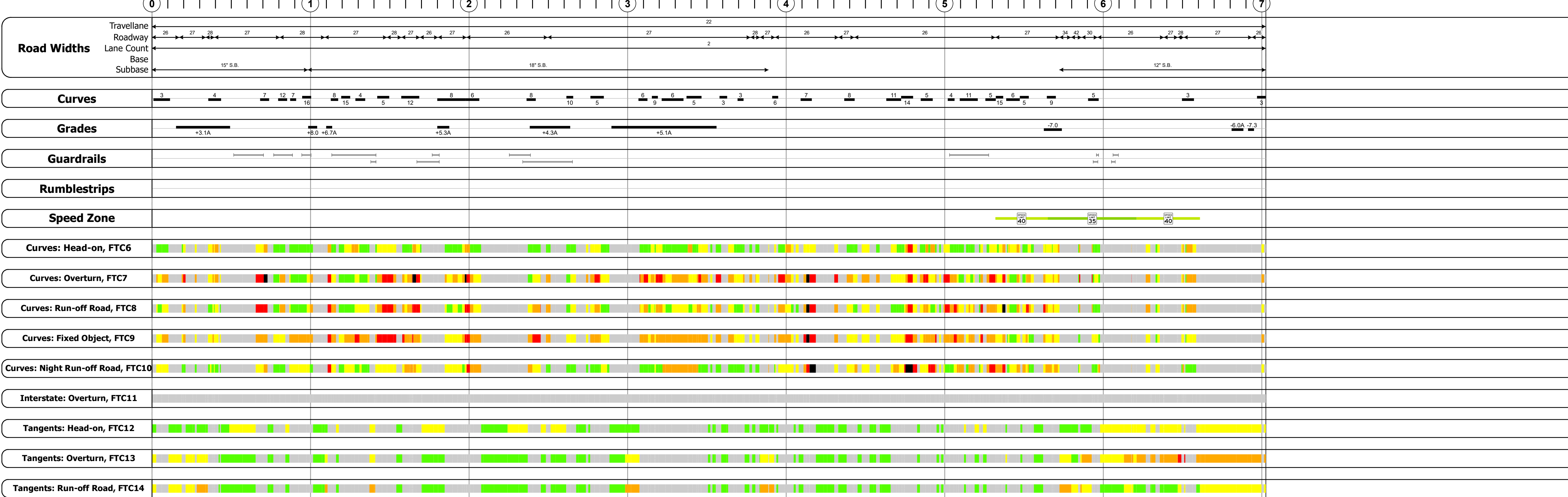
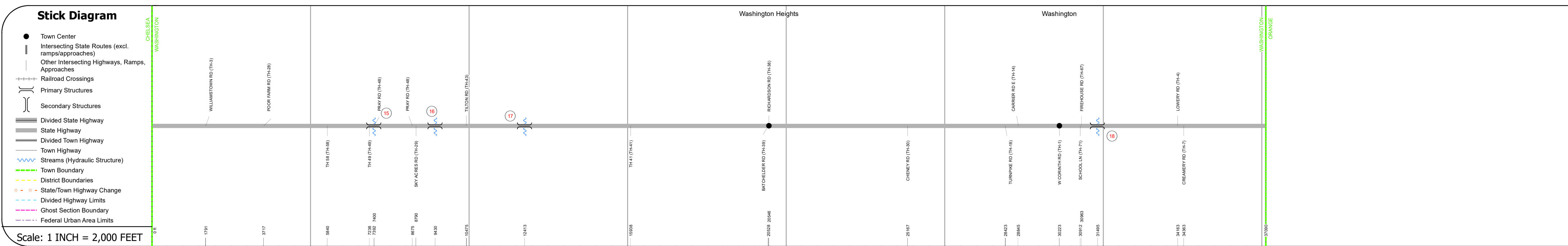
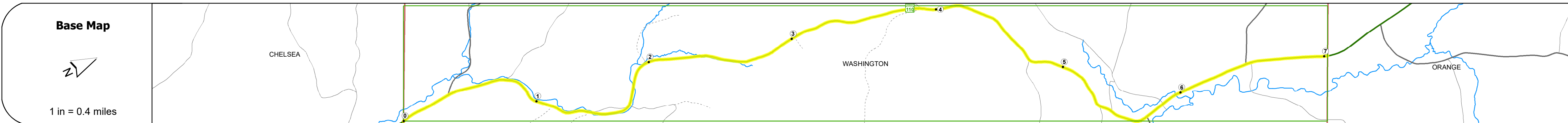


# Route Log and Progress Chart

**DRAFT**

Please Note: Errors and Omissions May Exist.  
Contact the VTrans Mapping Section with questions or concerns.

DISTRICT	TOWN	ROUTE
6	WASHINGTON	VT-110



## STRUCTURE DESCRIPTIONS

**Bridge 15:**  
Slab - 1921  
Structure No. 300169001509151  
Length: 15'  
Width: 28.0'  
Under Clearance: 7.0'  
Weight Limit: 0  
Facility Carried: VT110  
Structure Type: CONCRETE SLAB  
Features Intersected: BROOK  
Surface: Bituminous  
Inspection Date: 12/2018  
Maintenance: State

**Bridge 16:**  
Slab - 1919  
Structure No. 300169001609151  
Length: 18'  
Width: 26.0'  
Under Clearance: 6.0'  
Weight Limit: 0  
Facility Carried: VT110  
Structure Type: CONCRETE SLAB  
Features Intersected: BROOK  
Surface: Bituminous  
Inspection Date: 12/2018  
Maintenance: State

**Bridge 17:**  
Slab - 1941  
Structure No. 300169001709151  
Length: 14'  
Width: 26.0'  
Under Clearance: 5.0'  
Weight Limit: 0  
Facility Carried: VT110  
Structure Type: CONCRETE SLAB  
Features Intersected: BROOK  
Surface: Bituminous  
Inspection Date: 12/2018  
Maintenance: State

**Bridge 18:**  
Tee Beam - 1916  
Structure No. 300169001809151  
Length: 15'  
Width: 23.0'  
Under Clearance: 7.0'  
Weight Limit: 0  
Facility Carried: VT110  
Structure Type: CONCRETE T-BEAM  
Features Intersected: JAIL BRANCH WIN RIVER  
Surface: Bituminous  
Inspection Date: 12/2018  
Maintenance: State

<b>Historic Projects</b> Unknown, Retreatment, Resurface, Bituminous Mix, Skiny Mix, Bituminous Seal Bituminous Concrete, Cold Plane and Expressways, Concrete, Reclaimed Base and Bituminous Concrete, Surface Treated Gravel, Plant Mix	<b>Functional Class</b> 1- Interstate System, 2- Other Freeways and Expressways, 3- Principal Arterial, 4- Minor Arterial, 5- Major Collector, 6- Minor Collector	<b>Crash Locations</b> Fatal, Injury, Property Damage Only, Unknown Crash Type <b>High Crash Locations (HCL's)</b> Sections (& Intersections) HCL No. 201 - 300 (21 - 30), 301 - 400 (31 - 40), 401 - 800 (41 - 113)	<b>Mileage by Functional Class By Sheet</b> 0169 5 - Major Collector 7.025	<b>Mileage by Town By Sheet</b> WASHINGTON - V110-0915 7.025 of 7.025	<b>DISTRICT</b> 6	<b>TOWN</b> WASHINGTON	<b>Date:</b> 04/10/24	<b>ROUTE</b> VT-110 ETE mileage: 17.214 to 24.239
			<b>Page Total Mileage: 7.025 mi</b>					

For More Information Contact - Vermont Agency of Transportation, Policy, Planning and Intermodal Development Division - Mapping Section, 219 North Main Street, Barre, VT 05641 Telephone: 802-828-2600.