

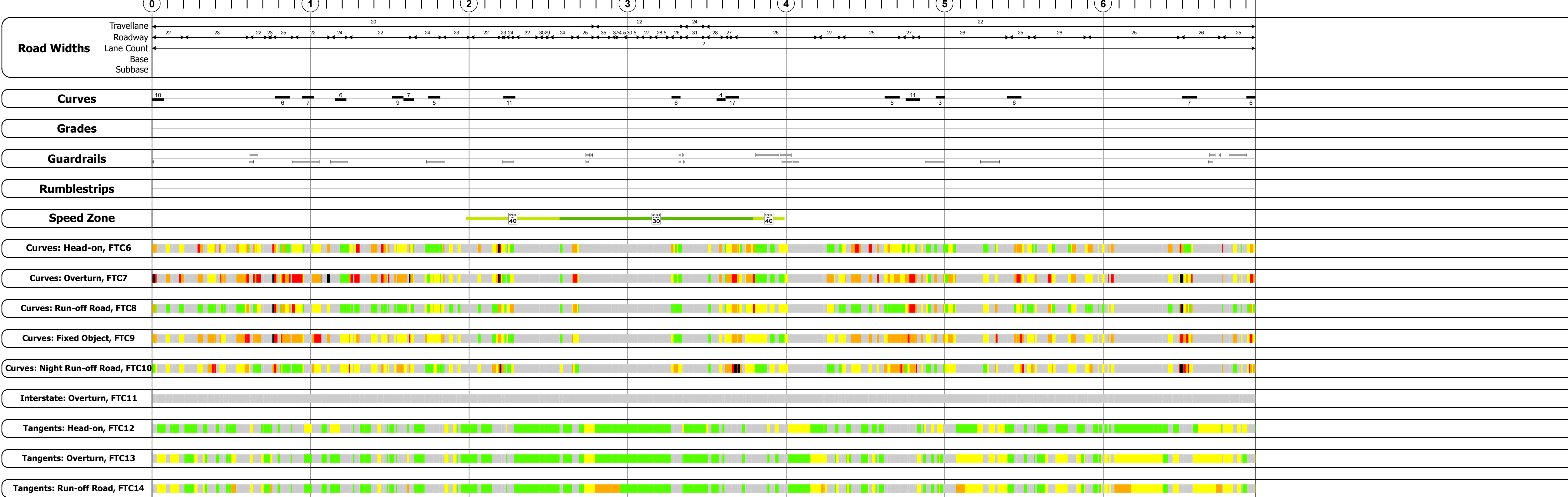
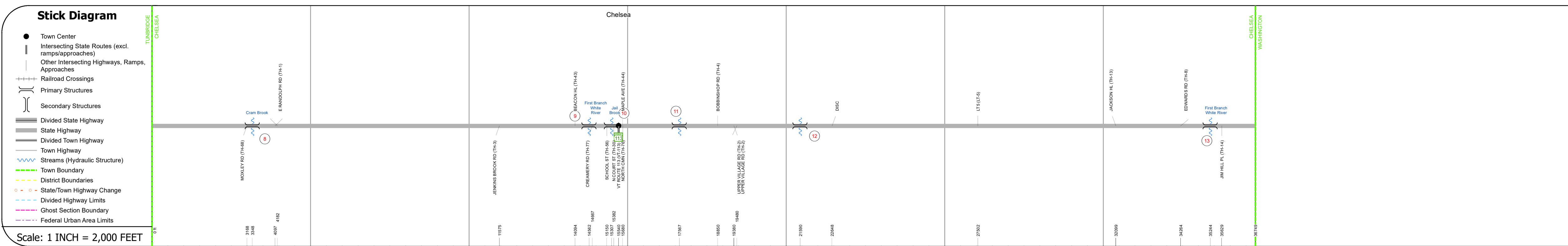
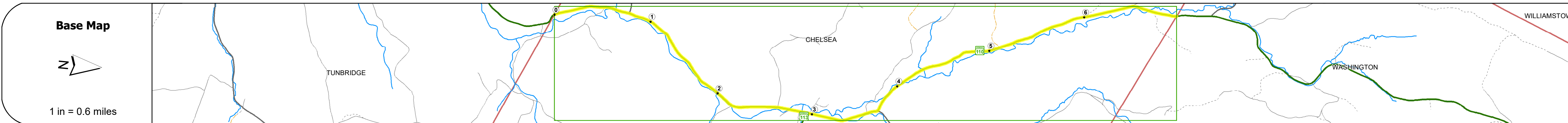
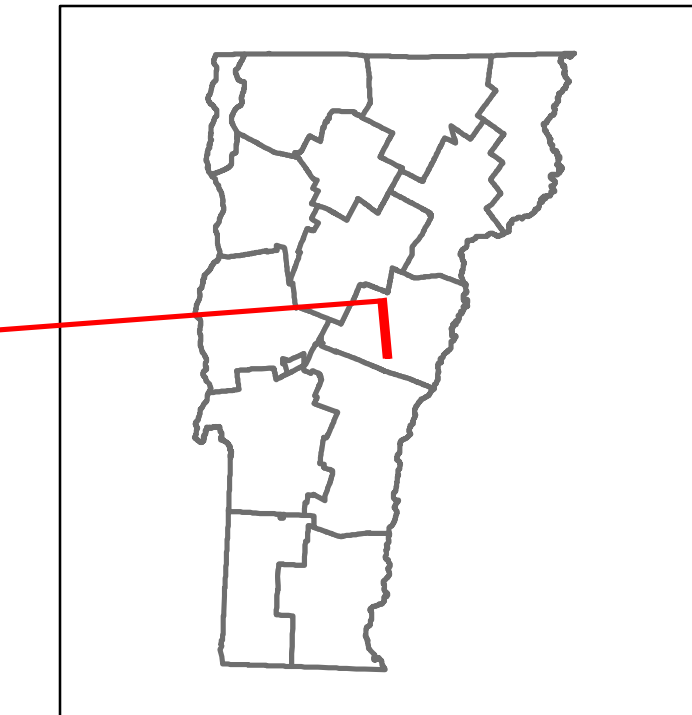


Route Log and Progress Chart

DRAFT

Please Note: Errors and Omissions May Exist.
Contact the VTrans Mapping Section with questions or concerns.

DISTRICT	TOWN	ROUTE
4	CHELSEA	VT-110



Risk	Primary Risk	High Risk	Medium Risk	Low Risk	Minimal Risk	Not a Focus Facility
2022	1504					1579
2021	1434					1602
2020	4164					1414
2019	4916					1670
2018	1300		1700			1600
						1601
						1588
						1402
						1655
						1178
						1200

STRUCTURE DESCRIPTIONS

Bridge 8:
Slab - 1932
Structure No. 200169000809042
Length: 23'
Height: 100.0'
Width: 20.0'
Weight Limit: 0
Facility Carried: VT 00110 ML
Structure Type: CONCRETE SLAB
Features Intersected: CRANES BROOK
Surface: Bituminous
Inspection Date: 7/2021
Maintenance/Ownership: State

Bridge 9:
Box beam or girders - single or spread - 2017
Structure No. 200169000909042
Length: 85'
Height: 100.0'
Width: 34.0'
Weight Limit: 0
Facility Carried: VT 00110 ML
Structure Type: STEEL BOX GIRDER
Features Intersected: 1ST BRANCH WHITE R.
Inspection Date: 7/2021
Maintenance/Ownership: State

Bridge 10:
Slab - 1941
Structure No. 300169001009041
Length: 18'
Width: 35.0'
Under Clearance: 6.0'
Weight Limit: 0
Facility Carried: VT110
Structure Type: CONCRETE SLAB
Features Intersected: JAIL BROOK
Surface: Bituminous
Inspection Date: 11/2018
Maintenance: State

Bridge 11:
Box beam or girders - multiple - 1939
Structure No. 200169001109042
Length: 84'
Height: 100.0'
Width: 34.0'
Weight Limit: 0
Facility Carried: VT 00110 ML
Structure Type: STEEL BOX GIRDER
Features Intersected: BROOK
Inspection Date: 7/2021
Maintenance/Ownership: State

Bridge 12:
Stringer/multi-beam or girder - 1930
Structure No. 200169001209042
Length: 34'
Height: 100.0'
Width: 20.0'
Weight Limit: 0
Facility Carried: VT 00110 ML
Structure Type: ROLLED BEAM
Features Intersected: 1ST BRANCH WHITE R.
Surface: Bituminous
Inspection Date: 7/2021
Maintenance/Ownership: State

Bridge 13:
Tee Beam - 1934
Structure No. 200169001309042
Length: 30'
Height: 100.0'
Width: 22.0'
Weight Limit: 0
Facility Carried: VT 00110 ML
Structure Type: CONCRETE T-BEAM
Features Intersected: 1ST BRANCH WHITE R.
Surface: Bituminous
Inspection Date: 7/2021
Maintenance/Ownership: State

Historic Projects Unknown, Retreatment, Resurface, Bituminous Mix, Skiny Mix, Bituminous Seal Bituminous Concrete, Surface Treated Gravel, Cold Plane and Plant Mix, Reclaimed Base and Bituminous Concrete, Concrete	Functional Class 1 - Interstate System, 2 - Other Freeways and Expressways, 3 - Principal Arterial, 4 - Minor Arterial, 5 - Major Collector, 6 - Minor Collector	Curves Left (degrees), Right (degrees) Grades Left (percent), Right (percent), grade up, grade down Road Widths (ft)	Traffic Counters Continuous (CTC), Weigh-In-Motion (WIM), Short-Term, Scheduled, Short-Term, Unscheduled Crash Locations Fatal, Injury, Property Damage Only, Unknown Crash Type High Crash Locations (HCL's) HCL No. 201 - 300 (21 - 30), 301 - 400 (31 - 40), 401 - 800 (41 - 113)	Mileage by Functional Class By Sheet 0169 5 - Major collector 6.960	Mileage by Town By Sheet CHELSEA - V110-0904 6.96 of 6.96	DISTRICT 4	TOWN CHELSEA	Date: 04/10/24	ROUTE VT-110 ETE mileage: 10.254 to 17.214
Page Total Mileage: 6.960 mi						Page Total Mileage: 6.96 mi			

For More Information Contact - Vermont Agency of Transportation, Policy, Planning and Intermodal Development Division - Mapping Section, 219 North Main Street, Barre, VT 05641 Telephone: 802-828-2600.