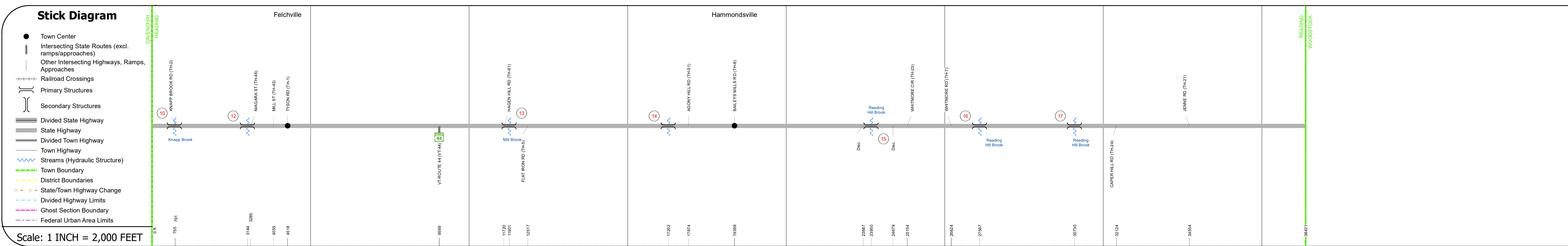
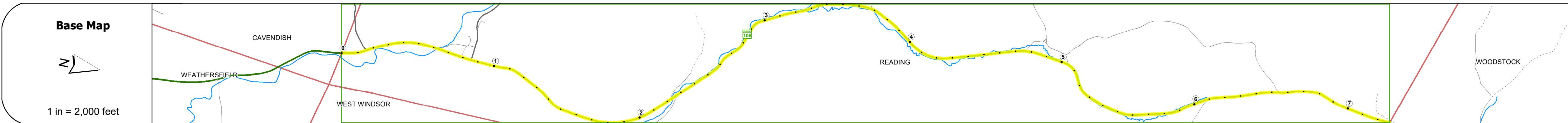
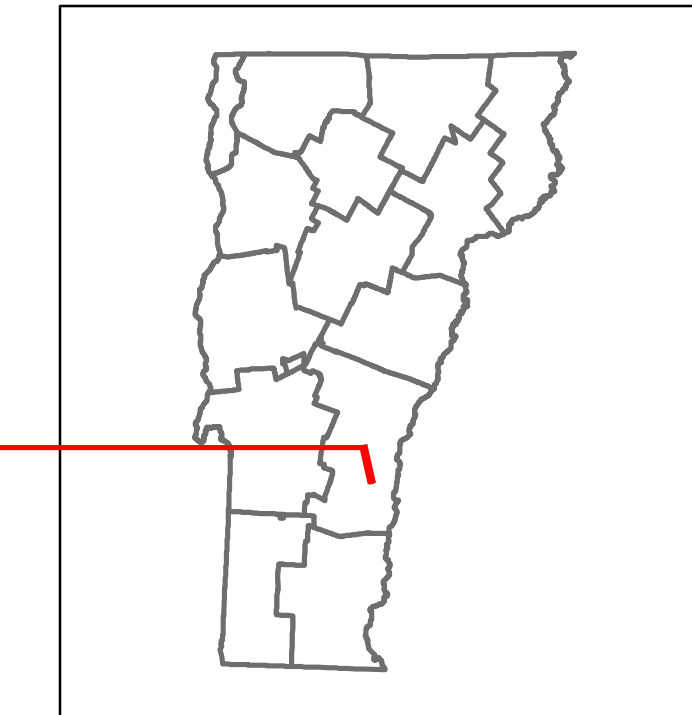
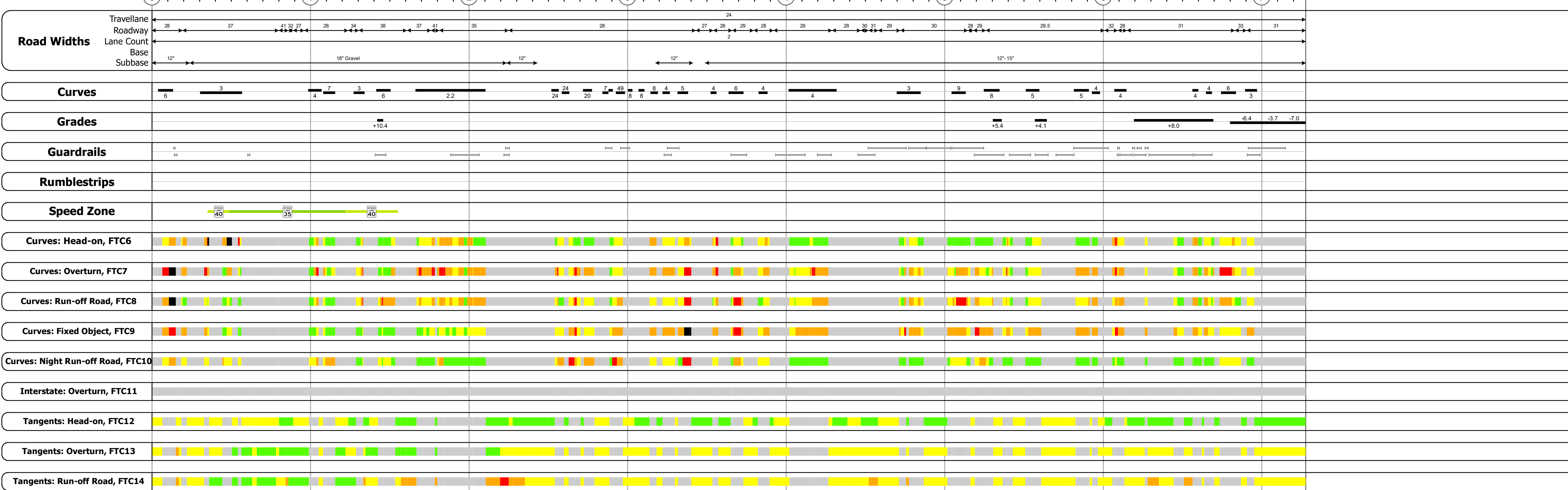


DISTRICT	TOWN	ROUTE
4	READING	VT-106



STRUCTURE DESCRIPTIONS

<p>Bridge 10: Slab - 1950 Structure No. 300151001014141 Length: 18' Width: 31.0' Under Clearance: 7.0' Weight Limit: 0 Facility Carried: VT106 Structure Type: CONCRETE SLAB Features Intersected: KNAPP BROOK Surface: Bituminous Inspection Date: 11/2018 Maintenance: State</p>
<p>Bridge 12: Stringer/multi-beam or girder - 1940 Structure No. 200151001214142 Length: 54' Height: 100.0' Width: 27.0' Weight Limit: 0 Facility Carried: VT 00106 ML Structure Type: ROLLED BEAM Features Intersected: N. BR. BLACK RIVER Surface: Bituminous Inspection Date: 6/2021 Maintenance/Ownership: State</p>
<p>Bridge 13: Stringer/multi-beam or girder - 1949 Structure No. 200151001314142 Length: 89' Height: 100.0' Width: 30.0' Weight Limit: 0 Facility Carried: VT 00106 ML Structure Type: ROLLED BEAM Features Intersected: MILL BROOK Surface: Bituminous Inspection Date: 6/2021 Maintenance/Ownership: State</p>
<p>Bridge 14: Slab - 1949 Structure No. 300106001414141 Length: 20' Width: 31.0' Under Clearance: 6.0' Weight Limit: 0 Facility Carried: VT106 Structure Type: CONCRETE SLAB Features Intersected: READING HILL BROOK Surface: Bituminous Inspection Date: 11/2018 Maintenance: State</p>
<p>Bridge 15: Culvert - 1957 Structure No. 300151001514141 Length: 14' Under Clearance: 8.0' Weight Limit: 0 Facility Carried: VT106 Structure Type: CGMPPA Features Intersected: READING HILL BROOK Inspection Date: 11/2018 Maintenance: State</p>
<p>Bridge 16: Culvert - 1957 Structure No. 300151001614141 Length: 14' Under Clearance: 6.0' Weight Limit: 0 Facility Carried: VT106 Structure Type: CGMPPA Features Intersected: READING HILL BROOK Inspection Date: 11/2018 Maintenance: State</p>
<p>Bridge 17: Culvert - 1957 Structure No. 300151001714141 Length: 8' Under Clearance: 8.0' Weight Limit: 0 Facility Carried: VT106 Structure Type: CGMPPP Features Intersected: READING HILL BROOK Inspection Date: 11/2018 Maintenance: State</p>



Risk

- Primary Risk (Red)
- High Risk (Orange)
- Medium Risk (Yellow)
- Low Risk (Light Green)
- Minimal Risk (Dark Green)
- Not a Focus Facility (Grey)

2022	1389	1082
2021	1378	1073
2020	1216	947
2019	1436	1118
2018	1500	1100

Historic Projects <ul style="list-style-type: none"> Unknown Retreatment Resurface Bituminous Mix Skinny Mix Bituminous Seal 	Functional Class <ul style="list-style-type: none"> 1 - Interstate 2 - Other 3 - Principal Arterial 4 - Minor Arterial 5 - Major Collector 6 - Minor Collector 	Crash Locations <ul style="list-style-type: none"> Fatal Injury Property Damage Only Unknown Crash Type 	Mileage by Functional Class By Sheet 0151 5 - Major Collector 7.277	Mileage by Town By Sheet READING - V106-1414 7.277 of 7.277
--	--	---	---	---

DISTRICT	TOWN	Date: 04/05/24	ROUTE
4	READING	1 of 1 TWN mileage: 0.0 to 7.277	VT-106 ETE mileage: 11.453 to 18.73