

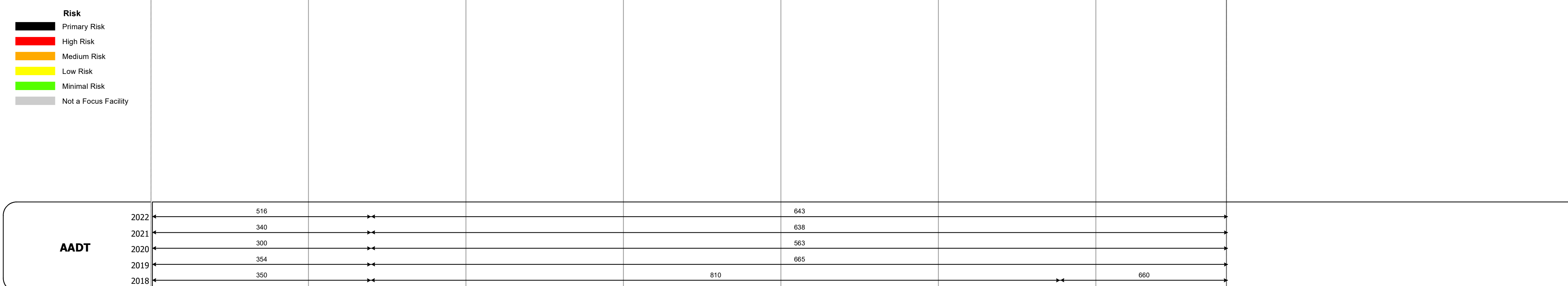
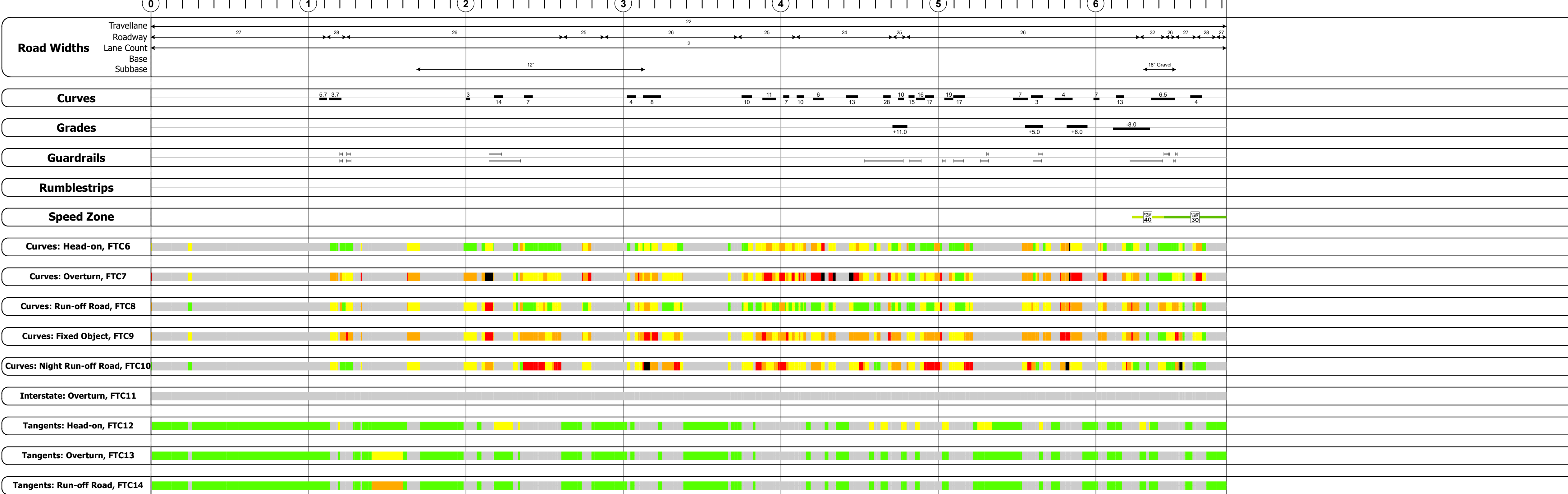
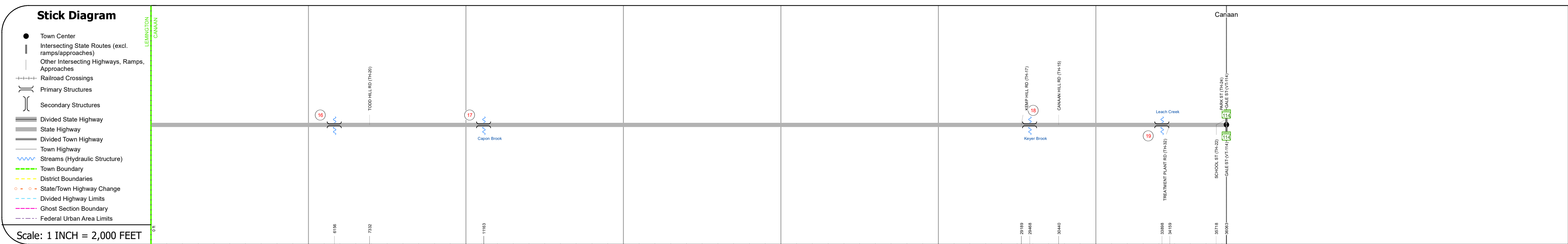
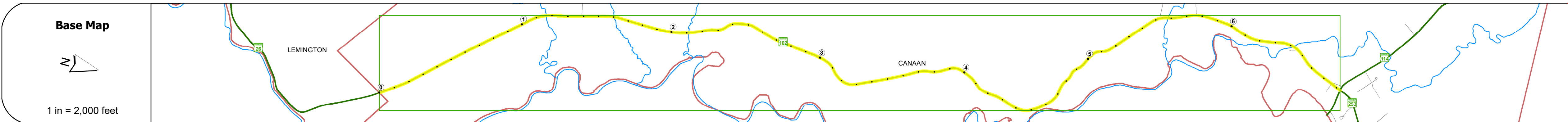
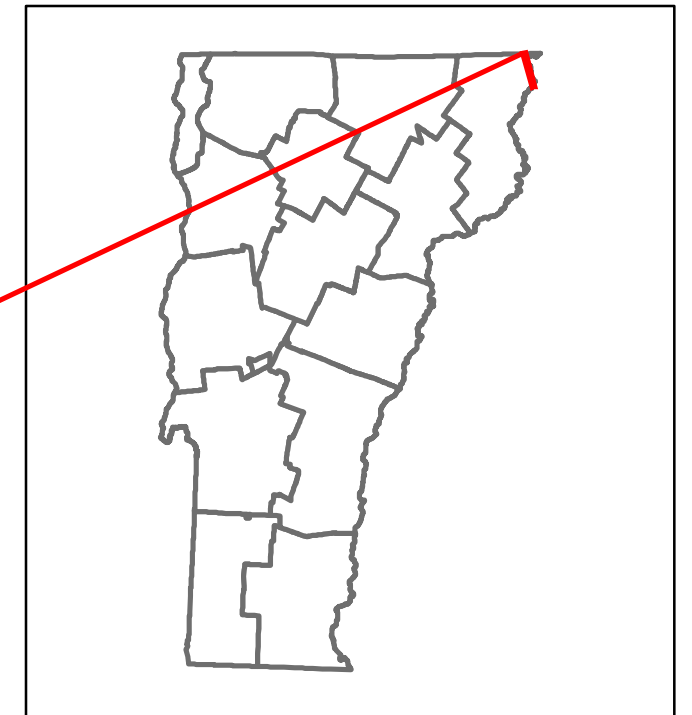


# Route Log and Progress Chart

**DRAFT**

Please Note: Errors and Omissions May Exist.  
Contact the VTrans Mapping Section with questions or concerns.

DISTRICT	TOWN	ROUTE
9	CANAAN	VT-102



AADT	2022	516	643
	2021	340	638
	2020	300	563
	2019	354	665
	2018	350	810

## STRUCTURE DESCRIPTIONS

**Bridge 16:**  
Stringer/multi-beam or girder - 2009  
Structure No. 200271001605062  
Length: 84'  
Height: 100.0'  
Width: 29.0'  
Weight Limit: 0  
Facility Carried: VT 00102 ML  
Structure Type: ROLLED BEAM  
Features Intersected: WILLARD STREAM  
Inspection Date: 7/2021  
Maintenance/Ownership: State

**Bridge 17:**  
Culvert - 1967  
Structure No. 300271001705061  
Length: 15'  
Under Clearance: 9.0'  
Weight Limit: 0  
Facility Carried: VT 102  
Structure Type: CGMPPA  
Features Intersected: CAPON BROOK  
Inspection Date: 10/2022  
Maintenance: State

**Bridge 18:**  
Stringer/multi-beam or girder - 1955  
Structure No. 200271001805062  
Length: 44'  
Height: 100.0'  
Width: 24.0'  
Weight Limit: 0  
Facility Carried: VT 00102 ML  
Structure Type: ROLLED BEAM  
Features Intersected: KEYSER BROOK  
Surface: Bituminous  
Inspection Date: 7/2021  
Maintenance/Ownership: State

**Bridge 19:**  
Stringer/multi-beam or girder - 1971  
Structure No. 200271001905062  
Length: 148'  
Height: 100.0'  
Width: 33.0'  
Weight Limit: 0  
Facility Carried: VT 00102 ML  
Structure Type: 2 SP CONT CUR GIRDER  
Features Intersected: LEACH CREEK  
Surface: Bituminous  
Inspection Date: 7/2021  
Maintenance/Ownership: State