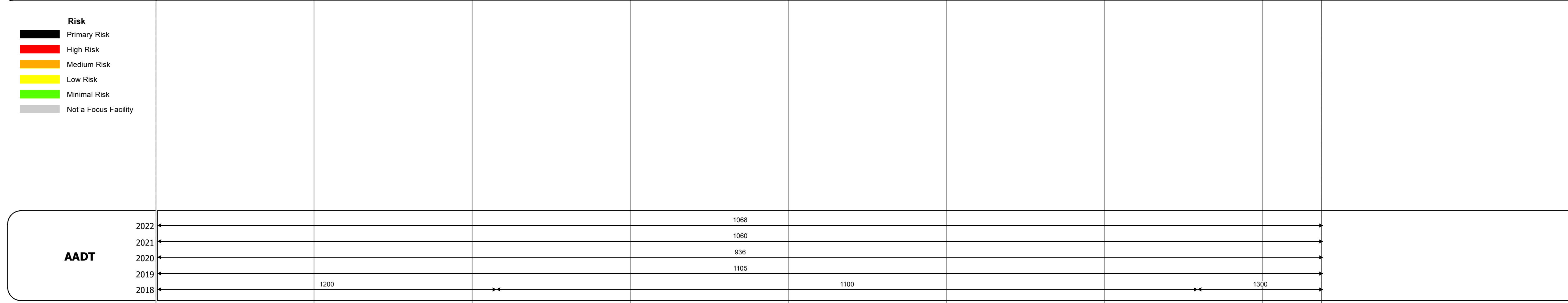
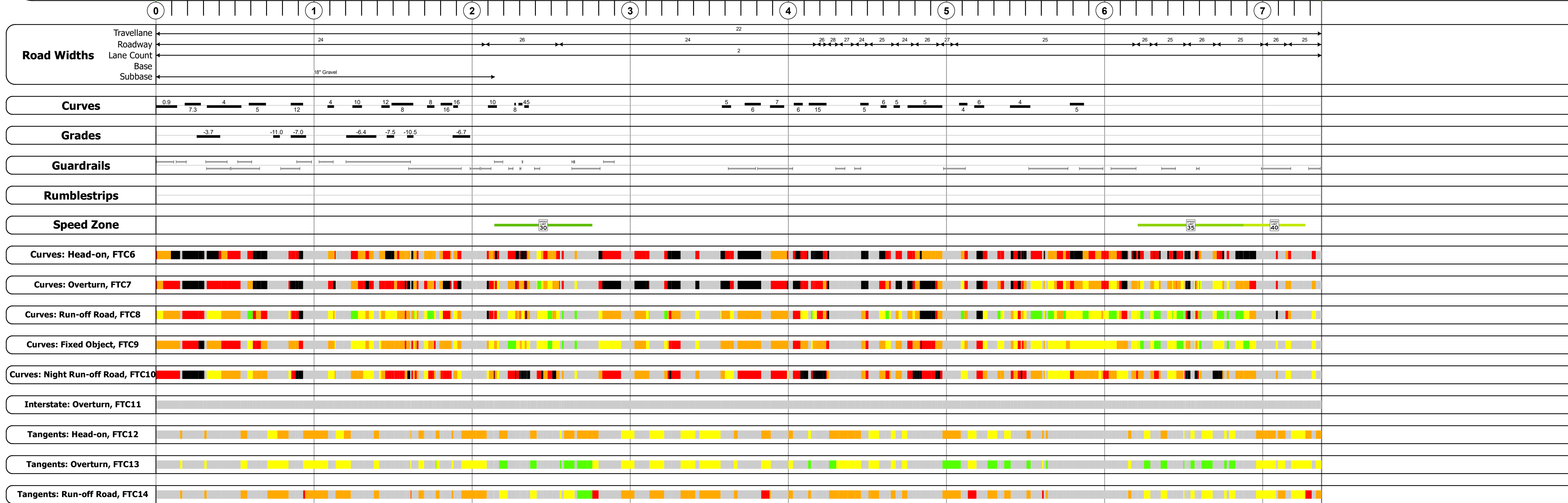
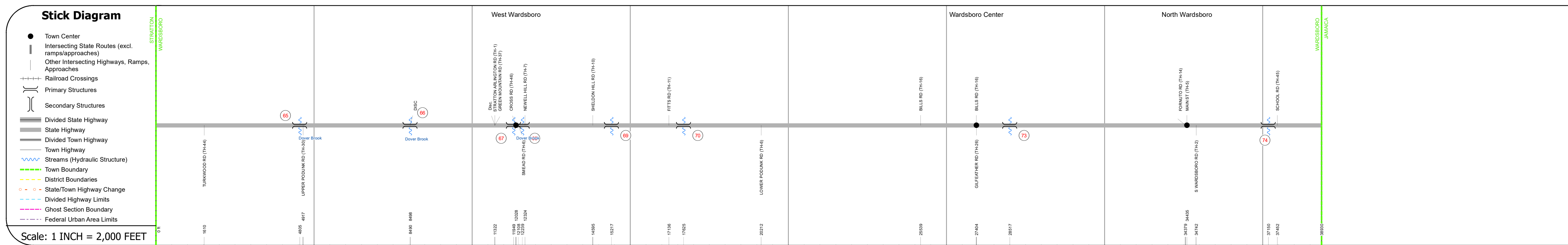
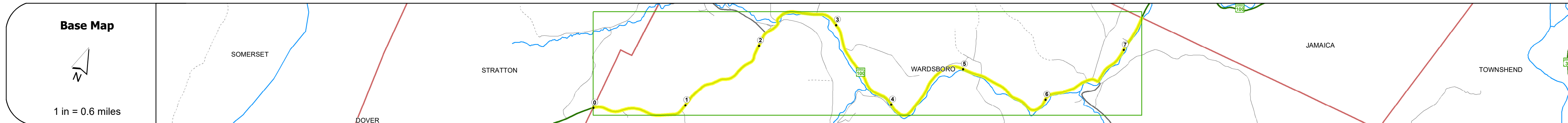
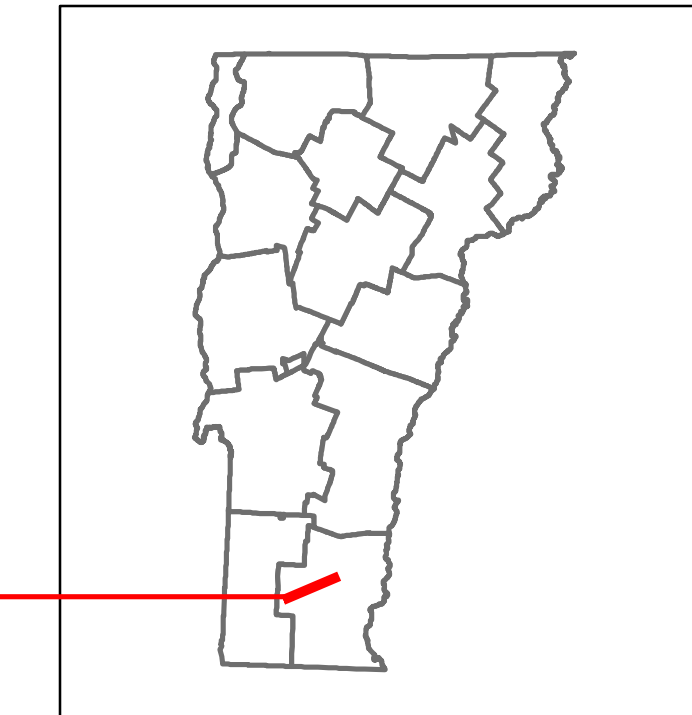


DISTRICT	TOWN	ROUTE
2	WARDSBORO	VT-100



### STRUCTURE DESCRIPTIONS

- Bridge 65:** Culvert - 1919, Structure No. 300013006513191, Length: 16', Under Clearance: 7.0', Weight Limit: 0, Facility Carried: VT100, Structure Type: RC BOX, Features Intersected: DOVER BROOK, Inspection Date: 11/2022, Maintenance: State
- Bridge 66:** Culvert - 1919, Structure No. 300013006613191, Length: 15', Under Clearance: 8.0', Weight Limit: 0, Facility Carried: VT100, Structure Type: RC BOX, Features Intersected: DOVER BROOK, Inspection Date: 11/2022, Maintenance: State
- Bridge 67:** Culvert - 1919, Structure No. 300013006713191, Length: 15', Under Clearance: 7.0', Weight Limit: 0, Facility Carried: VT100, Structure Type: RC BOX, Features Intersected: DOVER BROOK, Inspection Date: 11/2022, Maintenance: State
- Bridge 68:** Stringer/multi-beam or girder - 2016, Structure No. 200013006813192, Length: 70', Height: 100.0', Width: 28.0', Weight Limit: 0, Facility Carried: VT 00100 ML, Structure Type: WELDED PLATE GIRDER, Features Intersected: WARDSBORO BROOK, Inspection Date: 6/2021, Maintenance/Ownership: State
- Bridge 69:** Culvert - 1958, Structure No. 300013006913191, Length: 6', Under Clearance: 6.0', Weight Limit: 0, Facility Carried: VT100, Structure Type: ACCMPP, Features Intersected: BROOK, Inspection Date: 11/2022, Maintenance: State
- Bridge 70:** Culvert - 2014, Structure No. 300013007013191, Length: 14', Under Clearance: 6.0', Weight Limit: 0, Facility Carried: VT100, Structure Type: SEGMENTAL RC BOX, Features Intersected: BROOK, Inspection Date: 12/2022, Maintenance: State
- Bridge 73:** Culvert - 2014, Structure No. 300013007313191, Length: 14', Under Clearance: 6.0', Weight Limit: 0, Facility Carried: VT100, Structure Type: SEGMENTAL RC BOX, Features Intersected: BROOK, Inspection Date: 12/2022, Maintenance: State
- Bridge 74:** Culvert - 1919, Structure No. 300013007413191, Length: 12', Under Clearance: 6.0', Weight Limit: 0, Facility Carried: VT100, Structure Type: RC BOX, Features Intersected: BROOK, Inspection Date: 12/2022, Maintenance: State

<b>Historic Projects</b> <ul style="list-style-type: none"> <li>Unknown</li> <li>Retreatment</li> <li>Resurface</li> <li>Bituminous Mix</li> <li>Skinny Mix</li> <li>Bituminous Seal</li> </ul>	<b>Functional Class</b> <ul style="list-style-type: none"> <li>1 - Interstate System</li> <li>2 - Other Freeways and Expressways</li> <li>3 - Principal Arterial</li> <li>4 - Minor Arterial</li> <li>5 - Major Collector</li> <li>6 - Minor Collector</li> </ul>	<b>Crash Locations</b> <ul style="list-style-type: none"> <li>Fatal</li> <li>Injury</li> <li>Property Damage Only</li> <li>Unknown Crash Type</li> </ul>	<b>Mileage by Functional Class By Sheet</b> 013-1 4 - Minor Arterial 7.373	<b>Mileage by Town By Sheet</b> WARDSBORO - V100-1319 7.373 of 7.373	<b>DISTRICT</b> 2	<b>TOWN</b> WARDSBORO	<b>Date:</b> 02/15/24	<b>ROUTE</b> VT-100 ETE mileage: 38.706 to 46.079
<b>Speed Zones</b> 25 30 35 40 45 50 55 60 65		<b>Road Widths</b> Left Right	<b>Traffic Counters</b> Continuous (CTC), Weigh-In-Motion (WIM), Short-Term, Scheduled, Short-Term, Unscheduled	<b>High Crash Locations (HCL's)</b> HCL No. 201 - 300 (21 - 30), 301 - 400 (31 - 40), 401 - 800 (41 - 113)	<b>Page Total Mileage:</b> 7.373 mi	<b>Page Total Mileage:</b> 7.373 mi	<b>1 of 1</b> TWN mileage: 0.0 to 7.373	